



Total Solution Provider in Saw Device

SL7005V

70.0 MHz IF SAW Filter

4.8 MHz Bandwidth

Revision 1 : 29. Oct. 2007



-
- Electrical Characteristics
 - Package Dimensions
 - Testing Environment
 - Frequency Characteristics
-

SAWNICS Inc.

460 Cheonheung-ri, Seonggeo-eup, Cheonan-si, Chungcheongnam-do, 330-836 / Korea.
Tel: +82 41 550 9372 / Fax: +82 41 550 9399 / www.sawnics.com

□ Electrical Characteristics

Maximum Ratings

Parameters Description	Unit	Minimum	Typical	Maximum
Operating Temperature Range	°C	-30	-	80
Storage Temperature Range	°C	-40	-	85
Maximum DC Voltage	V	-	-	10
Maximum Input Power	dBm	-	-	10
Source Impedance (single ended) ⁽¹⁾	Ω	-	50	-
Load Impedance (single ended) ⁽¹⁾	Ω	-	50	-
Package type & size	V			
Length x Width	mm ²	-	13.3 x 6.5	-
Height	mm	-	-	1.8

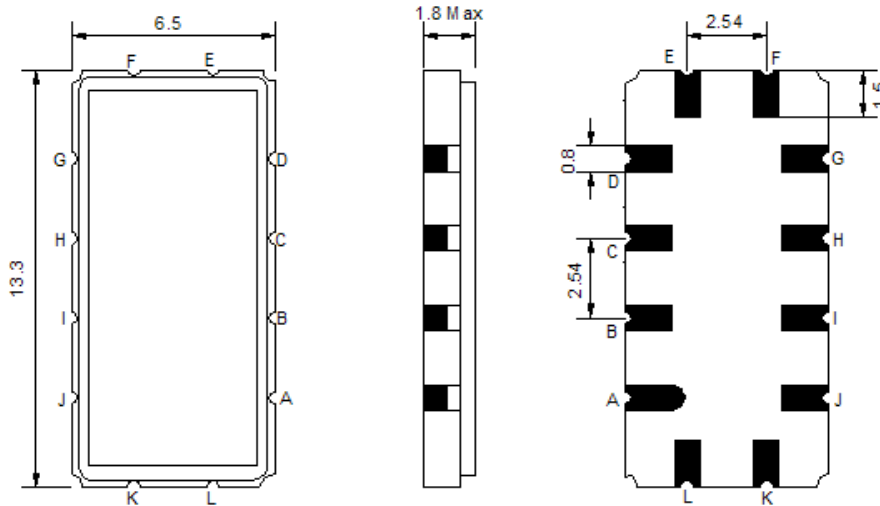
Electrical Specification

Parameters Description	Unit	Minimum	Typical	Maximum
Center Frequency (Fo)	MHz	69.8	70.00	70.2
Insertion Loss at Fo	dB	-	8.5	9.2
Temperature Coefficient	ppm/°C	-	-84	-
Group Delay Variation	nsec	-	95	150
Absolute Delay at Fo	µsec	-	0.84	-
PassBand Ripple Variation	dB	-	0.6	1.0
Bandwidth at -1.0 dB	MHz	4.4	4.8	-
Bandwidth at -3.0 dB	MHz	5.2	5.6	-
Bandwidth at -35.0 dB	MHz	-	8.5	9.0
Ultimate Rejection	dB	40	42	-

Notes : (1) With Matching Network (Ref. Testing Environment Circuit as shown below).

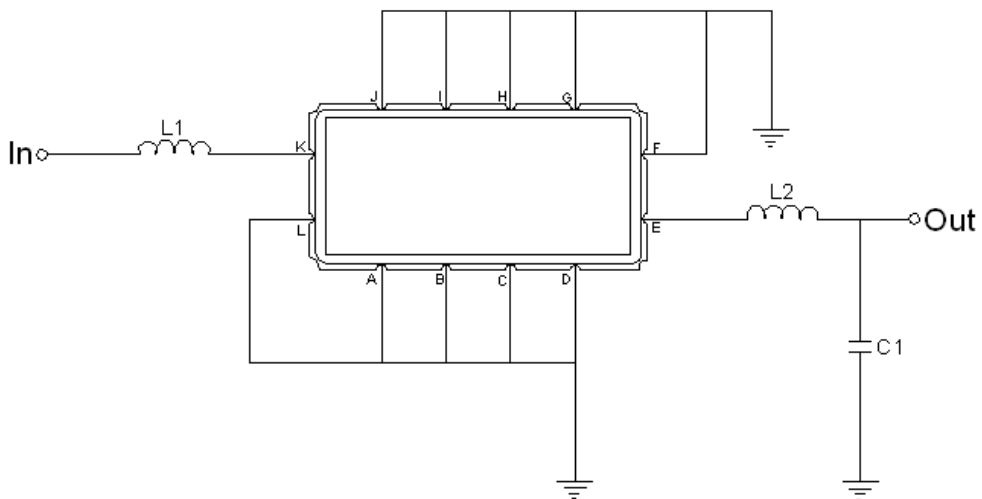
Those impedances could be modified with different impedance values and/or structures, if necessary.

□ Package Dimensions



Pin Description	
A, B, C, D, F, G, H, I, J, L	Ground
K	Input
E	Output

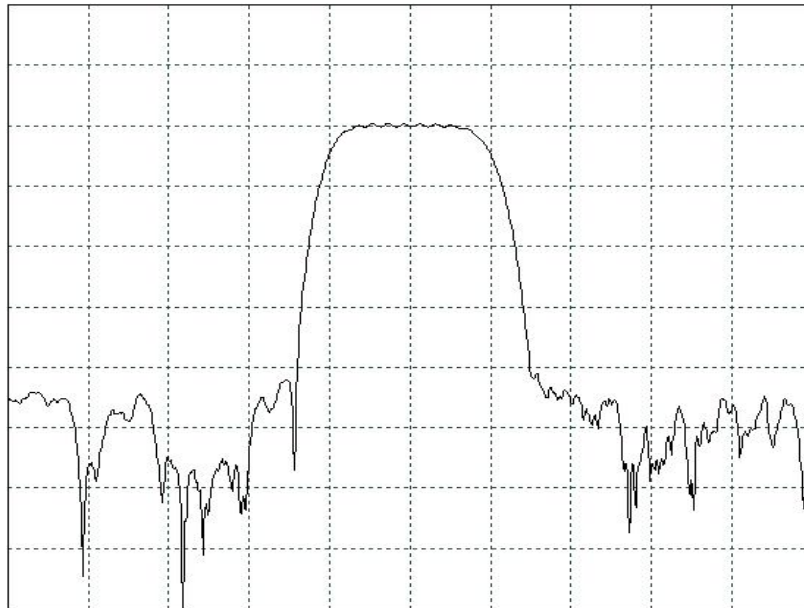
□ Testing Environment



Test Fixture & Values	
Input	L1 = 220 nH
Output	L2 = 120 nH , C1 = 10 pF
Source/Load Impedance	50 Ω

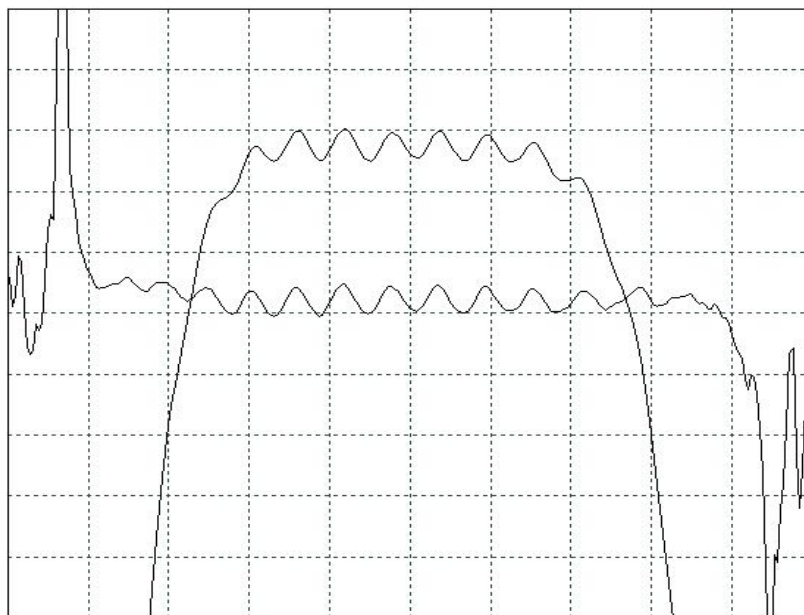
Frequency Characteristics

Frequency Response



Horizontal : 3.0 MHz/Div

Vertical : 10 dB/Div



Horizontal : 1.0 MHz/Div

Vertical : 1 dB/Div

Vertical : 200 ns/Div