

DESCRIPTION

This series of surface mount PIN and Limiter diodes utilize new and unique monolithic MMSM technology. The technology is a package/device integration accomplished at the wafer fabrication level. Since the cathode and anode interconnections utilize precision photolithographic techniques rather than wire bonds, parasitic package inductance is tightly controlled. The package parasitics provide smooth non-resonant functionality through X Band. This series of devices meets RoHS requirements per EU Directive 2002/95/EC.

APPLICATIONS

The MPP4000 series of PIN diodes can be used in RF circuits as an on/off element, as a switch, or as a current controlled resistor in attenuators extending over the frequency range from UHF through X band. Switch applications include high speed switches (ECM systems), TR switches channel or antenna selection switches (Telcom and WLAN applications), duplexers (radar) and digital phase shifters (phased arrays). These diodes are also used as passive and active limiters for low to moderate RF power levels. Attenuator type applications include amplitude modulators, AGC attenuators and power levelers.

The MPL4700 / MPL4701 series of Limiter diodes are design for low to medium power receiver protection. The typical leakage output power for the MPL4701 is +20 dbm versus +24 dbm for the MPL4700.

**ABSOLUTE MAXIMUM RATINGS AT 25° C
(UNLESS OTHERWISE SPECIFIED)**

Rating	Symbol	Value	Unit
Maximum Leakage Current @80% of minimum Rated V_B	I_R	0.5	μA
Operating Temperature	T_{OP}	-55 to +150	°C
Storage Temperature	T_{STG}	-65 to +150	°C

IMPORTANT: For the most current data, visit: www.MICROSEMI.com

Specifications are subject to change. Consult factory for latest information.



These devices are ESD sensitive and must be handled use using ESD precautions.

KEY FEATURES

- Up to 10W incident RF power handling
- Low parasitics
 $L_P = 0.02nH$ Typical
 $C_P = 0.04pF$ Typical
- Broadband Performance through X-Band
- Available on Tape & Reel or on Film Frame for pick & place
- Small, SOD 323 Footprint
- RoHS Compliant ¹

1- These devices are supplied with gold terminations.

APPLICATIONS/BENEFITS

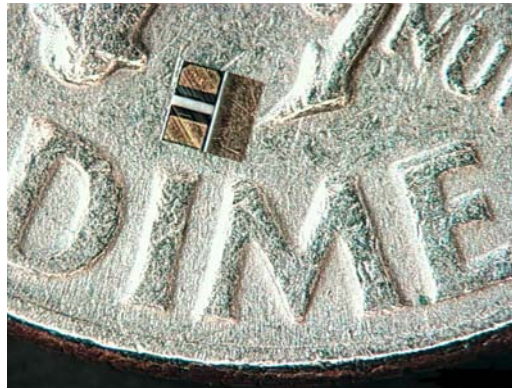
- Receiver protection circuits
- Broadband Switching
- Economy Switching
- RF Attenuators

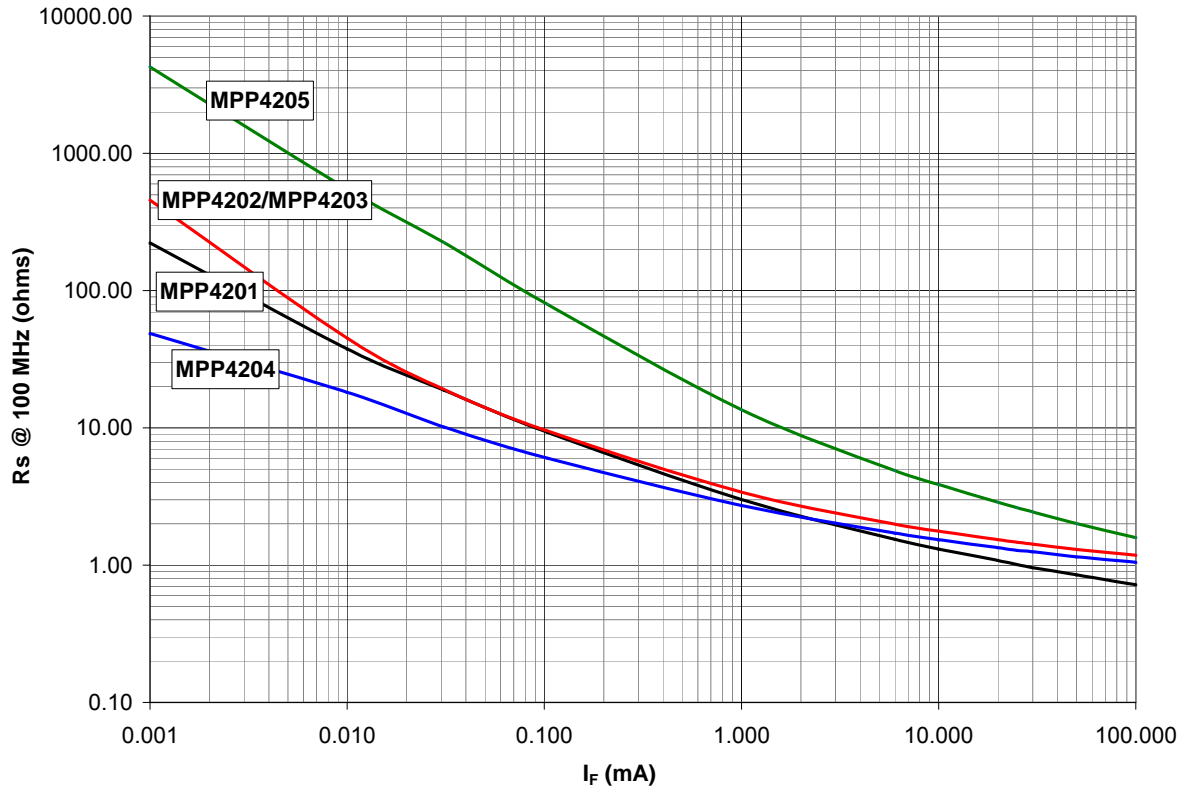
DEVICE ELECTRICAL PARAMETERS @ 25°C (unless otherwise specified)

Model Number	V_B (V) $I_R=10\mu A$ (Min)	C_T (pF) ¹ @-10V (Max)	$R_S(\Omega)^2$ @ 0.01 mA (Typ)	$R_S(\Omega)^2$ @1 mA	$R_S(\Omega)^2$ @10 mA (Max)	$R_S(\Omega)^2$ @20 mA (Max)	T_L (Typ)	Application
MPP4201	70	0.20				2.5	150	Switching / Attenuation
MPP4202	50	0.15				2.8	50	Switching
MPP4203	50	0.10				3.0	50	Economy Switching
MPP4204	25	0.15			2.0		20	Switching
MPP4205	70	0.15	250	7-16	5.0		150	Attenuation
MPL4700	25	0.15			2.0 ^a		20	Receiver Protection
MPL4701	15	0.20			2.5 ^a		10	Receiver Protection

Notes

- 1- Capacitance is measured at $f = 1$ MHz.
- 2- Series Resistance (R_S) is measured at $f = 100$ MHz. Devices are mounted in a package suitable for testing.
 - a. R_S is measured at 1GHz for the MPL4700 and MPL4701 devices.



TYPICAL RS VS If @ 25°C

PACKAGE STYLE 206
