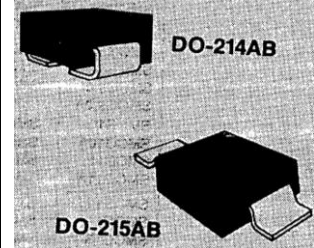


### DESCRIPTION

The MSMCJ5.0A-170A or MSMCG5.0CA-170CA series of 1500 W Transient Voltage Suppressors (TVSs) protects a variety of voltage-sensitive components. It is available in J-bend design (SMCJ) with the DO-214AB package for greater PC board mounting density or in a Gull-wing design (SMCG) in the DO-215AB for visible solder connections. Selections include unidirectional and bidirectional as well as RoHS Compliant with an e3 suffix. They can protect from secondary lightning effects per IEC61000-4-5 and class levels defined herein, or for inductive switching environments and induced RF protection. Since their response time is virtually instantaneous, they can also be used in protection from ESD and EFT per IEC61000-4-2 and IEC61000-4-4.

**IMPORTANT:** For the most current data, consult MICROSEMI's website: <http://www.microsemi.com>

### APPEARANCE



**NOTE:** All SMC series are equivalent to prior SMM package identifications.

### FEATURES

- High-reliability controlled devices
- 100% surge tested
- Economical surface mount design in both J-bend or Gull-wing terminations
- Available in both Unidirectional and Bidirectional construction with a CA suffix
- Optional upscreening available by replacing M prefix with MA, MX or MXL prefixes. These prefixes specify various screening and conformance inspection options based on MIL-PRF-19500. Refer to [Micronote 129](#) for more details on the screening options.
- Axial-lead equivalent packages for thru-hole mounting available as 1.5KE6.8A to 1.5KE200CA or 1N6267 thru 1N6303A and 1N5908 (consult factory for other surface mount options)
- Moisture classification is Level 1 with no dry pack required per IPC/JEDEC J-STD-020B
- RoHS compliant devices available by adding "e3" suffix
- Selections for 5.0 to 170 volts standoff voltages ( $V_{WM}$ )
- Protection from switching transients and induced RF

### MAXIMUM RATINGS

- Peak Pulse Power dissipation at 25°C: 1500 watts at 10/1000  $\mu$ s (also see Fig 1,2, and 3)
- Impulse repetition rate (duty factor): 0.01%
- $t_{clamping}$  (0 volts to  $V_{(BR)}$  min.): < 100 ps theoretical for unidirectional and < 5 ns for bidirectional
- Operating and Storage temperature: -65°C to +150°C
- Thermal resistance: 20°C/W junction to lead, or 80°C/W junction to ambient when mounted on FR4 PC board (1oz Cu) with recommended footprint (see last page)
- Steady-State Power dissipation: 6 watts at  $T_L = 30^\circ\text{C}$ , or 1.56 watts at  $T_A = 25^\circ\text{C}$  when mounted on FR4 PC board with recommended footprint
- Forward Surge: 200 Amps peak impulse of 8.3 ms half-sine wave at 25°C (unidirectional only)
- Solder temperatures: 260°C for 10 s (maximum)

### APPLICATIONS / BENEFITS

- Protection from ESD, and EFT per IEC 61000-4-2 and IEC 61000-4-4
- Secondary lightning protection per IEC61000-4-5 with 42 Ohms source impedance:
  - Class 1: SMC 5.0 to SMC 170A or CA
  - Class 2: SMC 5.0 to SMC 150A or CA
  - Class 3: SMC 5.0 to SMC 75A or CA
  - Class 4: SMC 5.0 to SMC 36A or CA
- Secondary lightning protection per IEC61000-4-5 with 12 Ohms source impedance:
  - Class 1 : SMC 5.0 to SMC 90A or CA
  - Class 2: SMC 5.0 to SMC 45A or CA
  - Class 3: SMC 5.0 to SMC 24A or CA
  - Class 4: SMC 5.0 to SMC 11A or CA
- Secondary lightning protection per IEC61000-4-5 with 2 Ohms source impedance:
  - Class 2: SMC 5.0 to SMC 22A or CA
  - Class 3: SMC 5.0 to SMC 10A or CA

### MECHANICAL AND PACKAGING

- CASE: Void-free transfer molded thermosetting epoxy body meeting UL94V-0
- TERMINALS: Gull-wing or C-bend (modified J-bend) leads, tin-lead or RoHS compliant annealed matte-tin plating solderable to MIL-STD-750, method 2026
- POLARITY: Cathode indicated by band. No marking on bi-directional devices
- MARKING: Part number without "SM" prefix (e.g. MC5.0A, MC5.0CA, MXC5.0A, MC5.0CAe3, MC36A, MAC36CA etc.)
- TAPE & REEL option: Standard per EIA-481-2 with 16 mm tape, 750 per 7 inch reel or 2500 per 13 inch reel (add "TR" suffix to part number)
- WEIGHT: 0.25 grams

**ELECTRICAL CHARACTERISTICS @ 25°C**

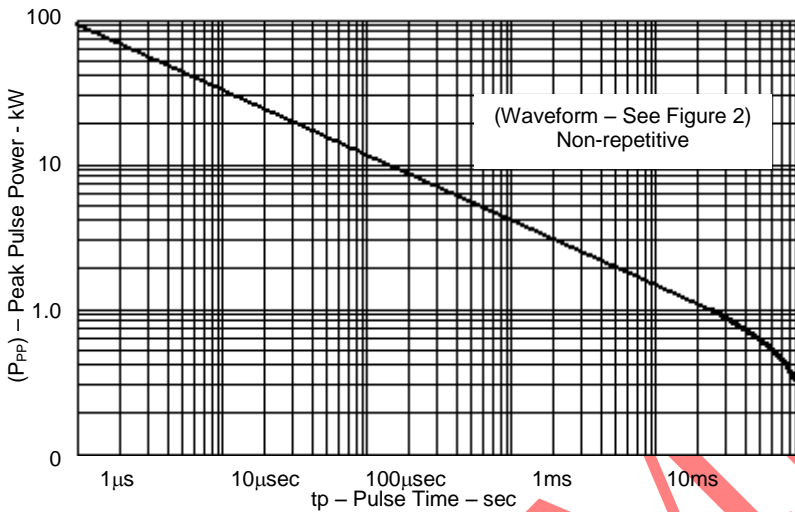
MICROSEMI PART NUMBER		REVERSE STAND-OFF VOLTAGE  $V_{WM}$ Volts	BREAKDOWN VOLTAGE $V_{(BR)}$ @ $I_{(BR)}$ Volts		MAXIMUM CLAMPING VOLTAGE @ $I_{PP}$ Volts	PEAK PULSE CURRENT (See Fig. 2) $I_{PP}$ Amps	MAXIMUM STANDBY CURRENT @ $V_{WM}$ $I_D$ $\mu A$
GULL-WING LEAD	MODIFIED "J" BEND LEAD		MIN.	MAX.			
SMCG5.0A	SMCJ5.0A	5.0	6.40 – 7.00	10	9.2	163.0	1000
SMCG6.0A	SMCJ6.0A	6.0	6.67 – 7.37	10	10.3	145.6	1000
SMCG6.5A	SMCJ6.5A	6.5	7.22 – 7.98	10	11.2	133.9	500
SMCG7.0A	SMCJ7.0A	7.0	7.78 – 8.60	10	12.0	125.0	200
SMCG7.5A	SMCJ7.5A	7.5	8.33 – 9.21	1	12.9	116.3	100
SMCG8.0A	SMCJ8.0A	8.0	8.89 – 9.83	1	13.6	110.3	50
SMCG8.5A	SMCJ8.5A	8.5	9.44 – 10.4	1	14.4	104.2	20
SMCG9.0A	SMCJ9.0A	9.0	10.0 – 11.1	1	15.4	97.4	10
SMCG10A	SMCJ10A	10	11.1 – 12.3	1	17.0	88.2	5
SMCG11A	SMCJ11A	11	12.2 – 13.5	1	18.2	82.4	5
SMCG12A	SMCJ12A	12	13.3 – 14.7	1	19.9	75.3	5
SMCG13A	SMCJ13A	13	14.4 – 15.9	1	21.5	69.7	1
SMCG14A	SMCJ14A	14	15.6 – 17.2	1	23.2	64.7	1
SMCG15A	SMCJ15A	15	16.7 – 18.5	1	24.4	61.5	1
SMCG16A	SMCJ16A	16	17.8 – 19.7	1	26.0	57.7	1
SMCG17A	SMCJ17A	17	18.9 – 20.9	1	27.6	53.3	1
SMCG18A	SMCJ18A	18	20.0 – 22.1	1	29.2	51.4	1
SMCG20A	SMCJ20A	20	22.2 – 24.5	1	32.4	46.3	1
SMCG22A	SMCJ22A	22	24.4 – 26.9	1	35.5	42.2	1
SMCG24A	SMCJ24A	24	26.7 – 29.5	1	38.9	38.6	1
SMCG26A	SMCJ26A	26	28.9 – 31.9	1	42.1	35.6	1
SMCG28A	SMCJ28A	28	31.1 – 34.4	1	45.4	33.0	1
SMCG30A	SMCJ30A	30	33.3 – 36.8	1	48.4	31.0	1
SMCG33A	SMCJ33A	33	36.7 – 40.6	1	53.3	28.1	1
SMCG36A	SMCJ36A	36	40.0 – 44.2	1	58.1	25.8	1
SMCG40A	SMCJ40A	40	44.4 – 49.1	1	64.5	23.2	1
SMCG43A	SMCJ43A	43	47.8 – 52.8	1	69.4	21.6	1
SMCG45A	SMCJ45A	45	50.0 – 55.3	1	72.7	20.6	1
SMCG48A	SMCJ48A	48	53.3 – 58.9	1	77.4	19.4	1
SMCG51A	SMCJ51A	51	56.7 – 62.7	1	82.4	18.2	1
SMCG54A	SMCJ54A	54	60.0 – 66.3	1	87.1	17.2	1
SMCG58A	SMCJ58A	58	64.4 – 71.2	1	93.6	16.0	1
SMCG60A	SMCJ60A	60	66.7 – 73.7	1	96.8	15.5	1
SMCG64A	SMCJ64A	64	71.1 – 78.6	1	103.0	14.6	1
SMCG70A	SMCJ70A	70	77.8 – 86.0	1	113	13.3	1
SMCG75A	SMCJ75A	75	83.3 – 92.1	1	121	12.4	1
SMCG78A	SMCJ78A	78	86.7 – 95.8	1	126	11.4	1
SMCG85A	SMCJ85A	85	94.4 – 104.0	1	137	10.4	1
SMCG90A	SMCJ90A	90	100 – 111	1	146	10.3	1
SMCG100A	SMCJ100A	100	111 – 123	1	162	9.3	1
SMCG110A	SMCJ110A	110	122 – 135	1	177	8.4	1
SMCG120A	SMCJ120A	120	133 – 147	1	193	7.8	1
SMCG130A	SMCJ130A	130	144 – 159	1	209	7.2	1
SMCG150A	SMCJ150A	150	167 – 185	1	243	6.2	1
SMCG160A	SMCJ160A	160	178 – 197	1	259	5.8	1
SMCG170A	SMCJ170A	170	189 – 209	1	275	5.5	1

- For Bidirectional device types indicate a C or CA suffix after the part number. (i.e.: SMCG170CA or SMCJ170C). Bidirectional capacitance is half that shown in figure 4 at zero volts.
- Microsemi Corp's SMC series (1500 W) surface mountable packages are designed specifically for transient voltage suppression. The wide leads assure a large surface contact for good heat dissipation, and a low resistance path for surge current flow to ground. These high speed transient voltage suppressors can be used to effectively protect sensitive components such as integrated circuits and MOS devices.

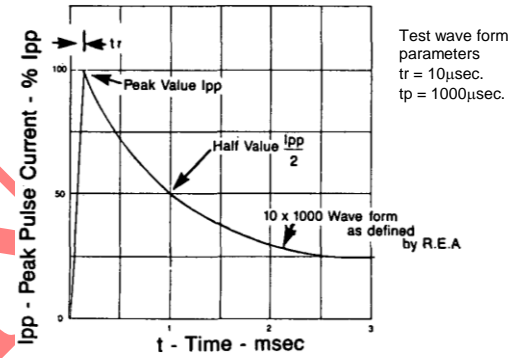
**SYMBOLS & DEFINITIONS**

Symbol	Definition	Symbol	Definition
$V_{WM}$	Working Peak (Standoff) Voltage	$I_{PP}$	Peak Pulse Current
$P_{PP}$	Peak Pulse Power	$V_C$	Clamping Voltage
$V_{(BR)}$	Breakdown Voltage	$I_{(BR)}$	Breakdown Current for $V_{(BR)}$
$I_D$	Standby Current		

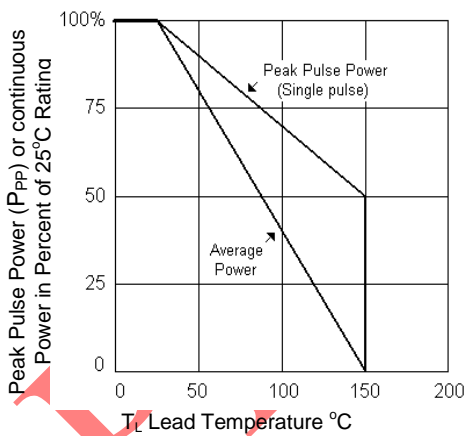
**GRAPHS**



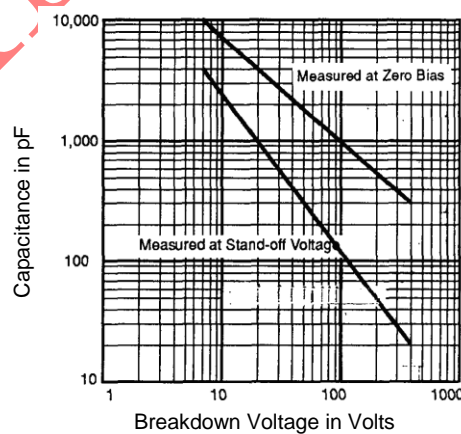
**FIGURE 1 – Peak Pulse Power vs. Pulse Time**



**FIGURE 2 – Pulse Waveform**

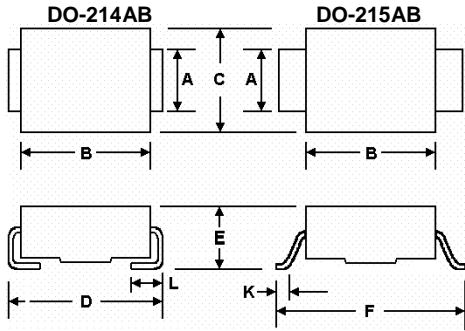


**FIGURE 3 – Derating Curve**



**FIGURE 4 – Typical Capacitance vs. Breakdown Voltage**

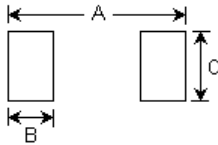
**PACKAGE DIMENSIONS**



DIMENSIONS IN INCHES								
	A	B	C	D	E	F	K	L
<b>MIN</b>	.115	.260	.220	.305	.077	.380	.025	.030
<b>MAX</b>	.121	.280	.245	.320	.104	.400	.040	.060
DIMENSIONS IN MILLIMETERS								
	A	B	C	D	E	F	K	L
<b>MIN</b>	2.92	6.60	5.59	7.75	1.95	9.65	0.635	.760
<b>MAX</b>	3.07	7.11	6.22	8.13	2.65	10.16	1.016	1.520

Typical Standoff Height: 0.004" – 0.008" (0.1mm – 0.2mm)

**PAD LAYOUT**



SMBJ (DO-214AA)

	INCHES	mm
<b>A</b>	.260	6.60
<b>B</b>	.085	2.16
<b>C</b>	.110	2.79

SMBG (DO-215AA)

	INCHES	mm
<b>A</b>	.320	8.13
<b>B</b>	.085	2.16
<b>C</b>	.110	2.79