

"Miniature" series position detectors Lever with roller bearing Part number 81921702

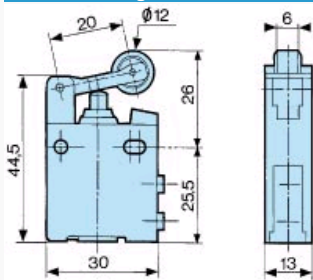


■ xxx

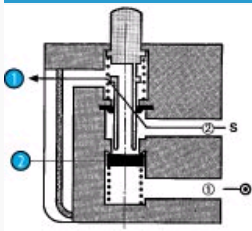
Symbol NO

Symbol NC	
Operating pressure (bar)	0,1 →8
Orifice diameter mm	2,7
Flow at 6 bars NI/min	200
Actuation force at 6 bars N	18
Circuit function: NF	■
Circuit function: NO	-
Operating temperature (° C)	-5 +50
Mechanical life (operations)	≥10 ⁷
Weight (g)	80

Dimension Diagram : 81 921 701 - 81 921 702

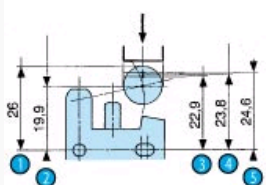


: NC



N°	Legend
1	Exhaust
2	Poppet

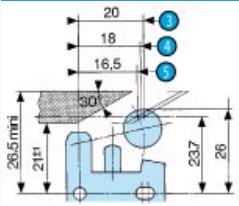
: Actuation travel Vertical attack - Simple plunger



N°	Legend
----	--------

- 1 PR: Rest position
- 2 PFC: End of travel position
- 3 PA: Operating position (max output kV)
- 4 PO: Mid-position closed (no exhaust, no outlet)
- 5 PRT: Release position (max exhaust kV)

: With lever

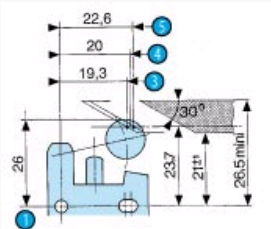


Horizontal actuating 30° cam (other angles of attack are also possible, 45° even 90°)

N° Legend

- 3 PA: Operating position (max output kV)
- 4 PO: Mid-position closed (no exhaust, no outlet)
- 5 PRT: Release position (max exhaust kV)

: With lever



Horizontal actuating 30° cam (other angles of attack are also possible, 45° even 90°)

N° Legend

- 1 PR: Rest position
- 3 PA: Operating position (max output kV)
- 4 PO: Mid-position closed (no exhaust, no outlet)
- 5 PRT: Release position (max exhaust kV)