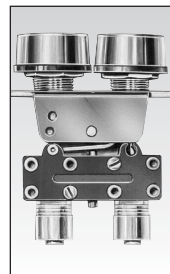
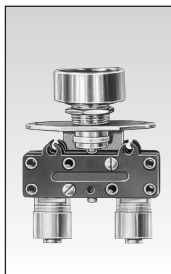


Manual Control Valves for 1/2" (12mm) hole size



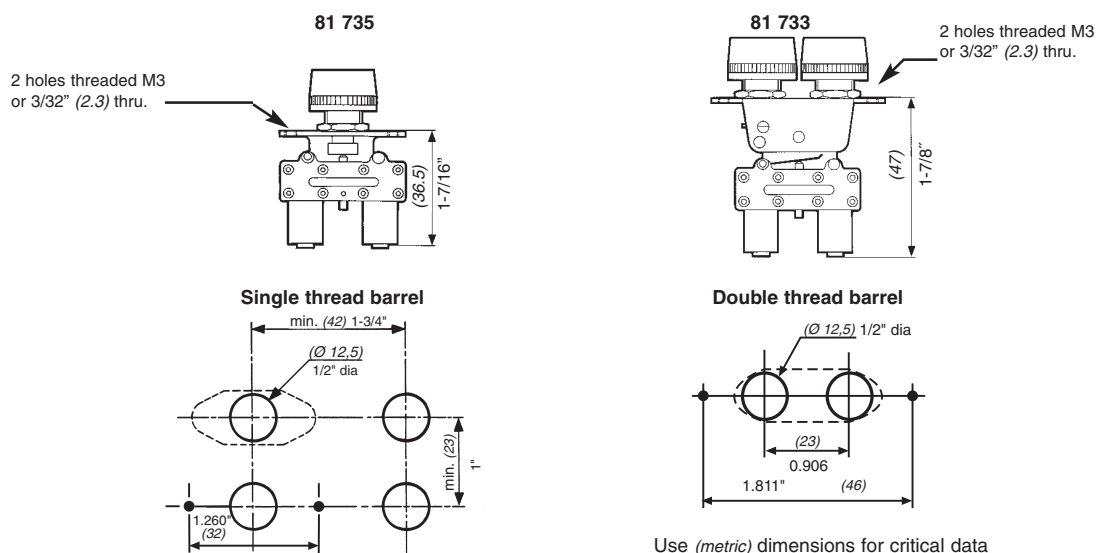
1

Part Number			Round push button	Round double push button
Features				
Version	NC	black	81 735 511	—
		red	81 735 512	—
	NO	black/red	—	81 733 511
		black	81 735 011	—
		red	—	—
		black/red	—	—

Symbol			Round push button	Round double push button
NC				
NO				

Characteristics			Round push button	Round double push button
Operating Pressure	PSI (bar)	30 > 120 (2 > 8)	30 > 120 (2 > 8)	
Internal orifice	inches (mm)	0.106" (2.7)	0.106" (2.7)	
Flow @ 90 PSI (6 bar)	cfm (Nm ³ /h)	7 (200)	7 (200)	
Valve	NC : black NO : grey	●	●	
Operating force	lbs. (N)	2 > 4 (8 > 18)	2 > 4 (8 > 18)	
Effective travel	inches (mm)	0.04 (1)	0.04 (1)	
Fluid: dry or lubricated air		●	●	
Push-in connection for semi-rigid tubing O.D. (NFE 49100)	inches (mm)	5/32" (4)	5/32" (4)	
Operating temperature	°F (°C)	+20 > +120 (-5 > +50)	+20 > +120 (-5 > +50)	
Mechanical life		1.5 million	1.5 million	
Weight	grams	35	35	

Dimensions



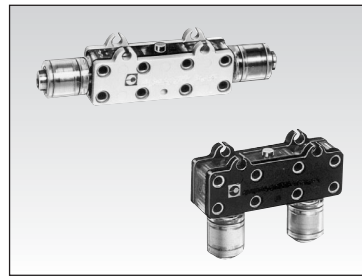
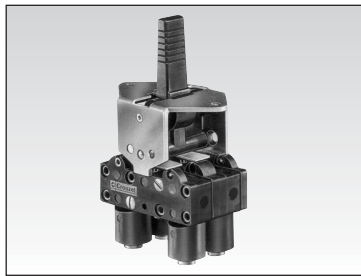
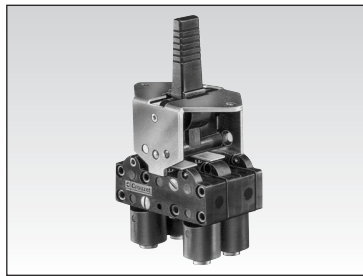
Other Information

on request

Part Numbers. : 81 702 011 / 511 - 81 715 012 - 81 716 011 / 012 - 81 731 011 / 511 - 81 733 011
81 734 011 / 012 / 511 / 512 - 81 735 012 - 81 752 012 / 512

Products and specifications subject to change without notice.

Order/Technical Support – Tel: (800) 677-5311 / FAX: (800) 677-3865 / www.crouzet-usa.com



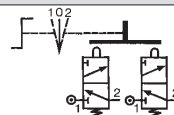
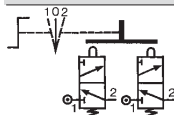
1

3 position manual return lever
81 716 511
81 716 512
—
—
—
—

3 position spring centered lever
81 715 511
81 715 512
—
—
—
—

horizontal output replacement valve
81 280 510
—
—
81 280 010
—
—

vertical output replacement valve
81 281 510
—
—
81 281 010
—
—



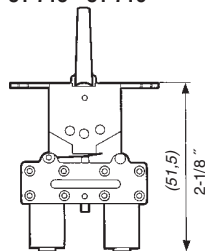
30 > 120 (2 > 8)
0.106" (2.7)
7 (200)
•
•
2 > 4 (8 > 18)
0.04 (1)
•
5/32" (4)
+20 >+120 (-5 >+50)
1.5 million
65

30 > 120 (2 > 8)
0.106" (2.7)
7 (200)
•
•
2 > 4 (8 > 18)
0.04 (1)
•
5/32" (4)
+20 >+120 (-5 >+50)
1.5 million
65

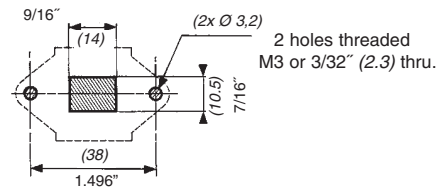
30 > 120 (2 > 8)
0.106" (2.7)
7 (200)
•
•
3 > 1/8 (15)
0.04 (1)
•
5/32" (4)
+20 >+120 (-5 >+50)
1.5 million
14

30 > 120 (2 > 8)
0.106" (2.7)
7 (200)
•
•
3 > 1/8 (15)
0.04 (1)
•
5/32" (4)
+20 >+120 (-5 >+50)
1.5 million
14

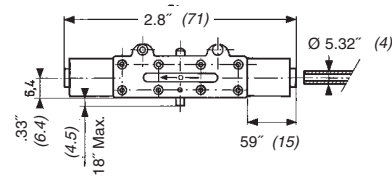
81 715 - 81 716



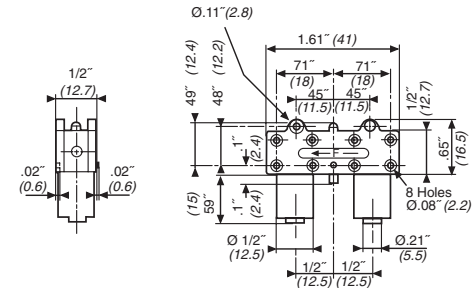
Lever cut-out



81 280 010 - 81 280 510



81 281 010 - 81 281 510



Use (metric) dimensions for critical data

To order, specify:

Standard product

1 Part number

Standard product not stocked

Example: Round push button in black-81 735 511

5

Products and specifications subject to change without notice.

Order/Technical Support – Tel: (800) 677-5311 / FAX: (800) 677-3865 / www.crouzet-usa.com

