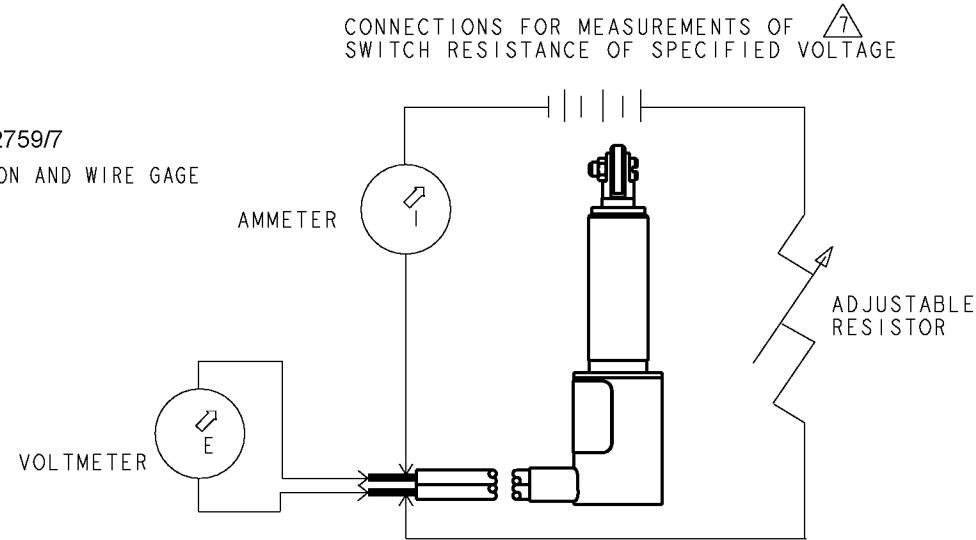
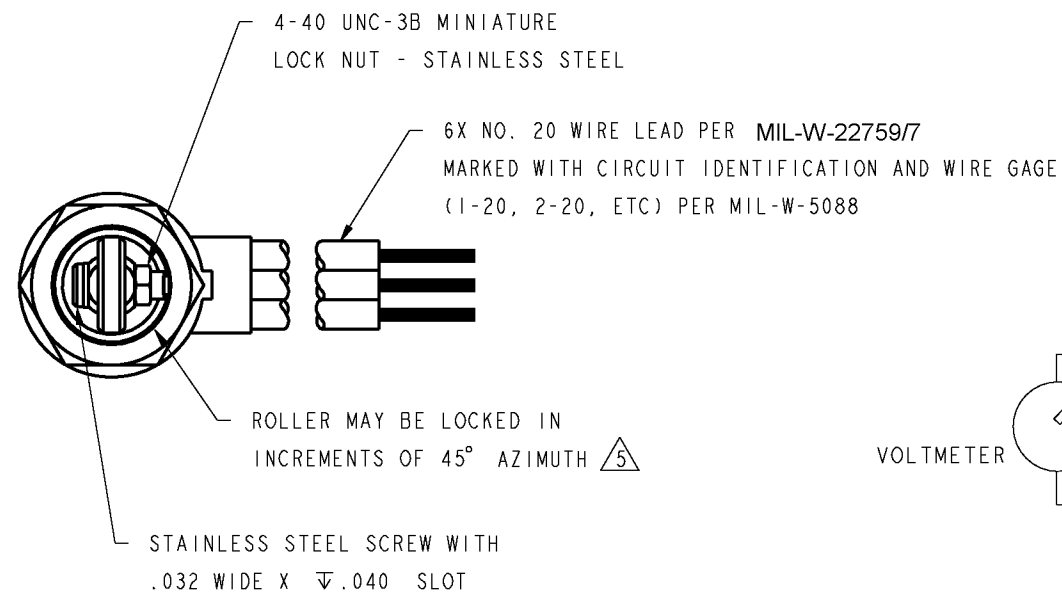
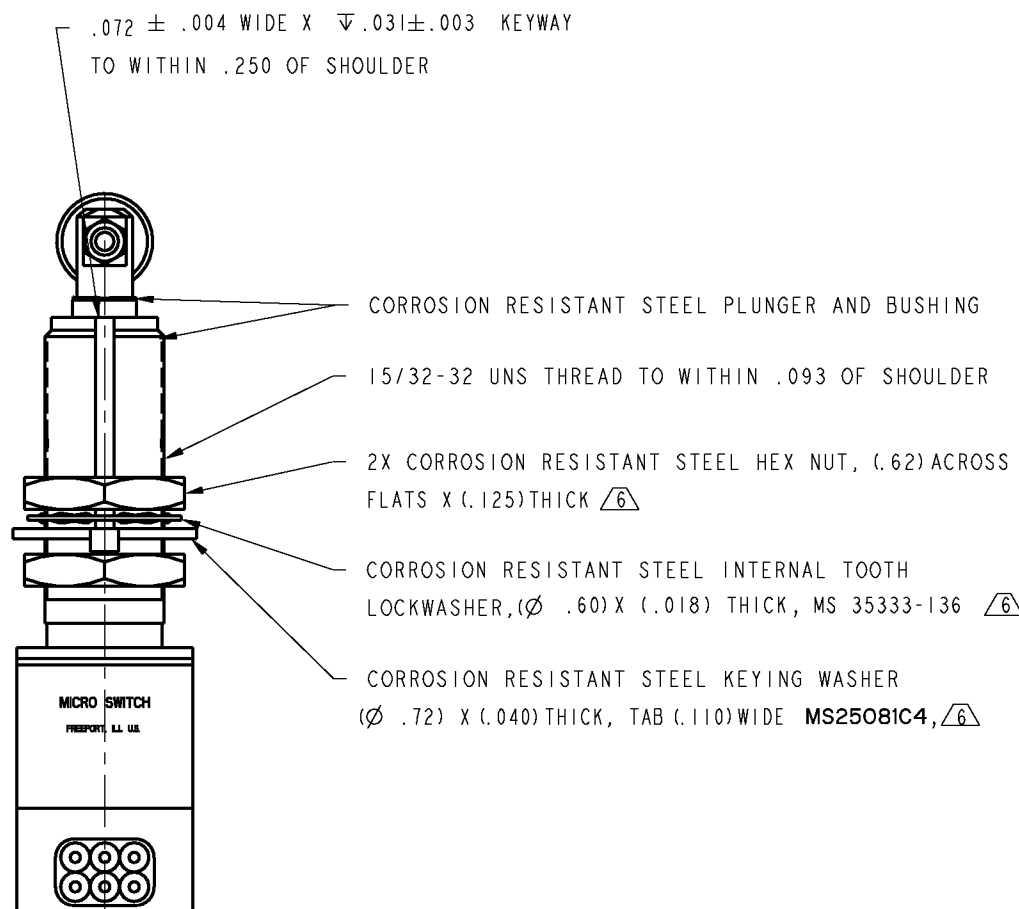
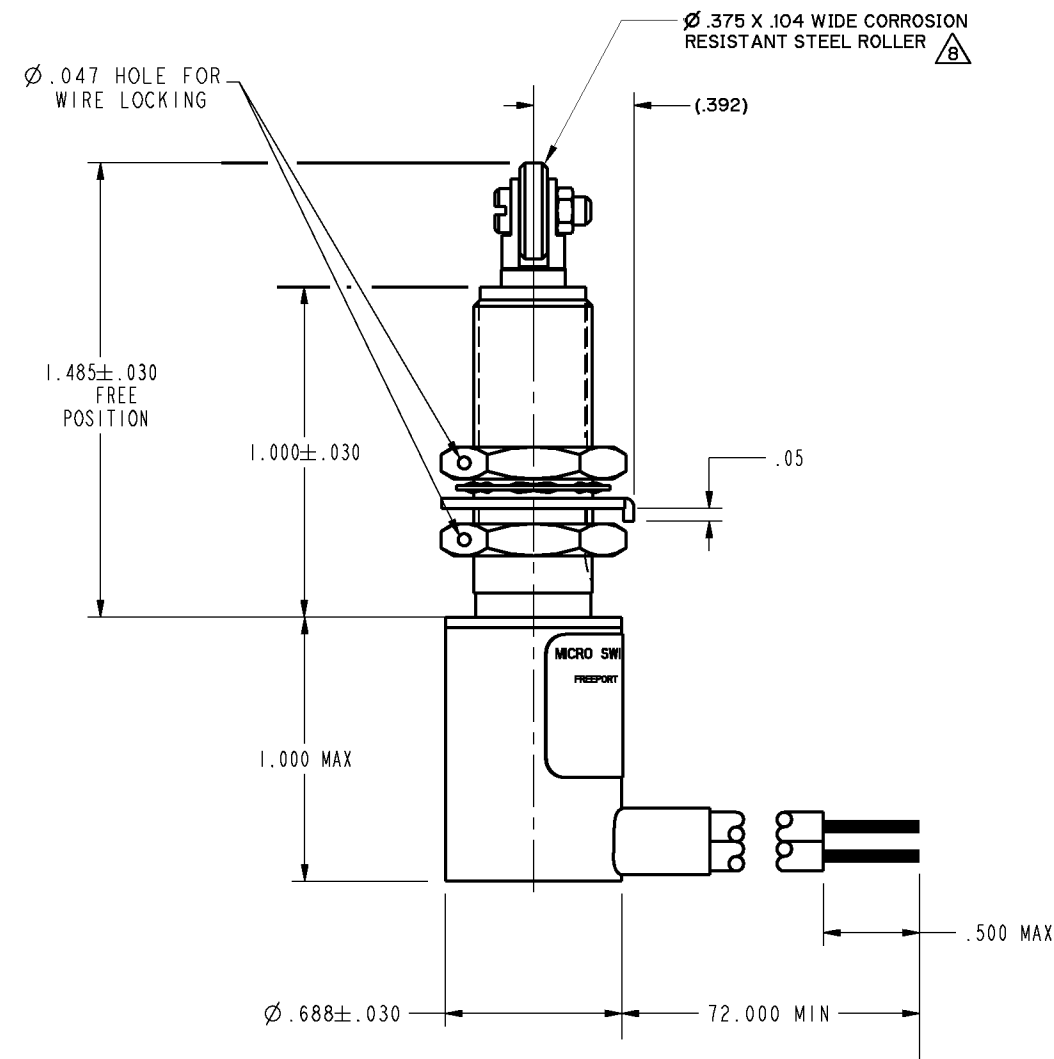


HONEYWELL
PART NUMBER
622EN28-6
FAA-PMA

REV	DOCUMENT	CHANGED BY	CHECK
17	0006861	AS 02AUG04	AK



SPECIFICATION DETAILS:		
STANDARD:	CONFORMS TO MS27240-3 (MIL-PRF-8805/43) EXCEPT AS NOTED	
CONSTRUCTION:		
ENCLOSURE DESIGN	RESILIENT SEAL PER MIL-PRF-8805, SYMBOL 4	
CONTACT MATERIAL & CONFIGURATION	SMOOTH SILVER	
CIRCUIT CONFIGURATION	S P D T (2)	
TERMINATION	LEADWIRES MIL-W-22759/7	
WEIGHT	10.1 OZ MAX	
EXTERNAL METALS	300 SERIES STAINLESS STEEL	
O-RING MATERIAL	SILICONE ELASTOMER	
ELECTRICAL CHARACTERISTICS:		
DIELECTRIC STRENGTH & INSULATION RESISTANCE		
	DIELECTRIC STRENGTH 60 Hz FOR 5 SECONDS	INSULATION RESISTANCE (500 VDC ±10%)
-BETWEEN TERMINALS AND EXPOSED NON-CURRENT CARRYING METAL	1000 V Rms, 500 μA (MAX LKG)	1000 megohms MIN
-BETWEEN TERMINALS OF MUTUALLY INSULATED CIRCUITS	1000 V Rms, 500 μA (MAX LKG)	1000 megohms MIN
-BETWEEN ALL UNCONNECTED TERMINALS OF THE SAME POLE	1000 V Rms, 500 μA (MAX LKG)	1000 megohms MIN
SWITCH RESISTANCE	①	
RECOMMENDATION FOR USE IN APPLICATIONS LESS THAN .5 amps AND/OR 12 volts	NOT RECOMMENDED ③	
ELECTRICAL RATINGS:		
28 VDC		
LOAD	SEA LEVEL	50,000 FT
RFS	7	7
IND	4	2.5
MOTOR	4	N/A
MECHANICAL CHARACTERISTICS:		
CHARACTERISTICS		
COINCIDENCE OF OPERATING AND RELEASING POINTS	.010 OF PLUNGER TRAVEL	
OPERATING FORCE	6-12 LBS	
FULL OVERTRAVEL FORCE	30 LBS MAX	
RELEASE FORCE	4 LBS MIN	
PRETRAVEL	.025±.015	
DIFFERENTIAL TRAVEL	.020 MAX	
OVERTRAVEL	.125 MIN	
MOUNTING TORQUE	15 IN-LBS RECOMMENDED PER MIL-PRF-8805	
MOUNTING STRENGTH	30-IN LBS MAX WILL NOT CAUSE SWITCH DAMAGE	
ACTUATOR STRENGTH	30 LBS APPLIES IN A DIRECTION TO CAUSE SWITCH ACTUATION	
LIFE:		
MECHANICAL LIFE	25,000 MIN PER MIL-PRF-8805/43 ②	
ELECTRICAL LIFE AT FULL RATED LOAD	25,000 MIN PER MIL-PRF-8805/43 ②	
ENVIRONMENTAL:		
TEMPERATURE RANGE	-55° C +85° C	
ALTITUDE RANGE	SEA LEVEL TO 50,000 FEET	
SHOCK	PER MIL-PRF-8805 SYMBOL M - 100g	
VIBRATION	PER MIL-PRF-8805 SYMBOL 2 10-2000 Hz & 15 g peak	
MOISTURE RESISTANCE	PER MIL-PRF-8805 (10 DAY TEST)	
THERMAL SHOCK	PER MIL-PRF-8805 (5 CYCLE TEST)	
SALT SPRAY	PER MIL-PRF-8805 (96 HOUR TEST)	



- NOTES
- ① CONTACT HONEYWELL - MICRO SWITCH IF ADDITIONAL INFORMATION ON LOW ENERGY LOADS IS REQUIRED OR FOR HELP WITH SPECIFIC APPLICATIONS
 - ② LIFE RATINGS ARE PER MIL-PRF-8805 REQUIREMENTS. ACTUAL LIFE EXCEEDS RATED LIFE.
 - ③ CONTACT HONEYWELL - MICRO SWITCH FOR ADDITIONAL DATA
 - ④ CIRCUIT DIAGRAM, CATALOG LISTING, DATE CODE, FED MFG CODE AND FAA-PMA ARE SHOWN ON NAMEPLATE
 - ⑤ COINCIDENCE OF OPERATING AND RELEASING POINTS: .010 OF PLUNGER TRAVEL
 - ⑥ TO ADJUST ROLLER DIRECTION REMOVE LOCK NUT, SCREW AND ROLLER. DEPRESS PLUNGER UNTIL IT CAN BE ROTATED TO DESIRED POSITION. RETURN PLUNGER TO FREE POSITION AND REASSEMBLE ROLLER
 - ⑦ HARDWARE MAY BE PACKAGED UNASSEMBLED PER MIL-PRF-8805
 - ⑧ MICRO SWITCH RECOMMENDS MEASURING SWITCH RESISTANCE WITH THE 4 - WIRE (VOLTAGE DROP) METHOD AT FREE POSITION AND FULL OVERTRAVEL. SWITCH RESISTANCE NOT TO EXCEED 1% OF LOAD IMPEDANCE (1% OF 4 OHMS FOR 28 VDC, 7A = .04 OHMS MAX)
 - ⑨ ROLLER PLUNGER ACTUATOR FOR USE WITH 30° MAX RISE ON CAM OR SLIDE ACTION
 - ⑩ FOR MANUFACTURING DETAIL SEE ASSEMBLY DRAWING 622EN28-6 FOR FAA-PMA

REPLACES: X37946-EN

DESIGN UNITS: INCH TOLERANCES UNLESS NOTED:	DRAWN LJK 18MAY99	Honeywell			
NO PLACE X ± 0.040 ONE PLACE .X ± 0.030 TWO PLACE .XX ± 0.015 THREE PLACE .XXX ± 0.005 FOUR PLACE .XXXX ± 0.0005 ANGLES ± 2	CHECK JAF 18MAY99				
THIRD ANGLE PROJECTION	THIS DRAWING COVERS A PROPRIETARY ITEM AND IS THE PROPERTY OF HONEYWELL. THIS DRAWING IS NOT TO BE COPIED OR USED WITHOUT THE PERMISSION OF HONEYWELL.		TITLE SWITCH-ENCLOSED		
	INTERPRET PER ASME Y14.5M-1994 OTHER HONEYWELL ENGINEERING STANDARDS MAY APPLY	SIZE C	TYPE I	DRAWING NAME 622EN28-6	REV 17
	RASTER	SCALE FULL	SHEET 1 OF 1		