

Telco Adapters

Retail Part No.	Bulk Part No.	Fig. No.	Description
45-5108	45-5108-BU	1	4C (RJ11)/DB9 Male
45-5109	45-5109-BU	1	6C (RJ12)/DB9 Male
45-5110	45-5110-BU	1	8C (RJ45)/DB9 Male
45-5111	45-5111-BU	2	4C (RJ11)/DB9 Female
45-5112	45-5112-BU	2	6C (RJ12)/DB9 Female
45-5113	45-5113-BU	2	8C (RJ45)/DB9 Female
45-5117	45-5117-BU	3	8C (RJ45)/DB15 Female
45-5120	45-5120-BU	5	8C (RJ45)/DB15 Male

Telco Adapters (Cont.)

Retail Part No.	Bulk Part No.	Fig. No.	Description
45-5121	45-5121-BU	6	4C (RJ11)/DB25 Male
45-5122	45-5122-BU	6	6C (RJ12)/DB25 Male
45-5123	45-5123-BU	6	8C (RJ45)/DB25 Male
45-5124	45-5124-BU	6	10C (RJ45)/DB25 Male
45-5125	45-5125-BU	7	4C (RJ11)/DB25 Female
45-5126	45-5126-BU	7	6C (RJ12)/DB25 Female
45-5127	45-5127-BU	7	8C (RJ45)/DB25 Female

Modular Pin Wire Color Code (for 45-5108 to 45-5128)

Wire	Purple	Blue	Orange	Black	Red	Green	Yellow	Brown	Gray	White
10C-RJ45	1	2	3	4	5	6	7	8	9	10
8C-RJ45		1	2	3	4	5	6	7	8	
6C-RJ12		6		2	3	4	5			1
4C-RJ11				1	2	3	4			

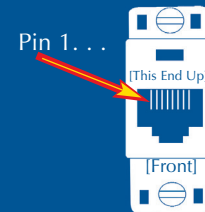


Fig. 8

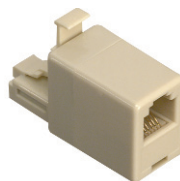


Fig. 10



Fig. 11

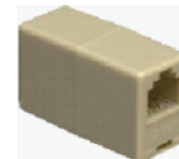


Fig. 12

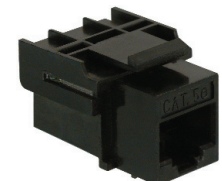


Fig. 13

Telco Balun

Retail Part No.	Bulk Part No.	Figure No.	Description
45-5407	45-5407-BU	8	Adapter BNC Male/4C (RJ11) Female

Adapters

Retail Part No.	Bulk Part No.	Figure No.	Description
45-4506		10	USOC (Telephone) RJ12 Female/8P6C (RJ45) Male Cat 5
45-4545		10	USOC (Telephone) RJ45 Male/8C (RJ45) Female Cat 5
45-6645		11	USOC 6C RJ12 Male/8P6C (RJ45) Female USOC

Inline Couplers

Retail Part No.	Bulk Part No.	Figure No.	Description
45-5439	45-5439-BU	13	Cat 5e Coupler, 8C (RJ45) Female/Female
30-9685	30-9685-BU	12	Straight through - Data Communications Modular In-Line Coupler 2 Female 8 Contacts White