

SHELL SIZE		E	F	G	H	J	MAX DASH NO (TABLE I)	
A	F, L	MAX	MAX	MAX	MAX	REF	A	F, H, L
08	08	.75	1.50	.639	1.38	.45	01	01
10	10	.81	1.55	.664	1.41	.58	02	02
12	12	.87	1.61	.688	1.43	.69	04	04
14	14	.92	1.68	.705	1.46	.82	04	05
16	16	.98	1.74	.732	1.48	.94	05	06
18	18	1.02	1.76	.748	1.49	1.03	06	07
20	20	1.08	1.82	.773	1.51	1.16	07	08
22	22	1.14	1.90	.800	1.55	1.28	08	09
24	24	1.20	1.97	.823	1.58	1.41	09	10
28	-	1.48	2.21	1.041	1.75	1.56	10	-
32	-	1.61	2.30	1.092	1.79	1.78	10	-
36	-	1.72	2.41	1.138	1.84	2.00	10	-
40	-	1.83	2.52	1.184	1.88	2.21	10	-

DASH NO	K	L	CABLE ENTRY	
			MIN	MAX
01	.843	.78	1.25	.250
02	.968	.97	1.56	.375
03	1.046	1.05	2.50	.438
04	1.156	1.15	2.80	.500
05	1.218	1.22	.375	.625
06	1.343	1.34	5.00	.750
07	1.468	1.47	.625	.875
08	1.593	1.59	.750	1.000
09	1.718	1.72	.875	1.125
10	1.843	1.84	1.000	1.250

TABLE I

SYM.	DESCRIPTION	DATE	APPROVED
A	RELEASED	01/10/90	T.L.
B	REVISED PER DCN 09409	10/02/91	T.L.
C	REVISED PER DCN 13195	05/13/97	T.L.
D	REVISED PER DCN 29155	03/11/08	MAG
E	REVISED PER DCN 31936	03/23/09	T.L.

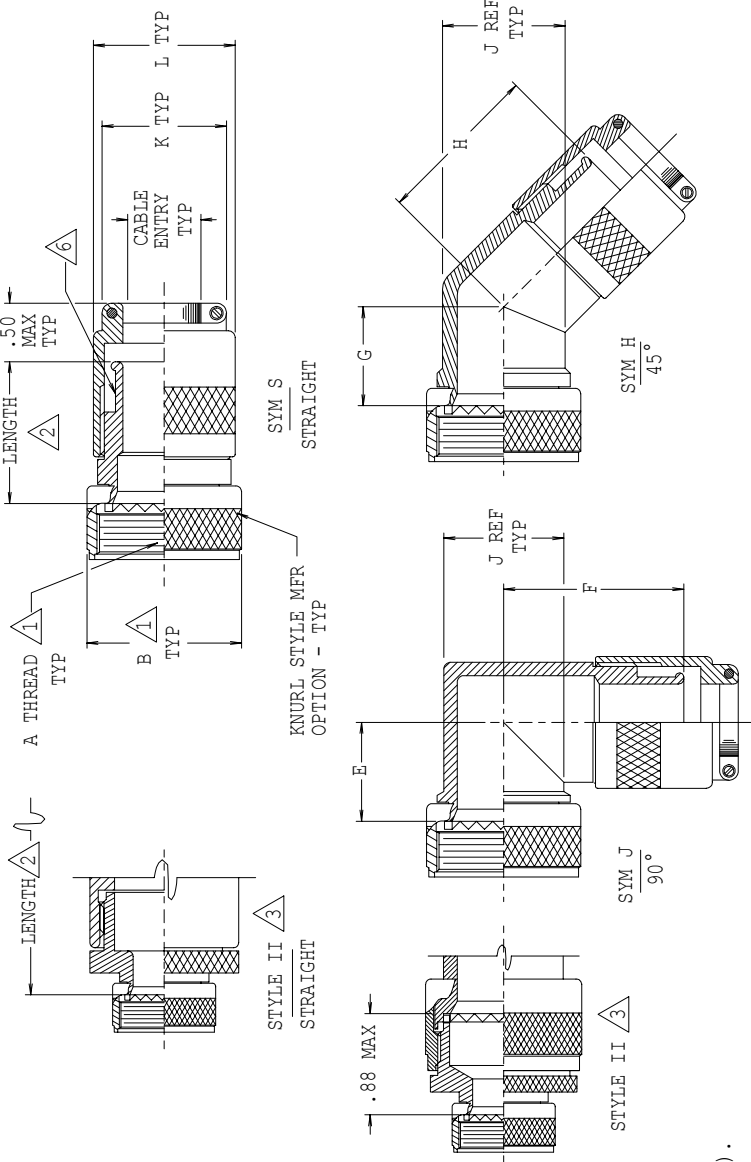
TABLE II

(SEE PART NUMBER DEVELOPMENT)

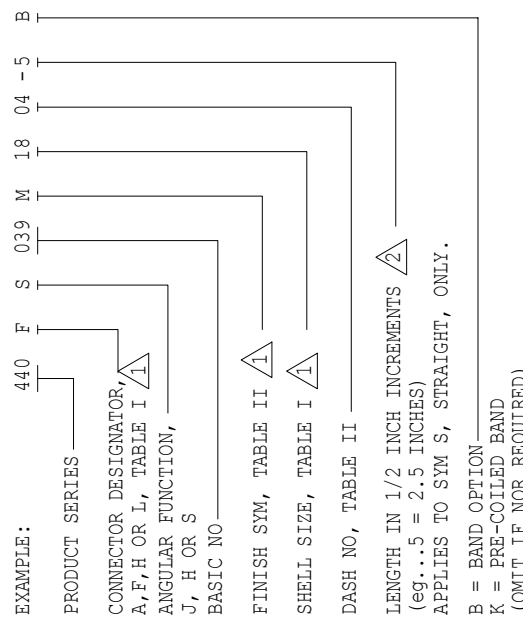
SYMBOL

BAND OPTION

(SEE PART NUMBER DEVELOPMENT)



PART NUMBER DEVELOPMENT



- 1. SEE SHEET 2 (COMMON ACCESSORY INTERFACE DATA STD-001).
- 2. STANDARD MINIMUM LENGTH FOR STYLE I IS 1.00 INCHES, FOR STYLE II IS 1.50 INCHES. FOR SHORTER LENGTH, CONSULT FACTORY. NOTE: APPLIES TO SYM S, STRAIGHT, ONLY.
- 3. WHEN CABLE DIAMETER EXCEEDS 'MAX DASH NO' IN TABLE I, STYLE II WILL BE SUPPLIED.

- 4. FOR EFFECTIVE GROUNDING, CONNECTOR WITH CONDUCTIVE FINISH SHOULD BE USED.
- 5. GLENNAIR 600 SERIES BACKSHELL ASSEMBLY TOOLS ARE RECOMMENDED FOR ASSEMBLY AND INSTALLATION.
- 6. FOR SHELL TERMINATION SEE GLENNAIR DRAWINGS 600-050 & 600-052.
- 7. MATERIAL/FINISH: ADAPTERS, ELBOWS, COUPLING NUTS, FERRULE, CLAMP - AL ALLOY/SEE TABLE II HARDWARE - CRES/PASSIVATE

UNLESS OTHERWISE SPECIFIED DIMENSIONS ARE IN INCHES

TOLEANCES:

FRACTIONS ± 1/16
 DECIMALS .XX ±.03
 .XXX ±.015
 ANGLES ± 2°

DO NOT SCALE THIS DRAWING

B/F 90-1134 P/C 44

NON REPAIRABLE COMMERCIAL ITEM

SCALE N/A WEIGHT N/A SHEET 1 OF 2

CODE IDENT. NO. SIZE 06324 C 440-039 REV. E

REVISIONS

DRAWN T.L.E 01/10/90
 CHECK G.BURGE 01/10/90
 ENGR P.OAKES 01/10/90

APPROVED: R. Bertsch
 APPROVED: P. D. Cook

RELEASE DATE 01/10/90
 RELEASE DATE

1211 AIR WAY - GLENDALE - CALIFORNIA 91201

GLENNAIR, INC.

ADAPTER, RFI/EMI, BANDING,
 FOR CONNECTORS PER TABLE I

© CAD 1989