

REV. AG	SHEET 1 OF 3	DOCUMENT NO. 10-497623
REVISIONS		
LTR	DESCRIPTION	DATE
AF	(CL 11) REDRAWN SEE CHG NOTICE ECN: A0386-0000	-
AG	(CL 11) SEE ENG CHG ECN: A2009	DJSMITH 1/17/07

10-497623

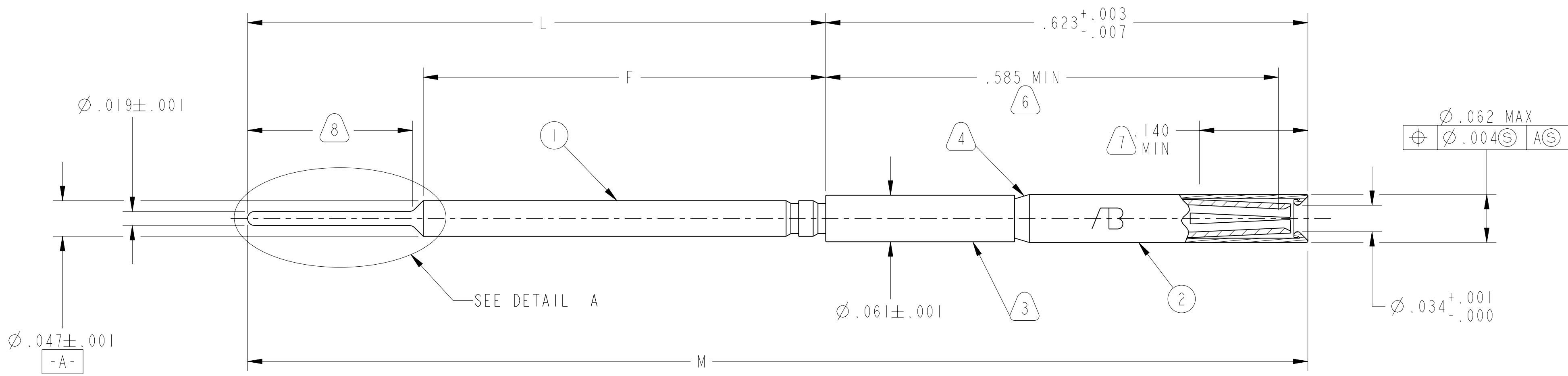
SHEET 1 OF 3

REV. AG

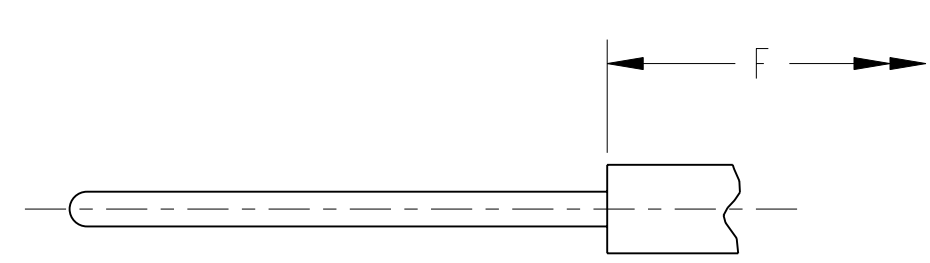
C

B

A



TYPE I



DETAIL A
TYPE II

SEE SHEET 2

NOTES:

THE USE OF THIS DOCUMENT IS UNLIMITED. HOWEVER, DOCUMENTS REFERENCED HEREON MAY CONTAIN LIMITED RIGHTS DATA.

N/A	PRO/ENGINEER INFORMATION Pro/e Model Used: 10-497623.ASSEM Drawing Name: 10-497623
N/A	NEXT ASSEMBLY

UNLESS OTHERWISE SPECIFIED

SPECIFICATIONS

MATERIAL SPEC. N/A

PROCESS SPEC. SEE NOTE 5

LINEAR DIMENSIONS ARE IN INCHES
TOLERANCES:
.XXXX = ±.0005 ANGLES= ±2°
.XXX = ±.010
.XX = ±.03
.X = ±.1

DIM. & TOL. PER ASME Y14.5M;
DRM PER MIL-DTL-31000;
OTHER Amphenol Stds. PER 9-3800

LEGENDS:
=FLAG NOTE CALL OUT REFERENCE ONLY

2	1	10-407914-23B	SLEEVE
1	1	SEE TABLE	CONTACT, SOCKET
POS	QTY	PART NUMBER	DESCRIPTION

APPROVALS		DATE
PREPARED BY	E. PLACE	18-May-06
ENGINEER IN CHARGE	L. RATCHFORD	
DESIGN MANAGER	H. JOHNSON	
DESIGN ACTIVITY GROUP	MIL-AERO DEVELOP	
THIRD ANGLE PROJECTION		

PARTS LIST			
AMPHENOL CORPORATION 40-60 DELAWARE AVENUE SIDNEY, N.Y. 13858			
CONTACT, SOCKET, ELECTRICAL CONNECTOR, SIZE 22D, PCB, TYPE LJT-R			
SIZE C	CAGE CODE 77820	DOCUMENT NO. 10-497623	REV. AG
SCALE: 10:0		REF. 10-407553	SHEET 1 OF 3

D

C

VERSION 01

REV. AG

RELEASE STATE ECN

REV. AG

SHEET 1 OF 3

10-497623

DOCUMENT NO.

10-497623

SHEET 2 OF 3

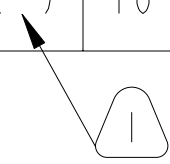
AG

C

B

A

PART NUMBER	CONTACT	F	L	M REF	APPROX. MEAN SURFACE AREA (SQ. IN.)	TYPE
10-497623-01()	10-497623-01B	.460 ⁺ .000 -.015	.816±.005	1.439	.2139	
10-497623-02()	10-497623-02B	1.123 ⁺ .000 -.015	1.393±.005	2.016	.3427	
10-497623-03()	10-497623-03B	.460 ⁺ .000 -.015	.873±.005	1.496	.2171	
10-497623-04()	10-497623-04B	.460 ⁺ .000 -.015	.733±.005	1.356	.2092	
10-497623-05()	10-497623-05B	.460 ⁺ .000 -.015	1.031±.005	1.654	.2261	
10-497623-06()	10-497623-06B	1.000 ⁺ .000 -.015	1.393±.005	2.016	.3260	
10-497623-07()	10-497623-07B	.460 ⁺ .000 -.015	.671±.005	1.294	.2057	
10-497623-08()	10-497623-08B	.460 ⁺ .000 -.015	.768±.005	1.391	.2112	I
10-497623-09()	10-497623-09B	.525 ⁺ .000 -.015	.700±.005	1.323	.2167	
10-497623-10()	10-497623-10B	.460 ⁺ .000 -.015	.553±.005	1.176	.1989	
10-497623-11()	10-497623-11B	.460 ⁺ .000 -.015	1.091±.005	1.714	.2295	
10-497623-12()	10-497623-12B	.525 ⁺ .000 -.015	.665±.005	1.288	.2147	
10-497623-13()	10-497623-13B	.840±.005	1.090±.005	1.713	.2856	
10-497623-14()	10-497623-14B	.900 ⁺ .000 -.015	1.139 ⁺ .000 -.015	1.762	.2956	
10-497623-15()	10-497623-15B	.460±.005	.948±.005	1.571	.2225	



4. CRIMP SLEEVE TIGHTLY TO CONTACT.
3. PLATE CONTACT BEFORE ASSEMBLY OF SLEEVE.
2. ALL DIMENSIONS ARE AFTER PLATING.
1. ADD SUFFIX CHARACTER FOR FINISH:
- | | |
|------------------|--------------------------|
| SUFFIX CHARACTER | FINISH |
| 2 | GOLD PLATE 9-6800-2 |
| 3 | GOLD PLATE 9-6800-3 |
| 4 | GOLD PLATE 9-6800-4 |
| 5 | GOLD PLATE 9-6800-5 |
| F | GOLD PLATE 9-6800-F |
| H | GOLD PLATE 9-6800-H |
| X | GOLD PALLADIUM NI 9-9111 |
| C | GOLD PLATE 9-6800-C |

NOTES:

THE USE OF THIS DOCUMENT IS UNLIMITED. HOWEVER, DOCUMENTS REFERENCED HEREON MAY CONTAIN LIMITED RIGHTS DATA.

PART NUMBER	CONTACT	F	L	M REF	APPROX. MEAN SURFACE AREA (SQ. IN.)	TYPE
10-497623-16()	10-497623-16B	.340±.010	.453±.005	1.076	.1770	
10-497623-17()	10-497623-17B	.212 ⁺ .000 -.015	2.392±.005	3.015	.2676	
10-497623-18()	10-497623-18B	.280 ⁺ .000 -.015	.585±.005	1.208	.1747	
10-497623-19()	10-497623-19B	.303±.005	.454±.003	1.077	.1717	I
10-497623-20()	10-497623-20B	1.123 ⁺ .000 -.015	1.427±.005	2.050	.3447	
10-497623-21()	10-497623-21B	.275±.003	.477±.005	1.100	.1689	
10-497623-22()	10-497623-22B	.439±.010	.590±.005	1.213	.1991	
10-497623-23()	10-497623-23B	.485±.005	.739±.003	1.362	.2142	
10-497623-24()	10-497623-24B	.415±.007	.790±.003	1.413	.2048	I
10-497623-25()	10-497623-25B	.729±.003	.953±.005	1.576	.2683	II
10-497623-26()	10-497623-26B	.486 ⁺ .000 -.015	1.048±.010	1.671	.2221	I
10-497623-27()	10-497623-27B	.525 ⁺ .000 -.015	1.102±.003	1.725	.2761	
10-497623-28()	10-497623-28B	.621±.005	.801±.005	1.424	.2233	
10-497623-29()	10-497623-29B	.876±.005	1.073±.005	1.696	.2878	II
10-497623-30()	10-497623-30B	.590±.003	.690±.003	1.313	.2184	

8. INDICATED AREA SHALL BE CAPABLE OF MEETING THE SOLDERABILITY REQUIREMENTS OF 9-8825 AFTER STEAM AGING.
7. A .0305+.0002-.0000 DIA HARDENED STEEL PIN SHALL ENGAGE SOCKET WITH A FORCE NOT GREATER THAN 9 OZ. A .0295+.0000-.0002 DIA HARDENED STEEL PIN SHALL DISENGAGE SOCKET WITH A FORCE NOT LESS THAN 1.25 OZ. PINS SHALL HAVE A SPHERICAL TIP AND A 3/ FINISH AND ENGAGE SOCKET .140 MIN.
6. INDICATED DIMENSION TO BE FROM REAR OF SHOULDER TO POINT OF ENGAGEMENT OF SOCKET AND A .0300±.0002 DIA SQUARE END PIN.
5. PROCESS SPEC:
TEST 9-5272-16, 9-8825
9-68000, 9-9111

FORMAT: C-U-E-1

RELEASE STATE ECN

SHEET 2 OF 3

10-497623

AG

10-497623

SHEET 3 OF 3

AG

C

B

A

PART NUMBER	CONTACT	F	L	M REF	APPROX MEAN SURFACE AREA (SQ. IN.)	TYPE
10-497623-31()	10-497623-31B	.460 ^{+.000} _{-.015}	.783±.005	1.406	.2117	I
10-497623-32()	10-497623-32B	.804±.005	1.129±.003	1.752	.2848	I
10-497623-33()	10-497623-33B	.479±.005	.754±.003	1.377	.2082	I
10-497623-34()	10-497623-34B	.460±.005	1.203±.003	1.826	.2428	I
10-497623-35()	10-497623-35B	.450±.005	.880±.005	1.503	.2184	II
10-497623-36()	10-497623-36B	.520±.003	.747±.005	1.370	.2164	II
10-497623-37()	10-497623-37B	.730±.003	.830±.002	1.453	.2272	I
10-497623-38()	10-497623-38B	.460 ^{+.000} _{-.015}	1.017±.003	1.640	.2272	I
10-497623-39()	10-497623-39B	1.577±.005	1.687±.005	2.310	.4001	II
10-497623-40()	10-497623-40B	.280 ^{+.000} _{-.015}	.782±.005	1.405	.1899	II
10-497623-41()	10-497623-41B	.588 ^{+.003} _{-.000}	.730±.003	1.353	.2141	I
10-497623-42()	10-497623-42B	.623±.005	.748±.005	1.371	.2170	I
10-497623-43()	10-497623-43B	.340±.005	.460±.005	1.083	.1761	I
10-497623-44()	10-497623-44B	.280 ^{+.000} _{-.015}	.782±.005	1.405	.1899	I
10-497623-45()	10-497623-45B	1.450 ^{+.000} _{-.015}	2.167±.003	2.790	.3714	I

PART NUMBER	CONTACT	F	L	M REF	APPROX MEAN SURFACE AREA (SQ. IN.)	TYPE
10-497623-46()	10-497623-46B	.520±.005	.833±.002	1.456	.2215	I
10-497623-47()	10-497623-47B	.600±.003	.700±.003	1.323	.2170	II
10-497623-48()	10-497623-48B	.280 ^{+.000} _{-.015}	.550±.005	1.173	.1761	I
10-497623-49()	10-497623-49B	.280±.005	.805±.005	1.428	.1913	I
10-497623-50()	10-497623-50B	.257±.005	.503±.005	1.126	.1652	I
10-497623-51()	10-497623-51B	.280 ^{+.000} _{-.015}	.715±.005	1.338	.1934	I
10-497623-52()	10-497623-52B	.580±.003	.830±.005	1.453	.2212	I
10-497623-53()	10-497623-53B	.460 ^{+.000} _{-.015}	.965±.003	1.588	.2184	I
10-497623-54()	10-497623-54B	.479±.005	1.054±.005	1.677	.2253	II
10-497623-55()	10-497623-55B	.750±.005	1.060±.005	1.683	.2494	II
10-497623-56()	10-497623-56B	.800±.005	.986±.005	1.609	.2492	I
10-497623-57()	10-497623-57B	.280 ^{+.000} _{-.015}	.420±.003	1.043	.1716	I
10-497623-58()	10-497623-58B	.637±.003	1.075±.004	1.698	.2373	II
10-497623-59()	10-497623-59B	.460 ^{+.000} _{-.015}	.850±.005	1.473	.2089	I
10-497623-60()	10-497623-60B	.600±.005	.938±.005	1.561	.2262	I
10-497623-61()	10-497623-61B	.410±.003	.690±.003	1.313	.1954	II
10-497623-62()	10-497623-62B	.438±.005	.754±.003	1.377	.2047	II

SEE SHEET 2

NOTES:

THE USE OF THIS DOCUMENT IS UNLIMITED. HOWEVER, DOCUMENTS REFERENCED HEREON MAY CONTAIN LIMITED RIGHTS DATA.

SIZE C	CAGE CODE 77820	DOCUMENT NO. 10-497623	REV. AG
SCALE: 10.0		REF: 10-407553	SHEET 3 OF 3

10-497623

SHEET 3 OF 3

AG

ECN

AG

0-

C

D