

LOC	DIST	REVISIONS			
H	-	LTR	DESCRIPTION	DATE	APVD
		F1	REVISED PER ECO-11-005294	27APR11	HMR

1 CONSTRUCTION

1.1 Conductor:

- 1.1.1 Construction: Stranded 7x0.127 mm copper tin plated
- 1.1.2 Cross-section: 28AWG (0.089 mm²)
- 1.1.3 Diam.: 0.39 mm

1.2 Insulation:

- 1.2.1 Material: PVC 105°C
- 1.2.2 Insulation thickness: nom. 0.25 mm
- 1.2.3 Diam.: 0.93 mm
- 1.2.4 Pitch: 1.27 (see Table 1)
- 1.2.5 Colour: Gray RAL7032
Conductor #1 Red
- 1.2.6 Shore hardness: 94

2. Electrical requirements:

- 2.1 DC Resistance: 216 Ohm/km at 20°C
- 2.2 Insulation Resistance: 100 MOhm x km at 20°C
- 2.3 Max Operating Voltage: 300V at 50Hz
- 2.4 Test voltage: min. 2000V 50Hz at 1Min
- 2.5 Capacitance: max. 60pF/m

3 Mechanical Requirements

3.1 Temperature Range

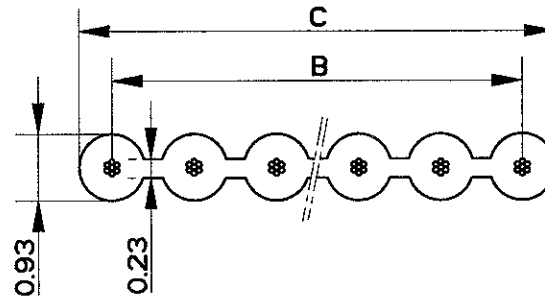
fixed	-30°C	+105°C	
fixed	-40°C	+105°C	according DIN72551
moving	-20°C	+105°C	

4 Certification: UL2651

CSA
VDE 0811

5 Dimensions (see Table 1)

6 Remarks: Length per Reel has to be splice free



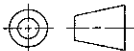
RELEASED FOR PUBLICATION

ALL RIGHTS RESERVED.

THIS DRAWING IS UNPUBLISHED.

BY COPYRIGHT

DIMENSIONS: mm TOLERANCES UNLESS OTHERWISE SPECIFIED: 0 PLC ± . 1 PLC ± . 2 PLC ± . 3 PLC ± . 4 PLC ± . ANGLES ± .	DWN	F.VRIELINK	MATERIAL	FINISH	
	CHK	B.MAAS	TE Connectivity		
	APVD	J.V.GRUNSVEN			
	PRODUCT SPEC	-	NAME	FLAT RIBBON CABLE 28AWG PITCH 1.27 mm	
APPLICATION SPEC	-	SIZE	CAGE CODE	DRAWING NO	
WEIGHT	-	A4	00779	C-167019	
CUSTOMER DRAWING			SCALE	SHEET	1 OF 2 REV F1



LOC	DIST	REVISIONS		
H	-	LTR	DESCRIPTION	DATE
			SEE SHEET 1	

TABLE 1

Length per Reel (m)	C (mm)	B (mm)	Number of Conductors	Partnumber
100	80.94	80.01	64	6-167019-4
100	75.86	74.93	60	6-167019-0
100	63.16	62.23	50	5-167019-0
100	50.46	49.53	40	4-167019-0
100	46.65	45.72	37	3-167019-7
100	42.84	41.91	34	3-167019-4
100	32.68	31.75	26	2-167019-6
100	31.41	30.48	25	2-167019-5
100	30.14	29.21	24	2-167019-4
450	25.06	24.13	20	2-167019-0
500	22.52	21.59	18	1-167019-8
600	19.98	19.05	16	1-167019-6
625	18.71	17.78	15	1-167019-5
650	17.44	16.51	14	1-167019-4
700	14.90	13.97	12	1-167019-2
900	12.36	11.43	10	1-167019-0
950	11.09	10.16	9	0-167019-9
1000	9.82	8.89	8	0-167019-8
1300	7.28	6.35	6	0-167019-6
1800	4.74	3.81	4	0-167019-4

RELEASED FOR PUBLICATION

THIS DRAWING IS UNPUBLISHED.

ALL RIGHTS RESERVED.

BY

© COPYRIGHT

DIMENSIONS: mm	DWN	F.VRIELINK	MATERIAL		FINISH	
	CHK	BMAAS <i>BM</i>	TE Connectivity			
TOLERANCES UNLESS OTHERWISE SPECIFIED:		APVD				
0 PLC ± -	PRODUCT SPEC	NAME				FLAT RIBBON CABLE 28AWG PITCH 1.27 mm
1 PLC ± -	APPLICATION SPEC	SIZE	CAGE CODE	DRAWING NO		
2 PLC ± -	WEIGHT	A4	00779	C-167019		
3 PLC ± -	CUSTOMER DRAWING	SCALE		SHEET	2 OF 2	REV F1
4 PLC ± -						
ANGLES ± -						

