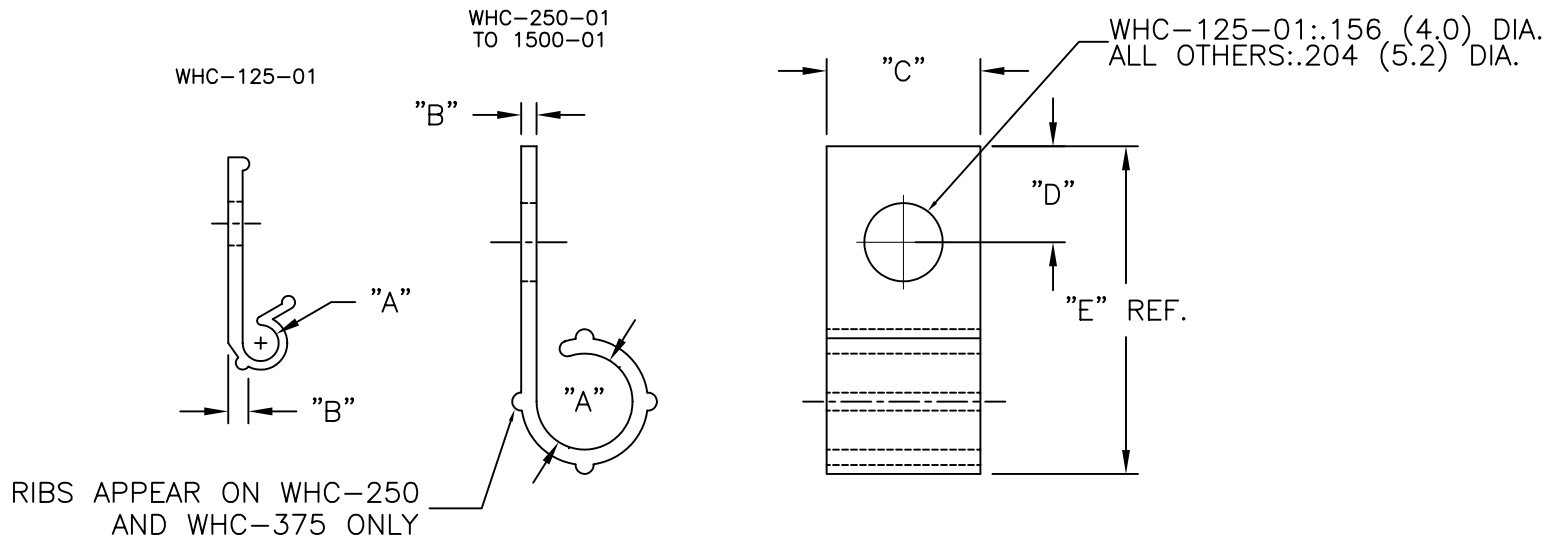


NYLON 6/6 (RMS-01) COLOR: NATURAL PART NO.	FLAME RET. (RMS-19) COLOR: NATURAL PART NO.	"A" (HOLDING DIAMETER)	"B"	"C"	"D"	"E" REF.
WHC-125-01	WHC-125-19	1/8 (3.2)	.05 (1.3)	.33 (8.4)	.23 (5.8)	.75 (19.1)
WHC-250-01	WHC-250-19	1/4 (6.4)	.04 (1.0)	.40 (10.2)	.25 (6.4)	.83 (21.1)
WHC-375-01	WHC-375-19	3/8 (9.5)	.05 (1.3)		.19 (4.8)	
WHC-500-01	WHC-500-19	1/2 (12.7)	.07 (1.8)	.50 (12.7)	.25 (6.4)	1-5/32 (29.4)
WHC-625-01	WHC-625-19	5/8 (15.9)	.08 (2.0)		1-1/8 (28.6)	
WHC-750-01	WHC-750-19	3/4 (19.1)	.08 (2.0)		1-9/32 (32.5)	
WHC-1000-01	WHC-1000-19	1 (25.4)	.09 (2.4)		1-17/32 (38.9)	
WHC-1500-01	WHC-1500-19	1-1/2 (38.1)	.10 (2.5)		2-1/8 (53.9)	



TITLE: WIRE HARNESS CLIP		DWG IN IN (MM)		FINAL				
D	REMOVED NOTES	SM 04.15.02	TOLERANCES UNLESS NOTED .XX=±.010 .XXX=±.005 FRAC=1/64 ANG=1°	FILE # WHC	DWN: P.B.	APP:	PART # SEE TABLE	PRINT TYPE CA
C	ADDED COLUMN ...-19; CHANGED FILE NO. AND TITLE BLOCK	SM 03.26.01		MAT'L: SEE TABLE	DT: 05-02-94	DT:		
B	(RMS-19) (VO) NOTE ADDED	MB 10.11.99		RE: RICHCO, INC.	RICHCO INC. PO BOX 804238, CHICAGO, 60680 (773) 539-4060			
A	FR MAT'L NOTE ADDED	J.L. 1.28.99						
REV	DESCRIPTION	ENGR DATE						