

# B283000N2

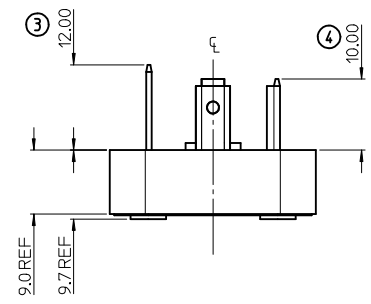
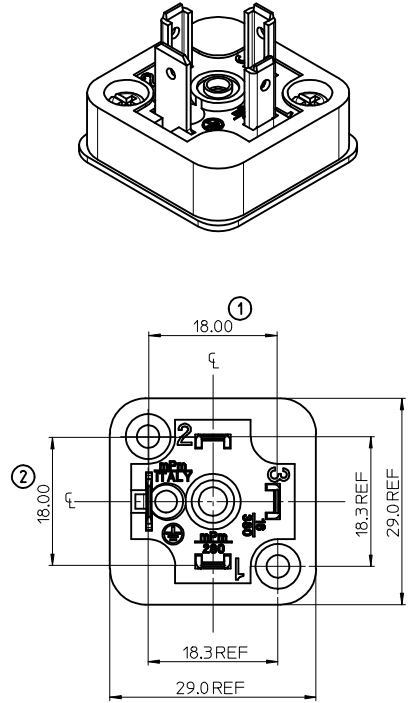
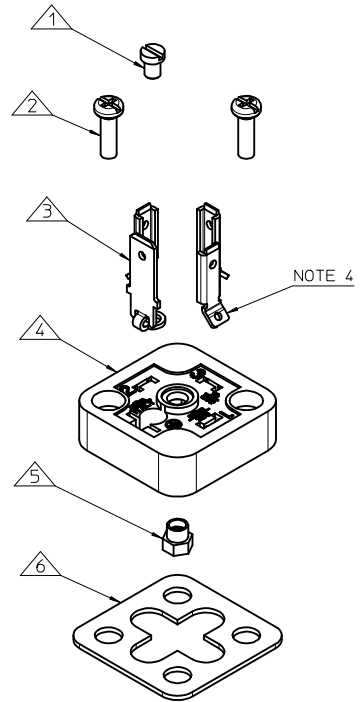
SERIES  
 B28= FORM A  
 POLES  
 2= 2 POLE & 3= 3 POLE  
 CURVED BASE DIAMETER  
 000= FLAT  
 MATERIAL AND HOUSING COLOUR  
 N= PA6 BLACK, W= PA6 BLACK V0, G= PA6 GRAY

SCREW AND GASKET  
 1= NBR PROFILE GASKET & SCREWS  
 2= NBR FLAT GASKET & SCREWS  
 4= SILICON FLAT GASKET & SCREWS  
 6= NBR FLAT GASKET & NO FIXING SCREWS  
 G= SCREWS & NO GASKET

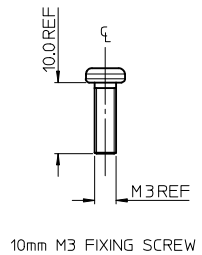
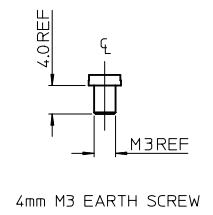
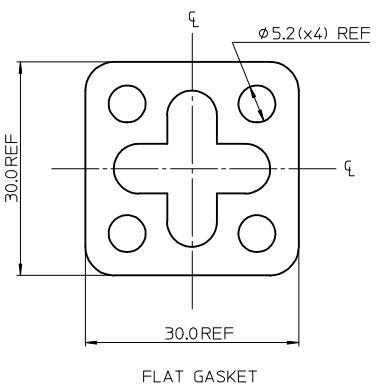
NOTES  
 1. PLEASE SEE TABLE FOR CURRENTLY CONFIGURED PART NUMBERS.  
 FOR SPECIFIC PART NUMBERS PLEASE CONTACT SALES OR CONSULT  
 THE INTELLIGENT PART NUMBERS IN THE TABLE ATTACHED.  
 2. FOR PACKAGING SEE PACKAGING SPEC PK-121012-B28  
 3. PRODUCT SPEC: SEE PS-121201-001  
 4. TERMINALS BENT AFTER INSERTION, SEE TABLE FOR TERMINAL BEND ANGLE

LAST INSPECTION NUMBER 4

PART NO	MPM NO	DESCRIPTION	TERMINAL BEND ANGLE
1210120091	B282000G2	TYPE A 2P GRAY, NBR FLAT GASKET & SCREWS	45
1210120093	B282000N1	TYPE A 2P BLACK, NBR PROFILE GASKET & SCREWS	45
1210120095	B282000N2	TYPE A 2P BLACK, NBR FLAT GASKET & SCREWS	45
1210120096	B282000N4	TYPE A 2P BLACK, SILICON FLAT GASKET & SCREWS	45
1210120097	B282000W2	TYPE A 2P BLACK V0, NBR FLAT GASKET & SCREWS	45
1210120099	B283000N2	TYPE A 3P BLACK, NBR FLAT GASKET & SCREWS	45
1210120100	B283000N4	TYPE A 3P BLACK, SILICON FLAT GASKET & SCREWS	45
1210120101	B283000N6	TYPE A 3P BLACK, NBR FLAT GASKET & NO FIXING SCREWS	45
1210120146	B283000NG	TYPE A 3P BLACK, SCREWS, NO GASKET	45
1210130199	B282000W2SA	TYPE A 2P BLACK, NBR FLAT GASKET & SCREWS, UL LISTED	45
1210130233	B283000W2SA	TYPE A 3P BLACK, NBR FLAT GASKET & SCREWS, UL LISTED	45



ITEM	DESCRIPTION
1	EARTH SCREW
2	FIXING SCREWS
3	TERMINALS
4	HOUSING
5	INSERT
6	GASKET



<b>ADDED PART NUMBERS</b> EC NO: IFC2013-0518 DRAWN: DSHEA 2012/10/11 CHKD: SMCGREVV 2012/10/12 APPR: STIGLEFIN 2012/10/24	QUALITY SYMBOLS ▽=0 ▽=0	GENERAL TOLERANCES (UNLESS SPECIFIED) <table border="1"> <thead> <tr> <th></th> <th>mm</th> <th>INCH</th> </tr> </thead> <tbody> <tr> <td>4 PLACES</td> <td>± 0.10</td> <td>± 0.004</td> </tr> <tr> <td>3 PLACES</td> <td>± 0.15</td> <td>± 0.006</td> </tr> <tr> <td>2 PLACES</td> <td>± 0.20</td> <td>± 0.008</td> </tr> <tr> <td>1 PLACE</td> <td>± 0.25</td> <td>± 0.010</td> </tr> </tbody> </table> ANGULAR ± 0.2°		mm	INCH	4 PLACES	± 0.10	± 0.004	3 PLACES	± 0.15	± 0.006	2 PLACES	± 0.20	± 0.008	1 PLACE	± 0.25	± 0.010	DIMENSION STYLE <b>MM ONLY</b>	SCALE <b>2:1</b>	DESIGN UNITS <b>METRIC</b>	THIRD ANGLE PROJECTION
		mm	INCH																		
	4 PLACES	± 0.10	± 0.004																		
	3 PLACES	± 0.15	± 0.006																		
2 PLACES	± 0.20	± 0.008																			
1 PLACE	± 0.25	± 0.010																			
DRAWN BY DSHEA	DATE 2011/06/10	TITLE <b>B28 SERIES BASES</b>																			
CHECKED BY DMAHER	DATE 2011/06/11																				
APPROVED BY EFOLAN	DATE 2011/06/30																				
MATERIAL NO. <b>SEE TABLE</b>		MOLEX INCORPORATED			DOCUMENT NO. <b>SD-121012-003</b>																
DRAFT WHERE APPLICABLE MUST REMAIN WITHIN DIMENSIONS		THIS DRAWING CONTAINS INFORMATION THAT IS PROPRIETARY TO MOLEX INCORPORATED AND SHOULD NOT BE USED WITHOUT WRITTEN PERMISSION			SHEET NO. 1 OF 1																