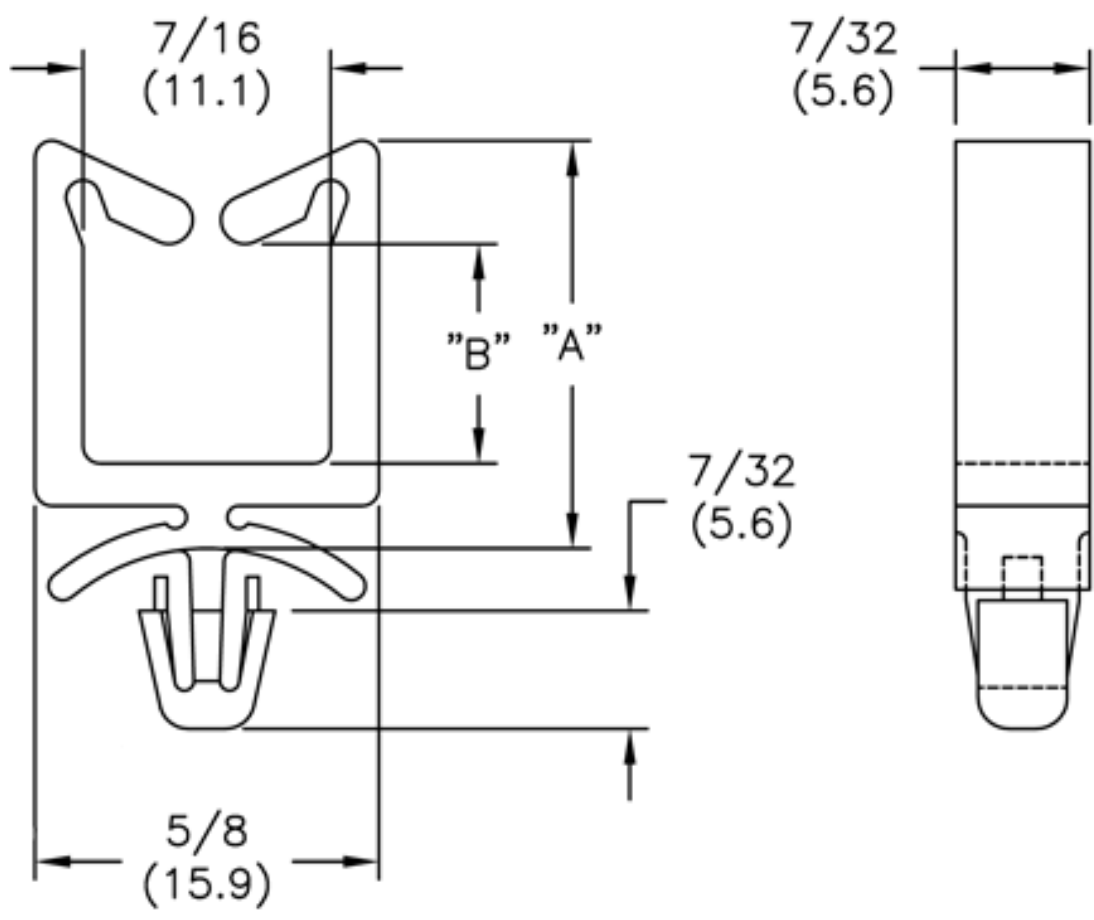

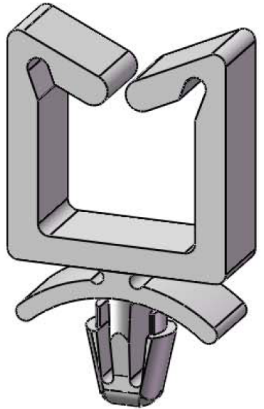
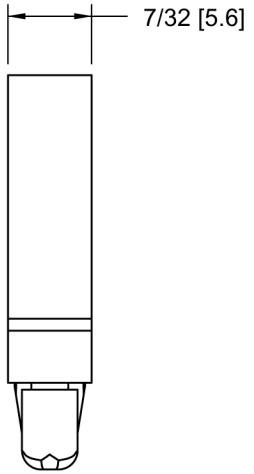
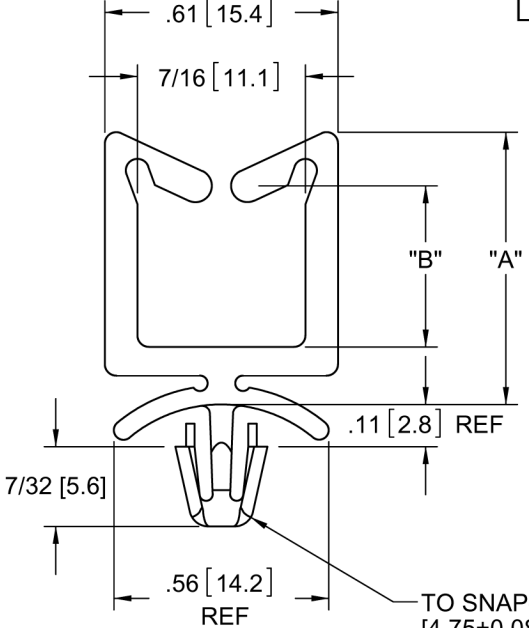


See Part Drawing for Details



Part Number	Description
WS-A-3-01	Wire Sdl,Arrow Mnt,Natural 

PART NO.		DIM. "A" REF	DIM. "B" REF	PANEL THICKNESS
NYLON 6/6 UL 94 V-2 (RMS-01)	NYLON 6/6 UL 94 V-0 (RMS-19)			
WS-A-1-01	WS-A-1-19	.52 [13.2]	.19 [4.8]	1/16 [1.6]
WS-A-2-01	WS-A-2-19	.71 [18]	.38 [9.7]	
WS-A-3-01	WS-A-3-19	1.07 [27.2]	.74 [18.8]	
WS-A-4-01	WS-A-4-19	1.38 [35]	1.05 [26.7]	
WS-A-2-1-01	WS-A-2-1-19	.52 [13.2]	.19 [4.8]	1/8 [3.2]
WS-A-2-2-01	WS-A-2-2-19	.71 [18]	.38 [9.7]	
WS-A-2-3-01	WS-A-2-3-19	1.07 [27.2]	.74 [18.8]	
WS-A-2-4-01	WS-A-2-4-19	1.38 [35]	1.05 [26.7]	



NOTES:
 1. COLOR: NATURAL.
 2. ALTERNATE UNITS FOR REFERENCE ONLY.
 3. MATERIAL: NYLON 6/6 UVB (RMS-46).
 COLOR BLACK. AVAILABLE BY SPECIAL ORDER ONLY.
 TO ORDER REPLACE "-01" WITH "-UVB".

TITLE: WIRE SADDLE W/ ARROWHEAD			DWG IN IN [MM]		
CREATED USING SOLIDWORKS			FILE #: WS-A	DWN: SK	APP: RT
TOLERANCES UNLESS NOTED .XX=±.010 .XXX=±.005 FRAC.=±1/64 ANG.=±1°			SHEET: 1 OF 1	SHEET SIZE: A	DT: 06/13/07
RE: RICHCO, INC.			RICHCO, INC.		PART # SEE TABLE
ENGR. DATE			PRINT TYPE CA		

REV.	DESCRIPTION	ENGR.	DATE
E	SEE CO 200033 FOR CHANGES	SK	09/25/07
D	REDRAWN, SEE ECN #1333 FOR CHANGES	SK	06/13/07
-	SEE ENGINEERING FOR REV A-C	--	-----