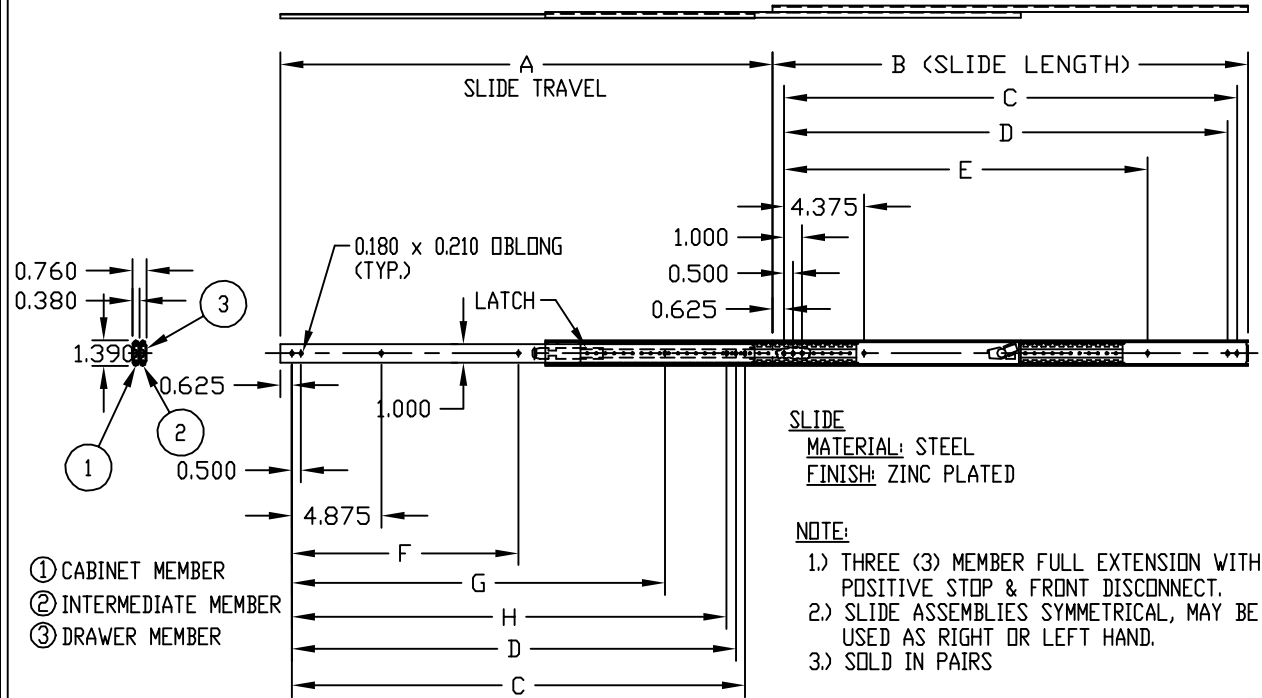


SLIDE
MATERIAL: STEEL
FINISH: ZINC PLATED

- NOTE:**
- 1.) TWO (2) MEMBER 3/4 EXTENSION WITH POSITIVE STOP & FRONT DISCONNECT.
 - 2.) SLIDE ASSEMBLIES SYMMETRICAL, MAY BE USED AS RIGHT OR LEFT HAND.
 - 3.) SOLD IN PAIRS.

PART No.	A	B	C	D	E	F	G	H	J	K	LOAD RATING PER PAIR	WEIGHT PER PAIR
AS-5000-A	8.000	12.000	10.750	10.250	5.875	-----	-----	8.500	10.000	11.840	140 LBS.	1.3 LBS.
AS-5001-A	12.000	16.000	14.750	14.250	9.875	-----	-----	12.500	14.000	15.840	120 LBS.	1.7 LBS.
AS-5002-A	15.000	20.000	18.750	18.250	13.875	9.375	9.000	15.500	18.000	19.840	92 LBS.	2.3 LBS.
AS-5004-A	19.000	26.000	24.750	24.250	19.875	12.375	12.000	19.500	24.000	25.840	70 LBS.	2.9 LBS.



- ① CABINET MEMBER
- ② INTERMEDIATE MEMBER
- ③ DRAWER MEMBER

SLIDE
MATERIAL: STEEL
FINISH: ZINC PLATED

- NOTE:**
- 1.) THREE (3) MEMBER FULL EXTENSION WITH POSITIVE STOP & FRONT DISCONNECT.
 - 2.) SLIDE ASSEMBLIES SYMMETRICAL, MAY BE USED AS RIGHT OR LEFT HAND.
 - 3.) SOLD IN PAIRS

PART No.	A	B	C	D	E	F	G	H	LOAD RATING/PR.	WEIGHT/PR.
AS-5042-A	20.880	20.000	18.750	18.250	13.875	9.375	14.375	17.750	91 LBS.	4.2 LBS.