



Series 152, 156 & 157 In-Line Jumpers on .100 [2.54] Centers

FEATURES:

- End connectors have Gold plated, solid Brass pins on .100 [2.54] centers.
- Available single-ended (Series 156), double-ended (Series 157), or bare-ended (Series 152).
- Reliable, electronically tested solder connections.
- 10-color cable allows for easy identification and tracing.

SPECIFICATIONS:

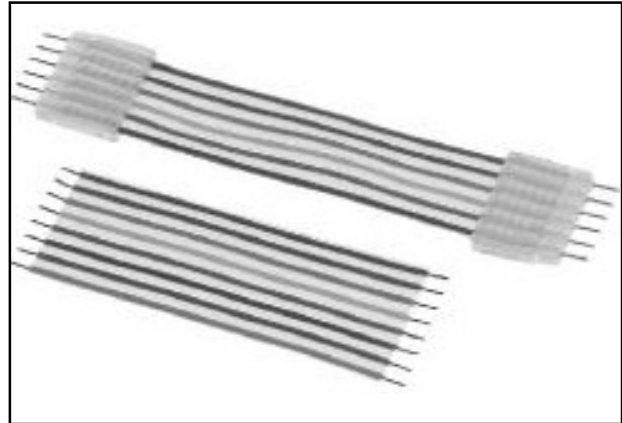
- Housing is natural UL 94-HB Nylon 6/6.
- Header pins are Brass, 1/2 hard.
- Pin plating is 10µ [.25µm] min. Gold per MIL-G-45204 over 50µ [1.27µm] min. Nickel per QQ-N-290.
- Cable insulation is UL Style 1061 Polyvinyl Chloride (PVC), semi-rigid.
- Laminate is clear PVC, self-extinguishing.
- Conductors are 26 AWG, 7/34 strand, Tinned Copper per ASTM B 33. Series 152 conductors are not pre-tinned. Consult factory for pre-tinned, bare-ended jumpers.
- Cable current rating=1 Amp @ 10°C [50°F] above ambient.
- Cable voltage rating=300 Volts.
- Cable temperature rating=176°F [80°C].

MOUNTING CONSIDERATIONS:

- Suggested PCB hole size=.033 ± .002 [.86 ± .05].

ALL DIMENSIONS: INCHES [MILLIMETERS]

All tolerances ± .005 [.13] unless otherwise specified



Note: Aries specializes in custom design and production. In addition to the standard products shown on this page, special materials, platings, sizes, and configurations can be furnished, depending on quantities. Aries reserves the right to change product specifications without notice.

ORDERING INFORMATION

XX-XXX-XXX

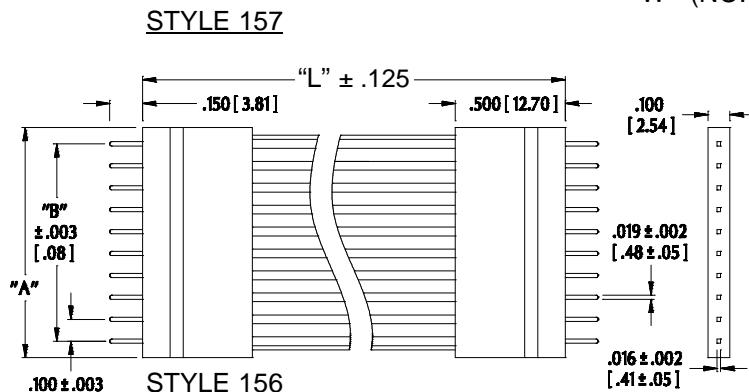
No. of conductors (4 thru 22) | Length "L" in inches (see table) | Series:
156=single-ended
157=double-ended
152=bare-ended

"A"=(NO. OF CONDUCTORS X .100 [2.54]) + .040 [1.02]

"B"=(NO. OF CONDUCTORS - 1) X .100 [2.54]

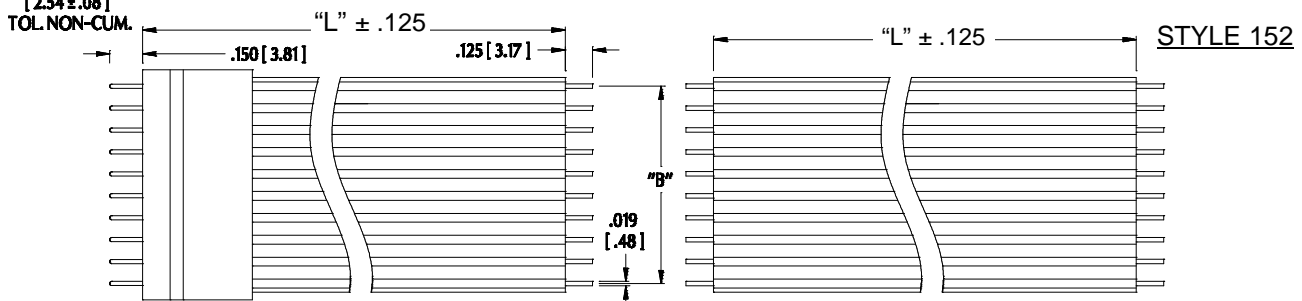
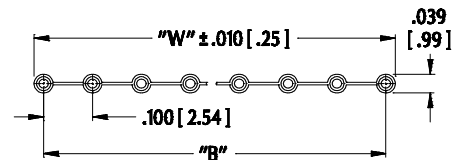
"W"=(NO. OF CONDUCTORS X .100 [2.54]) - .020 [.51]

Consult factory for sizes not shown



No. of Conductors	Minimum Insulation Length
4 thru 8	1.000 [25.40]
9 and 10	1.250 [31.75]
11 thru 22	1.500 [38.10]

CABLE DETAIL



ARIES
ELECTRONICS, INC.
<http://www.arieselec.com> • info@arieselec.com

NORTH AMERICA
Frenchtown, NJ USA
TEL: (908) 996-6841
FAX: (908) 996-3891



EUROPE
TEL: +44 870 240 0249
FAX: +44 871 919 6033
europe@arieselec.com

11014
REV.H