

6

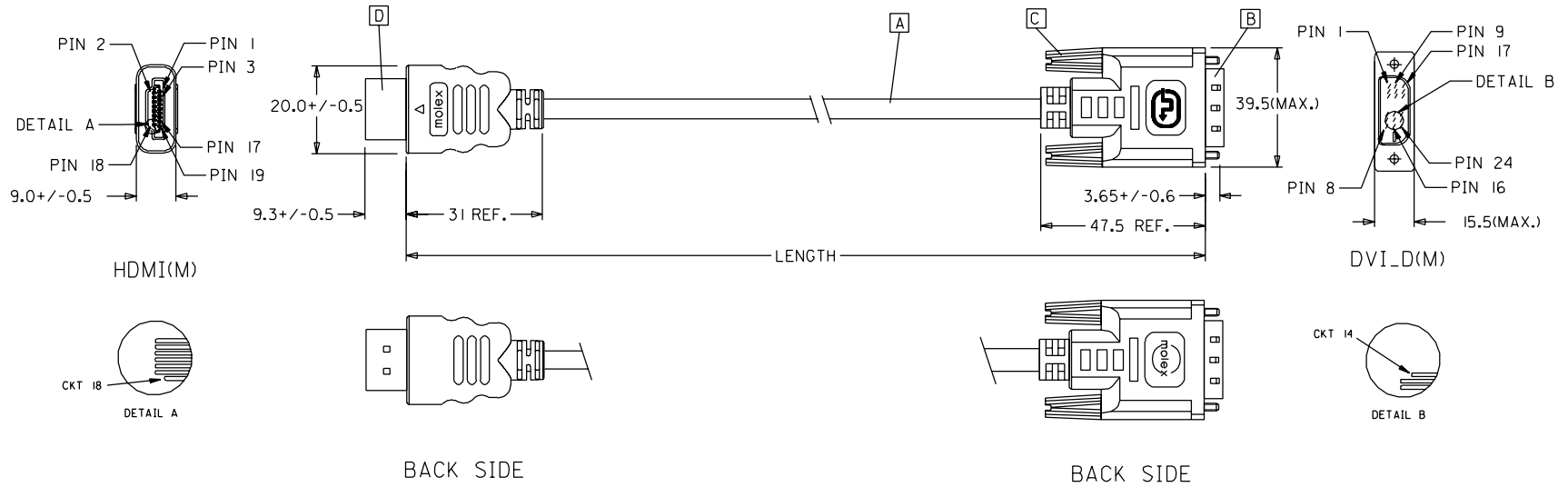
5

4

3

2

1



88768-3620	HDMI TO DVI-D(M) CABLE ASS'Y,3M	3000+/-80	BLACK	5,5MM(TMDS - AWG*30)
88768-3610	HDMI TO DVI-D(M) CABLE ASS'Y,2M	2000+/-60	BLACK	5,5MM(TMDS - AWG*30)
88768-3600	HDMI TO DVI-D(M) CABLE ASS'Y,1M	1000+/-30	BLACK	5,5MM(TMDS - AWG*30)
88768-3530	HDMI TO DVI-D(M) CABLE ASS'Y,5M	5000+/-100	BLACK	7,3MM(TMDS - AWG*28)
88768-3520	HDMI TO DVI-D(M) CABLE ASS'Y,3M	3000+/-80	BLACK	7,3MM(TMDS - AWG*28)
88768-3510	HDMI TO DVI-D(M) CABLE ASS'Y,2M	2000+/-60	BLACK	7,3MM(TMDS - AWG*28)
88768-3500	HDMI TO DVI-D(M) CABLE ASS'Y,1M	1000+/-30	BLACK	7,3MM(TMDS - AWG*28)
MX P/N	DESCRIPTION	LENGTH	CABLE COLOR	CABLE OD

EC NO. DRWN: CHK: APPR:	DESCRIPTION	QUALITY SYMBOLS	GENERAL TOLERANCES: (UNLESS SPECIFIED)		SCALE N.S.T	DESIGN UNITS <input checked="" type="checkbox"/> mm <input type="checkbox"/> INCH	THIRD ANGLE PROJECTION	<input type="checkbox"/> mm INCH	<input type="checkbox"/> mm mm	<input checked="" type="checkbox"/> mm ONLY	SHT	REV
		MAJOR ▼ = 0	4 PLACES	±0.	±.	DRAWN BY & DATE Louis Chen 03/11/17		TITLE: HDMI(M) TO DVI-D(M) CABLE ASS'Y				
		CRITICAL ▽ = 0	3 PLACES	±0.	±.	CHECKED BY & DATE Teddy Kan 03/11/17		<b>MOLEX INCORPORATED</b>				
			2 PLACES	±0.	±.	APPROVED BY & DATE Baron Chen 03/11/17						
C	REV		ANGULAR: ± °		CAD FILENAME S88768AA.SOI		THIS DRAWING CONTAINS INFORMATION THAT IS PROPRIETARY TO MOLEX INCORPORATED AND SHOULD NOT BE USED WITHOUT WRITTEN PERMISSION.		SIZE A4			

6

5

4

3

2

1

NOTE: 1. OVERMOLD SPECIFICATION

1.1 DVI BOOT MOLDED WITH SNOW WHITE PVC RESIN P/N.

1.1.1 UL94V-0

1.1.2 HARDNESS (DUROMETER): SHORE A 90-95

1.2 HDMI OUTER MOLD WITH BLACK PVC RESIN. UL94V-0.

2. MECHANICAL SPECIFICATION

2.1 CABLE SHOULD STAND THE PULL FORCE 89-11IN FOR 30 SECONDS WITH NO VISIBLE TERMINATION DAMAGE.

2.2 CABLE SHOULD PASS THE FLEX TEST IN 100 CYCLES AT EACH OF PLANES, PER EIA 364-41, CONDITION 1.

3. CABLE ELECTRICAL SPECIFICATION

3.1 DIELECTRIC STRENGTH: 300V AC FOR 10MS.

3.2 INSULATION RESISTANCE: 10 MEGA Ohms MIN.

3.3 DIFFERENTIAL LINES CHARACTERISTIC IMPEDANCE: 100+/-10 Ohms @TDR.

3.4 CONTACT RESISTANCE: 2 OHMS(MAX.).

3.5 SIGNALS CROSSTALK(FEXT): 5% (MAX.) PER ANSI/EIA-364-90.




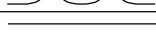



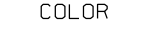
3.6 SIGNALS INTRA-PAIR SKEW : <150 ps.

4. DVI CONNECTOR SPECIFICATION

4.1 REFER TO PRODUCT SPEC. PS74320-0001.

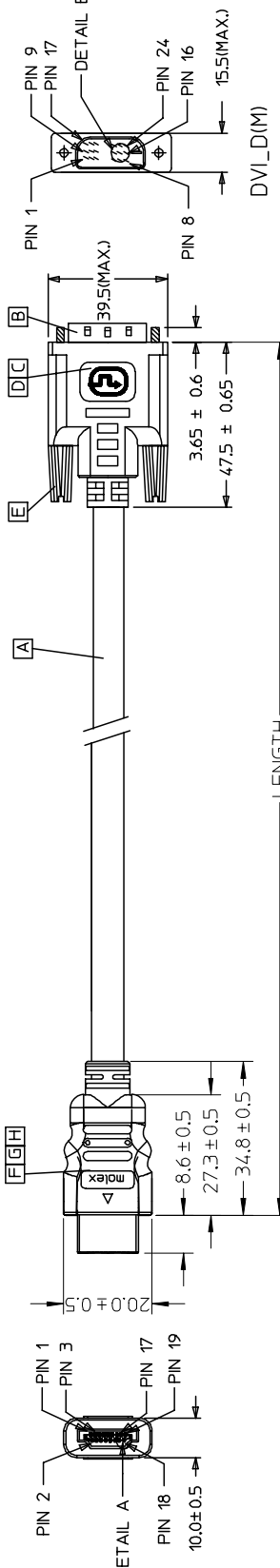
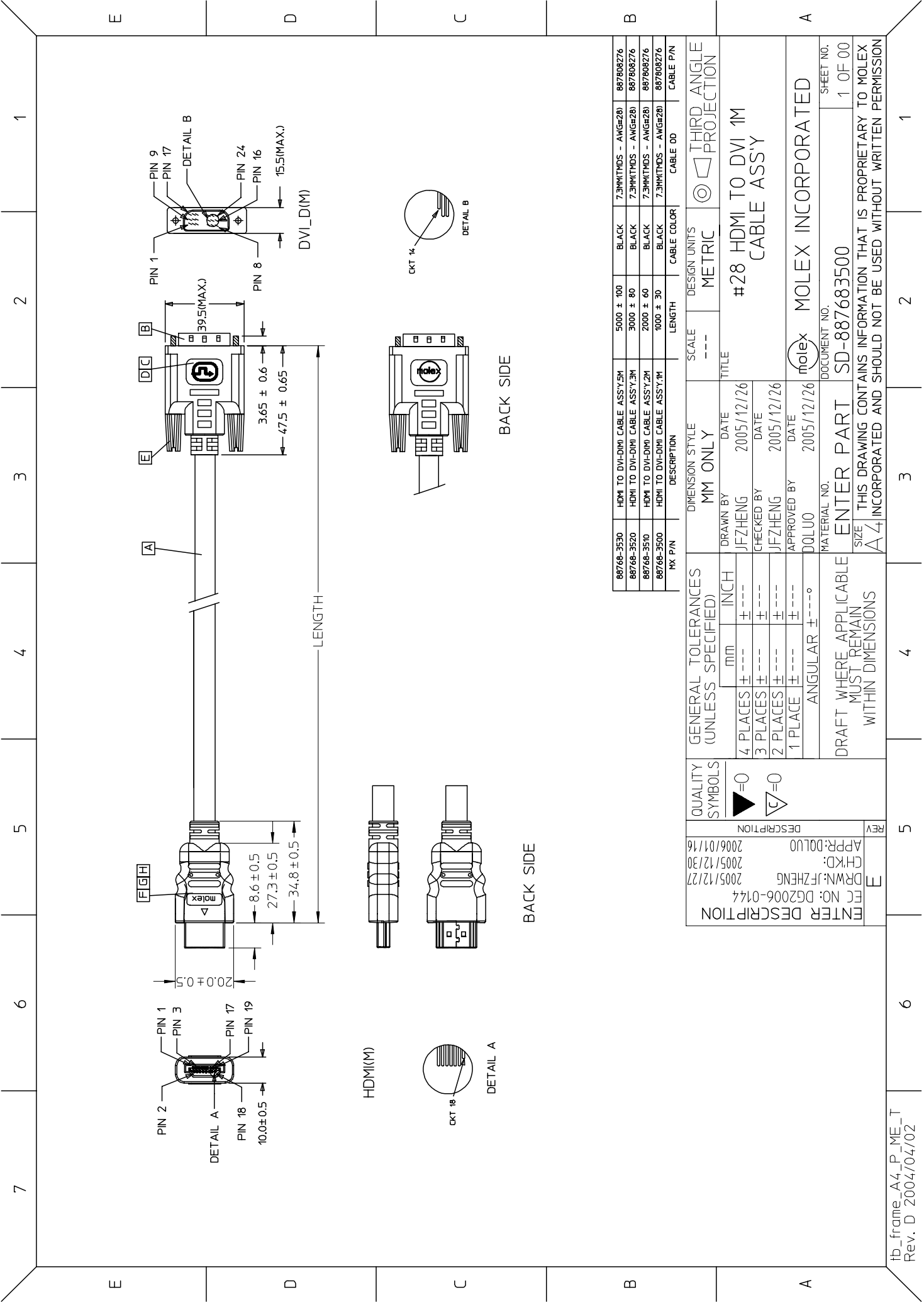
4.2 CONTACT PLATING: AU FLASH.

5. MATERIAL MUST MEET MANAGEMENT REGULATIONS FOR ENVIRONMENT (MX TS-0002).

SHIELD	SHIELD		GROUND
PIN 19	PIN 16	=====	HOT PLUG DETECT
PIN 18	PIN 14	=====	POWER +5V
PIN 17	PIN 15	=====	GROUND(+5V&DDC)
PIN 16	PIN 7	=====	DDC DATA(SDA)
PIN 15	PIN 6	=====	DDC CLOCK(SCL)
PIN 11	PIN 22	=====	TMDS CLOCK SHIELD
PIN 12	PIN 24		TMDS CLOCK-
PIN 10	PIN 23		TMDS CLOCK+
PIN 8	PIN 19	=====	TMDS DATA 0 SHIELD
PIN 9	PIN 17		TMDS DATA 0-
PIN 7	PIN 18		TMDS DATA 0+
PIN 5	PIN 11	=====	TMDS DATA 1 SHIELD
PIN 6	PIN 9		TMDS DATA 1-
PIN 4	PIN 10		TMDS DATA 1+
PIN 2	PIN 3	=====	TMDS DATA 2 SHIELD
PIN 3	PIN 1		TMDS DATA 2-
PIN 1	PIN 2		TMDS DATA 2+
HDMI	DVI-D	COLOR	CABLE FUNCTION

ITEM	DESCRIPTION	QTY.
D	HDMI PLUG ASSY'	1
C	DVI THUMB SCREW	2
B	DVI_D SINGLE CHANNEL G/F CONNECTOR	1
A	DVI SINGLE LINK CABLE (SEE TABLE)	1

EC NO. C DRWN: C CHK: C APPR: C	DESCRIPTION MAJOR CRITICAL	QUALITY SYMBOLS MAJOR = 0 CRITICAL = 5	GENERAL TOLERANCES: (UNLESS SPECIFIED) mm    INCH	SCALE N.S.T	DESIGN UNITS <input checked="" type="checkbox"/> mm <input type="checkbox"/> INCH	<input type="checkbox"/> THIRD ANGLE <input type="checkbox"/> PROJECTION	<input type="checkbox"/> mm <input type="checkbox"/> INCH <input type="checkbox"/> mm <input checked="" type="checkbox"/> ONLY	SHT REV	REVISE ON CAD ONLY	
		4 PLACES ±0.    ±. 3 PLACES ±0.    ±. 2 PLACES ±0.    ±. 1 PLACE ±0.    ±.	DRAWN BY & DATE Louis Chen 03/11/17	TITLE: HDMI(M) TO DVI-D(M) CABLE ASS'Y		MOLEX INCORPORATED				SHEET NO. 2 OF 2
		ANGULAR: ±    °	CHECKED BY & DATE Teddy Kan 03/11/17	CAD FILENAME S88768AA.S02	MATERIAL NO. SEE TABLE	DRAWING NO. SD-88768-001	THIS DRAWING CONTAINS INFORMATION THAT IS PROPRIETARY TO MOLEX INCORPORATED AND SHOULD NOT BE USED WITHOUT WRITTEN PERMISSION.			
		APPROVED BY & DATE Boron Chen 03/11/17	SIZE A4							



PKT. P/N	DESCRIPTION	LENGTH	CABLE COLOR	CABLE P/N
88768-3530	HDMI TO DVI-D(M) CABLE ASSY.5M	5000 ± 100	BLACK	7.3MM(TMDS - AWGR28) 887808276
88768-3520	HDMI TO DVI-D(M) CABLE ASSY.3M	3000 ± 80	BLACK	7.3MM(TMDS - AWGR28) 887808276
88768-3510	HDMI TO DVI-D(M) CABLE ASSY.2M	2000 ± 60	BLACK	7.3MM(TMDS - AWGR28) 887808276
88768-3500	HDMI TO DVI-D(M) CABLE ASSY.1M	1000 ± 30	BLACK	7.3MM(TMDS - AWGR28) 887808276

GENERAL TOLERANCES (UNLESS SPECIFIED)	QUALITY SYMBOLS	DESIGN STYLE	SCALE	DESIGN UNITS
4 PLACES ± --- INCH	▷=0	MM ONLY	---	METRIC
3 PLACES ± ---	▽=0	DRAWN BY JFZHENG	DATE 2005/12/26	TITLE #28 HDMI TO DVI 1M CABLE ASSY
2 PLACES ± ---		CHECKED BY JFZHENG	DATE 2005/12/26	
1 PLACE ± ---		APPROVED BY DQLUO	DATE 2005/12/26	
ANGULAR ± ---°		MATERIAL NO. ENTER PART SD-887683500	DOCUMENT NO.	SHEET NO. 1 OF 00
DRAFT WHERE APPLICABLE MUST REMAIN WITHIN DIMENSIONS				

DRAFT WHERE APPLICABLE MUST REMAIN WITHIN DIMENSIONS  
 THIS DRAWING CONTAINS INFORMATION THAT IS PROPRIETARY TO MOLEX INCORPORATED AND SHOULD NOT BE USED WITHOUT WRITTEN PERMISSION  
 MOLEX MOLEX INCORPORATED  
 #28 HDMI TO DVI 1M CABLE ASSY  
 THIRD ANGLE PROJECTION  
 HD\_frame\_A4\_P\_ME\_T Rev. D 2004/04/02

**NOTE:**

1. OVERMOLD SPECIFICATION:
  - 1.1 DVI BOOT MOLDED SNOW WHITE PVC RESIN 887800076,UL94V-0.
  - 1.2 HDMI INNERMOLD WITH BK PVC 887800019.
  - 1.3 HDMI OVERMOLD WITH PVC 887800150
2. MECHANICAL SPECIFICATION
  - 2.1 CABLE SHOULD STAND THE PULL FORCE 89-111N FOR 30 SECONDS WITH NO VISIBLE TERMINATION DAMAGE.
  - 2.2 CABLE SHOULD PASS THE FLEX TEST IN 100 CYCLES AT EACH OF PLANES, PER EIA 364-41, CONDITION 1.
3. PRODUCT ELECTRICAL SPECIFICATION:
  - 3.1 DIELECTRIC STRENGTH.
  - 3.2 INSULATION RESISTANCE.
  - 3.3 CONDUCTIVE RESISTANCE.
  - 3.4 TMS Signals Time Domain Impedence
  - 3.5 TMS Signals Time Domain Crosstalk:FEXT
  - 3.6 TMS Signals Skew
  - 3.7 Attenuation

SHIELD	SHIELD	OVERALL SHIELD	GROUND
PIN 19	PIN 16	WHITE	HOT PLUG DETECT
PIN 18	PIN 14	YELLOW	POWER +5V
PIN 17	PIN 15	ORANGE	GROUND(+5V&DDC)
PIN 16	PIN 7	RED	DDC DATA(SDA)
PIN 15	PIN 6	VIOLET	DDC CLOCK(SCL)
PIN 12	PIN 24	WHITE	TMS CLOCK-
PIN 11	PIN 22	BRAID	TMS CLOCK SHIELD
PIN 10	PIN 23	BROWN	TMS CLOCK+
PIN 9	PIN 17	WHITE	TMS DATA 0-
PIN 8	PIN 19	BRAID	TMS DATA 0 SHIELD
PIN 7	PIN 18	BLUE	TMS DATA 0+
PIN 6	PIN 9	WHITE	TMS DATA 1-
PIN 5	PIN 11	BRAID	TMS DATA 1 SHIELD
PIN 4	PIN 10	GREEN	TMS DATA 1+
PIN 3	PIN 1	WHITE	TMS DATA 2-
PIN 2	PIN 3	BRAID	TMS DATA 2 SHIELD
PIN 1	PIN 2	RED	TMS DATA 2+
HDMI	DVI-D	COLOR	CABLE FUNCTION

- REFER TO ES-002 ELECTRICAL SPECIFICATION FOR DETAILS.
- 4.CABLE CONSTRUCTION/CABLE (AWG#28\*1P+D)\*4 + AWG#28\*1P + AWG#28\*3C, 7.3MMOD
  5. DVI CONNECTOR SPECIFICATION(DVI)
    - 5.1 REFER TO PRODUCT SPEC. PS74320-001
    - 5.2 CONTACT PLATING: AU FLASH.
  6. THIS PRODUCT MUST MEET ROHS COMPLIANCE.

ITEM	DESCRIPTION	SCALE	DESIGN UNITS	METRIC	THIRD ANGLE PROJECTION	QTY.
H	HDMI METAL PLATED	47152-6009	---	METRIC		1
G	HDMI METAL CAN	47152-4001	---	METRIC		1
F	HDMI HOUSING ASSY.	47152-1100	---	METRIC		1
E	DVI THUMB SCREW	887806077	---	METRIC		2
D	PCB	887899569/887899570	---	METRIC		1
C	ONE BODY CAN	887899392	---	METRIC		1
B	DVLD SINGLE CHANNEL G/F CONNECTOR	743230001	---	METRIC		1
A	DVI SINGLE LINK CABLE (SEE TABLE)		---	METRIC		1

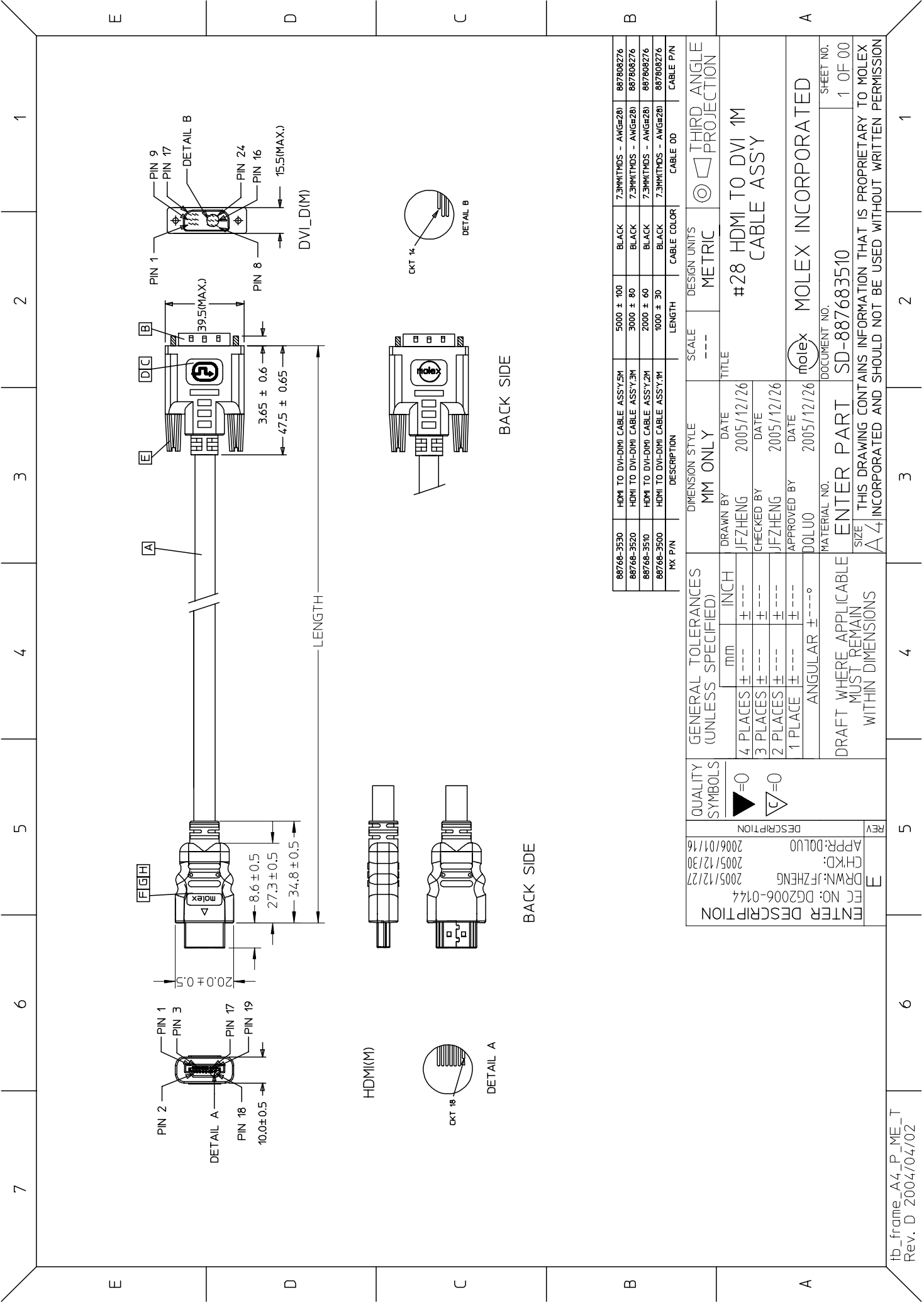
GENERAL TOLERANCES (UNLESS SPECIFIED)	mm	INCH
4 PLACES	± ---	± ---
3 PLACES	± ---	± ---
2 PLACES	± ---	± ---
1 PLACE	± ---	± ---
ANGULAR ± ---°		

DRAFT WHERE APPLICABLE MUST REMAIN WITHIN DIMENSIONS

DIMENSION STYLE	MM ONLY	DATE	TITLE
DRAWN BY	JFZHENG	2005/12/26	#28 HDMI TO DVI 1M CABLE ASSY
CHECKED BY	JFZHENG	2005/12/26	
APPROVED BY	DQLUO	2005/12/26	
MATERIAL NO.	887683500		
DOCUMENT NO.	SD-887683500		
SHEET NO.			2 OF 2

MOLEX INCORPORATED

THIS DRAWING CONTAINS INFORMATION THAT IS PROPRIETARY TO MOLEX INCORPORATED AND SHOULD NOT BE USED WITHOUT WRITTEN PERMISSION



MOLEX P/N	DESCRIPTION	LENGTH	CABLE COLOR	CABLE P/N
88768-3530	HDMI TO DVI-DMI CABLE ASSY.5M	5000 ± 100	BLACK	7.3MM(TMDS - AWGR28) 887808276
88768-3520	HDMI TO DVI-DMI CABLE ASSY.3M	3000 ± 80	BLACK	7.3MM(TMDS - AWGR28) 887808276
88768-3510	HDMI TO DVI-DMI CABLE ASSY.2M	2000 ± 60	BLACK	7.3MM(TMDS - AWGR28) 887808276
88768-3500	HDMI TO DVI-DMI CABLE ASSY.1M	1000 ± 30	BLACK	7.3MM(TMDS - AWGR28) 887808276

GENERAL TOLERANCES (UNLESS SPECIFIED)	DIMENSION STYLE	SCALE	DESIGN UNITS
4 PLACES ± --- INCH	MM ONLY	---	METRIC
3 PLACES ± ---	DRAWN BY		
2 PLACES ± ---	DATE		
1 PLACE ± ---	CHECKED BY		
ANGULAR ± --- °	DATE		
	APPROVED BY		
	DQLUO		
	MATERIAL NO.		
	ENTER PART		
	SD-887683510		
	DOCUMENT NO.		

QUALITY SYMBOLS	DATE	TITLE
▶=0	2005/12/27	#28 HDMI TO DVI 1M CABLE ASSY
◁=0	2005/12/30	
	2006/01/16	

REV	DESCRIPTION	DATE	BY	APP'D
1	ENTER DESCRIPTION	2005/12/27	DRWN: JFZHENG	
2		2005/12/30	CHKD:	
3		2006/01/16	APPR: DQLUO	

MOLEX	DOCUMENT NO.	SHEET NO.
	SD-887683510	1 OF 00

THIS DRAWING CONTAINS INFORMATION THAT IS PROPRIETARY TO MOLEX AND SHOULD NOT BE USED WITHOUT WRITTEN PERMISSION FROM MOLEX INCORPORATED.

**NOTE:**

- 1. OVERMOLD SPECIFICATION:
  - 1.1 DVI BOOT MOLDED SNOW WHITE PVC RESIN 887800076,UL94V-0.
  - 1.2 HDMI INNERMOLD WITH BK PVC 887800019.
  - HDMI OVERMOLD WITH PVC 887800150
  - 1.3 HDMI DUST COVER WITH PE 887800008

- 2. MECHANICAL SPECIFICATION
  - 2.1 CABLE SHOULD STAND THE PULL FORCE 89-111N FOR 30 SECONDS WITH NO VISIBLE TERMINATION DAMAGE.
  - 2.2 CABLE SHOULD PASS THE FLEX TEST IN 100 CYCLES AT EACH OF PLANES, PER EIA 364-41, CONDITION 1.

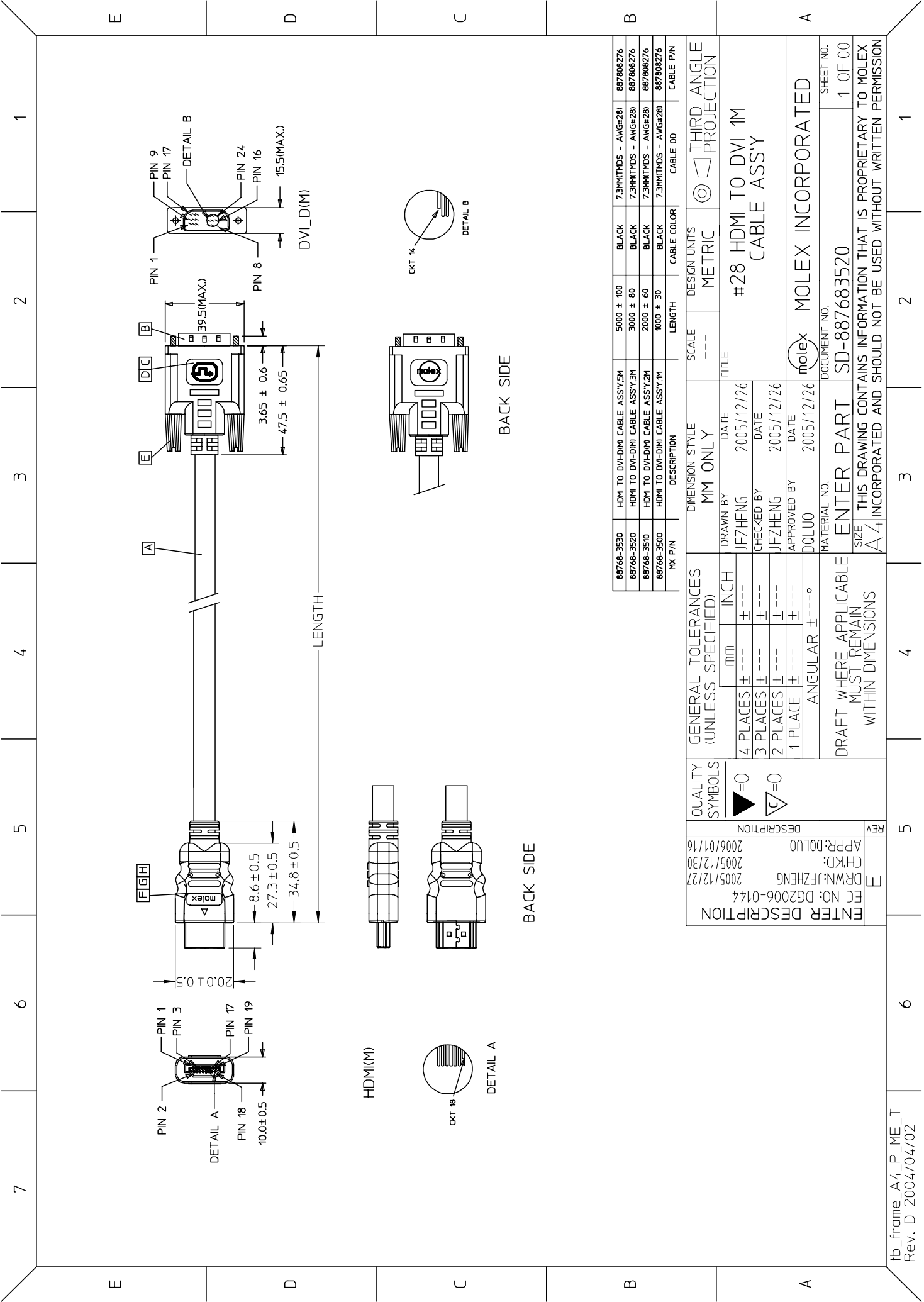
- 3. PRODUCT ELECTRICAL SPECIFICATION:
  - 3.1 DIELECTRIC STRENGTH.
  - 3.2 INSULATION RESISTANCE.
  - 3.3 CONDUCTIVE RESISTANCE.
  - 3.4 TMS Signals Time Domain Impedence
  - 3.5 TMS Signals Time Domain Crosstalk:FEXT
  - 3.6 TMS Signals Skew
  - 3.7 Attenuation

- REFER TO ES-002 ELECTRICAL SPECIFICATION FOR DETAILS.
- 4.CABLE CONSTRUCTION/CABLE (AWG#28\*1P+D)\*4 + AWG#28\*1P + AWG#28\*3C, 7.3MMOD
- 5. DVI CONNECTOR SPECIFICATION(DVI)
  - 5.1 REFER TO PRODUCT SPEC. PS74320-001
  - 5.2 CONTACT PLATING: AU FLASH.
- 6. THIS PRODUCT MUST MEET ROHS COMPLIANCE.

SHIELD	SHIELD	OVERALL SHIELD	GROUND
PIN 19	PIN 16	WHITE	HOT PLUG DETECT
PIN 18	PIN 14	YELLOW	POWER +5V
PIN 17	PIN 15	ORANGE	GROUND(+5V&DDC)
PIN 16	PIN 7	RED	DDC DATA(SDA)
PIN 15	PIN 6	VIOLET	DDC CLOCK(SCL)
PIN 12	PIN 24	WHITE	TMS CLOCK-
PIN 11	PIN 22	BRAID	TMS CLOCK SHIELD
PIN 10	PIN 23	BROWN	TMS CLOCK+
PIN 9	PIN 17	WHITE	TMS DATA 0-
PIN 8	PIN 19	BRAID	TMS DATA 0 SHIELD
PIN 7	PIN 18	BLUE	TMS DATA 0+
PIN 6	PIN 9	WHITE	TMS DATA 1-
PIN 5	PIN 11	BRAID	TMS DATA 1 SHIELD
PIN 4	PIN 10	GREEN	TMS DATA 1+
PIN 3	PIN 1	WHITE	TMS DATA 2-
PIN 2	PIN 3	BRAID	TMS DATA 2 SHIELD
PIN 1	PIN 2	RED	TMS DATA 2+
HDMI	DVI-D	COLOR	CABLE FUNCTION

ITEM	DESCRIPTION	SCALE	DESIGN UNITS	METRIC	THIRD ANGLE PROJECTION	QTY.
H	HDMI METAL PLATED	47152-6009	---	METRIC		1
G	HDMI METAL CAN	47152-4001	---	METRIC		1
F	HDMI HOUSING ASSY.	47152-1100	---	METRIC		1
E	DVI THUMB SCREW	887806077	---	METRIC		2
D	PCB	887899569/887899570	---	METRIC		1
C	ONE BODY CAN	887899392	---	METRIC		1
B	DVI-D SINGLE CHANNEL G/F CONNECTOR	743230001	---	METRIC		1
A	DVI SINGLE LINK CABLE (SEE TABLE)		---	METRIC		1

GENERAL TOLERANCES (UNLESS SPECIFIED)	DIMENSION STYLE	SCALE	DESIGN UNITS	METRIC	THIRD ANGLE PROJECTION
mm	MM ONLY	---	---	METRIC	
INCH	DATE	---	---	METRIC	
4 PLACES ±----	JFZHENG	2005/12/26	---	METRIC	
3 PLACES ±----	CHECKED BY	DATE	---	METRIC	
2 PLACES ±----	JFZHENG	2005/12/26	---	METRIC	
1 PLACE ±----	APPROVED BY	DATE	---	METRIC	
ANGULAR ±---°	DQLUO	2005/12/26	---	METRIC	
DRAFT WHERE APPLICABLE MUST REMAIN WITHIN DIMENSIONS		MATERIAL NO.		DOCUMENT NO.	
		DQLUO		SD-887683510	
				SHEET NO. 2 OF 2	
SIZE THIS DRAWING CONTAINS INFORMATION THAT IS PROPRIETARY TO MOLEX INCORPORATED AND SHOULD NOT BE USED WITHOUT WRITTEN PERMISSION					

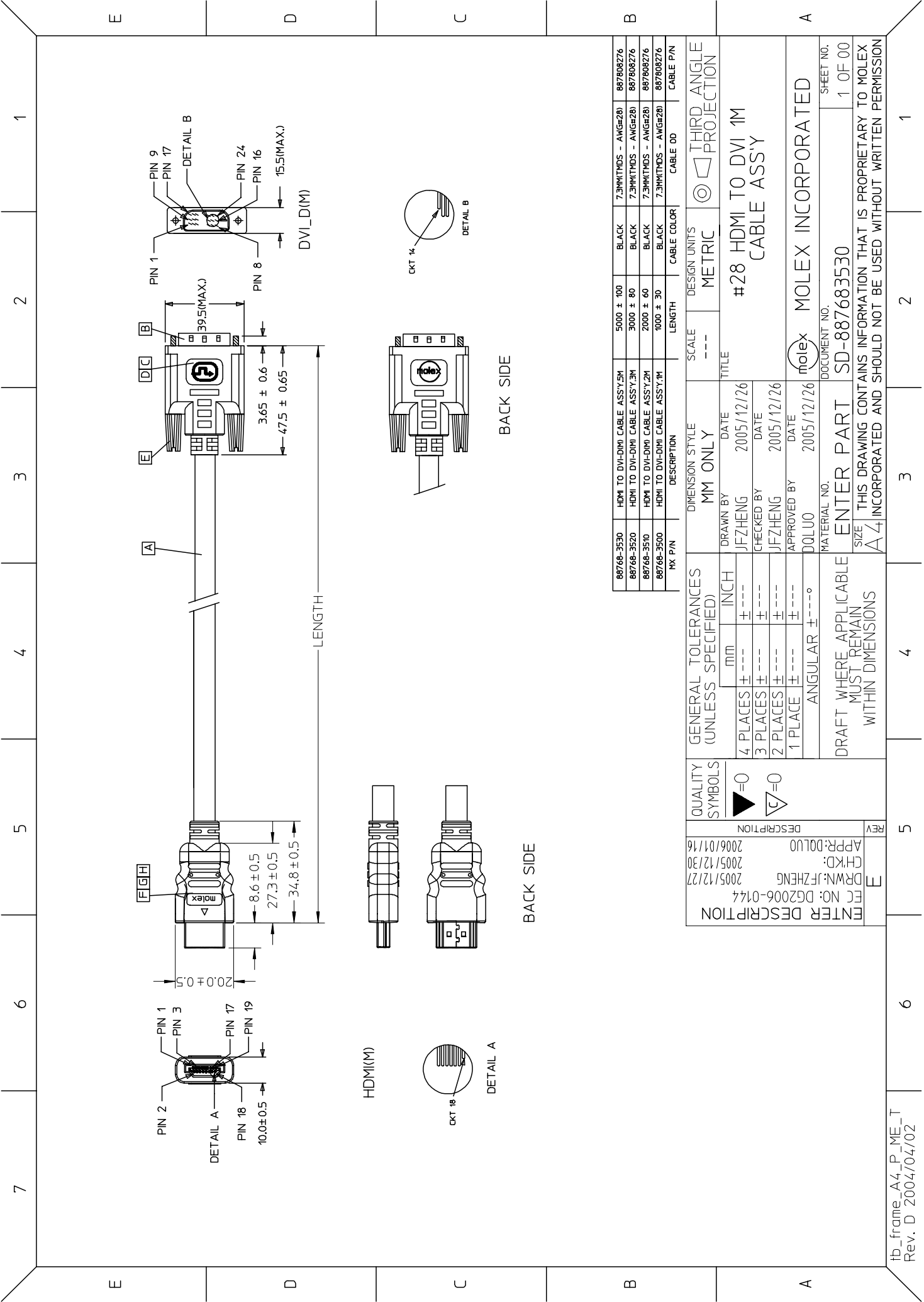


88768-3530	HDMI TO DVI-D(M) CABLE ASSY.5M	5000 ± 100	BLACK	7.3MM(TMDS - AWGR28)	887808276
88768-3520	HDMI TO DVI-D(M) CABLE ASSY.3M	3000 ± 80	BLACK	7.3MM(TMDS - AWGR28)	887808276
88768-3510	HDMI TO DVI-D(M) CABLE ASSY.2M	2000 ± 60	BLACK	7.3MM(TMDS - AWGR28)	887808276
88768-3500	HDMI TO DVI-D(M) CABLE ASSY.1M	1000 ± 30	BLACK	7.3MM(TMDS - AWGR28)	887808276
PKY P/N	DESCRIPTION	LENGTH	CABLE COLOR	CABLE P/N	CABLE P/N

GENERAL TOLERANCES (UNLESS SPECIFIED)		DIMENSION STYLE		SCALE		DESIGN UNITS	
		MM ONLY		---		METRIC	
4 PLACES ±	mm	DRAWN BY	DATE	TITLE			
3 PLACES ±	INCH	JFZHENG	2005/12/26	#28 HDMI TO DVI 1M CABLE ASSY			
2 PLACES ±		CHECKED BY	DATE				
1 PLACE ±		JFZHENG	2005/12/26				
ANGULAR ±		APPROVED BY	DATE				
		DQLUO	2005/12/26				
DRAFT WHERE APPLICABLE MUST REMAIN WITHIN DIMENSIONS		MATERIAL NO.		DOCUMENT NO.		SHEET NO.	
		ENTER PART		SD-887683520		1 OF 00	
THIS DRAWING CONTAINS INFORMATION THAT IS PROPRIETARY TO MOLEX AND SHOULD NOT BE USED WITHOUT WRITTEN PERMISSION							

7	6	5	4	3	2	1																																																																																															
E	<p>NOTE:</p> <p>1. OVERMOLD SPECIFICATION:            1.1 DVI BOOT MOLDED SNOW WHITE PVC RESIN 887800076,UL94V-0.            1.2 HDMI INNERMOLD WITH BK PVC 887800019.            HDMI OVERMOLD WITH PVC 887800150            1.3 HDMI DUST COVER WITH PE 8878000008</p>					E																																																																																															
D	<p>2. MECHANICAL SPECIFICATION            2.1 CABLE SHOULD STAND THE PULL FORCE 89-111N FOR 30 SECONDS WITH NO VISIBLE TERMINATION DAMAGE.            2.2 CABLE SHOULD PASS THE FLEX TEST IN 100 CYCLES AT EACH OF PLANES, PER EIA 364-41, CONDITION 1.            3. PRODUCT ELECTRICAL SPECIFICATION:            3.1 DIELECTRIC STRENGTH.            3.2 INSULATION RESISTANCE.            3.3 CONDUCTIVE RESISTANCE.            3.4 TMSD Signals Time Domain Impedence            3.5 TMSD Signals Time Domain Crosstalk:FEXT            3.6 TMSD Signals Skew            3.7 Attenuation            REFER TO ES-002 ELECTRICAL SPECIFICATION FOR DETAILS.            4.CABLE CONSTRUCTION(CABLE            (AWG#28*1P+D)*4 + AWG#28*1P + AWG#28*3C, 7.3MMOD            5. DVI CONNECTOR SPECIFICATION(DVI            5.1 REFER TO PRODUCT SPEC. PS74320-001            5.2 CONTACT PLATING: AU FLASH.            6. THIS PRODUCT MUST MEET ROHS COMPLIANCE.</p>					D																																																																																															
C	<table border="1"> <thead> <tr> <th>SHIELD</th> <th>SHIELD</th> <th>OVERALL SHIELD</th> <th>GROUND</th> <th>CABLE FUNCTION</th> </tr> </thead> <tbody> <tr><td>PIN 19</td><td>PIN 16</td><td>WHITE</td><td>HOT PLUG DETECT</td><td></td></tr> <tr><td>PIN 18</td><td>PIN 14</td><td>YELLOW</td><td>POWER +5V</td><td></td></tr> <tr><td>PIN 17</td><td>PIN 15</td><td>ORANGE</td><td>GROUND(+5V&amp;DDC)</td><td></td></tr> <tr><td>PIN 16</td><td>PIN 7</td><td>RED</td><td>DDC DATA(SDA)</td><td></td></tr> <tr><td>PIN 15</td><td>PIN 6</td><td>VIOLET</td><td>DDC CLOCK(SCL)</td><td></td></tr> <tr><td>PIN 12</td><td>PIN 24</td><td>WHITE</td><td>TMSD CLOCK-</td><td></td></tr> <tr><td>PIN 11</td><td>PIN 22</td><td>BRAID</td><td>TMSD CLOCK SHIELD</td><td></td></tr> <tr><td>PIN 10</td><td>PIN 23</td><td>BROWN</td><td>TMSD CLOCK+</td><td></td></tr> <tr><td>PIN 9</td><td>PIN 17</td><td>WHITE</td><td>TMSD DATA 0-</td><td></td></tr> <tr><td>PIN 8</td><td>PIN 19</td><td>BRAID</td><td>TMSD DATA 0 SHIELD</td><td></td></tr> <tr><td>PIN 7</td><td>PIN 18</td><td>BLUE</td><td>TMSD DATA 0+</td><td></td></tr> <tr><td>PIN 6</td><td>PIN 9</td><td>WHITE</td><td>TMSD DATA 1-</td><td></td></tr> <tr><td>PIN 5</td><td>PIN 11</td><td>BRAID</td><td>TMSD DATA 1 SHIELD</td><td></td></tr> <tr><td>PIN 4</td><td>PIN 10</td><td>GREEN</td><td>TMSD DATA 1+</td><td></td></tr> <tr><td>PIN 3</td><td>PIN 1</td><td>WHITE</td><td>TMSD DATA 2-</td><td></td></tr> <tr><td>PIN 2</td><td>PIN 3</td><td>BRAID</td><td>TMSD DATA 2 SHIELD</td><td></td></tr> <tr><td>PIN 1</td><td>PIN 2</td><td>RED</td><td>TMSD DATA 2+</td><td></td></tr> <tr><td>HDMI</td><td>DVI-D</td><td>COLOR</td><td></td><td></td></tr> </tbody> </table>					SHIELD	SHIELD	OVERALL SHIELD	GROUND	CABLE FUNCTION	PIN 19	PIN 16	WHITE	HOT PLUG DETECT		PIN 18	PIN 14	YELLOW	POWER +5V		PIN 17	PIN 15	ORANGE	GROUND(+5V&DDC)		PIN 16	PIN 7	RED	DDC DATA(SDA)		PIN 15	PIN 6	VIOLET	DDC CLOCK(SCL)		PIN 12	PIN 24	WHITE	TMSD CLOCK-		PIN 11	PIN 22	BRAID	TMSD CLOCK SHIELD		PIN 10	PIN 23	BROWN	TMSD CLOCK+		PIN 9	PIN 17	WHITE	TMSD DATA 0-		PIN 8	PIN 19	BRAID	TMSD DATA 0 SHIELD		PIN 7	PIN 18	BLUE	TMSD DATA 0+		PIN 6	PIN 9	WHITE	TMSD DATA 1-		PIN 5	PIN 11	BRAID	TMSD DATA 1 SHIELD		PIN 4	PIN 10	GREEN	TMSD DATA 1+		PIN 3	PIN 1	WHITE	TMSD DATA 2-		PIN 2	PIN 3	BRAID	TMSD DATA 2 SHIELD		PIN 1	PIN 2	RED	TMSD DATA 2+		HDMI	DVI-D	COLOR			C
SHIELD	SHIELD	OVERALL SHIELD	GROUND	CABLE FUNCTION																																																																																																	
PIN 19	PIN 16	WHITE	HOT PLUG DETECT																																																																																																		
PIN 18	PIN 14	YELLOW	POWER +5V																																																																																																		
PIN 17	PIN 15	ORANGE	GROUND(+5V&DDC)																																																																																																		
PIN 16	PIN 7	RED	DDC DATA(SDA)																																																																																																		
PIN 15	PIN 6	VIOLET	DDC CLOCK(SCL)																																																																																																		
PIN 12	PIN 24	WHITE	TMSD CLOCK-																																																																																																		
PIN 11	PIN 22	BRAID	TMSD CLOCK SHIELD																																																																																																		
PIN 10	PIN 23	BROWN	TMSD CLOCK+																																																																																																		
PIN 9	PIN 17	WHITE	TMSD DATA 0-																																																																																																		
PIN 8	PIN 19	BRAID	TMSD DATA 0 SHIELD																																																																																																		
PIN 7	PIN 18	BLUE	TMSD DATA 0+																																																																																																		
PIN 6	PIN 9	WHITE	TMSD DATA 1-																																																																																																		
PIN 5	PIN 11	BRAID	TMSD DATA 1 SHIELD																																																																																																		
PIN 4	PIN 10	GREEN	TMSD DATA 1+																																																																																																		
PIN 3	PIN 1	WHITE	TMSD DATA 2-																																																																																																		
PIN 2	PIN 3	BRAID	TMSD DATA 2 SHIELD																																																																																																		
PIN 1	PIN 2	RED	TMSD DATA 2+																																																																																																		
HDMI	DVI-D	COLOR																																																																																																			
B	<table border="1"> <thead> <tr> <th>ITEM</th> <th>DESCRIPTION</th> <th>SCALE</th> <th>DESIGN UNITS</th> <th>METRIC</th> <th>THIRD ANGLE PROJECTION</th> <th>QTY.</th> </tr> </thead> <tbody> <tr><td>H</td><td>HDMI METAL PLATED</td><td>47152-6009</td><td>---</td><td></td><td></td><td>1</td></tr> <tr><td>G</td><td>HDMI METAL CAN</td><td>47152-4001</td><td>---</td><td></td><td></td><td>1</td></tr> <tr><td>F</td><td>HDMI HOUSING ASSY.</td><td>47152-1100</td><td>---</td><td></td><td></td><td>1</td></tr> <tr><td>E</td><td>DVI THUMB SCREW</td><td>887806077</td><td>---</td><td></td><td></td><td>2</td></tr> <tr><td>D</td><td>PCB</td><td>887899569/887899570</td><td>---</td><td></td><td></td><td>1</td></tr> <tr><td>C</td><td>ONE BODY CAN</td><td>887899392</td><td>---</td><td></td><td></td><td>1</td></tr> <tr><td>B</td><td>DVLD SINGLE CHANNEL G/F CONNECTOR</td><td>743230001</td><td>---</td><td></td><td></td><td>1</td></tr> <tr><td>A</td><td>DVI SINGLE LINK CABLE (SEE TABLE)</td><td></td><td>---</td><td></td><td></td><td>1</td></tr> </tbody> </table>					ITEM	DESCRIPTION	SCALE	DESIGN UNITS	METRIC	THIRD ANGLE PROJECTION	QTY.	H	HDMI METAL PLATED	47152-6009	---			1	G	HDMI METAL CAN	47152-4001	---			1	F	HDMI HOUSING ASSY.	47152-1100	---			1	E	DVI THUMB SCREW	887806077	---			2	D	PCB	887899569/887899570	---			1	C	ONE BODY CAN	887899392	---			1	B	DVLD SINGLE CHANNEL G/F CONNECTOR	743230001	---			1	A	DVI SINGLE LINK CABLE (SEE TABLE)		---			1	B																																
ITEM	DESCRIPTION	SCALE	DESIGN UNITS	METRIC	THIRD ANGLE PROJECTION	QTY.																																																																																															
H	HDMI METAL PLATED	47152-6009	---			1																																																																																															
G	HDMI METAL CAN	47152-4001	---			1																																																																																															
F	HDMI HOUSING ASSY.	47152-1100	---			1																																																																																															
E	DVI THUMB SCREW	887806077	---			2																																																																																															
D	PCB	887899569/887899570	---			1																																																																																															
C	ONE BODY CAN	887899392	---			1																																																																																															
B	DVLD SINGLE CHANNEL G/F CONNECTOR	743230001	---			1																																																																																															
A	DVI SINGLE LINK CABLE (SEE TABLE)		---			1																																																																																															
A	<table border="1"> <thead> <tr> <th colspan="2">GENERAL TOLERANCES (UNLESS SPECIFIED)</th> <th colspan="2">DIMENSION STYLE</th> <th colspan="2">TITLE</th> </tr> <tr> <th>mm</th> <th>INCH</th> <th>MM ONLY</th> <th>DATE</th> <th>MM</th> <th>METRIC</th> </tr> </thead> <tbody> <tr> <td>4 PLACES ±---</td> <td>±---</td> <td>JFZHENG</td> <td>2005/12/26</td> <td colspan="2">#28 HDMI TO DVI 1M CABLE ASSY</td> </tr> <tr> <td>3 PLACES ±---</td> <td>±---</td> <td>CHECKED BY</td> <td>DATE</td> <td colspan="2"></td> </tr> <tr> <td>2 PLACES ±---</td> <td>±---</td> <td>JFZHENG</td> <td>2005/12/26</td> <td colspan="2"></td> </tr> <tr> <td>1 PLACE ±---</td> <td>±---</td> <td>APPROVED BY</td> <td>DATE</td> <td colspan="2"></td> </tr> <tr> <td>ANGULAR ±---°</td> <td>±---°</td> <td>DQLUO</td> <td>2005/12/26</td> <td colspan="2"></td> </tr> <tr> <td colspan="2">DRAFT WHERE APPLICABLE MUST REMAIN WITHIN DIMENSIONS</td> <td colspan="2">MATERIAL NO.</td> <td colspan="2">DOCUMENT NO.</td> </tr> <tr> <td colspan="2"></td> <td colspan="2"></td> <td colspan="2">SD-887683520</td> </tr> <tr> <td colspan="2"></td> <td colspan="2"></td> <td colspan="2">SHEET NO. 2 OF 2</td> </tr> <tr> <td colspan="6">THIS DRAWING CONTAINS INFORMATION THAT IS PROPRIETARY TO MOLEX INCORPORATED AND SHOULD NOT BE USED WITHOUT WRITTEN PERMISSION</td> </tr> </tbody> </table>					GENERAL TOLERANCES (UNLESS SPECIFIED)		DIMENSION STYLE		TITLE		mm	INCH	MM ONLY	DATE	MM	METRIC	4 PLACES ±---	±---	JFZHENG	2005/12/26	#28 HDMI TO DVI 1M CABLE ASSY		3 PLACES ±---	±---	CHECKED BY	DATE			2 PLACES ±---	±---	JFZHENG	2005/12/26			1 PLACE ±---	±---	APPROVED BY	DATE			ANGULAR ±---°	±---°	DQLUO	2005/12/26			DRAFT WHERE APPLICABLE MUST REMAIN WITHIN DIMENSIONS		MATERIAL NO.		DOCUMENT NO.						SD-887683520						SHEET NO. 2 OF 2		THIS DRAWING CONTAINS INFORMATION THAT IS PROPRIETARY TO MOLEX INCORPORATED AND SHOULD NOT BE USED WITHOUT WRITTEN PERMISSION						A																													
GENERAL TOLERANCES (UNLESS SPECIFIED)		DIMENSION STYLE		TITLE																																																																																																	
mm	INCH	MM ONLY	DATE	MM	METRIC																																																																																																
4 PLACES ±---	±---	JFZHENG	2005/12/26	#28 HDMI TO DVI 1M CABLE ASSY																																																																																																	
3 PLACES ±---	±---	CHECKED BY	DATE																																																																																																		
2 PLACES ±---	±---	JFZHENG	2005/12/26																																																																																																		
1 PLACE ±---	±---	APPROVED BY	DATE																																																																																																		
ANGULAR ±---°	±---°	DQLUO	2005/12/26																																																																																																		
DRAFT WHERE APPLICABLE MUST REMAIN WITHIN DIMENSIONS		MATERIAL NO.		DOCUMENT NO.																																																																																																	
				SD-887683520																																																																																																	
				SHEET NO. 2 OF 2																																																																																																	
THIS DRAWING CONTAINS INFORMATION THAT IS PROPRIETARY TO MOLEX INCORPORATED AND SHOULD NOT BE USED WITHOUT WRITTEN PERMISSION																																																																																																					





PKT P/N	DESCRIPTION	LENGTH	CABLE COLOR	CABLE P/N
88768-3530	HDMI TO DVI-D(M) CABLE ASSY.5M	5000 ± 100	BLACK	7.3MM(TMDS - AWGR28) 887808276
88768-3520	HDMI TO DVI-D(M) CABLE ASSY.3M	3000 ± 80	BLACK	7.3MM(TMDS - AWGR28) 887808276
88768-3510	HDMI TO DVI-D(M) CABLE ASSY.2M	2000 ± 60	BLACK	7.3MM(TMDS - AWGR28) 887808276
88768-3500	HDMI TO DVI-D(M) CABLE ASSY.1M	1000 ± 30	BLACK	7.3MM(TMDS - AWGR28) 887808276

GENERAL TOLERANCES (UNLESS SPECIFIED)	QUALITY SYMBOLS	DESIGN STYLE	SCALE	DESIGN UNITS
4 PLACES ± --- INCH	▷=0	MM ONLY	---	METRIC
3 PLACES ± ---	▽=0	DRAWN BY JFZHENG	DATE 2005/12/26	TITLE #28 HDMI TO DVI 1M CABLE ASSY
2 PLACES ± ---		CHECKED BY JFZHENG	DATE 2005/12/26	
1 PLACE ± ---		APPROVED BY DQLUO	DATE 2005/12/26	
ANGULAR ± ---°		MATERIAL NO. ENTER PART SD-887683530	DOCUMENT NO.	SHEET NO. 1 OF 00
DRAFT WHERE APPLICABLE MUST REMAIN WITHIN DIMENSIONS				
THIS DRAWING CONTAINS INFORMATION THAT IS PROPRIETARY TO MOLEX AND SHOULD NOT BE USED WITHOUT WRITTEN PERMISSION				

**NOTE:**

1. OVERMOLD SPECIFICATION:
  - 1.1 DVI BOOT MOLDED SNOW WHITE PVC RESIN 887800076,UL94V-0.
  - 1.2 HDMI INNERMOLD WITH BK PVC 887800019.
  - 1.3 HDMI OVERMOLD WITH PVC 887800150

**2. MECHANICAL SPECIFICATION**

- 2.1 CABLE SHOULD STAND THE PULL FORCE 89-111N FOR 30 SECONDS WITH NO VISIBLE TERMINATION DAMAGE.
- 2.2 CABLE SHOULD PASS THE FLEX TEST IN 100 CYCLES AT EACH OF PLANES, PER EIA 364-41, CONDITION 1.

**3. PRODUCT ELECTRICAL SPECIFICATION:**

- 3.1 DIELECTRIC STRENGTH.
- 3.2 INSULATION RESISTANCE.
- 3.3 CONDUCTIVE RESISTANCE.
- 3.4 TMDS Signals Time Domain Impedence
- 3.5 TMDS Signals Time Domain Crosstalk:FEXT
- 3.6 TMDS Signals Skew
- 3.7 Attenuation

REFER TO ES-002 ELECTRICAL SPECIFICATION FOR DETAILS.

**4. CABLE CONSTRUCTION/CABLE**

(AWG#28\*1P+D)\*4 + AWG#28\*1P + AWG#28\*3C, 7.3MMOD

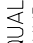
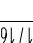
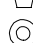
**5. DVI CONNECTOR SPECIFICATION(DVI)**

- 5.1 REFER TO PRODUCT SPEC. PS74320-001
- 5.2 CONTACT PLATING: AU FLASH.

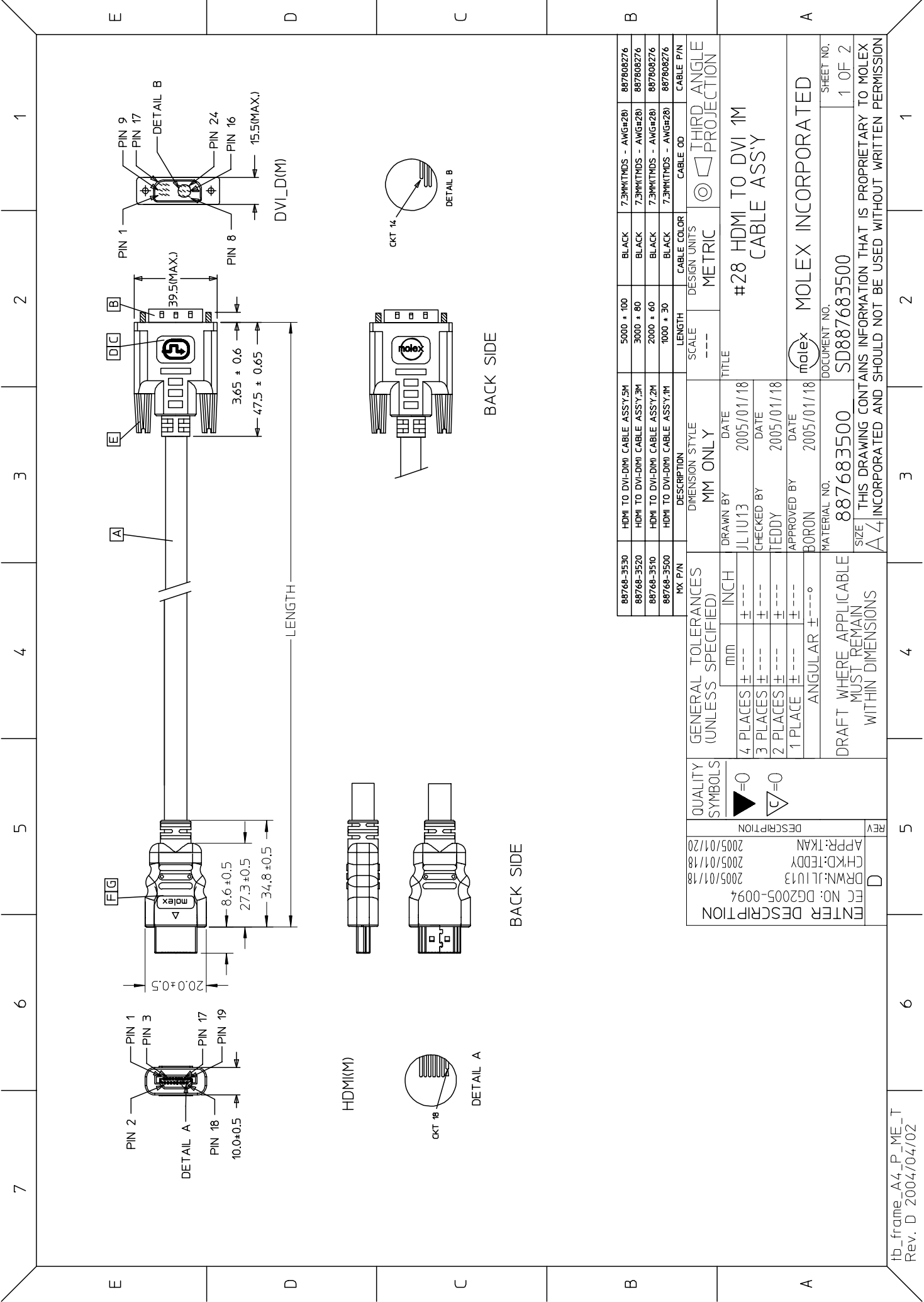
**6. THIS PRODUCT MUST MEET ROHS COMPLIANCE.**

SHIELD	SHIELD	OVERALL SHIELD	GROUND
PIN 19	PIN 16	WHITE	HOT PLUG DETECT
PIN 18	PIN 14	YELLOW	POWER +5V
PIN 17	PIN 15	ORANGE	GROUND(+5V&DDC)
PIN 16	PIN 7	RED	DDC DATA(SDA)
PIN 15	PIN 6	VIOLET	DDC CLOCK(SCL)
PIN 12	PIN 24	WHITE	TMDS CLOCK-
PIN 11	PIN 22	BRAID	TMDS CLOCK SHIELD
PIN 10	PIN 23	BROWN	TMDS CLOCK+
PIN 9	PIN 17	WHITE	TMDS DATA 0-
PIN 8	PIN 19	BRAID	TMDS DATA 0 SHIELD
PIN 7	PIN 18	BLUE	TMDS DATA 0+
PIN 6	PIN 9	WHITE	TMDS DATA 1-
PIN 5	PIN 11	BRAID	TMDS DATA 1 SHIELD
PIN 4	PIN 10	GREEN	TMDS DATA 1+
PIN 3	PIN 1	WHITE	TMDS DATA 2-
PIN 2	PIN 3	BRAID	TMDS DATA 2 SHIELD
PIN 1	PIN 2	RED	TMDS DATA 2+
HDMI	DVI-D	COLOR	CABLE FUNCTION

ITEM	DESCRIPTION	SCALE	DESIGN UNITS	METRIC	THIRD ANGLE PROJECTION	QTY.
H	HDMI METAL PLATED	47152-6009				1
G	HDMI METAL CAN	47152-4001				1
F	HDMI HOUSING ASSY.	47152-1100				1
E	DVI THUMB SCREW	887806077				2
D	PCB	887899569/887899570				1
C	ONE BODY CAN	887899392				1
B	DVI-D SINGLE CHANNEL G/F CONNECTOR	743230001				1
A	DVI SINGLE LINK CABLE (SEE TABLE)					1

QUALITY SYMBOLS	GENERAL TOLERANCES (UNLESS SPECIFIED)	DIMENSION STYLE	SCALE	DESIGN UNITS	METRIC	THIRD ANGLE PROJECTION
 =0  =5	4 PLACES ± --- INCH 3 PLACES ± --- INCH 2 PLACES ± --- INCH 1 PLACE ± --- INCH ANGULAR ± --- °	MM ONLY	---	METRIC		
DESCRIPTION APPR: DDLUO 2006/01/16 CHKD: 2005/12/30 DRWN: JFZHENG 2005/12/27 FIC NO: DG2006-0144 FTR NO: 0144 FTR NO: 0144 FTR NO: 0144 FTR NO: 0144	DRAFT WHERE APPLICABLE MUST REMAIN WITHIN DIMENSIONS	DRAWN BY JFZHENG 2005/12/26 CHECKED BY JFZHENG 2005/12/26 APPROVED BY DDLUO 2005/12/26	TITLE #28 HDMI TO DVI 1M CABLE ASSY	#28 HDMI TO DVI 1M CABLE ASSY		QTY.

MOLEX	DOCUMENT NO.	SHEET NO.
MOLEX INCORPORATED	SD-887683530	2 OF 2

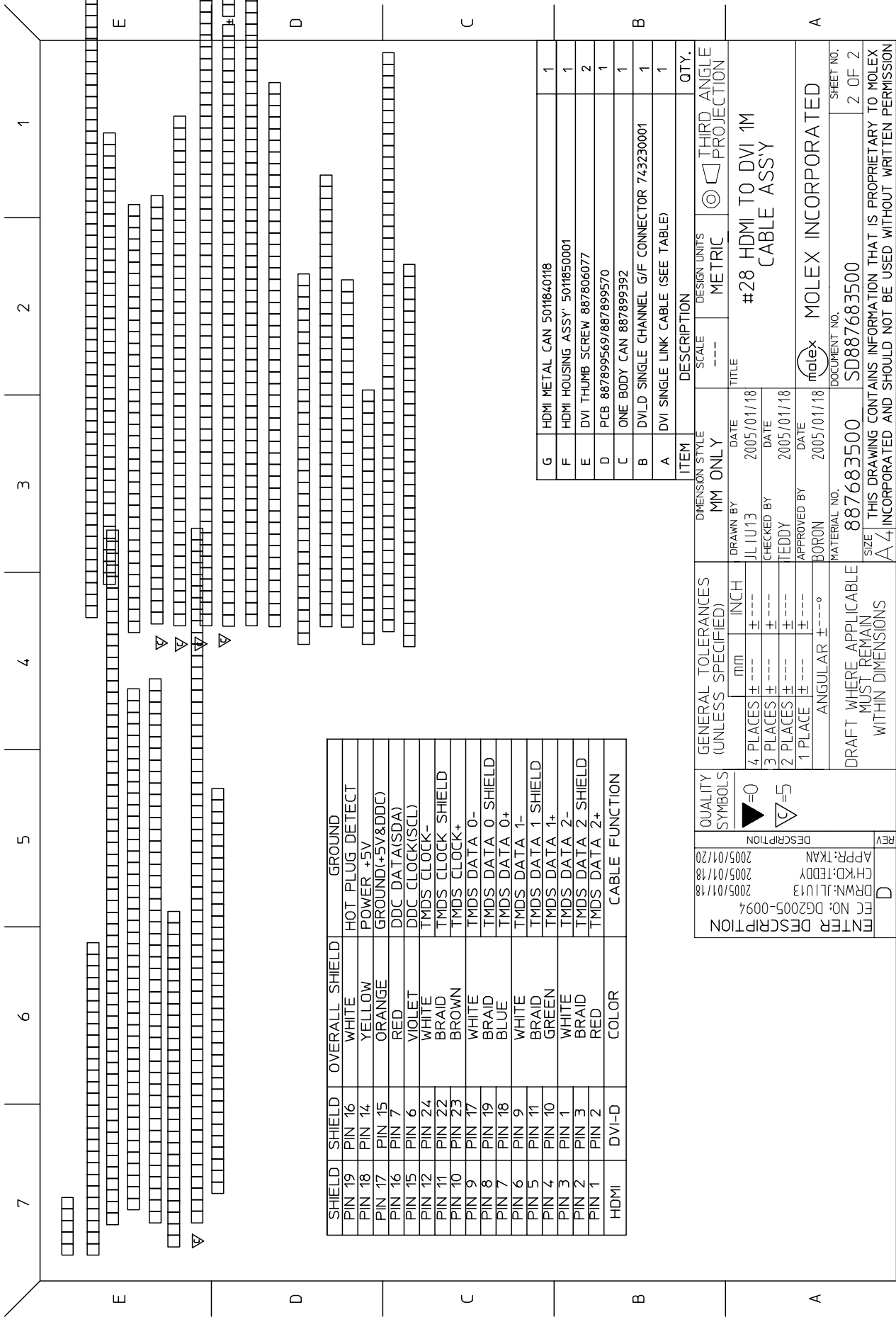


88768-3530	HDMI TO DVI-D(M) CABLE ASSY,5M	5000 ± 100	BLACK	7.3MM(TMS - AWG#28)	887808276
88768-3520	HDMI TO DVI-D(M) CABLE ASSY,3M	3000 ± 80	BLACK	7.3MM(TMS - AWG#28)	887808276
88768-3510	HDMI TO DVI-D(M) CABLE ASSY,2M	2000 ± 60	BLACK	7.3MM(TMS - AWG#28)	887808276
88768-3500	HDMI TO DVI-D(M) CABLE ASSY,1M	1000 ± 30	BLACK	7.3MM(TMS - AWG#28)	887808276

GENERAL TOLERANCES (UNLESS SPECIFIED)		DIMENSION STYLE		SCALE		DESIGN UNITS		CABLE P/N	
		MM ONLY		---		METRIC		THIRD ANGLE PROJECTION	
4 PLACES ±	mm	INCH	DATE	DATE	TITLE	#28 HDMI TO DVI 1M CABLE ASSY			
3 PLACES ±			JLIU13	2005/01/18					
2 PLACES ±			TEDDY	2005/01/18					
1 PLACE ±			APPROVED BY	DATE					
ANGULAR ±			BORON	2005/01/18					

QUALITY SYMBOLS		DRAFT WHERE APPLICABLE MUST REMAIN WITHIN DIMENSIONS		MATERIAL NO.		DOCUMENT NO.		SHEET NO.	
▶=0		DRAFT WHERE APPLICABLE MUST REMAIN WITHIN DIMENSIONS		887683500		SD887683500		1 OF 2	
∇=0									

REVISIONS		DESCRIPTION		DATE		APPROVED BY		DATE	
D	ENTER DESCRIPTION	DRWN:JLIU13	2005/01/18	CHKD:TEDDY	2005/01/18	APPR:TKAN	2005/01/20		



SHIELD	SHIELD	OVERALL SHIELD	GROUND
PIN 19	PIN 16	WHITE	HOT PLUG DETECT
PIN 18	PIN 14	YELLOW	POWER +5V
PIN 17	PIN 15	ORANGE	GROUND(+5V&DDC)
PIN 16	PIN 7	RED	DDC DATA(SDA)
PIN 15	PIN 6	VIOLET	DDC CLOCK(SCL)
PIN 12	PIN 24	WHITE	TMDS CLOCK-
PIN 11	PIN 22	BRAID	TMDS CLOCK SHIELD
PIN 10	PIN 23	BROWN	TMDS CLOCK+
PIN 9	PIN 17	WHITE	TMDS DATA 0-
PIN 8	PIN 19	BRAID	TMDS DATA 0 SHIELD
PIN 7	PIN 18	BLUE	TMDS DATA 0+
PIN 6	PIN 9	WHITE	TMDS DATA 1-
PIN 5	PIN 11	BRAID	TMDS DATA 1 SHIELD
PIN 4	PIN 10	GREEN	TMDS DATA 1+
PIN 3	PIN 1	WHITE	TMDS DATA 2-
PIN 2	PIN 3	BRAID	TMDS DATA 2 SHIELD
PIN 1	PIN 2	RED	TMDS DATA 2+
HDMI	DVI-D	COLOR	CABLE FUNCTION

ITEM	DESCRIPTION	SCALE	DESIGN UNITS	THIRD ANGLE PROJECTION	QTY.
G	HDMI METAL CAN 501840118	---	METRIC		1
F	HDMI HOUSING ASSY' 5011850001	---	METRIC		1
E	DVI THUMB SCREW 887806077	---	METRIC		2
D	PCB 887899569/887899570	---	METRIC		1
C	ONE BODY CAN 887899392	---	METRIC		1
B	DVI-D SINGLE CHANNEL G/F CONNECTOR 743230001	---	METRIC		1
A	DVI SINGLE LINK CABLE (SEE TABLE)	---	METRIC		1

QUALITY SYMBOLS	GENERAL TOLERANCES (UNLESS SPECIFIED)	MM ONLY	DATE	DESCRIPTION
	4 PLACES ±---	DRAWN BY	2005/01/18	JLIU13
	3 PLACES ±---	CHECKED BY	2005/01/18	TEDDY
	2 PLACES ±---	APPROVED BY	2005/01/18	BORON
	1 PLACE ±---	MATERIAL NO.	2005/01/18	887683500
	ANGULAR ±---°	DOCUMENT NO.	2005/01/18	SD887683500
DRAFT WHERE APPLICABLE MUST REMAIN WITHIN DIMENSIONS				

ENTER DESCRIPTION  
 PPR:TKAN  
 CH:TEDDY  
 DATE:2005/01/18  
 DATE:2005/01/18  
 DATE:2005/01/18

1b\_frame\_A4\_P\_ME\_T  
 Rev. D 2004/04/02