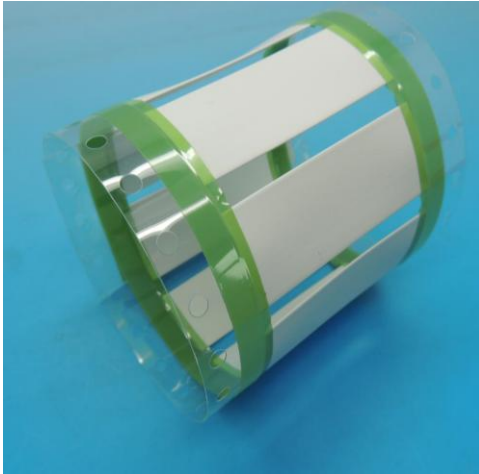


Normal Grade Heat Shrink Marker Sleeve



Model number: SBD-SWHF-M

Working temperature: -40°C ~ +125°C

Structure

Normal grade heat shrink marker sleeve is developed environment-friendly flame retardant heat shrinkable tube, using specially designed formulation of high polymers, through cross-link by electronic accelerator and continuous expansion.

Usage

SB-SWHF-M heat shrink marker sleeve is widely used for wire and cable harness identification. It can also be used for applications where limited fire hazard characteristics are necessary.

Characteristics

Material	The sleeving shall be fabricated from irradiated, thermally stabilized and flame retarded modified polyolefin compound containing no halogens or cadmium in the formulation
Application range	Commercial, Industrial environment
Operating temperature range	-40°C ~ +125°C
Minimum recovery temperature	+85°C
Maximum storage temperature	+50°C
Shrink ratio	2:1, 3:1
Color	White, Yellow, other color is available if ordered
Printing mode	Single sided printing and Double sided printing formats available
Supplied mode	Either Continuous type or Ladder format type is available
Recommended Printers	Thermal transfer printer

Specification: Shrink Ratio-2X

Model Number	As Supplied (mm)			After Recovery(mm)	
	ID(D)	Flatten Width(w)	Double Wall Thickness	ID(d)	Single Wall Thickness
SWHF-M-2X-1.6-50-2.5K	2.00±0.20	3.7±0.3	0.48±0.10	≤0.79	0.45±0.06
SWHF-M-2X-2.4-50-2.5K	2.79±0.20	5.0±0.3	0.48±0.10	≤1.18	0.49±0.06
SWHF-M-2X-3.2-50-2.0K	3.64±0.23	6.3±0.4	0.48±0.10	≤1.59	0.51±0.06
SWHF-M-2X-4.8-50-2.0K	5.26±0.25	8.9±0.4	0.49±0.10	≤2.36	0.54±0.06
SWHF-M-2X-6.4-50-1.5K	6.92±0.28	11.5±0.4	0.50±0.10	≤3.18	0.56±0.06
SWHF-M-2X-9.5-50-1.0K	10.2±0.32	16.7±0.5	0.51±0.11	≤4.75	0.59±0.06
SWHF-M-2X-12.7-50-1.0K	13.5±0.36	21.8±0.6	0.52±0.11	≤6.35	0.60±0.07
SWHF-M-2X-19-50-0.5K	20.1±0.40	32.2±0.6	0.53±0.11	≤9.53	0.62±0.07
SWHF-M-2X-25-50-0.5K	26.7±0.45	42.5±0.7	0.55±0.12	≤12.7	0.63±0.07

SHEN ZHEN SUNBOW INSULATION MATERIALS MFG.CO., LTD.

SWHF-M-2X-38-50-0.5K	39.8±0.51	63.2±0.8	0.57±0.12	≤19.1	0.64±0.07
SWHF-M-2X-51-50-0.25K	53.0±0.56	83.9±0.9	0.58±0.13	≤25.4	0.64±0.08
SWHF-M-2X-76-50-0.25K	79.4±0.56	125.3±1.0	0.59±0.13	≤38.1	0.64±0.09

Specification: Shrink Ratio-3X

Model Number	As Supplied (mm)			After Recovery(mm)	
	ID(D)	Flatten Width(W)	Double Wall Thickness	ID(d)	Single Wall Thickness
SWHF-M-3X-1.6-50-2.5K	2.00±0.20	3.7±0.3	0.47±0.10	≤0.53	0.52±0.06
SWHF-M-3X-2.4-50-2.5K	2.79±0.20	5.0±0.3	0.47±0.10	≤0.79	0.57±0.06
SWHF-M-3X-3.2-50-2.0K	3.64±0.23	6.3±0.4	0.48±0.10	≤1.06	0.61±0.06
SWHF-M-3X-4.8-50-2.0K	5.26±0.25	8.9±0.4	0.49±0.10	≤1.59	0.67±0.06
SWHF-M-3X-6.4-50-1.5K	6.92±0.28	11.5±0.4	0.50±0.10	≤2.36	0.71±0.06
SWHF-M-3X-9.5-50-1.0K	10.2±0.32	16.7±0.5	0.52±0.11	≤3.18	0.77±0.06
SWHF-M-3X-12.7-50-1.0K	13.5±0.36	21.8±0.6	0.53±0.11	≤4.75	0.80±0.07
SWHF-M-3X-19-50-0.5K	20.1±0.40	32.2±0.6	0.55±0.11	≤6.35	0.84±0.07
SWHF-M-3X-25-50-0.5K	26.7±0.45	42.5±0.7	0.56±0.12	≤8.47	0.86±0.07
SWHF-M-3X-38-50-0.5K	39.8±0.51	63.2±0.8	0.57±0.12	≤12.9	0.89±0.07
SWHF-M-3X-51-50-0.25K	53.0±0.56	83.9±0.9	0.57±0.13	≤17.2	0.90±0.08
SWHF-M-3X-76-50-0.25K	79.4±0.56	125.3±1.0	0.57±0.13	≤25.8	0.92±0.09

Color: Standard color is white and yellow. Other colors are available if ordered.

SWHF - M- 3X - 1.6 - 50 - 2.5K

