

swissbit®

Product Fact Sheet

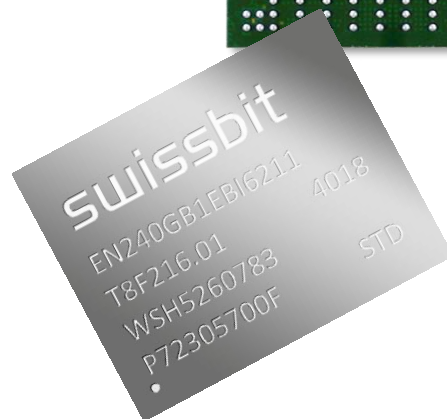
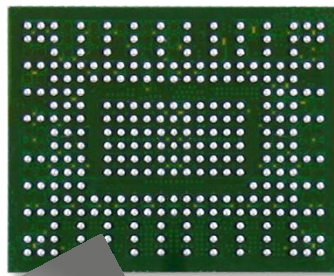
Industrial PCIe BGA SSD (M.2 1620 BGA)

EN-20 Series

PCIe Gen 3.1, 16x20mm BGA

Industrial Temperature Grade

Date: February 17, 2020
Revision: 1.00



Product Summary

- **Capacities:** 15 GBytes, 30 GBytes, 60 GBytes, 120 GBytes, 240 GBytes
- **Form Factor:** PCI Express® M.2 BGA (1620) (16mm x 20mm x 1.8mm)
- **Compliance:** PCI Express (PCIe) Specification Revision 3.1
- **Interface:** Gen3 x 4 Lanes
- **Command Sets:** Supports NVMe 1.3
- **Performance:**
 - Read Performance: Sequential Read up to 1,600 MBytes/s, Random Read 4K up to 145,000 IOPS
 - Write Performance: Sequential Write up to 680 MBytes/s, Random Write 4K up to 105,000 IOPS
- **Operating Temperature Range¹**
 - Industrial: -40 °C to 85 °C
- **Storage Temperature Range:** -40°C to 85°C
- **Operating Voltage:** 3.3, 1.8 and 0.9V supply voltages
- **Low Power Consumption**
- **Power:**
 - Power States P0, P1, P2, P3 and P4
 - Thermal Throttling supported
- **Data Retention:** 10 Years @ Life Begin; 1 Year @ Life End
- **High-Performance Processor with Integrated, Parallel Flash Interface Engines:**
 - 3D NAND Flash
 - LDPC Code ECC (up to 120bit corrections per 1KByte page)
 - End-to-end data path protection
 - Increased Overprovisioning for improved performance and endurance
 - Page RAID feature

Product Features

- Dynamic and Static Wear Leveling
- Subpage Mode Flash Translation Layer (FTL)
- Data Care Management
 - Active: Adaptive Read Refresh
 - Passive: Background Media Scan
- Lifetime Enhancements
 - Dynamic Bad Block Remapping
 - Write Amplification Reduction
- Power Fail Data Loss Protection
- In-Field Firmware Update
- Self-Monitoring, Analysis, and Reporting Technology (S.M.A.R.T.)
- Swissbit Life Time Monitoring (SBLTM) Tool and SDK for SBLTM
- AES256 Encryption (on request)

Why Swissbit?

Swissbit is focused on the design, development, manufacture, and support of leading edge memory and storage solutions for the worldwide OEM/ODM marketplace. As a global supplier, Swissbit recognizes and addresses the higher level of application requirements of today's industrial, Netcom, and automotive customers by providing best-in-class products and services, with uncompromised attention to driving overall value and quality.

¹ Adequate airflow is required to ensure the drive temperature, as reported in the S.M.A.R.T. data, does not exceed the specified maximum operating temperature.

Mouser Electronics

Authorized Distributor

Click to View Pricing, Inventory, Delivery & Lifecycle Information:

Swissbit:

[SFEN015GB2EC1TO-I-5E-221-STD](#) [SFEN030GB2EC1TO-I-5E-221-STD](#) [SFEN060GB2EC2TO-I-5E-221-STD](#)
[SFEN120GB2EC4TO-I-5E-221-STD](#) [SFEN240GB2EC4TO-I-6F-221-STD](#)