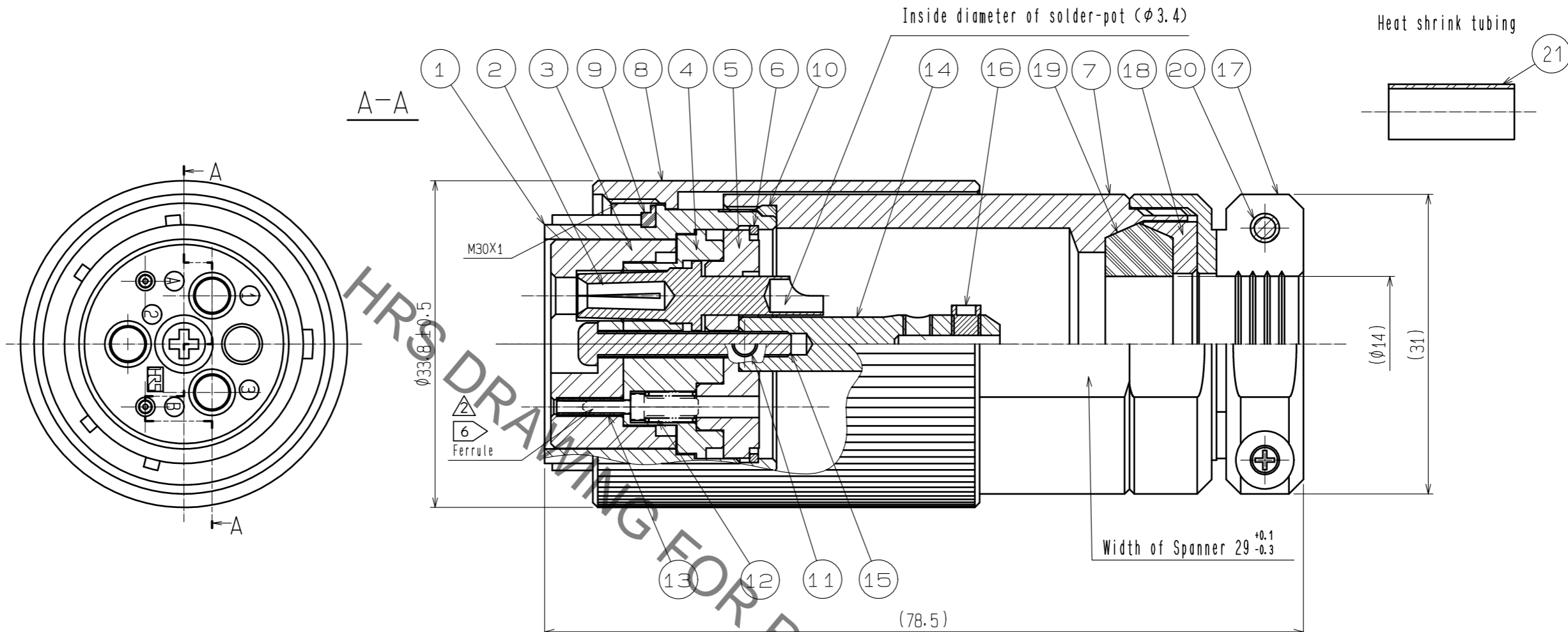


Jun.1.2021 Copyright 2021 HIROSE ELECTRIC CO., LTD. All Rights Reserved.
In case of consideration for using Automotive equipment / device which demand high reliability, kindly contact our sales window correspondents.



- Note
1. This drawing shows the state of temporary assembly.
 2. The direction of No.7, No.17 is one example.
 3. The direction of Solder-pot(No.2) is one example.
 4. A product corresponding to Rohs.
 - △ 5. For assembling procedure, please contact our companies sales section and refer to procedure manual ETAD-K0221-00.
 - △ 6 The Ferrule is not included.
Please use the MU ferrule, which is sold separately.

11	Stainless steel						
10	Silicon rubber	Black		21	Polyolefin	Black	
9	Silicon rubber	Black		20	Stainless steel		
8	Brass	Black Cr-plating		19	Silicon rubber	Black	
7	Brass	Black Cr-plating		18	PPS	Black	
6	Phosphor bronze	Ni-plating		17	Brass	Black Cr-plating	
5	PPS	Black		16	Stainless steel		
4	PPS	Black		15	Stainless steel		
3	PPS	Black		14	Brass	Ni-plating	
2	Phosphor bronze	Ag-plating		13	Zirconia		
1	Aluminium	Black Cr-plating		12	Piano wire △	Zn-plating	
NO.	MATERIAL	FINISH .	REMARKS	NO.	MATERIAL	FINISH .	REMARKS
UNITS	mm	SCALE	2 : 1	COUNT	4	DESCRIPTION OF REVISIONS	DESIGNED
						DIS-K-00001733	BENJAMIN RILEY
							CHECKED
							YY.HIYAMA
							DATE
							20181207
HRS HIROSE ELECTRIC CO., LTD.		APPROVED	HA. OKANO	20080617	DRAWING NO.	EDC3-175973-00	
		CHECED	KS. JOKURA	20080616	PART NO.	MF25S-WP14S02-0203	
		DESIGNED	YH. MASUZAKI	20080616	CODE NO.	CL709-0209-9-00	
		DRAWN	YH. MASUZAKI	20080616			1/1

Mouser Electronics

Authorized Distributor

Click to View Pricing, Inventory, Delivery & Lifecycle Information:

[Hirose Electric:](#)

[MF25S-WP14S02-0203](#)