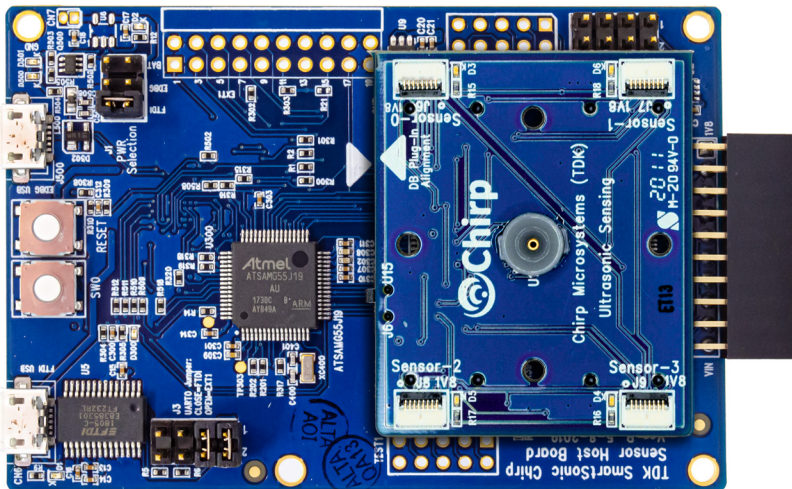


## DK-CH201

### Development Kit for CH201 Ultrasonic Time-of-Flight Sensor

#### Overview

The DK-CH201 is a comprehensive development platform for CH201, a long-range miniature ultrasonic time-of-flight range sensor with a range of up to 5m. The development kit is equipped with an on-board CH201 sensor and up to four external CH201 or CH101 sensor modules can be connected to the board via flat-flex cables for easy prototyping.



Part of the SmartSonic platform, the DK-CH201 is designed around Atmel's SAM55 Cortex-M4 MCU, and can be used by developers for rapid evaluation and development of CH201 based solutions. The DK-CH201 includes an on-board Embedded Debugger so external tools are not required to program or debug the SAM55 MCU. The DK-CH201 includes an on-board Embedded Debugger so external tools are not required to program or debug the SAM55 MCU.

The development kit comes with necessary software including SonicLink, a GUI based development tool and embedded drivers for CH201.

SonicLink is a GUI based development tool included with the platform. It can be used to capture and visualize the sensor data from the on-board CH201 ultrasonic sensor and external CH201 or CH101 sensor modules.

#### Key Features

- *Ultralow power range sensing*
- *Accurate range measurement regardless of target size*
- *Detects objects of any color, including optically transparent ones*
- *Immunity to ambient noise*
- *Works under any lighting condition*
- *Synchronized multi-sensor operation enables 2D and 3D range sensing*
- *Wide field of view (FoV)*