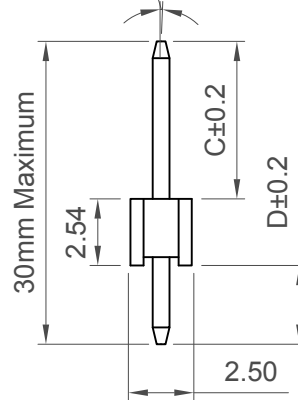


2° Max. Sway & Toe  
(Either Direction At The top)



**Specifications**

**Material**

Insulator:  
Standard: Polyamide, Nylon 6T, UL94V-0  
Options: Polymer, LCP, UL94V-0  
Polyester, PBT, UL94V-0  
Contact: Copper Alloy

**Plating**

Contact: See ordering grid

**Electrical**

Current Rating: 3 Amp Per Pin  
Contact Resistance: 20 mΩ max.  
Insulation Resistance : 1000 MΩ min.  
Dielectric Withstand Voltage: 600 V AC

**Mechanical & Environmental**

Operating Temperature: -40°C to +105°C

**Soldering Process**

Nylon 6T (Standard)  
IR Reflow: 260°C for 10 sec.  
Wave: 230°C for 5-10 sec  
Manual Solder : 350°C for 3-5 sec  
LCP (Option)  
IR Reflow: 260°C for 10 sec.  
Wave: 250°C for 5-10 sec.  
Manual Solder: 350°C for 3-5sec  
PBT (Option )  
Manual Solder: 330°C for 3-5sec  
(not suitable for hi-temp process)

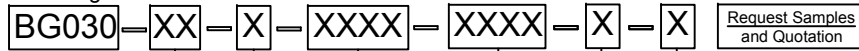
**Mates with (Subject to Pin Length)**

BG090 BG095 BG096 BG100 BG110  
BG115 BG125 BG126 BG130 BG135  
BG145 BG205 BG230

BG090 Recommended mating length 4.00mm  
BG095 Recommended mating length 4.00mm

| Number of Contacts | Dimensions |        |
|--------------------|------------|--------|
|                    | A          | B      |
| 1                  | /          | 2.54   |
| 2                  | 2.54       | 5.08   |
| 3                  | 5.08       | 7.62   |
| 4                  | 7.62       | 10.16  |
| 5                  | 10.16      | 12.70  |
| 6                  | 12.70      | 15.24  |
| 7                  | 15.24      | 17.78  |
| 8                  | 17.78      | 20.32  |
| 9                  | 20.32      | 22.86  |
| 10                 | 22.86      | 25.40  |
| 11                 | 25.40      | 27.94  |
| 12                 | 27.94      | 30.48  |
| 13                 | 30.48      | 33.02  |
| 14                 | 33.02      | 35.56  |
| 15                 | 35.56      | 38.10  |
| 16                 | 38.10      | 40.64  |
| 17                 | 40.64      | 43.18  |
| 18                 | 43.18      | 45.72  |
| 19                 | 45.72      | 48.26  |
| 20                 | 48.26      | 50.80  |
| 21                 | 50.80      | 53.34  |
| 22                 | 53.34      | 55.88  |
| 23                 | 55.88      | 58.42  |
| 24                 | 58.42      | 60.96  |
| 25                 | 60.96      | 63.50  |
| 26                 | 63.50      | 66.04  |
| 27                 | 66.04      | 68.58  |
| 28                 | 68.58      | 71.12  |
| 29                 | 71.12      | 73.66  |
| 30                 | 73.66      | 76.20  |
| 31                 | 76.20      | 78.74  |
| 32                 | 78.74      | 81.28  |
| 33                 | 81.28      | 83.82  |
| 34                 | 83.82      | 86.36  |
| 35                 | 86.36      | 88.90  |
| 36                 | 88.90      | 91.44  |
| 37                 | 91.44      | 93.98  |
| 38                 | 93.98      | 96.52  |
| 39                 | 96.52      | 99.06  |
| 40                 | 99.06      | 101.60 |

**Ordering Grid**



No. of Contacts  
01 to 40

**Contact Plating**

**A = Gold Flash All Over (Standard)**  
B = Selective Gold Flash Contact Area/Tin On Tail  
C = Tin All Over  
G = 10µ" Gold Contact Area/Tin On Tail  
I = 30µ" Gold Contact Area/Tin On Tail  
L = Matte Tin

**Dimension C (1/100mm) (Post Height)**

**0400 = 4.00mm (Standard)**  
**0450 = 4.50mm (Standard)**  
**0650 = 6.50mm (Standard)**  
Or specify custom Post Height  
e.g. 0250 = 2.50mm  
(Maximum 2000=20.00mm)  
(Minimum 0050=0.50mm)

**Packing Options**

**G = Plastic Box (Standard)**  
B = Tape & Reel with Cap  
D = Tube  
E = Tube with Cap

**Insulator Material**

**N = Nylon 6T (Standard)**  
P = PBT  
L = LCP

**Dimension D (1/100mm) (Tail Length)**

**0300 = 3.00mm (Standard)**  
Or specify custom Tail Length  
e.g. 0250 = 2.50mm  
(Maximum 2000=20.00mm)  
(Minimum 0050=0.50mm)

|   |          |                                    |               |
|---|----------|------------------------------------|---------------|
| Part Number   |          | Product Description                |               |
| BG030   |          | 2.54mm pitch Pin Header            |               |
| Drawing Date  |          | Single Row, Through-Hole, Vertical |               |
| 1st November 2006   |          |                                    |               |
| By  | CC       | Tolerances (Except as Noted)       | Units:        |
| Detail  | BG030    | Length<br>X. ± 0.30                | Metric (mm)   |
| Revision  | G5       | Angle<br>X.X ± 0.20                |               |
| Date  | 06/09/17 | X.XX ± 0.15                        |               |
|   |          | X.XXX ± 0.10                       |               |
|   |          | X.XX° ± 2°                         |               |
|   |          | X.XX° ± 1°                         |               |
|   |          | X.XXX° ± 0.5°                      |               |
|   |          | 3rd Angle Projection               |               |
|   |          | RoHS COMPLIANT 2011/65/UE          |               |
|   |          | Deca-SIDE                          |               |
| This drawing is confidential and copyright of Global Connector Technology Ltd (GCT). This drawing must not be copied or disclosed without written consent. E & OE |          |                                    |               |
| Not to Scale  |          | Drawn By LYH                       | Sheet No. 1/1 |



# Mouser Electronics

Authorized Distributor

Click to View Pricing, Inventory, Delivery & Lifecycle Information:

[Global Connector Technology \(GCT\):](#)

[BG030-03-A-0450-0300-N-G](#)