

AirMax VSe[®] 25GB/S BACKPLANE CONNECTOR SYSTEM

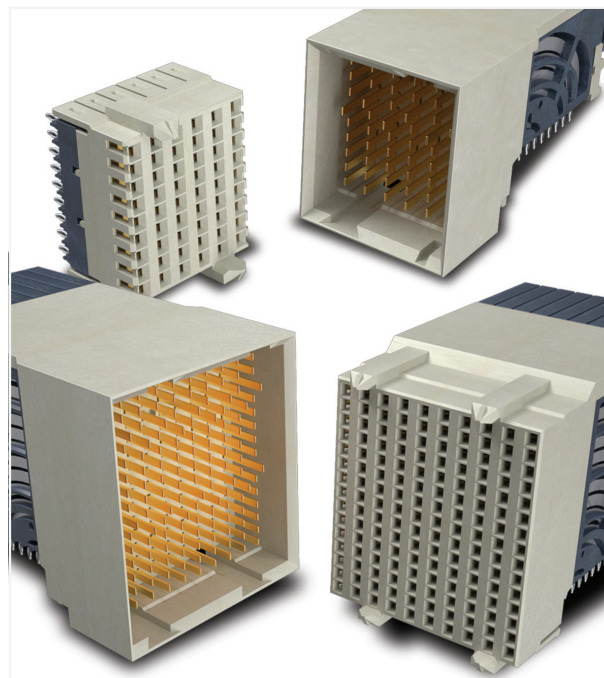
OVERVIEW

Next-generation AirMax VSe[®] connectors provide a migration path for up to 25Gb/s per differential pair with the flexibility of an open pin field design. The connectors also feature backwards mating-compatible interfaces to existing AirMax VS[®] connectors with minimal changes to connector footprints.

The connectors combine FCI technologies for a shieldless design with no metallic plates and closely edge-coupled differential pairs with innovative design improvements to yield low loss and low crosstalk.

Right angle receptacles and right angle headers will support backplane, midplane or coplanar applications.

The mating-compatible interfaces and capability to preserve critical pin assignments can provide opportunities for cost savings as new or upgraded equipment is deployed. For example, a backplane or chassis can be designed to allow the installation and continued use of legacy daughter cards, line cards or blades that are already in the field as well as new or future higher-speed module cards.



FEATURES

- Provides a migration path for up to 25Gb/s per differential pair
- Shieldless design with closely coupled pairs
- Backward mateable to existing AirMax VS[®] and AirMax VS2[®] designs
- 3, 4 and 5 pair backplane and coplanar versions are available
- Hard metric design practice

BENEFITS

- Enables users to upgrade systems for higher performance in the same form factor
- Cost-effective solution yields low XT and Insertion Loss
- Fall in upgrade to previous generation systems
- Same product covers a wide range of customer applications
- Can mix-and-match with other metric power and guidance components to create a system precisely





TECHNICAL INFORMATION

MATERIALS

- Contacts: High performance Copper Alloy
- Contact Finish:
 - Performance-based plating at separable interface (Telcordia GR-1217-CORE Central Office)
 - Tin over Nickel on press-fit tails
 - Tin-lead option
- Housings: High Performance Thermoplastic, UL94-V0

ELECTRICAL PERFORMANCES

- Contact Resistance: $\leq 60\text{ m}\Omega$ initial in backplane application, $\leq 120\text{ m}\Omega$ initial in coplanar application
- Current Rating (with $\leq 30^\circ\text{C}$ temperature rise above ambient): 0.5 A/contact with all contacts powered
- Insertion Loss Performance: see graph below
- Crosstalk Performance: see graph below

ENVIRONMENTAL

- Telcordia GR-1217-CORE Central Office qualification passed

MECHANICAL PERFORMANCE

- Durability: 200 cycles
- Mating Force: 0.50N max./contact
- Unmating Force: 0.15N min./contact
- Average Compliant Pin Insertion Force/ pin:
 - 0.4mm PCB hole: 15N max.
 - 0.5mm PCB hole: 30N max.

SPECIFICATIONS

- Product: GS-12-0956
- Application: GS-20-0305

APPROVALS AND CERTIFICATIONS

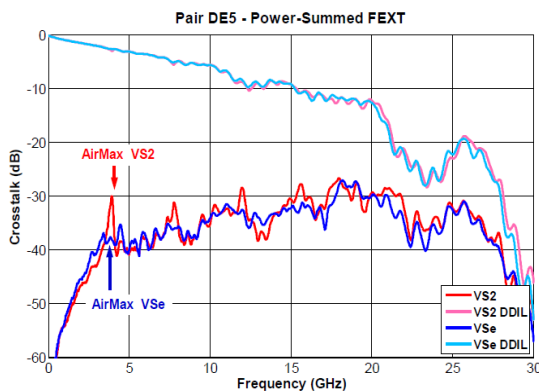
- UL approved

PACKAGING

- Trays or Tubes

TARGET MARKETS/APPLICATIONS

- Communications
 - Switches
 - Routers
 - Access
 - Optical Transmission
 - Wireless Base Stations
- Data
 - Servers
 - Switches
 - Storage
- Industrial & Instrumentation
 - Test & Measurement
- Medical



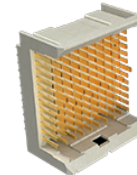
PART NUMBERS

AirMax VSe® TRADITIONAL MOTHER-DAUGHTER BOARD CONNECTORS

Product Variation			2.0mm Column Pitch		Differential Impedance
Pairs	Columns	Differential Pairs	Mating Connector System		
			Vertical Header (2 Wall)	Right Angle Receptacle	
3	6	18	10116601-101LF	10115910-101LF	100 OHMS
	8	24	10129146-101LF	10122263-101LF	
	10	30	10130519-101LF	10124432-101LF	
4	6	24	10130521-101LF	10130562-101LF	
	8	32	10130531-101LF	10130563-101LF	
	10	40	10117992-101LF	10115911-101LF	
5	8	40	10130530-101LF	10130564-101LF	
	10	60	10116602-101LF	10115913-101LF	



Right Angle Receptacle



Vertical Header (2 Wall)

AirMax VSe® INVERSE MOTHER-DAUGHTER BOARD CONNECTORS

Product Variation			2.0mm Column Pitch		Differential Impedance
Pairs	Columns	Differential Pairs	Mating Connector System		
			Vertical Receptacle	Right Angle Header (4 Wall)	
3	6	18	10120757-101LF	10119886-101LF	100 OHMS
	8	24	10120758-101LF	10122919-101LF	
	10	30	10120759-101LF	10124451-101LF	
4	6	24	10120764-101LF	10130569-101LF	
	8	32	10120765-101LF	10124864-101LF	
	10	40	10120766-101LF	10120001-101LF	
5	8	40	10120771-101LF	10130570-101LF	
	10	60	10120773-101LF	10120009-101LF	



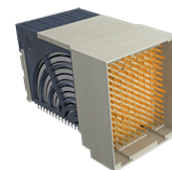
Right Angle Header (4 Wall)



Vertical Receptacle

AirMax VSe® COPLANAR CONNECTORS

Product Variation			2.0mm Column Pitch		Differential Impedance
Pairs	Columns	Differential Pairs	Mating Connector System		
			Right Angle Receptacle	Right Angle Header (4 Wall)	
3	6	18	10115910-101LF	10119886-101LF	100 OHMS
	8	24	10122263-101LF	10122919-101LF	
	10	30	10124432-101LF	10124451-101LF	
4	6	24	10130562-101LF	10130569-101LF	
	8	32	10130563-101LF	10124864-101LF	
	10	40	10115911-101LF	10120001-101LF	
5	8	40	10130564-101LF	10130570-101LF	
	10	60	10115913-101LF	10120009-101LF	



Right Angle Header (4 Wall)



Right Angle Receptacle

* AirMax VSe® parts all have GXT™ plating and 0.4mm small press-fit tails

BPLAIRMVSE0115EA4

Mouser Electronics

Authorized Distributor

Click to View Pricing, Inventory, Delivery & Lifecycle Information:

[FCI / Amphenol:](#)

10116601-101LF	10120001-101LF	10115911-101LF	10116602-101LF	10117992-101LF	10115910-101LF
10120009-101LF	10115913-101LF	10119886-101LF	10115912-101LF	10118260-101LF	10122263-101LF
10122919-101LF	10127542-101LF	10120766-101LF	10120773-101LF	10120759-101LF	10119886-111LF
10120758-101LF	10120757-101LF	10124451-101LF	10124471-101LF	10124432-101LF	10135290-10PLF
10135290-10ALF	10135308-10PLF	10135308-10ALF	10135260-10PLF	10135268-10PLF	10135287-10ALF
10135287-10PLF	10135293-10ALF	10135293-10PLF	10135305-10ALF	10135305-10PLF	10135311-10PLF
10135621-101LF	10135262-10PLF	10135265-10PLF	10135271-10PLF	10135274-10PLF	10135281-10PLF
10135281-10ALF	10135300-101LF	10135284-10PLF	10135314-10PLF	10135314-10ALF	10135278-10ALF
10135278-10PLF	10135296-101LF	10135317-10PLF	10135317-10ALF	10135320-10PLF	10135320-10ALF
10130531-101LF	10130570-101LF	10130563-101LF	10130530-101LF	10135262-10ALF	10135311-10ALF
10130519-101LF	10130521-101LF	10130562-101LF	10130569-101LF	10135590-101LF	10135284-10ALF
10135274-10ALF	10130564-101LF	10124864-101LF	10129146-101LF	10124474-102LF	10135262-10CLF
10135262-10JLF	10135262-10YLF	10135271-10JLF	10135274-10JLF	10135260-10JLF	10135260-10YLF
10135634-101LF	10135293-10YLF	10135284-10JLF	10135314-10JLF	10150869-101LF	10135320-10YLF
10135305-10YLF	10135293-10JLF	10150865-101LF	10135317-10YLF	10135308-10JLF	10135314-10YLF
10135308-10YLF	10135290-10JLF	10135265-10JLF	10135274-10YLF	10135278-10JLF	10135320-10JLF
10135305-10JLF	10150867-101LF	10135290-10YLF	10135287-10YLF		