

STACKABLE PANEL MOUNT FUSE HOLDER

with Wire Leads for ATO® Style Blade Fuse



Description

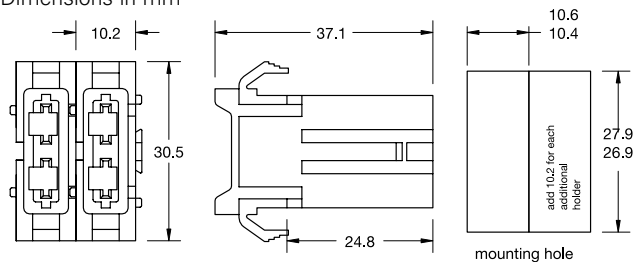
Intended for use with 32V ATO®/ FKS Fuses rated up to 20A or 30A.

Ordering Information

Part Number	Package Size
01550xxxLXN	50
01550xxxZ	100

Dimensions

Dimensions in mm



Ratings

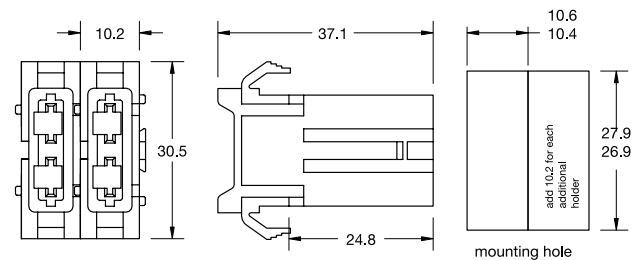
Part Number	Description	Fuse Rating
01550300_	14AWG/2.1mm ² stranded black wire	20 A
01550400_	10AWG/5.3mm ² stranded orange wire	30 A

ATO® PANEL MOUNT HOLDER COMPONENTS



Dimensions

Dimensions in mm



Ratings

Part Number	Description	Fuse Rating
868-062-000	Housing only, color black - 2700 pcs.	-
913-008	Reeled Terminals A, wire 14AWG/2.1mm ² -2000 pcs.	20A
913-008-001	Singe Terminals A, wire 14AWG/2.1mm ² -1000 pcs.	20A
913-007	Reeled Terminals B, wire 10AWG/5.3mm ² - 2000 pcs.	30A
913-007-001	Singe Terminals B, wire 10AWG/5.3mm ² -1000 pcs.	30A

Mouser Electronics

Authorized Distributor

Click to View Pricing, Inventory, Delivery & Lifecycle Information:

Littelfuse:

[913-043](#) [913-042](#) [868-062-000](#) [0913042001](#) [913-008](#) [913-007](#) [04450707H](#) [01550315ZXA](#) [01550430ZXU](#)
[01550430ZXA](#) [01550320ZXU](#) [01550400Z](#) [01550425ZXA](#) [01550320ZXA](#) [01550305ZXA](#) [01550304ZXA](#)
[01550303ZXA](#) [01550310ZXA](#) [01550300Z](#) [913-007-001](#) [04450718ZX900](#) [0913043001](#) [08680062H](#) [01550300LXN](#)