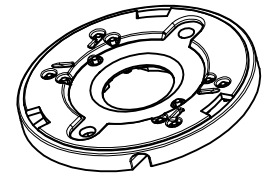
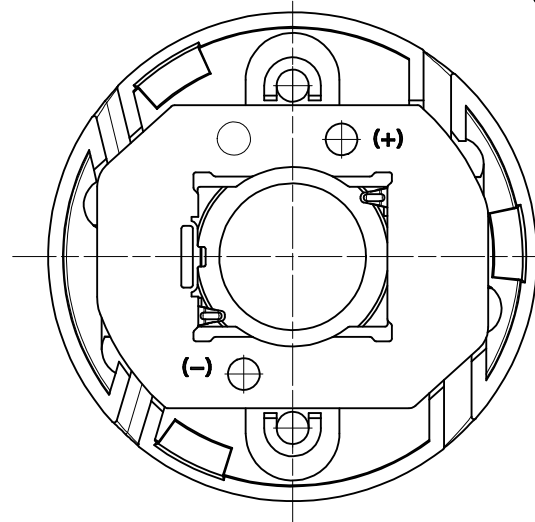
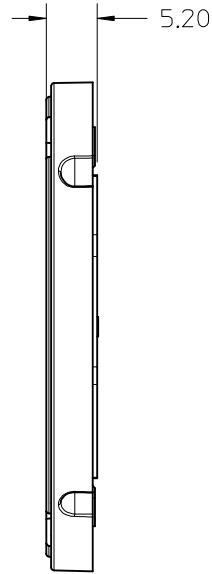
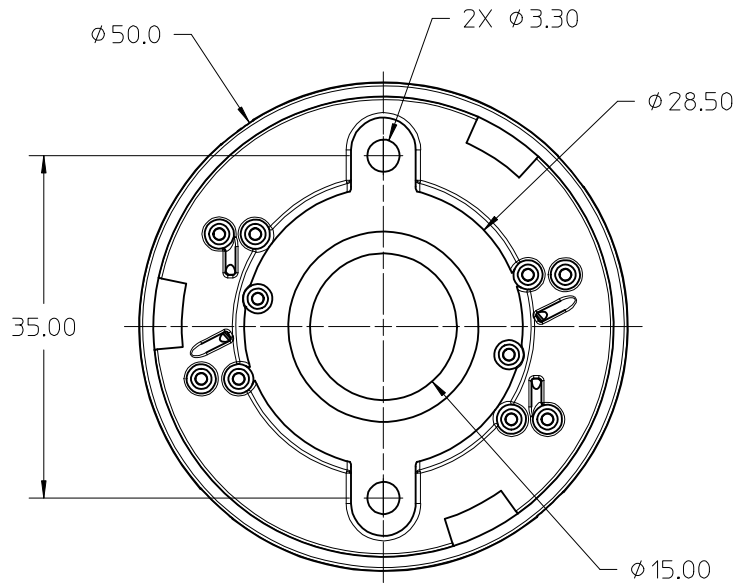


P/N 180580-0004 HOLDER WITHOUT LENS ATTACH FEATURES

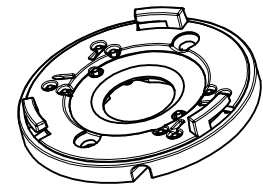


ISO TOP VIEW
SCALE 1:1

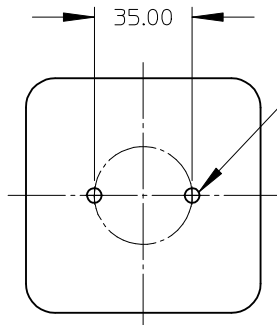
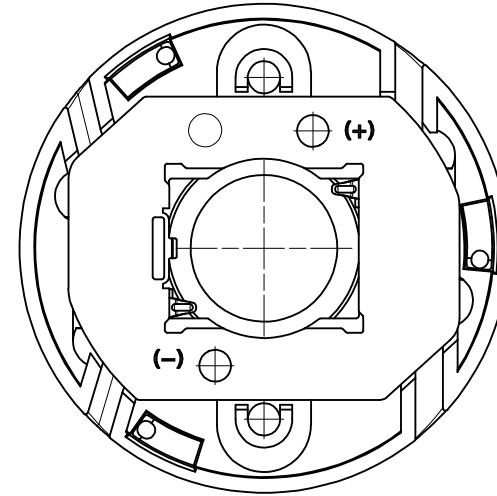
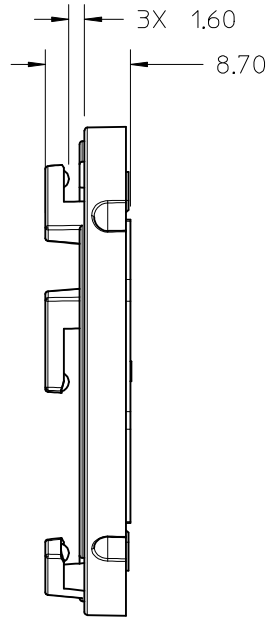
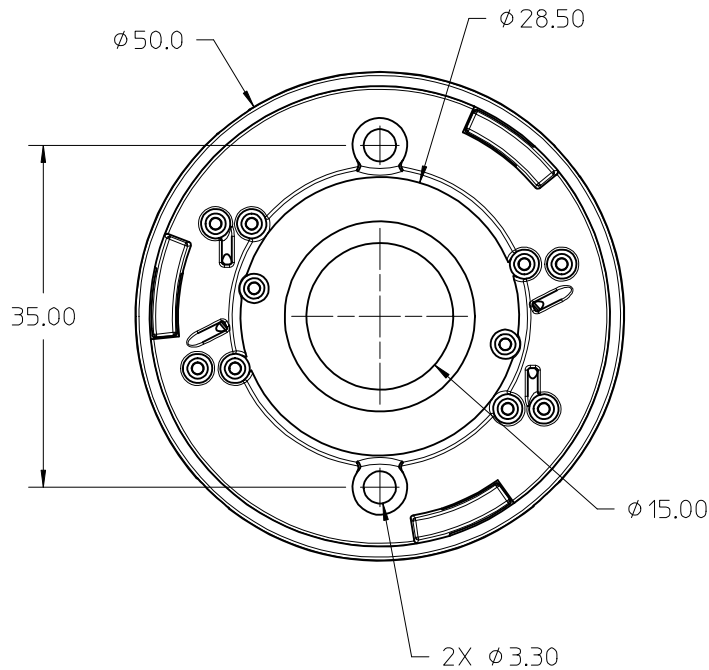
- 1) MATERIALS: COVER: PBT 30% GF, COLOR: WHITE, UL94V-0
HOUSING: PBT 30% GF, COLOR: WHITE, UL94V-0
- 2) WIRE TRAP TERMINALS: COPPER ALLOY
FINISH: LED CONTACT: GOLD OVER NICKEL,
WIRE TRAP: TIN OVER NICKEL.
- 3) APPLICABLE WIRE GAUGE - 18, 20, OR 22 AWG
 - a. SOLID WIRE IS PREFERRED
 - b. PRE-TINNED STRANDED WIRE IS ACCEPTABLE
 - c. 1 cm +2.00/-0.00cm STRIP LENGTH IS RECOMMENDED
- 4) MOUNT HOLDER USING M3 OR 4-40 SCREWS (2),
0.2 NEWTON METER MIN 0.4 NEWTON METER MAX TORQUE.
- 5) UL:OLFB2 UL496 FILE: E345583.

ENTER DESCRIPTION EC NO: SSL2017-0012 DRWNLZABJANOVSKI 2016/08/16 CHKD: APPR:GMEYER 2016/09/21 REV B2	QUALITY SYMBOLS	GENERAL TOLERANCES (UNLESS SPECIFIED)		DIMENSION STYLE MM ONLY		SCALE 2:1	DESIGN UNITS METRIC	THIRD ANGLE PROJECTION	
	▽=0	mm	INCH	DRAWN BY MCOLE	DATE 2013/08/21	TITLE COB HOLDER ASSEMBLY 19.0MM X 16.0MM ZHAGA STYLE COVER ASSY molex			
	▽=0	4 PLACES ±---	±---	CHECKED BY	DATE				
	▽=0	3 PLACES ±---	±---	GMEYER	2014/05/06	MATERIAL NO. 1805800004	DOCUMENT NO. SD-180580-004	SHEET NO. 1 OF 4	THIS DRAWING CONTAINS INFORMATION THAT IS PROPRIETARY TO MOLEX INCORPORATED AND SHOULD NOT BE USED WITHOUT WRITTEN PERMISSION
▽=0	2 PLACES ±0.13	±---	APPROVED BY		DRAFT WHERE APPLICABLE MUST REMAIN WITHIN DIMENSIONS				

P/N 180580-0005 HOLDER WITH LENS ATTACH FEATURES



ISO VIEW TOP
SCALE 1:1

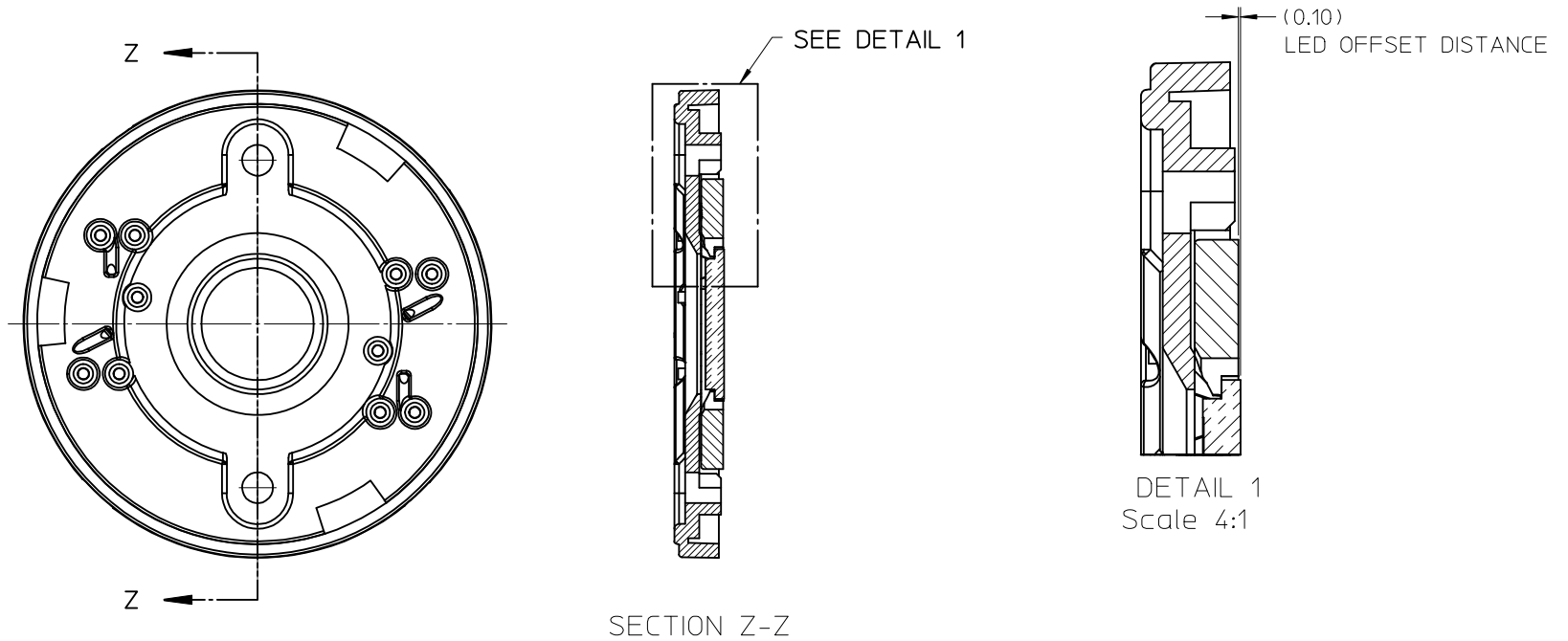


M3 OR 4-40 TAPPED HOLES (2)
TORQUE SCREWS 0.2-0.4 NEWTON METERS MAX.

RECOMMENDED MOUNTING DIMENSIONS (NTS)

ENTER DESCRIPTION EC NO: SSL2017-0012 DRWNL:ZAB.JANOVSKI 2016/08/16 CHKD: APPR:GMEYER 2016/09/21 B2	QUALITY SYMBOLS ∇=0 ∇=0 ∇=0	GENERAL TOLERANCES (UNLESS SPECIFIED)		DIMENSION STYLE MM ONLY		SCALE 2:1	DESIGN UNITS METRIC	THIRD ANGLE PROJECTION		
		4 PLACES	± ---	± ---	DRAWN BY	DATE	TITLE COB HOLDER ASSEMBLY 19.0MM X 16.0MM ZHAGA STYLE COVER ASSY			
		3 PLACES	± ---	± ---	MCOLE	2013/08/21				
		2 PLACES	± 0.13	± ---	CHECKED BY	DATE	DOCUMENT NO. SD-180580-004			
1 PLACE	± 0.25	± ---	GMEYER	2014/05/06						
0 PLACE	± ---	± ---	APPROVED BY	DATE	MATERIAL NO. 1805800005		SHEET NO. 2 OF 4			
ANGULAR ±1/2° DRAFT WHERE APPLICABLE MUST REMAIN WITHIN DIMENSIONS		THIS DRAWING CONTAINS INFORMATION THAT IS PROPRIETARY TO MOLEX INCORPORATED AND SHOULD NOT BE USED WITHOUT WRITTEN PERMISSION								

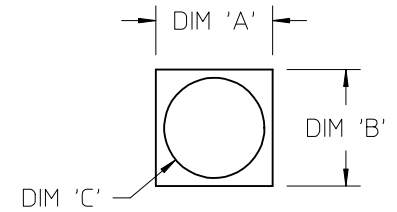
ILLUSTRATION OF HOLDER WITH LED ATTACHED



ENTER DESCRIPTION EC NO: SSL2017-0012 DRAWN: ZAB.JANOVSKI 2016/08/16 CHKD: APPR: GMEYER 2016/09/21 REV B2	QUALITY SYMBOLS $\nabla F/0$ $\nabla F/0$ $\nabla F/0$	GENERAL TOLERANCES (UNLESS SPECIFIED) <table border="1"> <thead> <tr> <th></th> <th>mm</th> <th>INCH</th> </tr> </thead> <tbody> <tr> <td>4 PLACES</td> <td>\pm---</td> <td>\pm---</td> </tr> <tr> <td>3 PLACES</td> <td>\pm---</td> <td>\pm---</td> </tr> <tr> <td>2 PLACES</td> <td>± 0.13</td> <td>\pm---</td> </tr> <tr> <td>1 PLACE</td> <td>± 0.25</td> <td>\pm---</td> </tr> <tr> <td>0 PLACE</td> <td>\pm---</td> <td>\pm---</td> </tr> </tbody> </table>		mm	INCH	4 PLACES	\pm ---	\pm ---	3 PLACES	\pm ---	\pm ---	2 PLACES	± 0.13	\pm ---	1 PLACE	± 0.25	\pm ---	0 PLACE	\pm ---	\pm ---	DIMENSION STYLE MM ONLY DRAWN BY DATE MCOLE 2013/08/21 CHECKED BY DATE GMEYER 2014/05/06 APPROVED BY DATE	SCALE 2:1 DESIGN UNITS METRIC THIRD ANGLE PROJECTION	TITLE COB HOLDER ASSEMBLY 19.0MM X 16.0MM ZHAGA STYLE COVER ASSY
		mm	INCH																				
	4 PLACES	\pm ---	\pm ---																				
	3 PLACES	\pm ---	\pm ---																				
2 PLACES	± 0.13	\pm ---																					
1 PLACE	± 0.25	\pm ---																					
0 PLACE	\pm ---	\pm ---																					
MATERIAL NO. 1805800004	DOCUMENT NO. SD-180580-004	SHEET NO. 3 OF 4																					
ANGULAR $\pm 1/2^\circ$ DRAFT WHERE APPLICABLE MUST REMAIN WITHIN DIMENSIONS			THIS DRAWING CONTAINS INFORMATION THAT IS PROPRIETARY TO MOLEX INCORPORATED AND SHOULD NOT BE USED WITHOUT WRITTEN PERMISSION																				
SIZE B			THIS DRAWING CONTAINS INFORMATION THAT IS PROPRIETARY TO MOLEX INCORPORATED AND SHOULD NOT BE USED WITHOUT WRITTEN PERMISSION																				

10 9 8 7 6 5 4 3 2 1

COB MFG.	TYPE	DIM. 'A'	DIM. 'B'	THK.	DIM. 'C'
NICHIA	NVC*L024*	19.0	16.0	1.0	13.0
NICHIA	NFC*L036B*	19.0	16.0	1.0	10.7
NICHIA	NFC*L060B-V*	19.0	16.0	1.0	13.5
LUMILEDS	LUXEON 1202/1203	19.0	16.0	1.0	11.3
SAMSUNG	LC040C	19.0	16.0	1.0	12.6

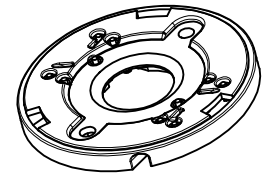
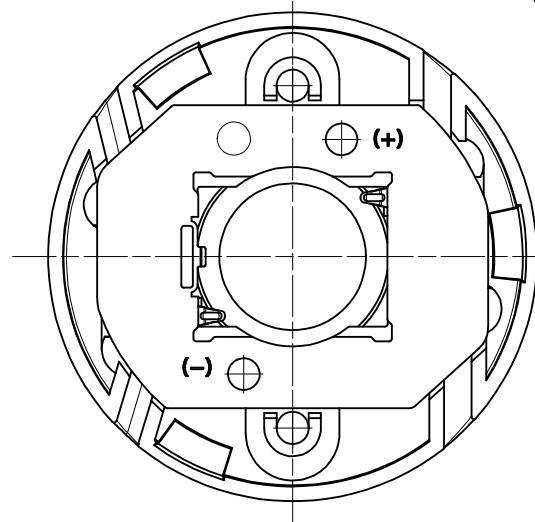
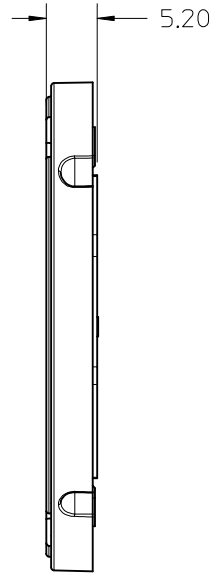
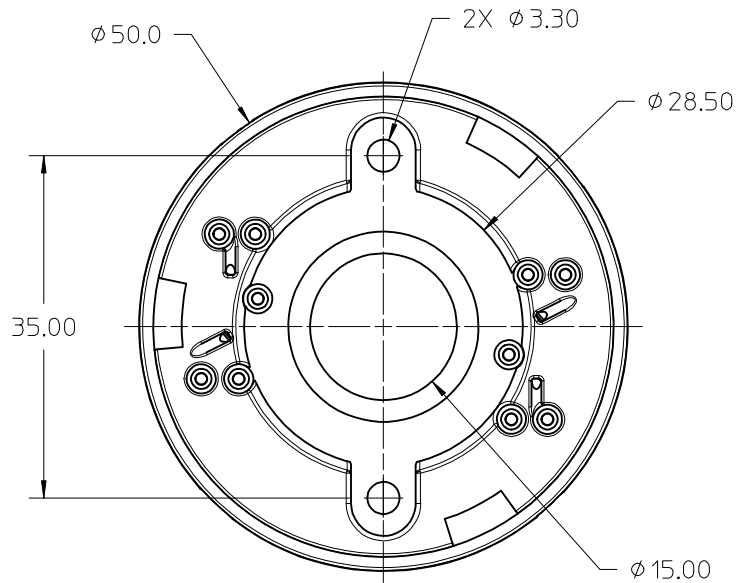


COB LED
SCALE 1:1

ENTER DESCRIPTION EC NO: SSL2017-0012 DRWNL:ZAB.JANOVSKI 2016/08/16 CHKD: APPR:GMEYER 2016/09/21	QUALITY SYMBOLS	GENERAL TOLERANCES (UNLESS SPECIFIED)		DIMENSION STYLE MM ONLY		SCALE 2:1	DESIGN UNITS METRIC	THIRD ANGLE PROJECTION		
	REV DESCRIPTION B2	▼=0 ▽=0	4 PLACES	± --- ± ---	mm	INCH	DRAWN BY MCOLE	DATE 2013/08/21	TITLE COB HOLDER ASSEMBLY 19.0MM X 16.0MM ZHAGA STYLE COVER ASSY	
			3 PLACES	± --- ± ---			CHECKED BY	DATE		
			2 PLACES	± 0.13 ± ---			GMEYER	2014/05/06		
			1 PLACE	± 0.25 ± ---			APPROVED BY	DATE	MATERIAL NO. 1805800005	
0 PLACE			± --- ± ---					DOCUMENT NO. SD-180580-004		
		ANGULAR ±1/2°		DRAFT WHERE APPLICABLE MUST REMAIN WITHIN DIMENSIONS		THIS DRAWING CONTAINS INFORMATION THAT IS PROPRIETARY TO MOLEX INCORPORATED AND SHOULD NOT BE USED WITHOUT WRITTEN PERMISSION				

9 8 7 6 5 4 3 2 1

P/N 180580-0004 HOLDER WITHOUT LENS ATTACH FEATURES

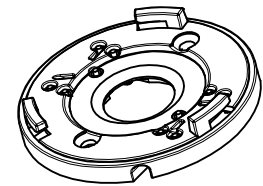


ISO TOP VIEW
SCALE 1:1

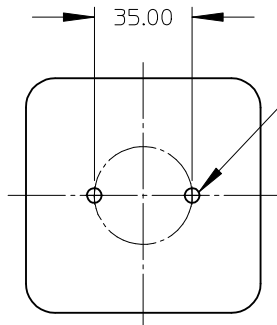
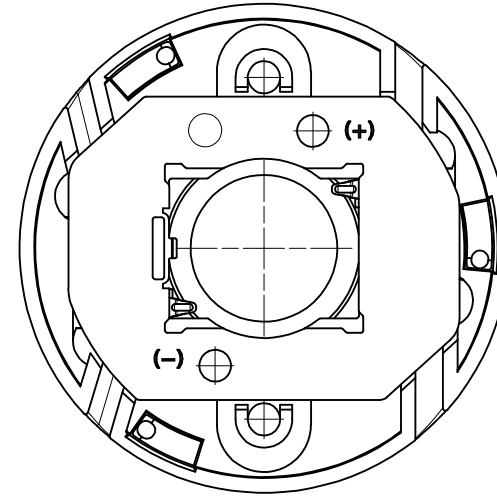
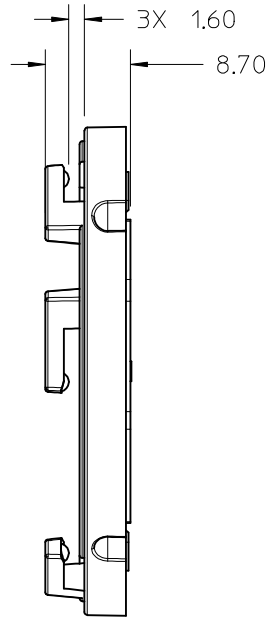
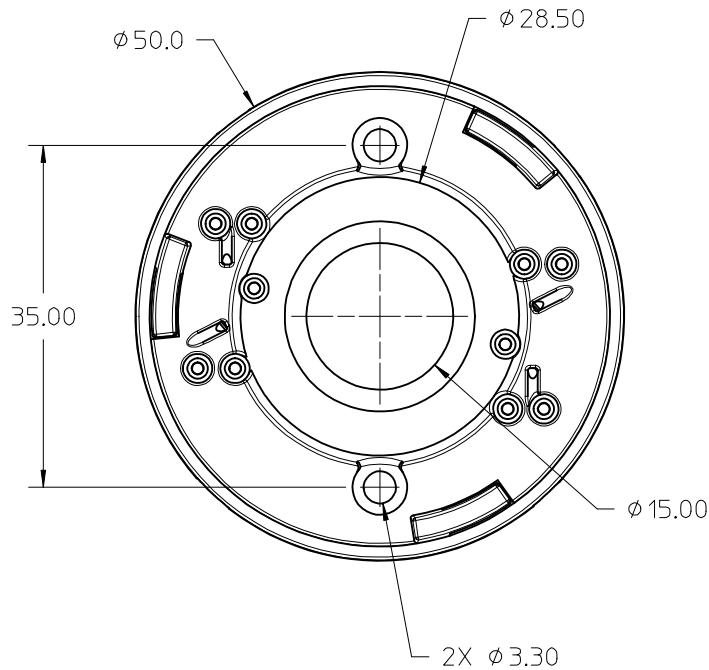
- 1) MATERIALS: COVER: PBT 30% GF, COLOR: WHITE, UL94V-0
HOUSING: PBT 30% GF, COLOR: WHITE, UL94V-0
- 2) WIRE TRAP TERMINALS: COPPER ALLOY
FINISH: LED CONTACT: GOLD OVER NICKEL,
WIRE TRAP: TIN OVER NICKEL.
- 3) APPLICABLE WIRE GAUGE - 18, 20, OR 22 AWG
 - a. SOLID WIRE IS PREFERRED
 - b. PRE-TINNED STRANDED WIRE IS ACCEPTABLE
 - c. 1 cm +2.00/-0.00cm STRIP LENGTH IS RECOMMENDED
- 4) MOUNT HOLDER USING M3 OR 4-40 SCREWS (2),
0.2 NEWTON METER MIN 0.4 NEWTON METER MAX TORQUE.
- 5) UL:OLFB2 UL496 FILE: E345583.

ENTER DESCRIPTION EC NO: SSL2017-0012 DRWNLZABJANOVSKI 2016/08/16 CHKD: APPR:GMEYER 2016/09/21 REV B2	QUALITY SYMBOLS	GENERAL TOLERANCES (UNLESS SPECIFIED)		DIMENSION STYLE MM ONLY		SCALE 2:1	DESIGN UNITS METRIC	THIRD ANGLE PROJECTION	
	▽=0	mm	INCH	DRAWN BY MCOLE	DATE 2013/08/21	TITLE COB HOLDER ASSEMBLY 19.0MM X 16.0MM ZHAGA STYLE COVER ASSY molex			
	▽=0	4 PLACES ±---	±---	CHECKED BY	DATE				
	▽=0	3 PLACES ±---	±---	GMEYER	2014/05/06	MATERIAL NO. 1805800004	DOCUMENT NO. SD-180580-004	SHEET NO. 1 OF 4	
▽=0	2 PLACES ±0.13	±---	APPROVED BY		THIS DRAWING CONTAINS INFORMATION THAT IS PROPRIETARY TO MOLEX INCORPORATED AND SHOULD NOT BE USED WITHOUT WRITTEN PERMISSION				
		1 PLACE ±0.25	±---						
		0 PLACE ±---	±---						
		ANGULAR ±1/2°							
		DRAFT WHERE APPLICABLE MUST REMAIN WITHIN DIMENSIONS							

P/N 180580-0005 HOLDER WITH LENS ATTACH FEATURES



ISO VIEW TOP
SCALE 1:1

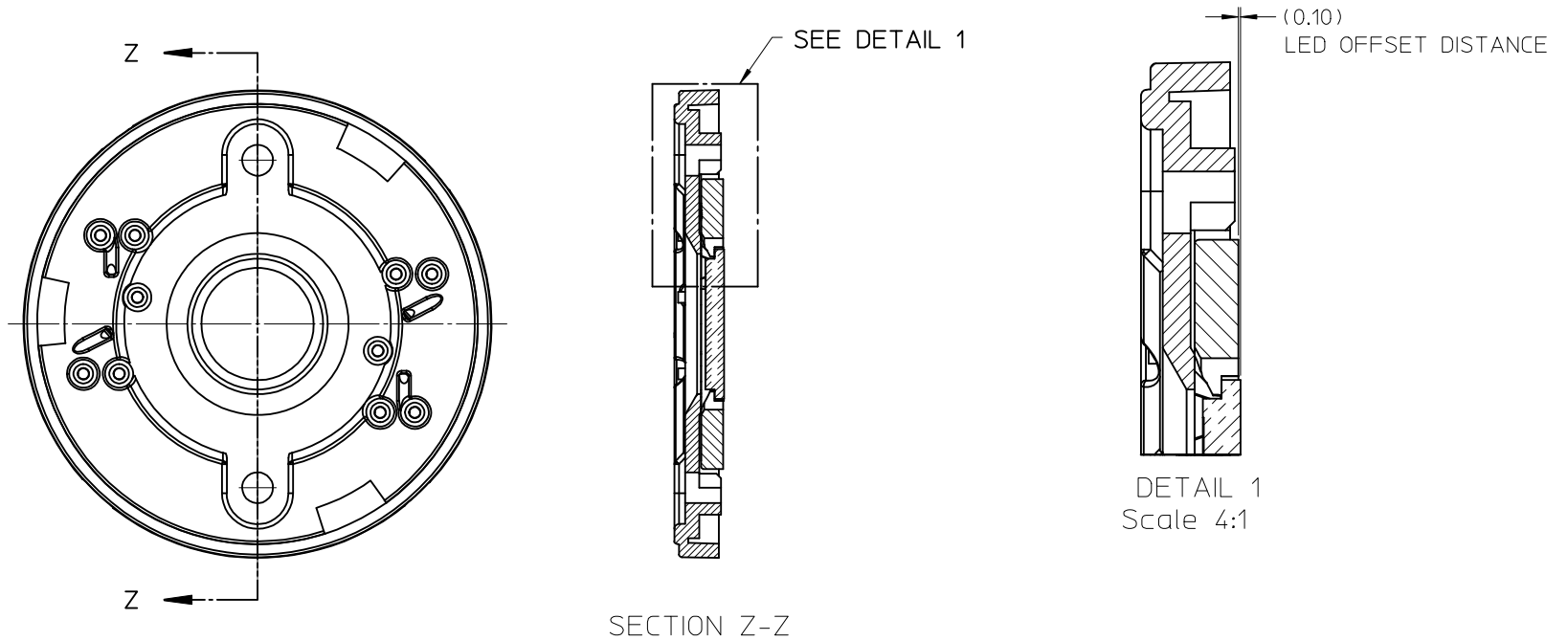


M3 OR 4-40 TAPPED HOLES (2)
TORQUE SCREWS 0.2-0.4 NEWTON METERS MAX.

RECOMMENDED MOUNTING DIMENSIONS (NTS)

ENTER DESCRIPTION EC NO: SSL2017-0012 DRWNL:ZAB.JANOVSKI 2016/08/16 CHKD: APPR:GMEYER 2016/09/21 B2	QUALITY SYMBOLS ▽/0 ▽/0 ▽/0	GENERAL TOLERANCES (UNLESS SPECIFIED)		DIMENSION STYLE MM ONLY		SCALE 2:1	DESIGN UNITS METRIC	THIRD ANGLE PROJECTION		
		4 PLACES ± --- ± ---	mm INCH	DRAWN BY MCOLE	DATE 2013/08/21	TITLE COB HOLDER ASSEMBLY 19.0MM X 16.0MM ZHAGA STYLE COVER ASSY molex				
		3 PLACES ± --- ± ---	2 PLACES ± 0.13 ± ---	CHECKED BY GMEYER	DATE 2014/05/06					
		1 PLACE ± 0.25 ± ---	0 PLACE ± --- ± ---	ANGULAR ± 1/2° DRAFT WHERE APPLICABLE MUST REMAIN WITHIN DIMENSIONS		MATERIAL NO. 1805800005	DOCUMENT NO. SD-180580-004	SHEET NO. 2 OF 4		
				THIS DRAWING CONTAINS INFORMATION THAT IS PROPRIETARY TO MOLEX INCORPORATED AND SHOULD NOT BE USED WITHOUT WRITTEN PERMISSION						

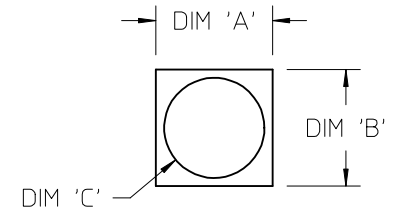
ILLUSTRATION OF HOLDER WITH LED ATTACHED



ENTER DESCRIPTION EC NO: SSL2017-0012 DRAWN: ZAB.JANOVSKI 2016/08/16 CHKD: APPR: GMEYER 2016/09/21 REV	QUALITY SYMBOLS $\nabla F/0$ $\nabla F/0$ $\nabla F/0$	GENERAL TOLERANCES (UNLESS SPECIFIED) <table border="1"> <thead> <tr> <th></th> <th>mm</th> <th>INCH</th> </tr> </thead> <tbody> <tr> <td>4 PLACES</td> <td>\pm---</td> <td>\pm---</td> </tr> <tr> <td>3 PLACES</td> <td>\pm---</td> <td>\pm---</td> </tr> <tr> <td>2 PLACES</td> <td>± 0.13</td> <td>\pm---</td> </tr> <tr> <td>1 PLACE</td> <td>± 0.25</td> <td>\pm---</td> </tr> <tr> <td>0 PLACE</td> <td>\pm---</td> <td>\pm---</td> </tr> </tbody> </table>		mm	INCH	4 PLACES	\pm ---	\pm ---	3 PLACES	\pm ---	\pm ---	2 PLACES	± 0.13	\pm ---	1 PLACE	± 0.25	\pm ---	0 PLACE	\pm ---	\pm ---	DIMENSION STYLE MM ONLY DRAWN BY DATE MCOLE 2013/08/21 CHECKED BY DATE GMEYER 2014/05/06 APPROVED BY DATE	SCALE 2:1 DESIGN UNITS METRIC THIRD ANGLE PROJECTION	TITLE COB HOLDER ASSEMBLY 19.0MM X 16.0MM ZHAGA STYLE COVER ASSY
		mm	INCH																				
	4 PLACES	\pm ---	\pm ---																				
	3 PLACES	\pm ---	\pm ---																				
2 PLACES	± 0.13	\pm ---																					
1 PLACE	± 0.25	\pm ---																					
0 PLACE	\pm ---	\pm ---																					
MATERIAL NO. 1805800004	DOCUMENT NO. SD-180580-004	SHEET NO. 3 OF 4																					
ANGULAR $\pm 1/2^\circ$ DRAFT WHERE APPLICABLE MUST REMAIN WITHIN DIMENSIONS			THIS DRAWING CONTAINS INFORMATION THAT IS PROPRIETARY TO MOLEX INCORPORATED AND SHOULD NOT BE USED WITHOUT WRITTEN PERMISSION																				
B2																							

10 9 8 7 6 5 4 3 2 1

COB MFG.	TYPE	DIM. 'A'	DIM. 'B'	THK.	DIM. 'C'
NICHIA	NVC*L024*	19.0	16.0	1.0	13.0
NICHIA	NFC*L036B*	19.0	16.0	1.0	10.7
NICHIA	NFC*L060B-V*	19.0	16.0	1.0	13.5
LUMILEDS	LUXEON 1202/1203	19.0	16.0	1.0	11.3
SAMSUNG	LC040C	19.0	16.0	1.0	12.6



COB LED
SCALE 1:1

ENTER DESCRIPTION EC NO: SSL2017-0012 DRWNL:ZAB.JANOVSKI 2016/08/16 CHKD: APPR:GMEYER 2016/09/21	QUALITY SYMBOLS	GENERAL TOLERANCES (UNLESS SPECIFIED)		DIMENSION STYLE MM ONLY		SCALE 2:1	DESIGN UNITS METRIC	THIRD ANGLE PROJECTION		
	REV DESCRIPTION B2	=0 =0	4 PLACES	mm	INCH	DRAWN BY	DATE	TITLE COB HOLDER ASSEMBLY 19.0MM X 16.0MM ZHAGA STYLE COVER ASSY		
			3 PLACES	± ---	± ---	MCOLE	2013/08/21			
			2 PLACES	± 0.13	± ---	CHECKED BY	DATE	MATERIAL NO. 1805800005		
			1 PLACE	± 0.25	± ---	GMEYER	2014/05/06			
0 PLACE			± ---	± ---	APPROVED BY	DATE	THIS DRAWING CONTAINS INFORMATION THAT IS PROPRIETARY TO MOLEX INCORPORATED AND SHOULD NOT BE USED WITHOUT WRITTEN PERMISSION			
ANGULAR ±1/2°		DRAFT WHERE APPLICABLE MUST REMAIN WITHIN DIMENSIONS		SIZE B						

9 8 7 6 5 4 3 2 1