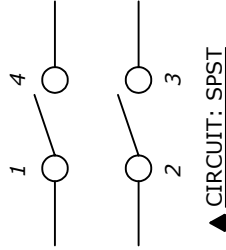
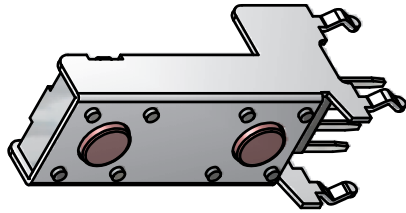
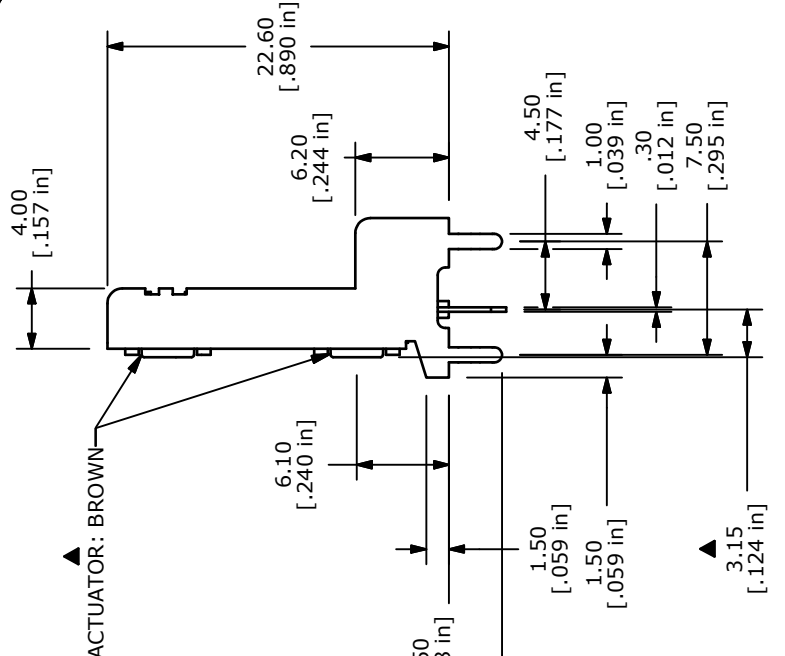
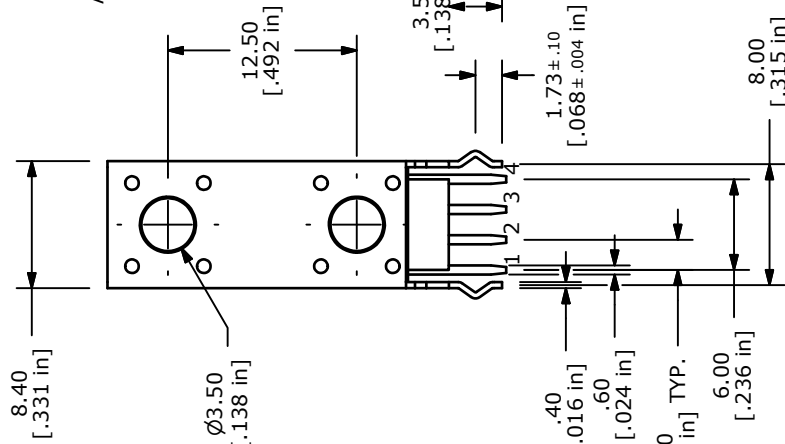
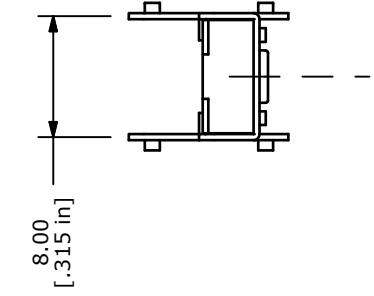


RECOMMENDED P.C.B. LAYOUT



- NOTES:
1. ALL DIMENSIONS IN MM
 2. GENERAL TOLERANCE: X.X=±0.4
X.XX=±0.25
 3. TERM. NOS. FOR REFERENCE ONLY.
 4. CONTACT RATING: 50mA @12VDC
 5. TRAVEL: 0.25 +0.2/-0.1mm
 6. CONTACT RESISTANCE: 100mILLI-OHMS Max.
 7. OPERATING FORCE: 100±50gf **B**
 - ▲8. CONTACT MATERIAL: SILVER
 9. ▲ DENOTES CRITICAL PARAMETER.
 - ▲10. ACTUATOR: 3.15 mm
 - ▲11. PACKAGE: TRAY/ 200 PIECES PER
 12. 2002/95/EC (ROHS) COMPLIANT



		TITLE TL53F100Q		
B	19692	CORRECTED OPERATING FORCE	2/18/11	BGL
A	19630	RELEASED FOR PRODUCTION	1/31/11	BGL
REV	PCR NO	DESCRIPTION	DATE	BY
<small>THE INFORMATION CONTAINED IN THIS DOCUMENT IS PROPRIETARY TO E-SWITCH AND IS NOT TO BE COPIED OR TRANSFERRED</small>				
SCALE 2:1		DATE 1/31/2011	DR BGL	DWG P010693
REV				REV B