



DATA SHEET

GLV92RE0381 Series

Part of the simpleLED® Program

simpleLED® GLV92RE0381 SERIES

The light engine series consist of 4 high power LUXEON® M LEDs. It is engineered to provide customers with the flexibility to select the optimal light source for their applications. Customers also have the option of modifying their light engine by selecting their preferred LUXEON® M LED, optic and/or connector that best suits the application. The module series is complied with IEC62031 Class III, it can connect with UL Class II driver (please confirm with us if any other applications).

FEATURES & BENEFITS

- 3 year manufacturer (GL-Lighting) warranty
- High-reliability LED sources
- Wide operational temperature range
- Multiple configurable options
- Multiple optic options
- Wide range of drive current
- Multiple CCT's available
- 4 LEDs in series
- Short lead time
- Complied with IEC62031, UL-Recognized Components

TYPICAL APPLICATIONS

- Office Lighting
- High Bay
- Poster Box
- Cove Lighting
- Wall Wash
- Under-Cabinet

simpleLED® GLV92RE0381 WHITE SERIES

* with conformal coating

PARAMETER		CONDITIONS
PCB		MPCPB
Finish		White
Size		L 140mm x W 38mm
Connector	00	Solder Pad
	20	20cm UL1007 20Awg Solid Wire
	CW	Wago 2060-802/998-404
Thermal Resistance (p-n junction to Tp)		Rth= 1.25 °C/W (MPCPB)
Thermal Resistance (p-n junction to the back of PCB)		0.0192°C/W
Tp Maximum Temperature		≤85 °C

PERFORMANCE SPECIFICATIONS (@Tp*=85°C, Io=700mA)

SOURCE TYPE		LUXEON® LXR7 x 4									
CRI		Min.70									
CCT		3000K		4000K		5000K		5700K		6500K	
Typical Light Output (lm)		Min.	Typ.	Min.	Typ.	Min.	Typ.	Min.	Typ.	Min.	Typ.
		3200	3450	3600	3850	3600	3900	3600	3900	3600	3900
Efficacy (lm/w)	Min.	95	102	107	114	107	116	107	116	107	116
	Typ.	102	110	114	122	114	124	114	124	114	124
	Max.	108	117	122	130	122	132	122	132	122	132

SOURCE TYPE		LUXEON® LXR8 x 4									
CRI		Min.80									
CCT		2700K		3000K		3500K		4000K		5000K	
Typical Light Output (lm)		Min.	Typ.	Min.	Typ.	Min.	Typ.	Min.	Typ.	Min.	Typ.
		2700	2950	2900	3150	2900	3200	3100	3350	3100	3400
Efficacy (lm/w)	Min.	80	87	86	93	86	95	92	99	92	101
	Typ.	86	94	92	100	92	102	98	106	98	108
	Max.	91	100	98	107	98	108	105	113	105	115

ELECTRICAL CHARACTERISTICS

PARAMETER	MIN	TYPICAL	MAX
Forward Voltage (V)	42	44.8	48
Power Consumption @700mA (W)	29.4	31.36	33.6

Driving Current	100mA	700mA	1050mA
-----------------	-------	-------	--------

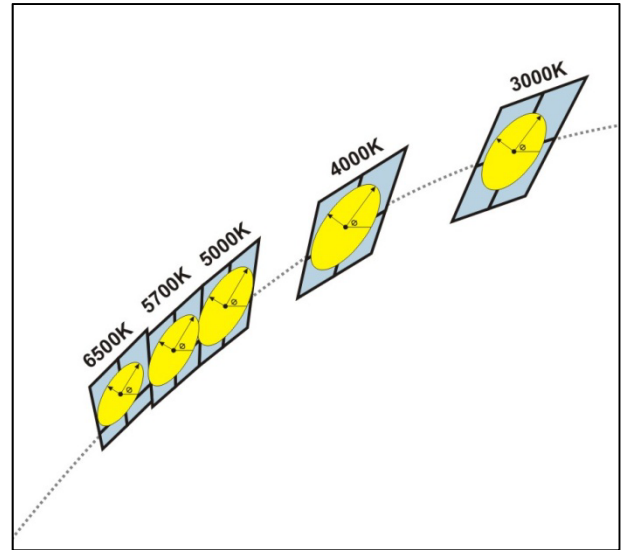
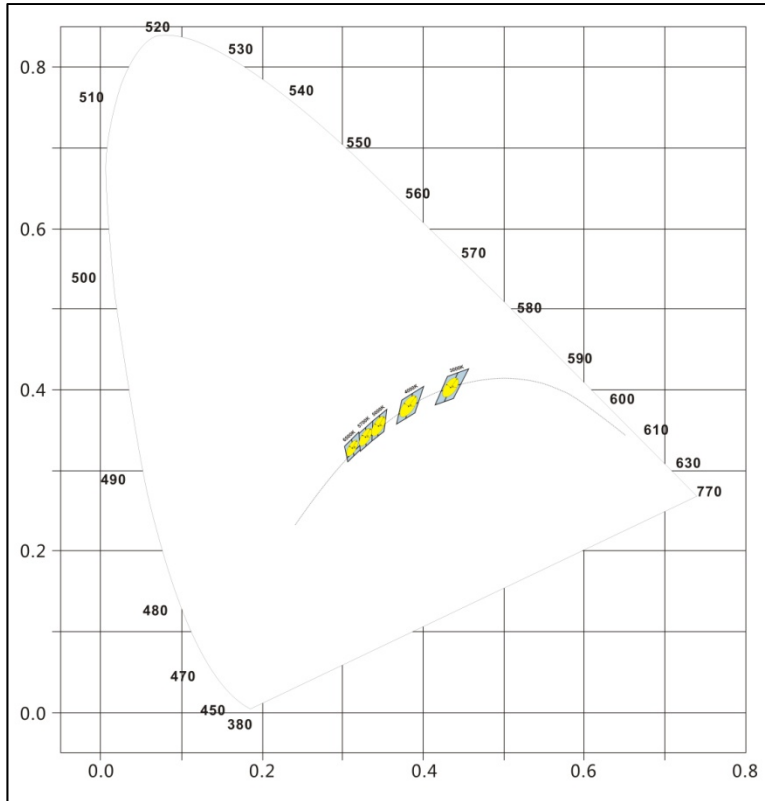
ENVIRONMENTAL CHARACTERISTICS

PARAMETER	MIN	MAX
Storage Temperature (°C)	-40	+85
Tp Temperature (°C)	-40	+85

*At pulse test conditions, Tp = Tj =85°C

Note: All specifications are subject to change without notice.

CHROMATICITY DIAGRAM



-  - ANSI Binning Area
 -  - 5-step MacAdam Ellipse White Color Bin Definition
- for LXR7-SW**

3000K* ANSI		4000K* ANSI		5000K* ANSI		5700K* ANSI		6500K* ANSI	
x	y	x	y	x	y	x	y	x	y
0.4299	0.4165	0.3736	0.3874	0.3376	0.3616	0.3207	0.3462	0.3028	0.3304
0.4562	0.4260	0.4006	0.4044	0.3551	0.3760	0.3376	0.3616	0.3205	0.3481
0.4147	0.3814	0.3670	0.3578	0.3366	0.3369	0.3222	0.3243	0.3068	0.3113
0.4373	0.3893	0.3898	0.3716	0.3515	0.3487	0.3366	0.3369	0.3221	0.3261

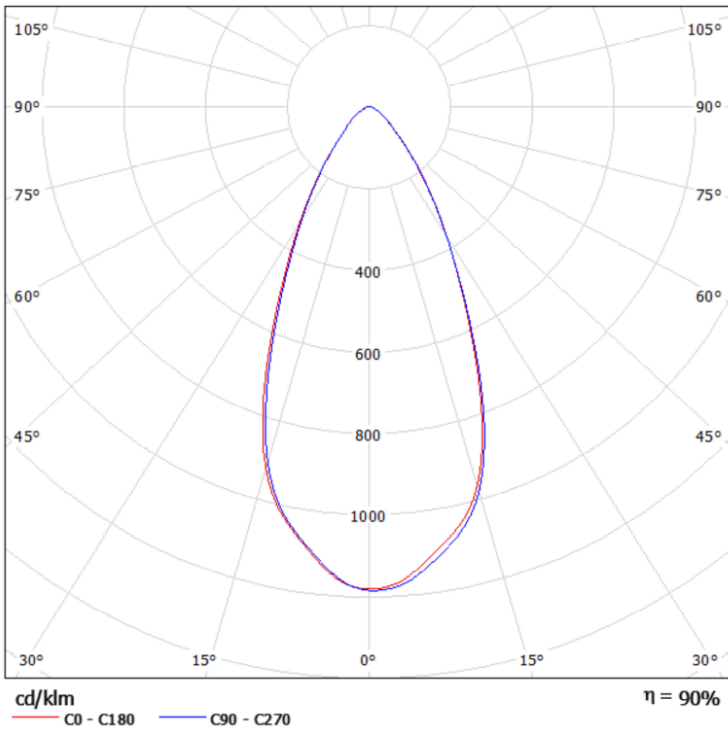
Color consistency targeting a Single 5-step MacAdam Ellipse

Part Number	Nominal ANSI CCT	Center Point (cx,cy)	Major Axis,a	Minor Axis,b	Ellipse Rotation Angle (Degrees)
LXR7-SW30	3000K	0.4338,0.4030	0.01390	0.00680	53.22
LXR7-SW40	4000K	0.3818,0.3797	0.01565	0.00670	53.72
LXR7-SW50	5000K	0.3447,0.3553	0.01370	0.00590	59.62
LXR7-SW57	5700K	0.3287,0.3417	0.01243	0.00533	59.09
LXR7-SW65	6500K	0.3123,0.3282	0.01115	0.00475	58.57

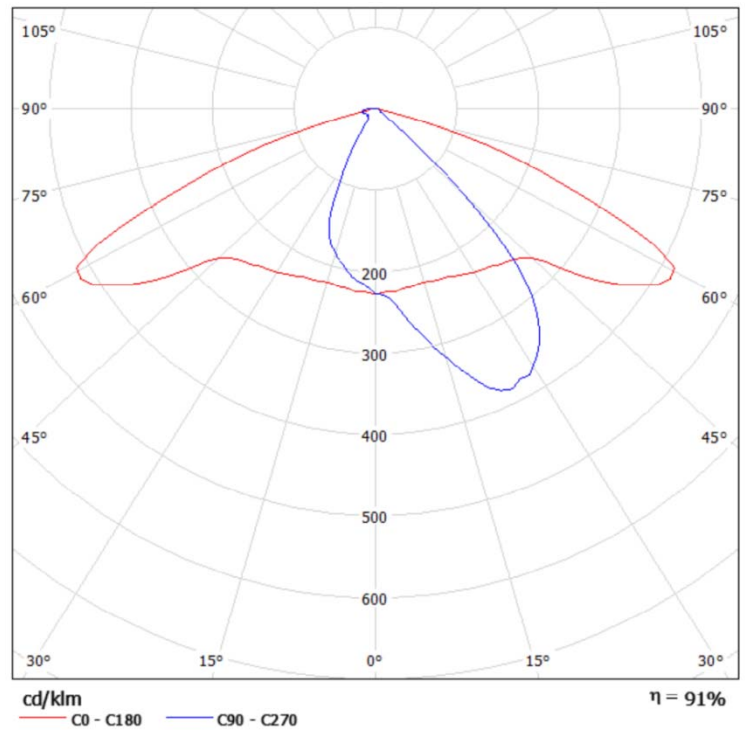
* The tolerances of the x,y coordinates. +/- 0.01

Note: All specifications are subject to change without notice.

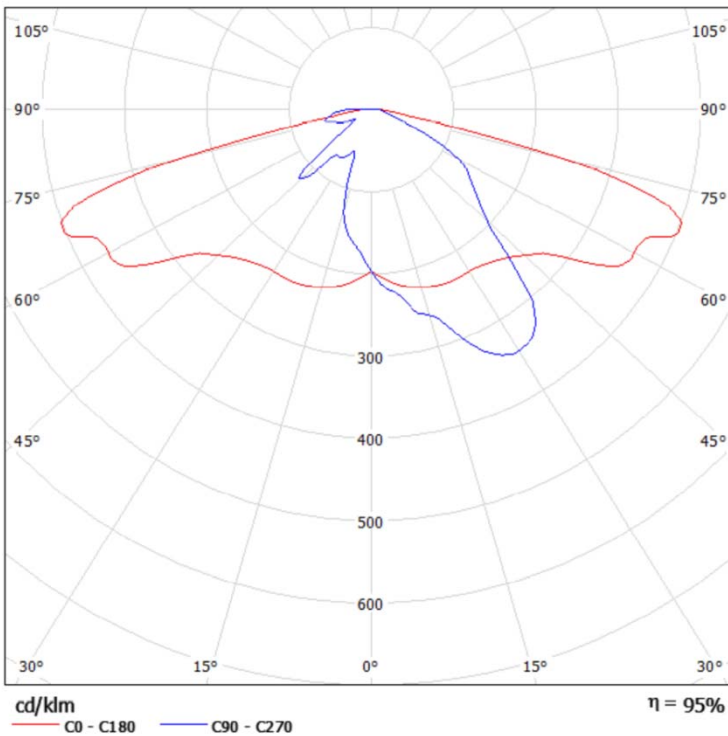
RELATIVE INTENSITY



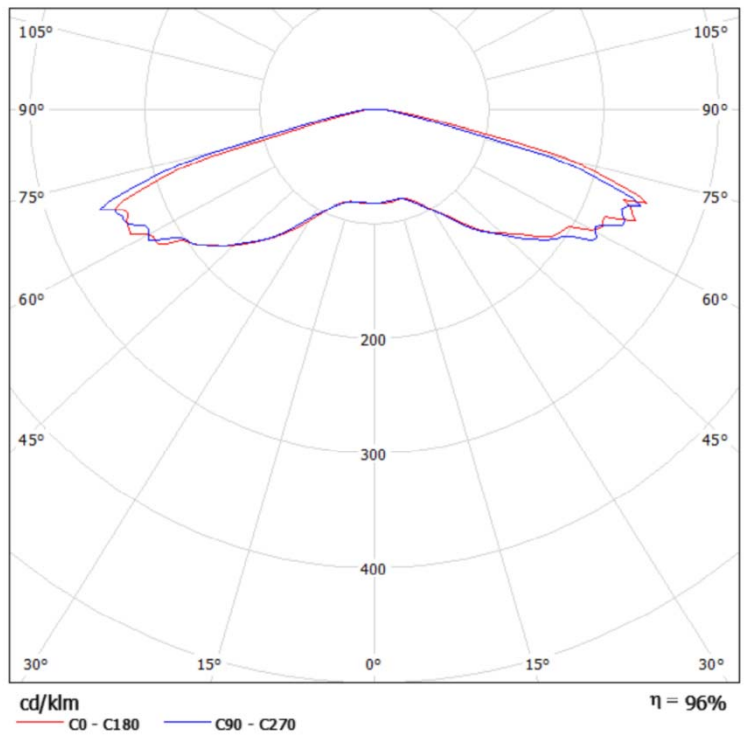
OLW



OLC



OLA



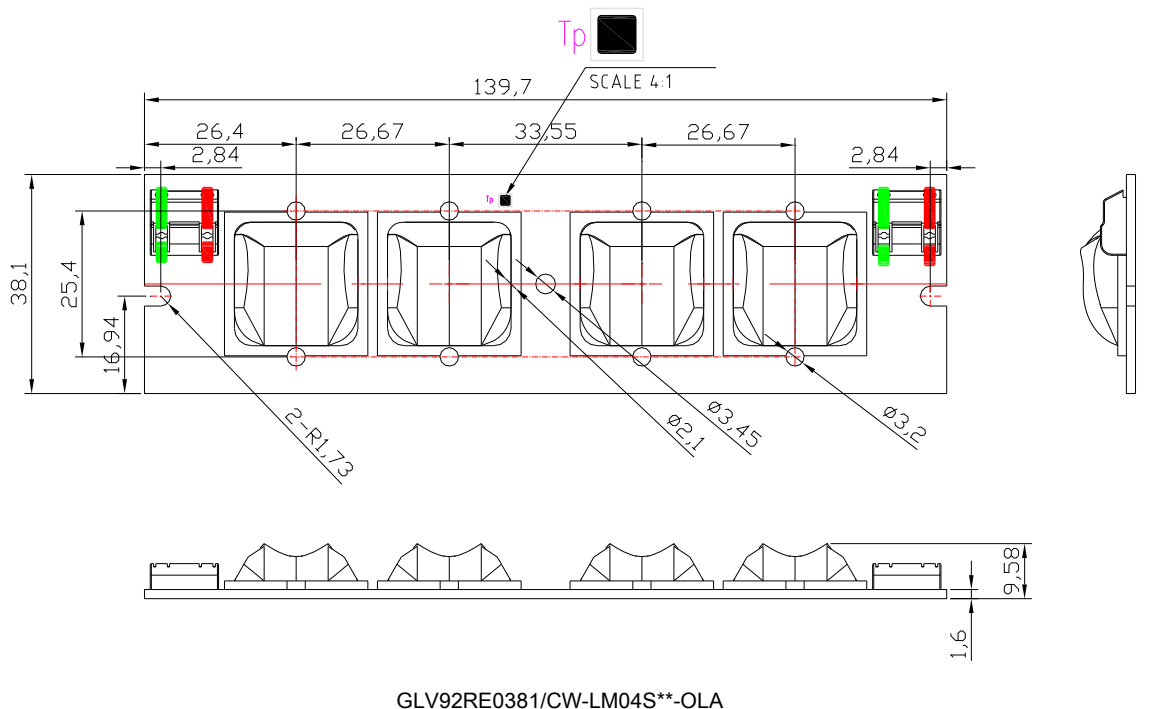
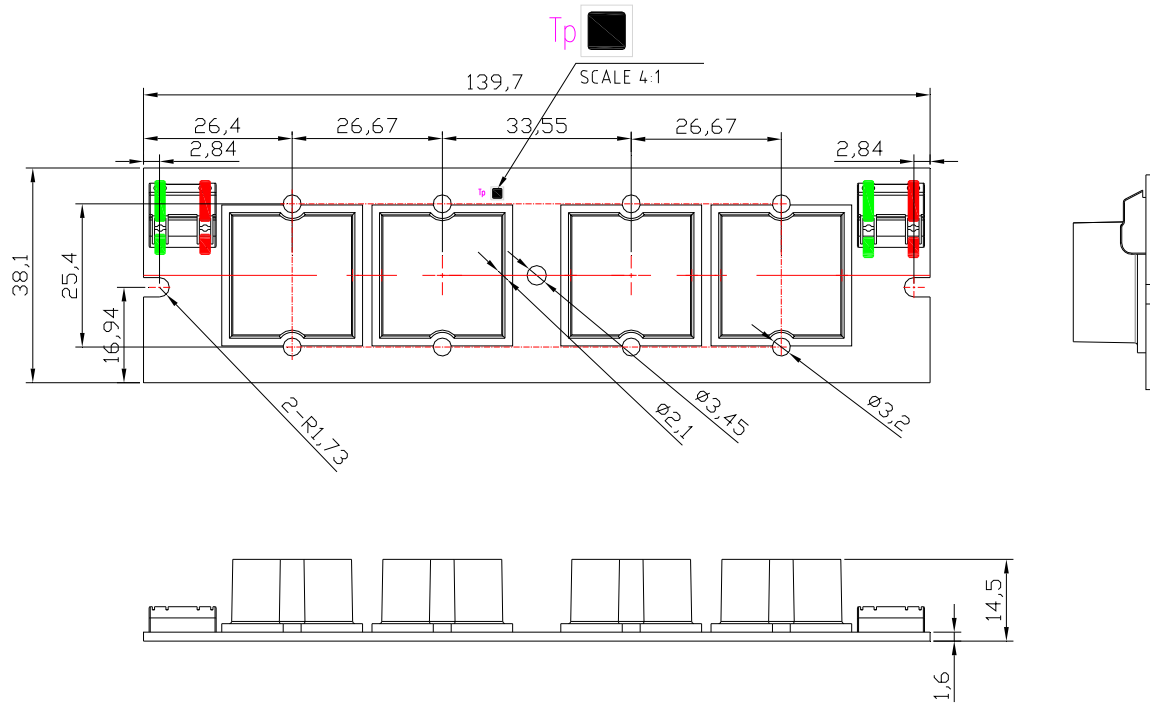
OLV

Note: All specifications are subject to change without notice.

MECHANICAL DRAWINGS (GLV92RE0381 / MCPCB)

2D drawing with dimensions:

(Unit: mm)



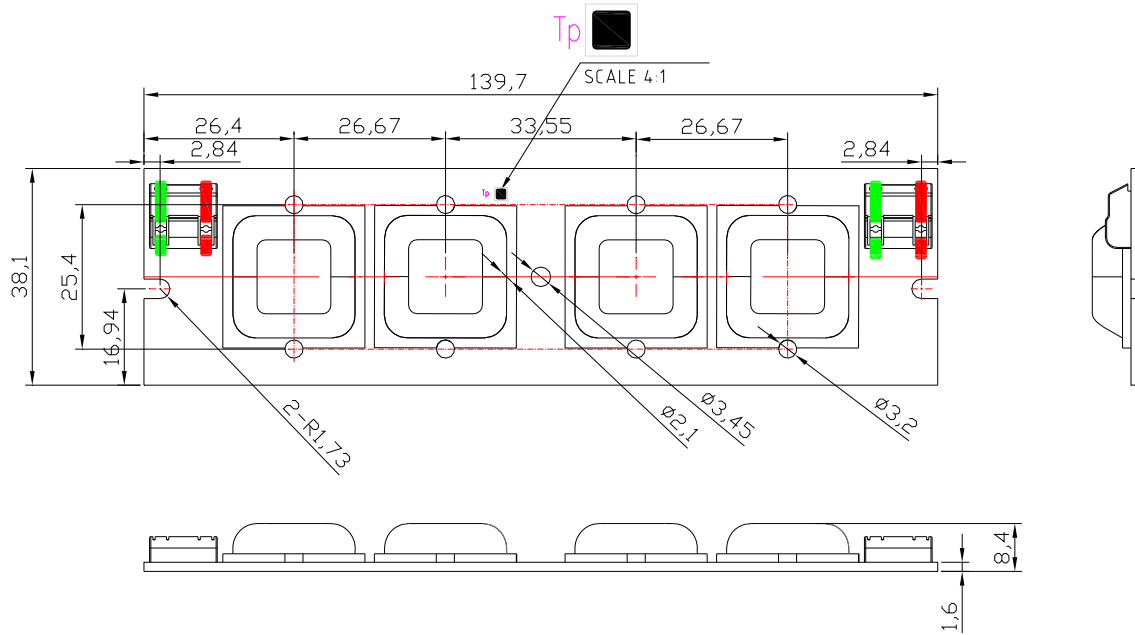
* M3 Screw / Torque 3.0kgf.cm

Note: All specifications are subject to change without notice.

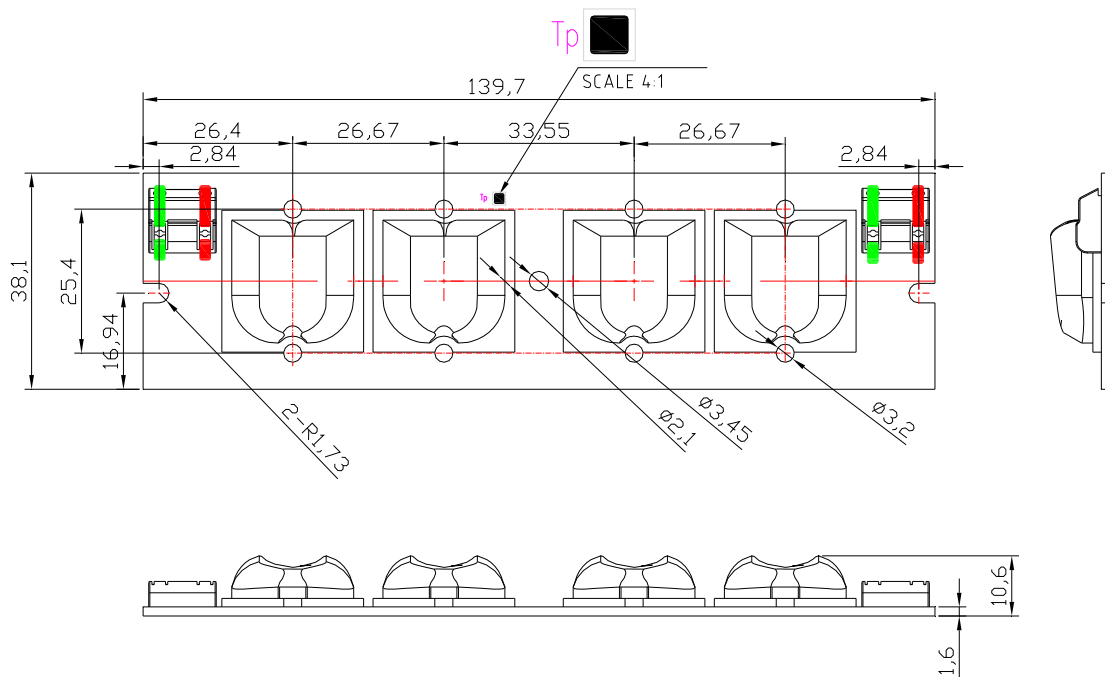
MECHANICAL DRAWINGS (GLV92RE0381 / MCPCB)

2D drawing with dimensions:

(Unit: mm)



GLV92RE0381/CW-LM04S**-OLV



GLV92RE0381/CW-LM04S**-OLC

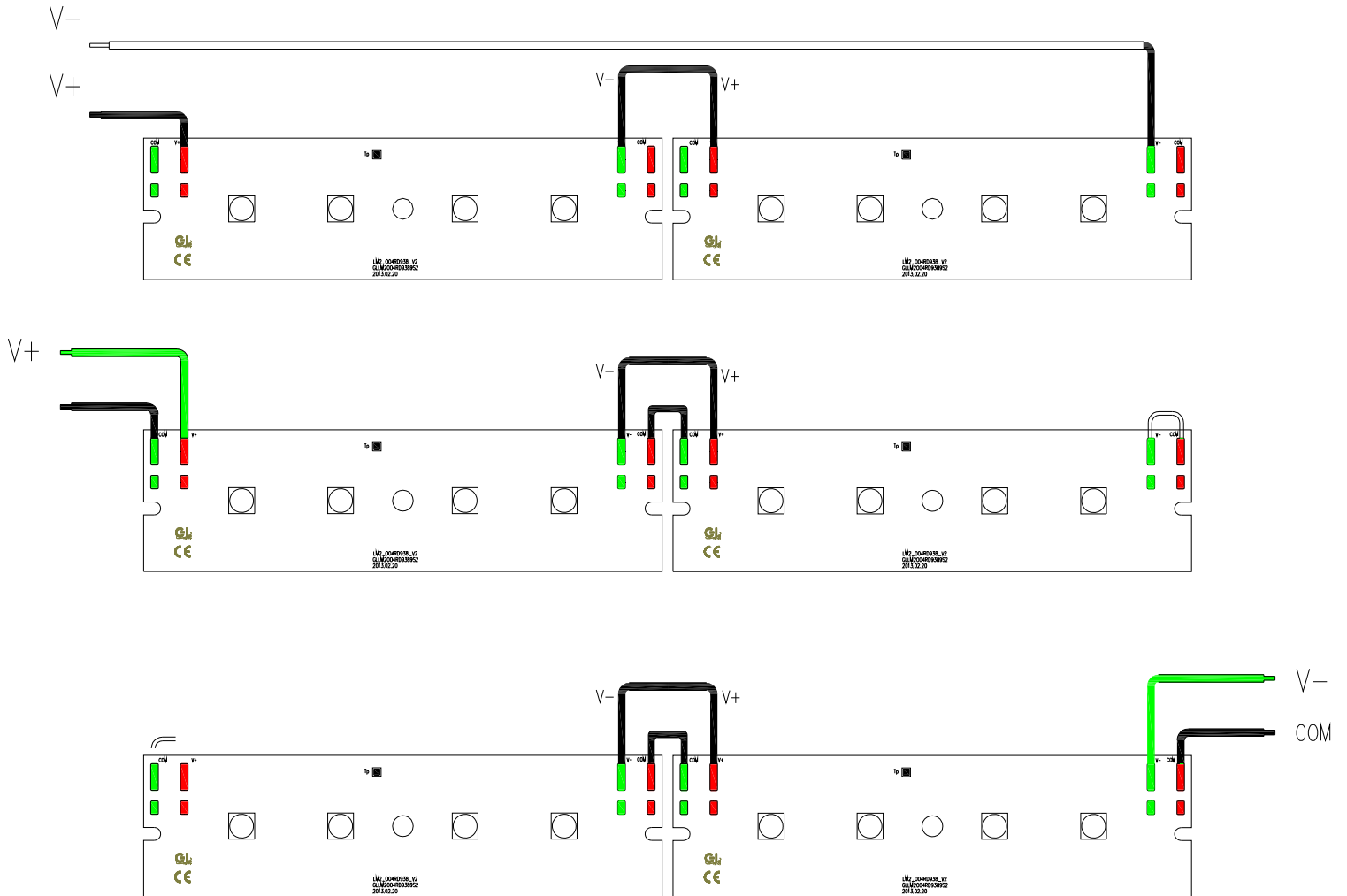
* M3 Screw / Torque 3.0kgf.cm

Note: All specifications are subject to change without notice.

PCB SERIES DRAWINGS

2D drawing with dimensions:

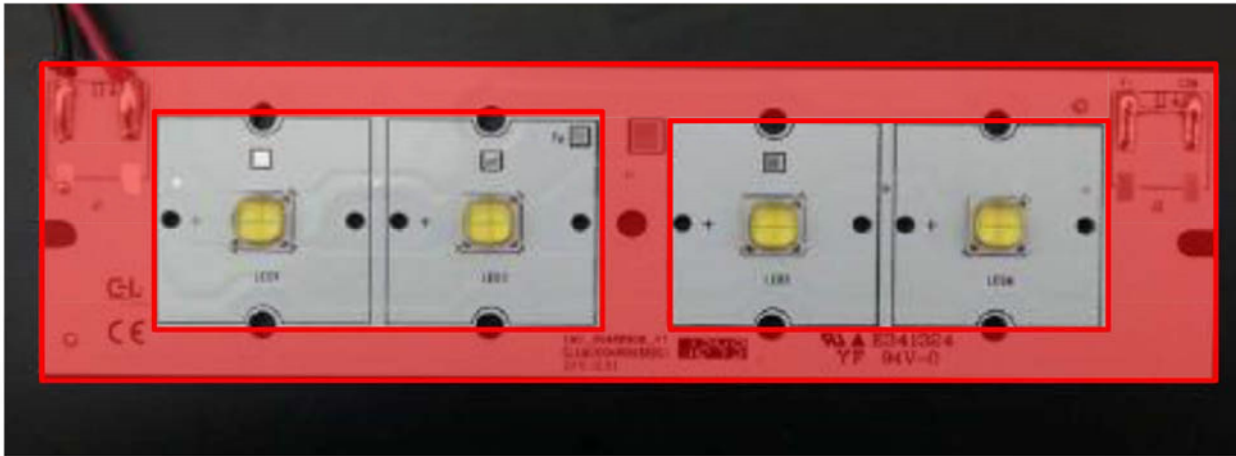
(Unit: mm)



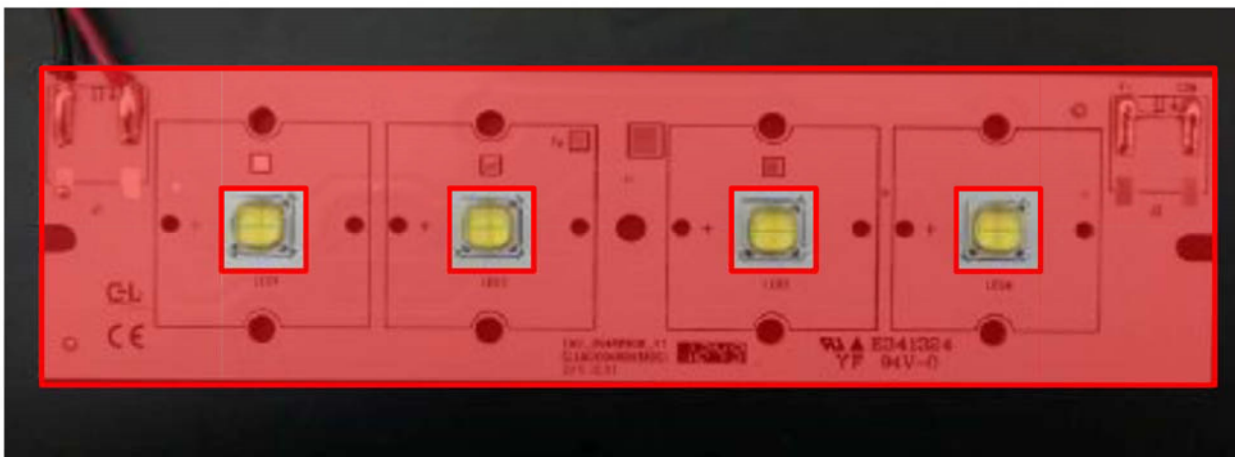
* Maximum connection units: 7pcs

Note: All specifications are subject to change without notice.

AREA WITH CONFORMAL COATING



Conformal coating with optics in shaded area



Conformal coating without optics in shaded area

Note: All specifications are subject to change without notice.

PART NUMBERING & ORDERING INFORMATION

1. PRODUCT SERIES
 GLV92RE0381
 Rectangle MCPCB with 4 LEDs

2. CONNECTOR TYPE
 00 – Solder Pad
 20 – 20cm UL1007 20Awg Solid Wire
 CW – Wago 2060-802/998-404

3. LED TYPE
 LM - LXR7 LUXEON® M

4. NUMBER OF LED
 04- 4 LEDs

5. CCT
 S30 – 3000K ANSI
 S40 – 4000K ANSI
 S50 – 5000K ANSI
 S57 – 5700K ANSI
 S65 – 6500K ANSI

6. FLUX BIN
 Q – Min. 780-840 and up@700mA
 R – Min. 840-900 and up@700mA

7. OPTICS
 OLW – Ledil single lens 12767
 OLA – Ledil single lens 12726
 OLV – Ledil single lens 12727
 OLC – Ledil single lens 12410

Part Number :

GLV92RE0381 / AA – BB CC DDD E FFF
 1 2 3 4 5 6 7

COMPANY INFORMATION

About Future Lighting Solutions

Future Lighting Solutions (www.futurelightingsolutions.com) is a leading provider of LED lighting components and support services for solid-state lighting products and installations, including engineering expertise, concept development, full system solutions and online tools that accelerate quality application development. The company is a division of Future Electronics.

About simpleLED®

Future Lighting Solutions simpleLED program has over 500 combinations of LUXEON® LED & Optic configurations, enabling you to select the right Light Engine for your application, eliminate prototyping delays and accelerating time to market. Additional benefits include UL recognized quality and a 3 year warranty. Visit our website and start innovating.

CONTACT DETAILS

In North America:

1-888-LUXEON2

Americas@futurelightingsolutions.com

In Europe:

00-800-44FUTURE

Europe@futurelightingsolutions.com

In Asia:

+800-LUMILEDS

Asia@futurelightingsolutions.com

In Japan:

+81-0120-667-013

Japan@futurelightingsolutions.com