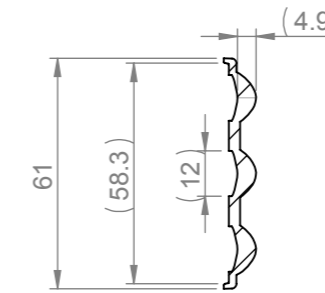
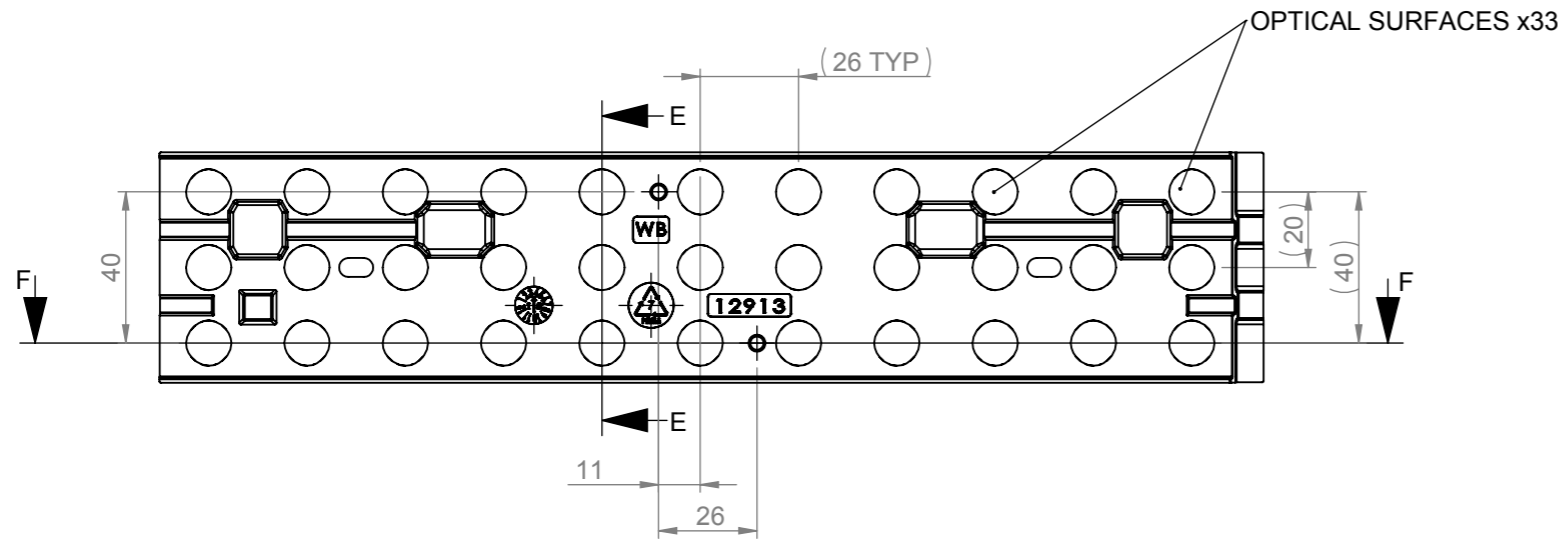
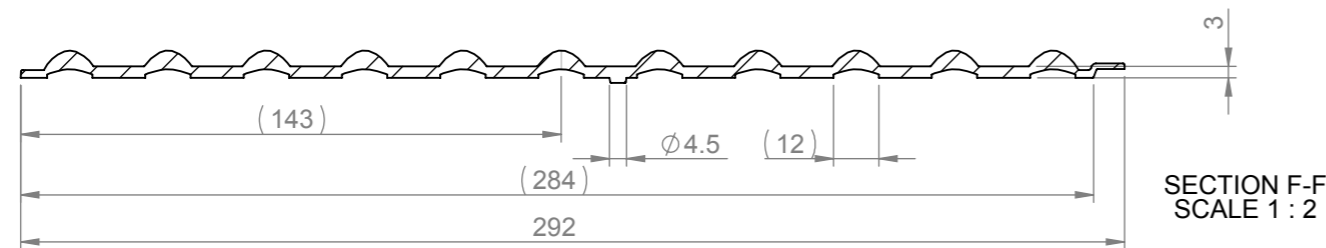


CUSTOMER DRAWING

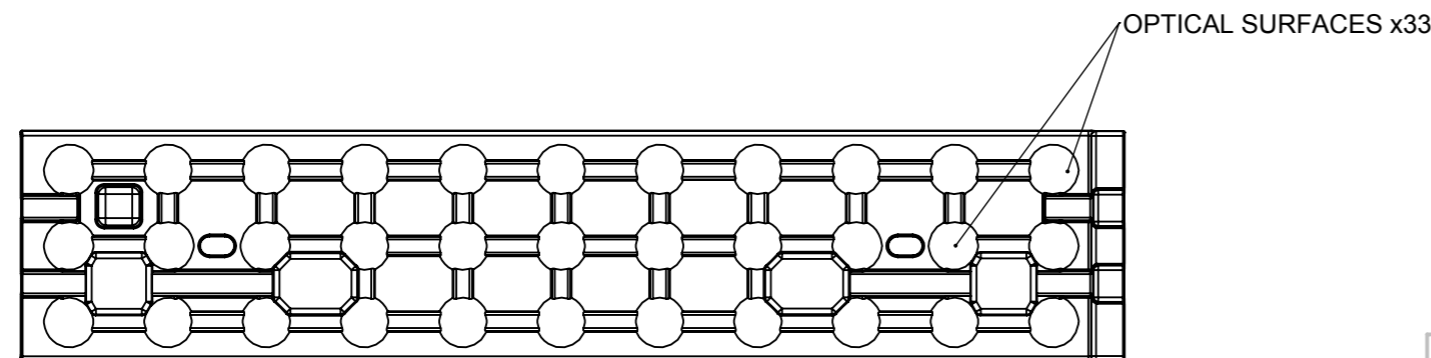
REVISIONS				
REV.	D.C.N NUMBER	DESCRIPTION	DATE	APPROVED
D1		FIRST ISSUE	09/03/15	NA
D2	1400	FLANGE INCREASE LENGTH FROM 290MM TO 295MM	11/03/2015	NA
D3	1401	FLANGE STEP REDUCED, LENGTH NOW 292MM	13/03/2015	NA
D4	1431	CONNECTOR BOX TEXTURE MODS. P.SUTTON	17/07/2015	MB 17/07/15
1	1434	FUSEBOX ADDITION & PROD RELEASE. PJS	10/09/2015	



SECTION E-E
SCALE 1:2



SECTION F-F
SCALE 1:2



NOTES:

- 1 - MATERIAL: PMMA
- 2 - FINISH: OPTICAL SURFACES ARE OPTICALLY POLISHED.
- 3 - DIMENSIONS IN BRACKETS ARE AUXILIARY DIMENSIONS AND NOT FOR INSPECTION PURPOSES.

<p>Unit 6-7 Faraday Road Rabans Lane Industrial Area, Aylesbury, HP19 8RY, UK. Tel: +44(0) 01753 575 011 sales@carclo-optics.com www.carclo-optics.com</p>		Title		Mid-Power Array Wide Beam - OverLap Flange			
		Drawn by	B.Bercof	Customer	CARCLO OPTICS	Scale	1:2
THIRD ANGLE PROJECTION	TOLERANCE ACCORDING TO NORM: DIN 16742 Tol Group TG6	CARCLO Optics CONFIDENTIAL: UNAUTHORISED COPYING, DISCUSSION & DISTRIBUTION PROHIBITED		DIMENSION IN mm		Format Size	A3
		CAD File	12913_Rev_1_WB_ASBoard				
		Part N°	12913		RFQ N°	000297	