

NEW!

BriskHeat[®]
Corporation

Your *Heating* Specialist since 1949



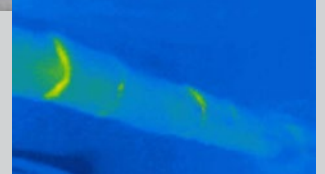
Silver-Series Cloth Insulators

Professional Solutions for Industrial Pipe Insulation

Prevent Heat Loss with Silver Series Insulators



Without
Insulation



With Silver-Series
Insulation

BriskHeat provides personalized service and quality products that maximize efficiency and long-lasting trouble-free performance.

Silver-Series Cloth Insulators

- Modular insulator system configurable to fit your requirements
- Reduces operating cost by increasing thermal efficiency
- 1" thick insulation R-Value: 3.3, K-factor: 0.21@75°F (24°C)
- Overlapping hook/loop closure for easy install/removal
- Temperatures up to 450°F (232°C)
- For use with self-regulating heating cable, constant-watt heating cable, heating tapes, and general purpose insulating applications.



Cut to Length Modular System

Ordering Information

Valve		
Part No.	Description	Pipe/Tube OD
SSIVB102	2-Way 1" Ball Valve	1/2" - 1"
SSIVB152	2-Way 1.5" Ball Valve	1" - 1.5"
SSIVB202	2-Way 2" Ball Valve	1.5" - 2"
SSIVB302	2-Way 3" Ball Valve	2" - 3"
SSIVB402	2-Way 4" Ball Valve	3" - 4"
SSIVC102	2-Way 1" Control Valve	1/2" - 1"
SSIVC152	2-Way 1.5" Control Valve	1" - 1.5"
SSIVC202	2-Way 2" Control Valve	1.5" - 2"
SSIVC302	2-Way 3" Control Valve	2" - 3"
SSIVC402	2-Way 4" Control Valve	3" - 4"
SSIVG152	2-Way 1.5" Gate Valve	1" - 1.5"
SSIVG202	2-Way 2" Gate Valve	1.5" - 2"
SSIVG302	2-Way 3" Gate Valve	2" - 3"
SSIVG402	2-Way 4" Gate Valve	3" - 4"
SSIVB103	3-Way 1" Ball Valve	1/2" - 1"
SSIVB153	3-Way 1.5" Ball Valve	1" - 1.5"
SSIVB203	3-Way 2" Ball Valve	1.5" - 2"
SSIVB303	3-Way 3" Ball Valve	2" - 3"
SSIVB403	3-Way 4" Ball Valve	3" - 4"
SSIVC103	3-Way 1" Control Valve	1/2" - 1"
SSIVC153	3-Way 1.5" Control Valve	1" - 1.5"
SSIVC203	3-Way 2" Control Valve	1.5" - 2"
SSIVC303	3-Way 3" Control Valve	2" - 3"
SSIVC403	3-Way 4" Control Valve	3" - 4"
SSIVG153	3-Way 1.5" Gate Valve	1" - 1.5"
SSIVG203	3-Way 2" Gate Valve	1.5" - 2"
SSIVG303	3-Way 3" Gate Valve	2" - 3"
SSIVG403	3-Way 4" Gate Valve	3" - 4"

Straight Pipe		
Part No.	Description	Pipe/Tube OD
SSIP10	1" Straight Pipe	1/2" - 1"
SSIP15	1.5" Straight Pipe	1" - 1.5"
SSIP20	2" Straight Pipe	1.5" - 2"
SSIP30	3" Straight Pipe	2" - 3"
SSIP40	4" Straight Pipe	3" - 4"

Qty 1 - Accommodates up to 83" of finished length.

Flange		
Part No.	Description	Pipe/Tube OD
SSIF10	1" Flange (Max Dia. 4-7/8")	1/2" - 1"
SSIF15	1.5" Flange (Max Dia. 6-1/8")	1" - 1.5"
SSIF20	2" Flange (Max Dia. 6-1/2")	1.5" - 2"
SSIF25	2.5" Flange (Max Dia. 7-1/2")	2" - 2.5"
SSIF30	3" Flange (Max Dia. 8-1/4")	2.5" - 3"
SSIF40	4" Flange (Max Dia. 10-3/4")	3" - 4"

Seam Cover		
Part No.	Description	Pipe/Tube OD
SSIC10	1" Seam Cover	1/2" - 1"
SSIC20	2" Seam Cover	1.5" - 2"
SSIC30	3" Seam Cover	2" - 3"
SSIC40	4" Seam Cover	3" - 4"

Tee		
Part No.	Description	Pipe/Tube OD
SSIT10	1" Tee	1/2" - 1"
SSIT20	2" Tee	1.5" - 2"
SSIT30	3" Tee	2" - 3"
SSIT40	4" Tee	3" - 4"

90° Elbow		
Part No.	Description	Pipe/Tube OD
SSI9010	1" 90° Elbow	1/2" - 1"
SSI9020	2" 90° Elbow	1.5" - 2"
SSI9030	3" 90° Elbow	2" - 3"
SSI9040	4" 90° Elbow	3" - 4"

Custom materials, temperatures, sizes and shapes available.
Contact a BriskHeat representative for more information.

BriskHeat[®]
Corporation
Your Heating Specialist since 1949
www.briskheat.com