

Transmitter Module PTM 535

PTM 535 transmitter module enables the realization of energy harvesting wireless switches or push buttons for EnOcean systems.

PTM 535 is designed to be supplied by EnOcean ECO 200 energy harvester.

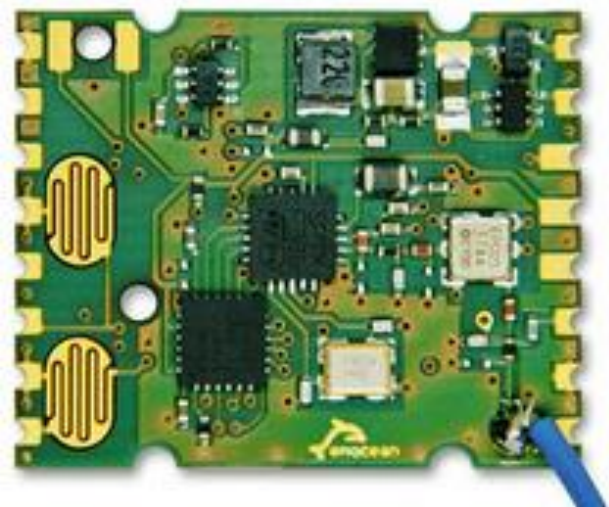
ECO 200 can be mechanically connected to PTM 535 using two contact pairs or wired to the electrical interface of PTM 535.

Upon detection of an energy pulse from the ECO 200 harvester, PTM 535 will read the status of the following signals:

- Polarity of the energy pulse
- Status of on-board meander contacts
- Status of input signals

The status of these signals will be reported as EnOcean radio telegram. PTM 535 supports both standard and high security communication.

PTM 535 contains a placement option for a learn button (LRN) to send secure teach-in telegrams and to change the communication mode.



The security mode and the telegram content can be selected using six configuration interface signals.

PTM 535 is mechanically and functionally compatible with previous PTM 330 and PTM 335 modules.

Order Information

TYPE

PTM 535

ORDERING CODE

S3001-A535

Features Overview

Antenna	50 Ohm whip antenna
Radio Frequency	868.300 MHz
Modulation	ASK
Bit Rate	125 kbps
Transmit Power (at antenna base, at 25°C)	+5 dBm
Commissioning	Learn Button (placement option on-board)
Security	AES128 encryption and authentication
Power Supply	ECO 200 Kinetic Energy Harvester
Harvester Interface	2 pairs of contacts
External Interface	16 pins (solderable)
On-board Interface	2 meander contacts
Module Dimensions	26.2 +- 0.3 mm x 21.15 +-0.3 mm
Operating Temperature	-25°C ... 65°C
Radio Certification	RED (European Union)