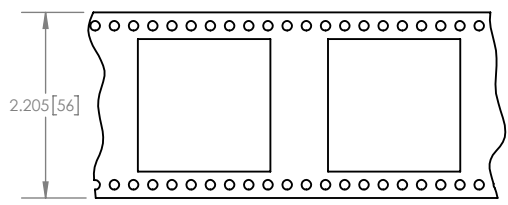
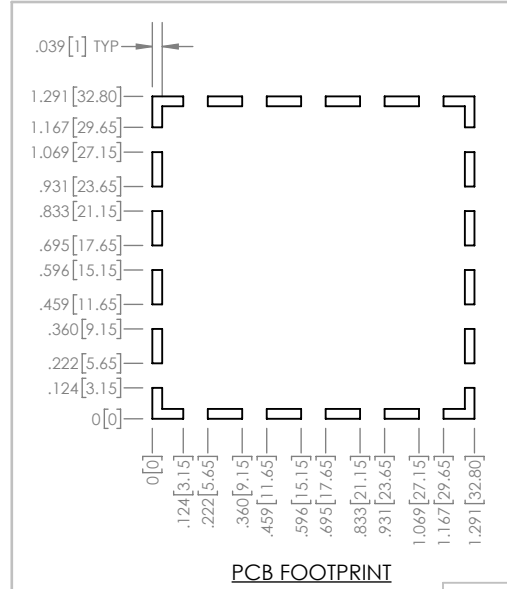
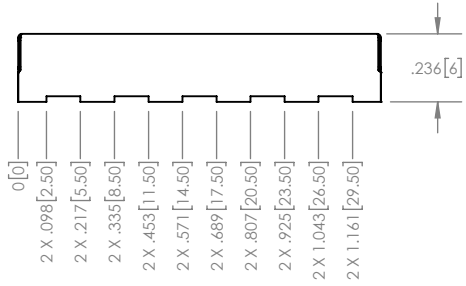
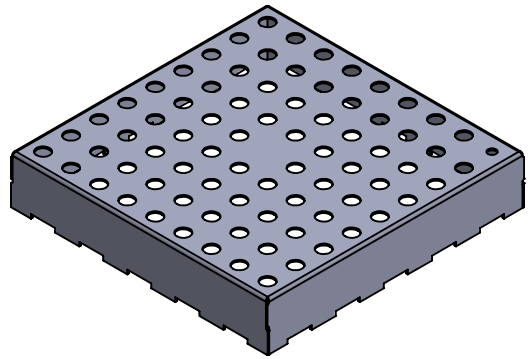
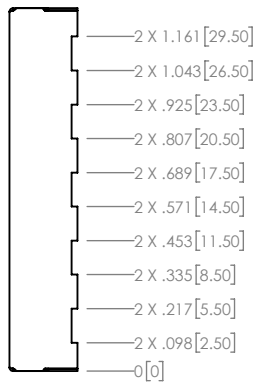
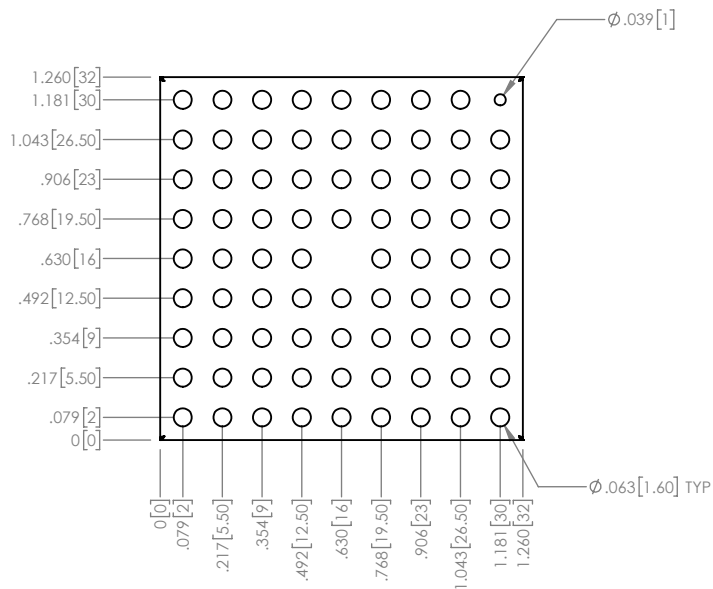


NOTES:

- MATERIAL: 0.008" TIN PLATED STEEL PER ASTM A623/A624
- PARTS PER REEL: 180



TAPE AND REEL

PROPRIETARY NOTICE: THESE DRAWINGS, LISTS OR SPECIFICATIONS ARE THE CONFIDENTIAL INFORMATION AND/OR TRADE SECRETS OF 3G SHIELDING SPECIALTIES IP, AND ISSUED IN STRICT CONFIDENCE. EXCEPT AS AUTHORIZED BY 3G SHIELDING SPECIALTIES IN WRITING, THESE DRAWINGS, LISTS OR SPECIFICATIONS SHALL NOT BE REPRODUCED, RETRANSMITTED, USED FOR THE DESIGN, MANUFACTURE OR SALE OF EQUIPMENT OR USED FOR ANY OTHER PURPOSE OTHER THAN EVALUATION.

UNLESS OTHERWISE SPECIFIED
U/M INCHES TOLERANCE ± 0.005

DATE 16-01-26

ROHS COMPLIANCE 2011/65/EU



| | |
|------------------|------------|
| PART NUMBER | REV. |
| PIC-S-104 | 0 |
| DESCRIPTION | SHIELD CAN |
| SCALE | SHEET |
| 1.5:1 | 1 OF 1 |