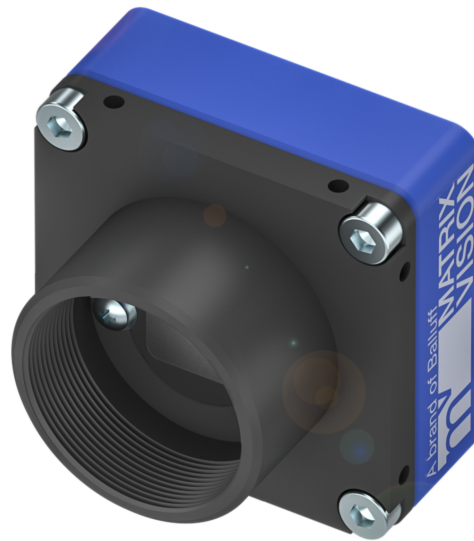


MATRIX VISION Industrial Cameras  
**mvBlueFOX-IGC Series - Standard**



**mvBlueFOX-IGC2xxxx-(1)(2)(3)(4)**

**mvBlueFOX-IGC**  
 USB 2.0 industrial camera

**xxxx Model**  
 See table below

- (1) Lensholder**  
 1 = CS-mount without adjustable backfocus (standard)  
 2 = C-mount without adjustable backfocus (CS-mount with add. 5 mm extension ring)  
 3 = C-mount with adjustable backfocus

- (2) Filter**  
 1 = IR-Cut  
 2 = Glass filter  
 3 = Daylight cut  
 9 = Without filter

- (3) Housing**  
 1 = Color blue (standard)

- (4) Misc**  
 1 = None  
 2 = With I/O

Model name	Resolution	FPS*	Sensor	Pixel size
mvBlueFOX-IGC				
200wG/C	0.4 MP (752 x 480)	93/88.6	MT9V034 (1/3", Pipelined / GS, CMOS)	6.0 µm
202vG/C	1.2 MP (1280 x 960)	24.6/24.6	AR0135 (1/3", Pipelined / GS, CMOS)	3.75 µm
205G/C	5 MP (2592 x 1944)	5.8/5.8	MT9P031 (1/2.5", RS, CMOS)	2.2 µm

*G/C = Monochrome and color models available*  
*FPS = Frames per Second*  
*GS = Global Shutter*  
*RS = Rolling Shutter*  
*\* = Burst Mode/Streaming*

# MATRIX VISION Industrial Cameras mvBlueFOX-IGC Series - Standard



## Basic features

<b>Approval/Conformity</b>	CE UKCA WEEE
<b>Version</b>	Industrial camera

## Electrical connection

<b>Connection 1</b>	USB2: USB 2.0 Mini-B-Female, 5-pin
<b>Connection 2</b>	Dig. I/O: Molex connector-Female, 12-pin
<b>Polarity reversal protected</b>	yes
<b>Short-circuit protection</b>	no

## Electrical data

<b>Operating voltage Ub</b>	4.75...5.25 VDC
-----------------------------	-----------------

## Environmental conditions

<b>Ambient temperature</b>	5...55 °C
<b>EN 60068-2-27, Shock</b>	-
<b>EN 60068-2-6, Vibration</b>	-
<b>Relative humidity</b>	20...80%
<b>Storage temperature</b>	-20...60 °C

## Remarks

Not included in scope of delivery: Camera lens, filter, light, connection cable, power supply

For more information about MTTF and B10d see MTTF / B10d Certificate

Indication of the MTTF- / B10d value does not represent a binding composition and/or life expectancy assurance; these are simply experiential values with no warranty implications. These declared values also do not extend the expiration period for defect claims or affect it in any way.

## Functional Characteristics

<b>Data storage</b>	8 Mpixels
<b>Decimation</b>	Horizontal and vertical
<b>Exposure time</b>	10 µs...10 s *
<b>Image formats</b>	Bayer8 Bayer10 Mono8 Mono10
<b>Trigger Modi</b>	Free run Hardware trigger Software trigger

## Interface

<b>Auxiliary interfaces</b>	I <sup>2</sup> C
<b>Digital inputs</b>	PNP galvanically isolated
<b>Digital outputs</b>	PNP galvanically isolated
<b>Interface</b>	USB 2.0

## Material

<b>Housing material</b>	Aluminium, Powder coated, Painted
-------------------------	-----------------------------------

## Mechanical data

<b>Dimension</b>	35 x 33 x 25 mm
<b>Lens mount</b>	None
<b>Weight</b>	80 g

**MATRIX VISION Industrial Cameras**  
**mvBlueFOX-IGC Series - Standard**

**Product View**

N/A

