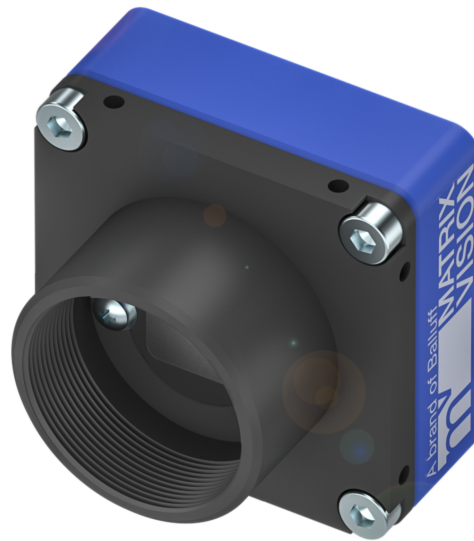


MATRIX VISION Industrial Cameras  
**mvBlueFOX-IGC Series - Standard**



**mvBlueFOX-IGC2xxxx-(1)(2)(3)(4)**

**mvBlueFOX-IGC**  
 USB 2.0 industrial camera

**xxxx Model**  
 See table below

- (1) Lensholder**  
 1 = CS-mount without adjustable backfocus (standard)  
 2 = C-mount without adjustable backfocus (CS-mount with add. 5 mm extension ring)  
 3 = C-mount with adjustable backfocus

- (2) Filter**  
 1 = IR-Cut  
 2 = Glass filter  
 3 = Daylight cut  
 9 = Without filter

- (3) Housing**  
 1 = Color blue (standard)

- (4) Misc**  
 1 = None  
 2 = With I/O

| Model name    | Resolution          | FPS*      | Sensor                               | Pixel size |
|---------------|---------------------|-----------|--------------------------------------|------------|
| mvBlueFOX-IGC |                     |           |                                      |            |
| 200wG/C       | 0.4 MP (752 x 480)  | 93/88.6   | MT9V034 (1/3", Pipelined / GS, CMOS) | 6.0 µm     |
| 202vG/C       | 1.2 MP (1280 x 960) | 24.6/24.6 | AR0135 (1/3", Pipelined / GS, CMOS)  | 3.75 µm    |
| 205G/C        | 5 MP (2592 x 1944)  | 5.8/5.8   | MT9P031 (1/2.5", RS, CMOS)           | 2.2 µm     |

*G/C = Monochrome and color models available*  
*FPS = Frames per Second*  
*GS = Global Shutter*  
*RS = Rolling Shutter*  
*\* = Burst Mode/Streaming*

# MATRIX VISION Industrial Cameras mvBlueFOX-IGC Series - Standard



## Basic features

|                            |                    |
|----------------------------|--------------------|
| <b>Approval/Conformity</b> | CE<br>UKCA<br>WEEE |
| <b>Version</b>             | Industrial camera  |

## Electrical connection

|                                    |  |
|------------------------------------|--|
| <b>Connection 1</b>                | USB2: USB 2.0 Mini-B-Female, 5-pin       |
| <b>Connection 2</b>                | Dig. I/O: Molex connector-Female, 12-pin |
| <b>Polarity reversal protected</b> | yes                                      |
| <b>Short-circuit protection</b>    | no                                       |

## Electrical data

|                             |                 |
|-----------------------------|-----------------|
| <b>Operating voltage Ub</b> | 4.75...5.25 VDC |
|-----------------------------|-----------------|

## Environmental conditions

|                                |             |
|--------------------------------|-------------|
| <b>Ambient temperature</b>     | 5...55 °C   |
| <b>EN 60068-2-27, Shock</b>    | -           |
| <b>EN 60068-2-6, Vibration</b> | -           |
| <b>Relative humidity</b>       | 20...80%    |
| <b>Storage temperature</b>     | -20...60 °C |

## Remarks

Not included in scope of delivery: Camera lens, filter, light, connection cable, power supply

For more information about MTTF and B10d see MTTF / B10d Certificate

Indication of the MTTF- / B10d value does not represent a binding composition and/or life expectancy assurance; these are simply experiential values with no warranty implications. These declared values also do not extend the expiration period for defect claims or affect it in any way.

## Functional Characteristics

|                      |  |
|----------------------|--|
| <b>Data storage</b>  | 8 Mpixels  |
| <b>Decimation</b>    | Horizontal and vertical                          |
| <b>Exposure time</b> | 10 µs...10 s *                                   |
| <b>Image formats</b> | Bayer8<br>Bayer10<br>Mono8<br>Mono10             |
| <b>Trigger Modi</b>  | Free run<br>Hardware trigger<br>Software trigger |

## Interface

|                             |                           |
|-----------------------------|---------------------------|
| <b>Auxiliary interfaces</b> | I <sup>2</sup> C          |
| <b>Digital inputs</b>       | PNP galvanically isolated |
| <b>Digital outputs</b>      | PNP galvanically isolated |
| <b>Interface</b>            | USB 2.0                   |

## Material

|                         |                                   |
|-------------------------|-----------------------------------|
| <b>Housing material</b> | Aluminium, Powder coated, Painted |
|-------------------------|-----------------------------------|

## Mechanical data

|                   |                 |
|-------------------|-----------------|
| <b>Dimension</b>  | 35 x 33 x 25 mm |
| <b>Lens mount</b> | None            |
| <b>Weight</b>     | 80 g            |

**MATRIX VISION Industrial Cameras**  
**mvBlueFOX-IGC Series - Standard**

**Product View**

N/A

