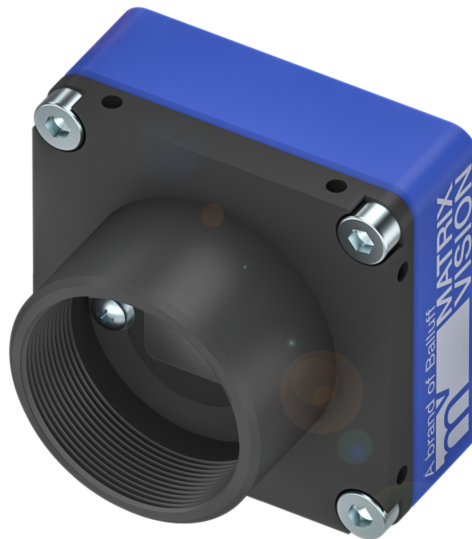


MATRIX VISION Industrial Cameras
mvBlueFOX-IGC Series - Standard



mvBlueFOX-IGC2xxxx-(1)(2)(3)(4)

mvBlueFOX-IGC
 USB 2.0 industrial camera

xxxx Model
 See table below

(1) Lensholder

- 1 = CS-mount without adjustable backfocus (standard)
- 2 = C-mount without adjustable backfocus (CS-mount with add. 5 mm extension ring)
- 3 = C-mount with adjustable backfocus

(2) Filter

- 1 = IR-Cut
- 2 = Glass filter
- 3 = Daylight cut
- 9 = Without filter

(3) Housing

- 1 = Color blue (standard)

(4) Misc

- 1 = None
- 2 = With I/O

Model name	Resolution	FPS*	Sensor	Pixel size
mvBlueFOX-IGC				
200wG/C	0.4 MP (752 x 480)	93/88.6	MT9V034 (1/3", Pipelined / GS, CMOS)	6.0 µm
202vG/C	1.2 MP (1280 x 960)	24.6/24.6	AR0135 (1/3", Pipelined / GS, CMOS)	3.75 µm
205G/C	5 MP (2592 x 1944)	5.8/5.8	MT9P031 (1/2.5", RS, CMOS)	2.2 µm

G/C = Monochrome and color models available
FPS = Frames per Second
GS = Global Shutter
RS = Rolling Shutter
** = Burst Mode/Streaming*

MATRIX VISION Industrial Cameras mvBlueFOX-IGC Series - Standard



Basic features

Approval/Conformity	CE UKCA WEEE
Version	Industrial camera

Electrical connection

Connection 1	USB2: USB 2.0 Mini-B-Female, 5-pin
Connection 2	Dig. I/O: Molex connector- Female, 12-pin
Polarity reversal protected	yes
Short-circuit protection	no

Electrical data

Operating voltage Ub	4.75...5.25 VDC
-----------------------------	-----------------

Environmental conditions

Ambient temperature	5...55 °C
EN 60068-2-27, Shock	-
EN 60068-2-6, Vibration	-
Relative humidity	20...80%
Storage temperature	-20...60 °C

Functional Characteristics

Data storage	8 Mpixels
Decimation	Horizontal and vertical
Exposure time	10 µs...10 s *
Image formats	Bayer8 Bayer10 Mono8 Mono10
Trigger Modi	Free run Hardware trigger Software trigger

Interface

Auxiliary interfaces	I²C
Digital inputs	PNP galvanically isolated
Digital outputs	PNP galvanically isolated
Interface	USB 2.0

Material

Housing material	Aluminium, Powder coated, Painted
-------------------------	--------------------------------------

Mechanical data

Dimension	35 x 33 x 25 mm
Lens mount	None
Weight	80 g

Remarks

Not included in scope of delivery: Camera lens, filter, light, connection cable, power supply

For more information about MTTF and B10d see MTTF / B10d Certificate

Indication of the MTTF- / B10d value does not represent a binding composition and/or life expectancy assurance; these are simply experiential values with no warranty implications. These declared values also do not extend the expiration period for defect claims or affect it in any way.

MATRIX VISION Industrial Cameras
mvBlueFOX-IGC Series - Standard



Product View

N/A

