

AC Feedthrough Filter



- IEC/EN 60939 approval
- Rated currents from 10 to 63 A
- 5 kV pulse test capability
- Class Y2 capacitor



Technical Specifications

| | |
|--|--|
| Maximum continuous operating voltage | 300 VAC, 50/60 Hz (ENEC) 250 VAC, 50/60 Hz (UL) 1000 VDC max |
| Rated currents | 10 to 63 A @ 60°C max |
| Capacitor class | Y2 |
| High potential test voltage | 3000 VDC for 2 sec |
| Insulation resistance (100VDC after 60 sec) | <0.33 μF, R >15,000 MΩ >0.33 μF, τ >5000 s |
| Temperature range (operation and storage) | -40°C to +100°C (40/100/21) |
| Flammability corresponding to | UL 94 V-2 or better |
| MTBF @ 60°C/300 V (Mil-HB-217F) | <200 A: >675,000 hours ≥200 A: >494,000 hours |
| Operating frequency | DC to 60 Hz |

Approvals & Compliances



Feedthrough filters offer a high insertion loss across a broad band of frequencies from a few tens of kHz up to the GHz region. In general, feedthrough filters offer a higher level of EMI suppression than feedthrough capacitors of the same current rating. This is particularly relevant to applications where source impedance is smaller than 50 Ω. Different versions are available offering a wide selection on operating currents and performance levels. AC feedthrough filters are designed and approved for up to 300 VAC 50/60 Hz operation.

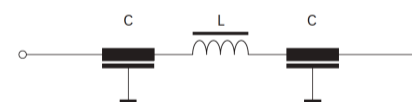
Features and Benefits

- Very low internal series inductance
- Very high self-resonant frequency
- Self-healing dielectric
- High quality and reliability
- Through-bulkhead mounting
- Anti-twist protection
- Custom-specific or dual-versions on request

Typical Applications

- Power line filter for 110/240 VAC power lines
- Increasing system and information security
- Power supplies
- Switching and cellular equipment
- Computer servers
- UPS power supplies
- Medical equipment
- Shielded rooms

Typical electrical schematic



Feedthrough Selector Table

| Feedthrough | Rated current @ 60°C [A] | Leakage current* @ 250 VAC/50 Hz [mA] | Capacitance** C [nF] | Inductance L @ 10 kHz [nH] | DC resistance*** R @ 25°C [mΩ] | Weight [g] |
|---------------|--------------------------------|---|----------------------------|----------------------------------|--------------------------------------|---------------|
| FN 7611-10-M3 | 10 | 1.89 | 10 | 70 | 1.2 | 55 |
| FN 7612-10-M3 | 10 | 8.86 | 47 | 70 | 1.52 | 70 |
| FN 7611-16-M4 | 16 | 4.15 | 22 | 70 | 0.65 | 80 |
| FN 7612-16-M4 | 16 | 18.85 | 100 | 70 | 0.92 | 90 |
| FN 7611-32-M4 | 32 | 4.15 | 22 | 70 | 0.65 | 80 |
| FN 7612-32-M4 | 32 | 18.85 | 100 | 70 | 0.92 | 90 |
| FN 7611-63-M6 | 63 | 28.3 | 150 | 186 | 0.47 | 250 |
| FN 7612-63-M6 | 63 | 88.6 | 470 | 124 | 0.53 | 500 |

* Tolerance +20%

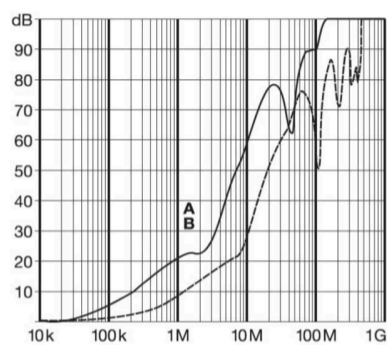
** Tolerance ±20%

*** Tolerance +15%

Typical Filter Attenuation

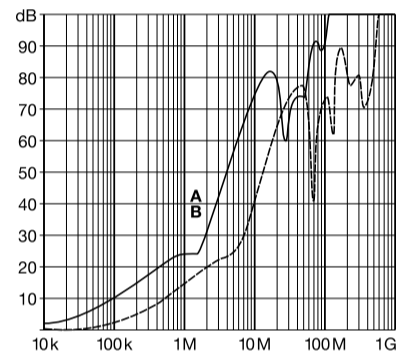
Full load, 50 Ω system

10 A types



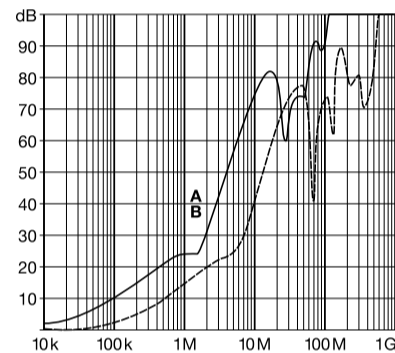
A = FN 7612-10-M3
B = FN 7611-10-M3

16 A types



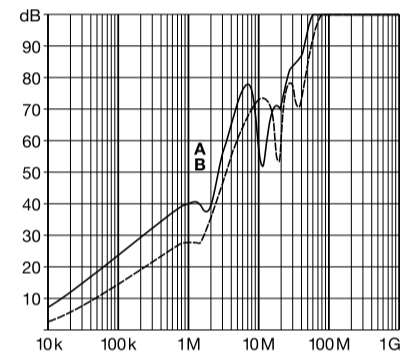
A = FN 7612-16-M4
B = FN 7611-16-M4

32 A types



A = FN 7612-32-M4
B = FN 7611-32-M4

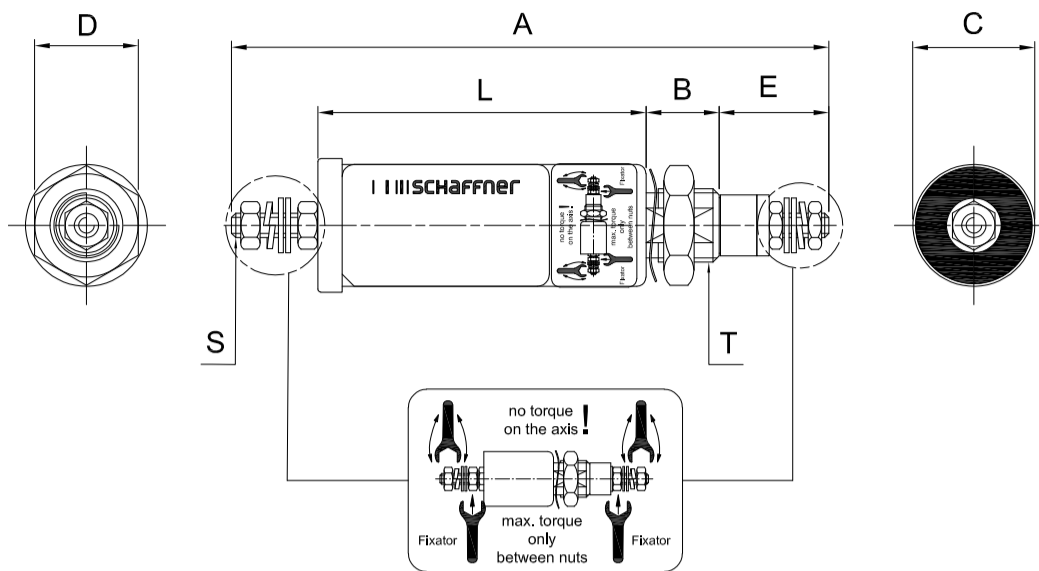
63 A types



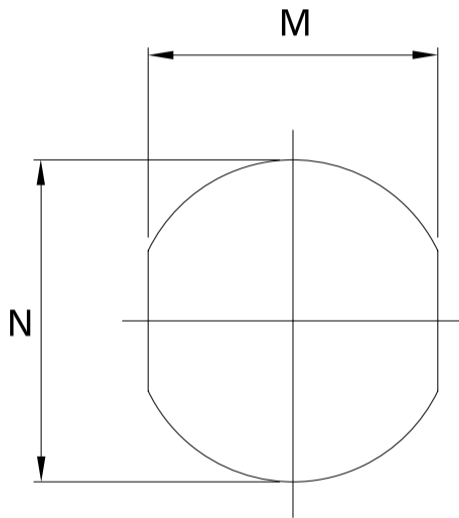
A = FN 7612-63-M6
B = FN 7611-63-M6

Mechanical Data

FN 761x10 A



Panel cut out



Dimensions

| | A | B | C | D | E | L | M | N | S | T |
|-------------------|-----|----|----|----|----|-----|------|-------|----|---------|
| FN 7611-10-M3 | 107 | 12 | 20 | 17 | 16 | 66 | 10.3 | Ø12.3 | M3 | M12x1 |
| FN 7612-10-M3 | 140 | 12 | 20 | 17 | 16 | 99 | 10.3 | Ø12.3 | M3 | M12x1 |
| FN 7611-16-M4 | 116 | 14 | 25 | 22 | 18 | 69 | 14.3 | Ø16.3 | M4 | M16x1 |
| FN 7612-16-M4 | 148 | 14 | 25 | 22 | 18 | 101 | 14.3 | Ø16.3 | M4 | M16x1 |
| FN 7611-32-M4 | 116 | 14 | 25 | 22 | 18 | 69 | 14.3 | Ø16.3 | M4 | M16x1 |
| FN 7612-32-M4 | 148 | 14 | 25 | 22 | 18 | 101 | 14.3 | Ø16.3 | M4 | M16x1 |
| FN 7611-63-M6 | 173 | 16 | 32 | 27 | 26 | 105 | 18.3 | Ø20.3 | M6 | M20x1 |
| FN 7612-63-M6 | 189 | 19 | 54 | 41 | 26 | 118 | 24.3 | Ø27.3 | M6 | M27x1.5 |
| Tolerances | | | | | ±2 | | ±0.2 | | | |

All dimensions in mm; 1 inch = 25.4 mm

Tolerances according: ISO 2768-m/EN 22768-m

Recommended Torque

| | M3 | M4 | M6 | M8 | M12 | M12x1 | M16x1 | M20x1 | M27x1.5 | M32x1.5 |
|------------------------|--------|--------|--------|------|-------|-------|-------|-------|---------|---------|
| Terminal thread | 0.5 Nm | 1.2 Nm | 2.5 Nm | 5 Nm | 11 Nm | | | | | |
| Mounting thread | | | | | | 3 Nm | 4 Nm | 7 Nm | 12 Nm | 14 Nm |

Headquarters, Global Innovation and Development

Switzerland

Schaffner Holding AG

Industrie Nord
Nordstrasse 11e
4542
Luterbach
+41 32 681 66 26
info@schaffner.com

Sales and Application Centers

China

Schaffner EMC Ltd. Shanghai

T20-3 C, No 565 Chuangye Road, Pudong district
201201
Shanghai
+86 2138139500
cschina@schaffner.com

Finland

Schaffner Oy

Sauvonrinne 19 H
8500
Lohja
+358 50 468 7284
finlandsales@schaffner.com

France

Schaffner EMC S.A.S.

16-20 Rue Louis Rameau
95875
Bezons
+33 1 34 34 30 60
francesales@schaffner.com

Germany

Schaffner Deutschland GmbH

Schoemperlenstrasse 12B
76185
Karlsruhe
+49 721 56910
germanysales@schaffner.com

India

Schaffner India Pvt. Ltd

Regus World Trade Centre
WTC, 22nd Floor Unit No 2238, Brigade Gateway Campus, 26/1, Dr. Rajkumar Road Malleshwaram (W)
560055
Bangalore
+91 8067935355
indiasales@schaffner.com

Italy

Schaffner EMC S.r.l.

Via Ticino, 30
20900
Monza (MB)
+39 039 21 41 070
italysales@schaffner.com

Japan

Schaffner EMC K.K.

ISM Sangenjaya 7F
1-32-12 Kamiuma, Setagaya-ku
154-0011
Tokyo
+81 3 5712 3650
japansales@schaffner.com

Singapore

Schaffner EMC Pte Ltd.

Blk 3015A Ubi Road 1, #05-09, Kampong Ubi Industrial Estate
408705
Singapore
+65 63773283
singaporesales@schaffner.com

Spain

Schaffner EMC España

Calle Caléndula 93, Miniparc III, Edificio E El Soto de Moraleja, Alcobendas
28109
Madrid
+34 917 912 900
spainsales@schaffner.com

Sweden

Schaffner EMC AB

Östermalmstrorg 1
114 42
Stockholm
+46 8 5050 2425
swedensales@schaffner.com

Switzerland

Schaffner EMV AG

Industrie Nord
Nordstrasse 11e
4542
Luterbach
+41 32 681 66 26
switzerlandsales@schaffner.com

Taiwan

Schaffner EMV Ltd.

U-Town
20 Floor-2, No 97, Section 1, XinTai 5th Road, XiZhi District
22175
New Taipei City
+886 226975500
taiwansales@schaffner.com

Thailand

Schaffner EMC Co. Ltd.

Sathorn Square Tower
Room 3780, 37FL, 98 North-Sathorn Rd, Silom, Bangrak
10500
Bangkok
+66 621056397
thailandsales@schaffner.com

United Kingdom

Schaffner Ltd.

1, Oakmede Place
Terrace Road
RG42 4JF
Binfield
+44 118 9770070
uksales@schaffner.com

United States

Schaffner EMC Inc.

52 Mayfield Avenue
Edison, New Jersey
+1 732 225 9533
usasales@schaffner.com

To find your local partner within Schaffner's global network schaffner.com

© 2022 Schaffner Group

The content of this document has been carefully checked and understood. However, neither Schaffner nor its subsidiaries assume any liability whatsoever for any errors or inaccuracies of this document and the consequences thereof. Published specifications are subject to change without notice. Product suitability for any area of application must ultimately be determined by the customer. In all cases, products must never be operated outside their published specifications. Schaffner does not guarantee the availability of all published products. This disclaimer shall be governed by substantive Swiss law and resulting disputes shall be settled by the courts at the place of business of Schaffner Holding AG. Latest publications and a complete disclaimer can be downloaded from the Schaffner website. All trademarks recognized.