



# User Guide

## EVB-ATEK816P5-02

---

Document Code : 023-107201  
Revision No : 02  
Revision Date : 10/01/2022

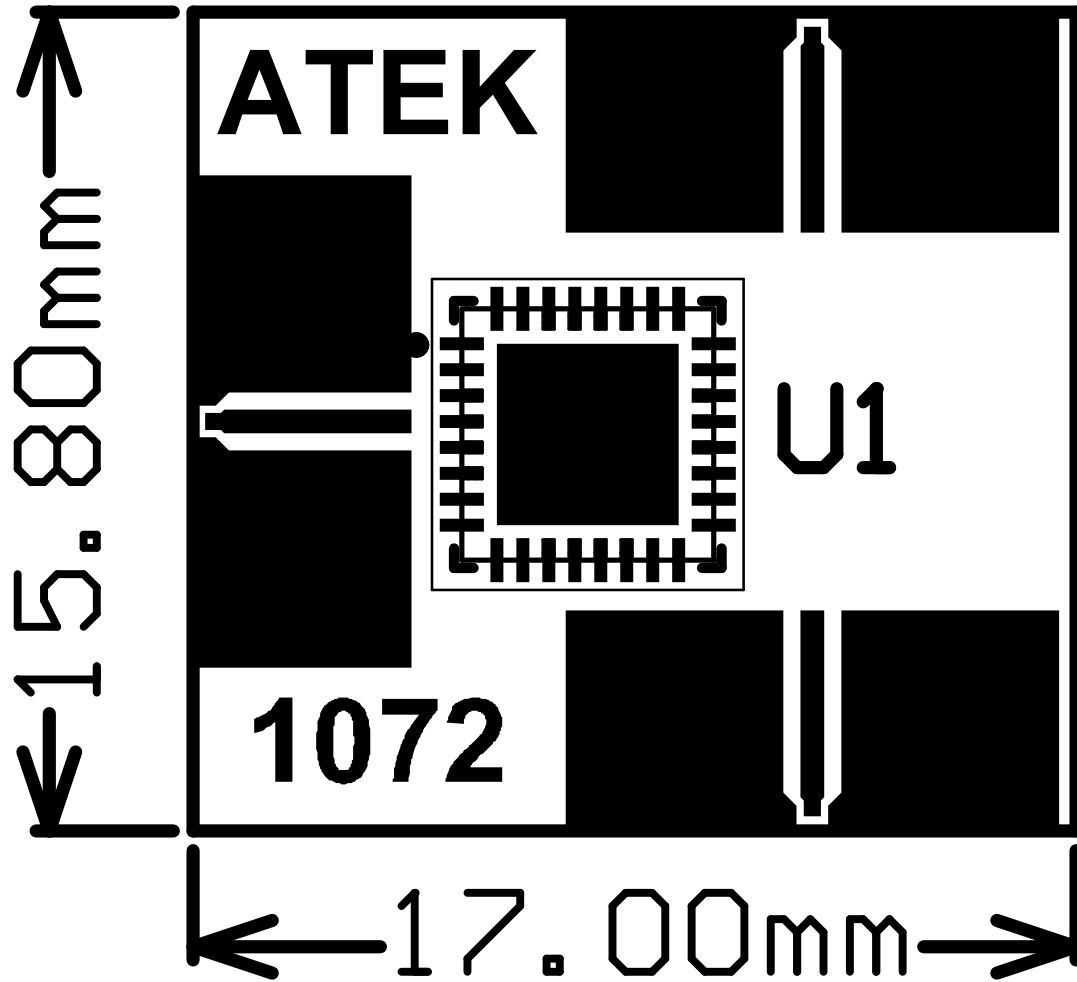
**Revisions**

Revision No	Revision Date	Revision Reason	Section / Page No
1.0	28.07.2021	Initial Version	
1.1	10.01.2022	Format and Content Fixed	

**INDEX**

<b>1</b>	<b>GENERAL INFORMATION .....</b>	<b>3</b>
<b>2</b>	<b>DESIGN INFORMATION.....</b>	<b>4</b>
<b>2.1</b>	<b>SCHEMATIC.....</b>	<b>4</b>
<b>2.2</b>	<b>BOM .....</b>	<b>4</b>
<b>3</b>	<b>TYPICAL PERFORMANCE PLOTS.....</b>	<b>5</b>

1 GENERAL INFORMATION



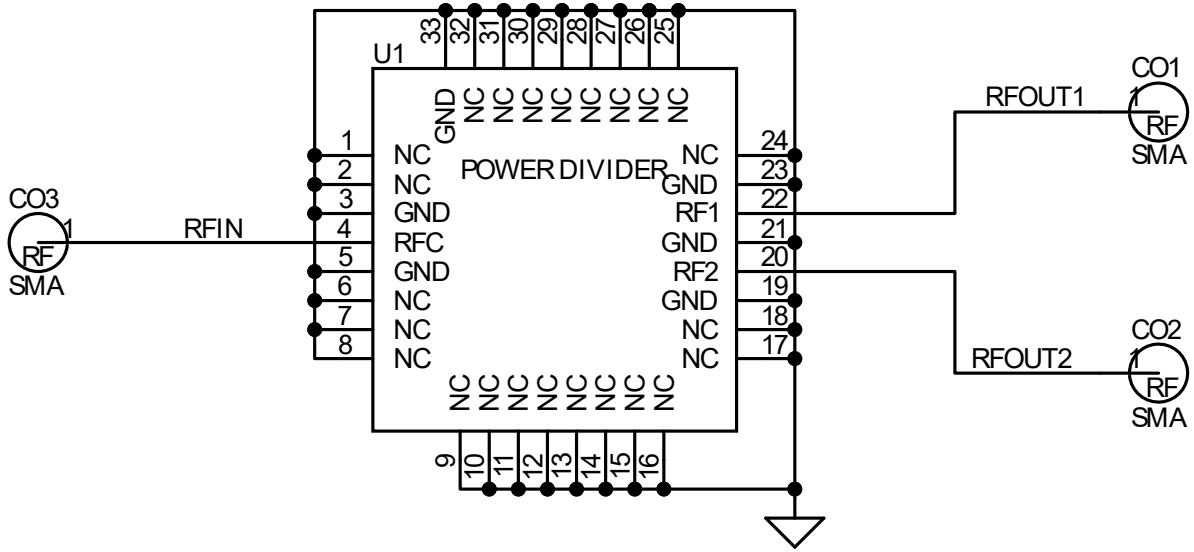
PIN Name	Definition	Comment
CO3	RF IN	K Connector
CO1, CO2	RF OUT	K Connector

Notes:

1. VDD Voltage is detailed in Datasheet.
2. Control Voltage is detailed in Datasheet.
3. The definition of up, down, right, and left is valid for this view of PCB.

2 DESIGN INFORMATION

2.1 SCHEMATIC



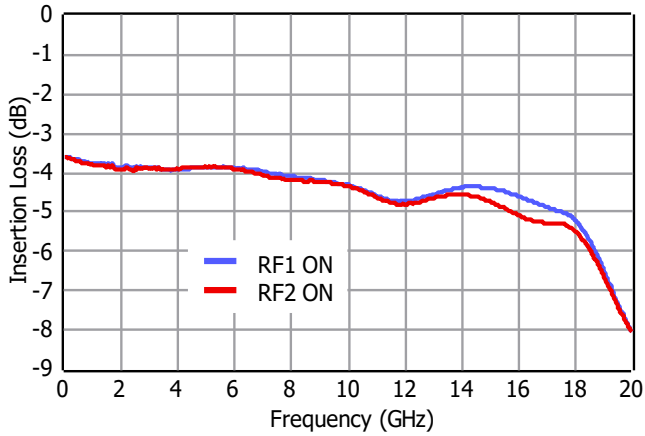
2.2 BOM

Designator	Footprint	Qty	Comment	PN
CO1, CO2, CO3	K Connector	3	K Connector	ATEK9292
U1	ATEKQ5532	1	Power Divider	ATEK816 P50

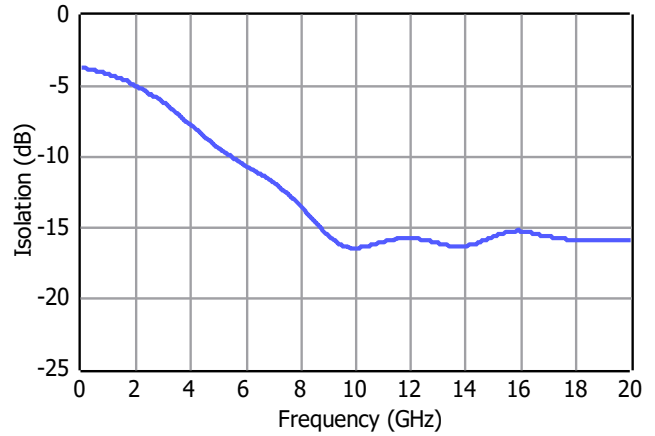
3 TYPICAL PERFORMANCE PLOTS

Conditions unless otherwise specified: Typical, T = 25 C, CW. For details, please refer to the datasheet.

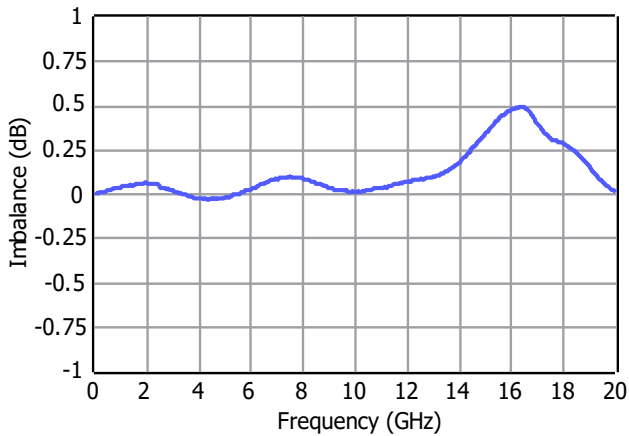
Insertion Loss



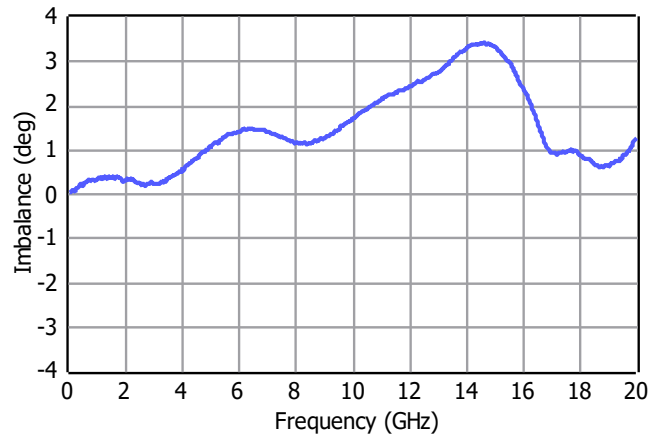
Isolation



Amplitude Imbalance



Phase Imbalance



Return Loss

