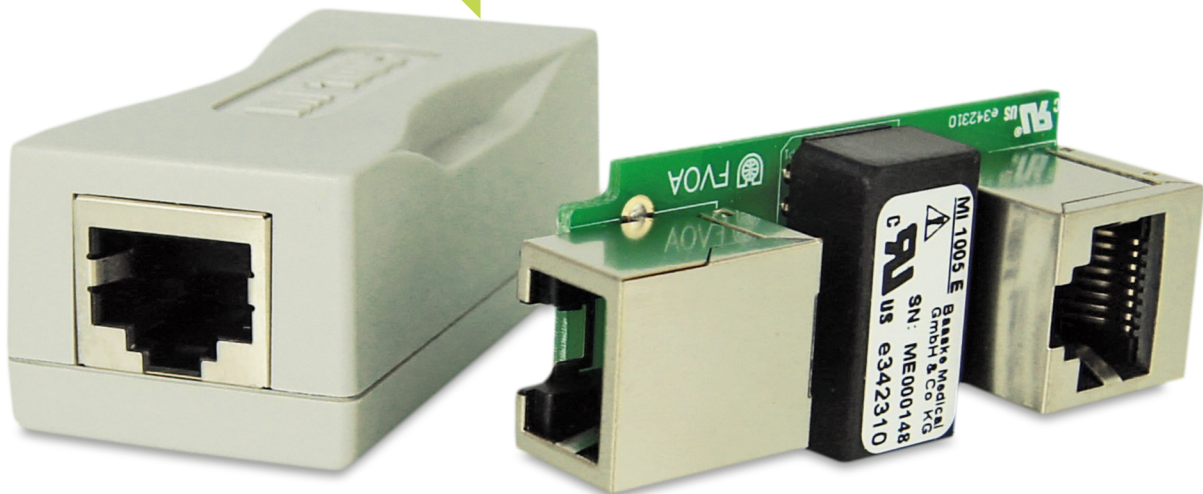


# Network Isolator MED MI 1005 / MI 1005 E

electrical network separation for medical electrical equipment



MED MI 1005

MED MI 1005 E

- ▶ Small dimensions, fits everywhere
- ▶ Protection from unpredictable currents in patient environment
- ▶ quick and easy installation

If PCs or other electrical devices are connected to an Ethernet network in the patient's environment / safety class 3 environment dangerous high leakage currents can appear from other devices that are also connected to network. The MI 1005 blocks these currents and voltages over the copper network. The MI 1005 device has been manufactured using UL94-V0 materials only. Compared to other network isolation devices that are available on the market the MI 1005 is the only device available with a signal isolation strength of 5.000 V within full IEEE 802.3 Gigabit Network support.

## ▶ Network Isolator MED MI 1005 / MI 1005 E

### Technical Data:

Isolation Voltage:	5000 V 50/60 Hz for 1 min
Data Speed:	10/100/1000 Mbit/s
Connectors:	2 x RJ45 input / output
Material:	UL94V-0 / RoHS-compliant
Time between failures:	0.21 x 10 <sup>8</sup> (1 error in 21 million hours)
Standards:	IEC 60601-1 (3rd Edition), IEC 60601-1-2 UL 60601 (UL Listed E342310), IEEE 802.3

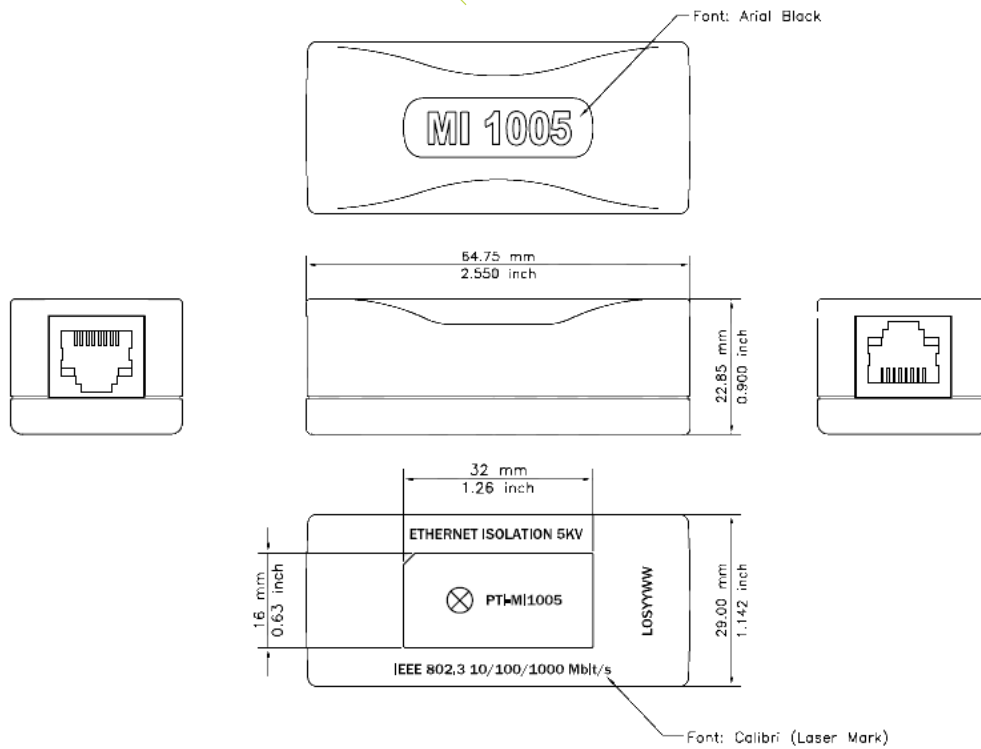
Network Isolator MED MI 1005	Art.No.: 2005674
Network Isolator MED MI 1005 Retail*	Art.No.: 2006484
MI 1005 E Medical Built In Isolator	Art.No.: 2006633

\* Incl. patch cable 25 cm, manual, packing and serial number

# Network Isolator MED MI 1005 / MI 1005 E

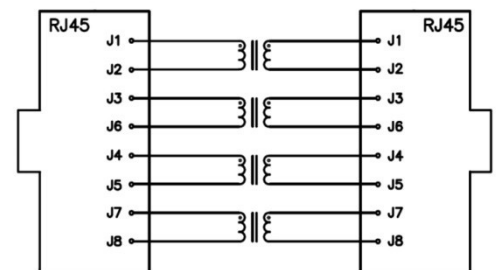
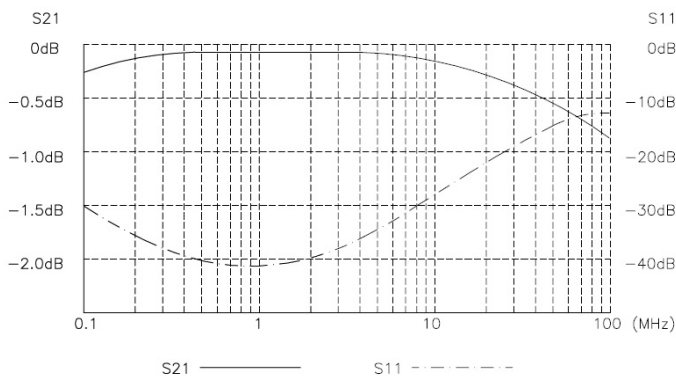
electrical network separation for medical electrical equipment

► Dimensions



► Frequency Range

► Circuit



Changes and errors excepted.