

TRESTON



QuickShip

PRODUCTS

TRESTON BESTSELLERS READY TO SHIP IN 5 DAYS!

Treston Best-sellers, shipped FAST



Wide variety of bench styles

- Choose from 3 frame styles: 4-leg, light motor table, or C-leg manual
- All frames are height adjustable and able to be equipped with casters
- Standard light grey powder-coated ESD paint

Large selection of accessories

- Accessories include: shelves, lighting, power, storage, drawers, and more!

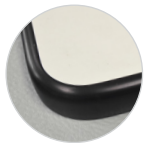
Ready to ship in just 5 days!

- Products ship from Treston warehouse in Canton, GA 30114

Cornerstone



- Light-grey, ESD laminate surface
- Grey 180° rolled front edge
- Thickness 1 3/16 inches

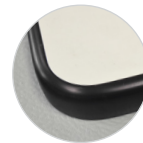


- Grey laminate surface
- Black molded "waterfall" edges
- Thickness 1 3/16 inches

Concept Manual



- Light-grey, ESD laminate surface
- Grey 180° rolled front edge
- Thickness 1 3/16 inches



- Grey laminate surface
- Black molded "waterfall" edges
- Thickness 1 3/16 inches

Workstations

Frame Style	Size W x D (actual top sizes)	Worksurface	Max lbs	Height (inches)	Order No
Cornerstone	48" x 30" (47.2" x 27.8")	Laminate	2000	27.56"-40.55"	14-C12041204
	60" x 30" (59.1" x 27.8")	Laminate	2000	27.56"-40.55"	14-C12041205
	72" x 30" (71.1" x 27.8")	Laminate	2000	27.56"-40.55"	14-C12041206
	48" x 30" (47.2" x 27.8")	ESD Laminate	2000	27.56"-40.55"	14-C12049204
	60" x 30" (59.1" x 27.8")	ESD Laminate	2000	27.56"-40.55"	14-C12049205
	72" x 30" (71.1" x 27.8")	ESD Laminate	2000	27.56"-40.55"	14-C12049206
Concept Manual	48" x 30" (47.2" x 29.1")	Laminate	1100	26.62"-44.34"	US-10049560P
	60" x 30" (59.1" x 29.1")	Laminate	1100	26.62"-44.34"	US-10049562P
	72" x 30" (70.9" x 29.1")	Laminate	1100	26.62"-44.34"	US-10049564P
	48" x 30" (47.2" x 29.1")	ESD Laminate	1100	26.62"-44.34"	US-10049561P
	60" x 30" (59.1" x 29.1")	ESD Laminate	1100	26.62"-44.34"	US-10049563P
	72" x 30" (70.9" x 29.1")	ESD Laminate	1100	26.62"-44.34"	US-10049565P

Order number includes frame and top.

Additional work surface options available in standard offering. See Treston's full line catalog.

Preconfigured Workstations with Uprights

Frame with top + single bay uprights

Frame Style	Size (W x D)	Worksurface	Uprights 53.5"H	Order No
Cornerstone	48" x 30"	Laminate	Single Bay	14-C12041216
	60" x 30"	Laminate	Single Bay	14-C12041217
	72" x 30"	Laminate	Single Bay	14-C12041218
	48" x 30"	ESD Laminate	Single Bay	14-C12049216
	60" x 30"	ESD Laminate	Single Bay	14-C12049217
	72" x 30"	ESD Laminate	Single Bay	14-C12049218
Concept Manual	48" x 30"	Laminate	Single Bay	14-C10041396
	60" x 30"	Laminate	Single Bay	14-C10041397
	72" x 30"	Laminate	Single Bay	14-C10041398
	48" x 30"	ESD Laminate	Single Bay	14-C10049396
	60" x 30"	ESD Laminate	Single Bay	14-C10049397
	72" x 30"	ESD Laminate	Single Bay	14-C10049398



Shown above: Concept bench with single bay uprights
Order No. 14-C10041397

Frame with top + double bay uprights

Frame Style	Size (W x D)	Worksurface	Uprights 53.5"H	Order No
Cornerstone	60" x 30"	Laminate	Double Bay	14-C12041227
	72" x 30"	Laminate	Double Bay	14-C12041228
	60" x 30"	ESD Laminate	Double Bay	14-C12049227
	72" x 30"	ESD Laminate	Double Bay	14-C12049228
Concept Manual	60" x 30"	Laminate	Double Bay	14-C10041644
	72" x 30"	Laminate	Double Bay	14-C10041645
	60" x 30"	ESD Laminate	Double Bay	14-C10049434
	72" x 30"	ESD Laminate	Double Bay	14-C10049435

*Double Bay upright modules not compatible with LMT workstations.



Shown above: Concept bench with double bay uprights
Order No. 14-C10041644



See pages 4-6 for QuickShip accessories! See Treston full line product catalog for additional Treston accessories available for standard delivery.



Please visit us online for our full product offering treston.us

Customize, personalize and reconfigure – it's easy!

Well-chosen accessories optimize workstation functionality and increase usability. When a workstation is well-organized and well-equipped, workflow becomes easier and more efficient, improving ergonomics and making it easier to keep tools in place.

Below are some of Treston's in-stock and ready to ship accessories!



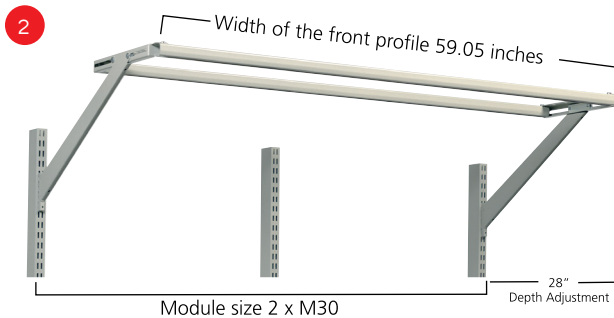
Slotted uprights are the basic element for accessorizing Treston tables. Accessories are attached to Treston tables with the aid of slotted upright modules. The uprights are attached to the back of the table.

1 Slotted upright modules

Size	Order No
	h = 42.32"
1 x M48	US-9074901P
1 x M60	US-9074908P
1 x M72	US-9074909P
2 x M30	US-90349001P
2 x M36	US-90449001P

h = module's height attached from the worksurface

*Double Bay upright modules not compatible with LMT workstations.



2 Light/balancer rail

Module	Width	Max lbs	Order No
M48	47.24"	33	US-91849010P
M60	59.05"	33	US-91849006P
M72	70.86"	33	US-91849008P

Accessories



3 LED Lighting

Description	Size	Order No
24" Dual Intensity LED, balancer rail	22.44" x 1.26" x 1.81"	14-95035171
36" Dual Intensity LED, balancer rail	33.46" x 1.26" x 1.81"	14-95035172
48" Dual Intensity LED, balancer rail	44.48" x 1.26" x 1.81"	14-95035173
24" Dual Intensity LED, magnetic	22.44" x 1.26" x 1.81"	14-95035174
36" Dual Intensity LED, magnetic	33.46" x 1.26" x 1.81"	14-95035175
48" Dual Intensity LED, magnetic	44.48" x 1.26" x 1.81"	14-95035176

4 Tiltable Top Shelf with lip

Module	size W x D inches	max lbs	Order No
M30	M30 x 11.81"	176	TTSM7503-49
M36	M36 x 11.81"	176	TTSM9003-49
M48	M48 x 11.81"	176	TTSM12003-49
M60	M60 x 11.81"	176	TTSM15003-49
M72	M72 x 11.81"	176	TTSM18003-49

5 Steel shelf, with lip, 0° or 20° angle

Module	size W x D inches	max lbs	Order No
M30	28.34 x 11.81	110	US-836028-49
M36	34.25 x 11.81	110	US-852283-49

6 Bin rails (bins sold separately)

module	W x H inches	max lbs	Order No
M30	29.21 x 3.54	110	US-859151-49
M36	35.23 x 3.54	110	US-859152-49
M48	47.04 x 3.54	110	US-859157-49
M60	58.89 x 3.54	110	US-859154-49
M72	70.66 x 3.54	110	US-859155-49

7 Horizontal Power rail

Description	Order No
M30 Bin rail w/6 outlet power	14-9114905
M36 Bin rail w/6 outlet power	14-9114910
M48 Bin rail w/6 outlet power	14-9114915
M60 Bin rail w/6 outlet power	14-9114919
M72 Bin rail w/6 outlet power	14-9114923

8 Vertical Power Rail

Description	Order No
6 outlet power bar with clamp	14-9114928

9 LCD Arms

Description	Size	Max lbs	Order No
LCD holder with double arm (Vesa 75/100)		33	US-93049002P

10 Footrests

Description	Order No
Footrest with massage roller	JT2
ESD Footrest with massage roller	JT2 ESD

11 Casters

Description	Order No
Caster Set Ø 3.93" ESD (2 - locking, 2 - non-locking)	860429-00
Caster Set Ø 3.93" nonESD (2 - locking, 2 - non-locking)	834734-00

Accessories, Bins

Stacking bins

Our stacking bins have been designed for daily use in stores, production facilities and warehouses. These bins have been designed to fit all standard shelves, paternosters and industrial workstations. Bins of the same width stack securely, even if they are of different lengths. Straight sides ensure an efficient use of space.

Stacking bin sets

Description	Order No
4 Stacking bins, blue (6.5" x 4.13" x 2.95")	SBS4-1015-6
4 stacking bins, blue (2) 1525-6 (9.84"x5.87"x5.12") (2) 1520-6 (7.56"x5.87"x4.13")	SBS4-2
4 ESD Stacking bins, black (6.5" x 4.13" x 2.95")	SBS4-1015-4ESD
4 ESD stacking bins, black (2) 1525-4ESD (9.84"x5.87"x5.12") (2) 1520-4ESD (7.56"x5.87"x4.13")	SBS4-2ESD

*Order No includes 4 bins. Individual bins available with standard delivery time.

Stacking bins on the bin rail

Bin rail	M30	M36	M48	M60	M72
1015	7	8	11	14	17
1520	5	6	8	10	12
1525	5	6	8	10	12



Shelf bins

Shelf bins are designed to fit all standard shelves, cabinets and industrial workstations.

Bins of the same width stack securely, even if they are of different lengths. Straight sides ensure an efficient use of space, and the bins are available in several bright colors to facilitate product identification. Each drawer comes with a label and protective cover.

Shelf bin sets

Description	Order No
6 Shelf bins, blue (11.81" x 3.62" x 3.23")	SBS6-3010-6
6 Shelf bins, blue (11.81" x 5.20" x 3.94")	SBS6-3015-6
6 Shelf bins, blue (11.81" x 7.32" x 3.23")	SBS6-3020-6
6 ESD Shelf bins, black (11.81" x 3.62" x 3.23")	SBS6-3010-4ESD
6 ESD Shelf bins, black (11.81" x 5.20" x 3.94")	SBS6-3015-4ESD
6 ESD Shelf bins, black (11.81" x 7.32" x 3.23")	SBS6-3020-4ESD

*Order No includes 6 bins. Individual bins available with standard delivery time.



ESD Storage Cabinets

Cabinets, which combine a stylish industrial design with practical accessories to provide flexible and efficient small parts storage. Available in two cabinet sizes, 21.65" and 11.42" high. A compact storage system: one cabinet offers storage for up to 360 different items. Designed with drawer handles recessed within the frame for additional protection during transport. The cabinets can be wall mounted, placed on the worksurface, or mounted on space-saving turntables.

Small Parts Storage Cabinets - ESD

Order No	Size (D x W x H)	Drawers	Divider
291-4ESD •	7.08" x 12.20" x 11.41"	24 type L-61-4ESD	V-1-4ESD
294-4ESD •	7.08" x 12.20" x 11.41"	12 type L-64-4ESD	V-4-4ESD
551-4ESD •	7.08" x 12.20" x 21.65"	48 type L-61-4ESD	V-1-4ESD
554-4ESD •	7.08" x 12.20" x 21.65"	24 type L-64-4ESD	V-4-4ESD

*Dividers sold separately.



291-4ESD • 294-4ESD • 551-4ESD • 554-4ESD •

Tool Storage System



The original Treston tool storage system requires only 21.5 sq. ft. of floor space and provides 172 sq. ft. of storage space. There is no need to attach it to the floor, as it stands firmly on its own. There is a caster on the lower edge of the panels which makes them easy to move. The load capacity is 220 lbs/panel. A maximum of 10 panels can be attached to the tool storage system.

Tool Storage System

Name	W x D x H inches	Order No
Tool storage system, 4 panels	40.35 x 40.74 x 83.66	830518-07P
Additional panel	.59 x 37.36 x 77.79	830682-07P



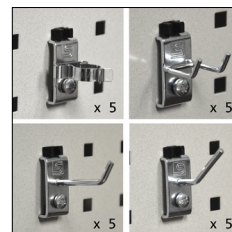
SEE IT IN ACTION! Visit our website to view the demonstration video.
www.treston.us/TKT



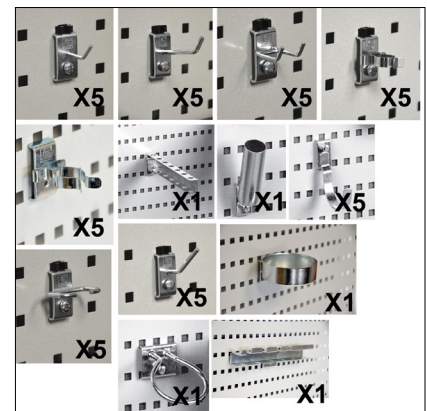
Hook Sets

Hook sets for Treston perforated panels

Description	Order No
Hook set 1 - 20 assorted hooks, basic light hook set	855001-51
Hook set 2 - 45 assorted hooks, basic hook set ideal for hand tools	855002-51



Hook Set 1



Hook Set 2

Terms and Conditions

QuickShip only available for item numbers listed in this brochure. Shipping method must be specified at the time of order. QuickShip products are ready to ship in five days. Treston is not responsible for delayed pickups by freight company. Ship time may vary for large orders over 10 benches.

Freight is FOB shipping point, Canton, GA. Freight will be pre-paid and added to the invoice or freight collect according to your written instructions. We will coordinate shipments with your representatives. If the job site is not ready to accept shipments at the time scheduled, we will not be responsible for moving material in or out of storage or other job site locations and any costs incurred. **"FOB shipping point"** indicates the buyer pays shipping cost to the end user, and takes responsibility for the goods when the goods leave the Treston's premises or the premises of the Treston subcontractor when drop shipping direct from the Treston subcontractor to the end user.

All material is shipped knocked-down unless otherwise noted. Assembly and installation is not included.

Receipt of goods must be inspected and inventoried. Any shortage must be reported in writing within **48 hours**. Treston's freight terms are FOB Canton, GA. Any freight damage should be noted on the freight bill at the time of receipt. Claims should be reported to the freight company directly as soon as possible. Treston will assist in the claims process but cannot file the claims.

Return policy; All returned goods require a RMA number (Return Merchandise Authorization) issued by Treston, Inc. prior to the return of any goods. **All Requests for return authorization must be within 60 days of original invoice.** All returns should be packaged so that it is returned in re-sellable condition; returned freight prepaid. Upon receipt and inspection of product, Treston, inc. will issue an 80% credit against applicable invoice if product is deemed re-sellable. Custom or non-standard products may not be returned.

Authorization of partial shipments requires written approval from the distributor and acceptance by Treston, Inc.

Terms are NET 30 days from the date of invoice.

Warranty: Steel construction and weldments, (5) five years from date of shipment. Mechanical cranks, fixtures and devices, (1) one year from date of shipment. Electrical motors, fixtures, and devices, (1) one year from date of shipment. All in accordance with established Treston warranty statements.

All products are Treston gray (RAL 7035) in color unless otherwise noted.

All items noted with ESD properties are guaranteed to meet ESD requirements specified in the IEC-61340-5-1 standard. Connection, grounding, any local requirements and verification of same is the responsibility of the end user.

Treston will not accept any contract or agreement that contains any penalties or liquidated or actual damages.

All orders are subject to credit approval by Treston, Inc.

Any order under our \$100.00 minimum will be subject to a \$25.00 handling fee. Spare parts excluded.

Packaging

Treston takes pride in protecting our shipments from damage. Shipments are carefully packed to ensure shipments are received damage-free. Upon shipping, "DO NOT STACK" cones are placed on top of the boxes. A photograph of the shipment is placed on the outside of the package to display the state of the shipment as it is shipped. The photograph provides photo proof to the receiver as to the state of the shipment upon departure from origin.



Are you looking for high-quality workspace products, shipped FAST?
Treston QuickShip is the solution! **CONTACT US TODAY!**

USA HEADQUARTERS

Treston Inc • 156 Bluffs Court, Canton, GA 30114

Tel. 800.437.6772 • infousa@treston.com • treston.us