

| REVISIONS | | | | | | |
|---|------|--------|--|-----|------------|----------|
| ZONE | REV. | ECN | DESCRIPTION | BY | DATE | APPROVED |
| ALL SHT1, SHT5 | E | 180004 | CHANGED DRAWING NUMBER ADDED U36-A1070-X000T AND FOOTPRINT FOR SOLDER RING OPTION | KAW | 01/10/2018 | AYZ |
| SHT 1 3-A5, D2, D6 4-A5, D2, D6 5-A5, D6 5-D3 | F | 180049 | REMOVED U36-A1040-X000T OPTION ADDED DIMENSIONS ADDED DIMENSIONS ADDED DIMENSIONS REVISED SOLDER RING PAD DIMENSIONS | KAW | 07/17/2018 | AYZ |

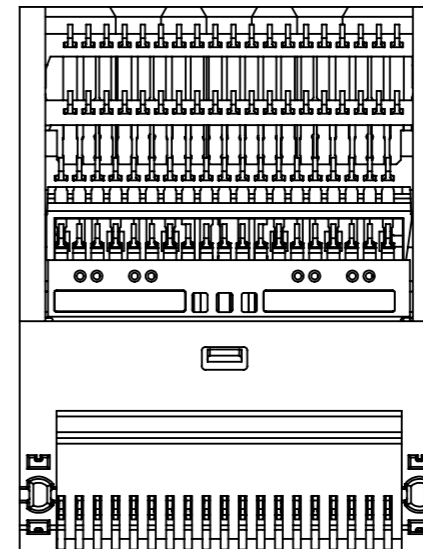
AMPHENOL PART NUMBER CONFIGURATION

UE36-A10X0-X000T

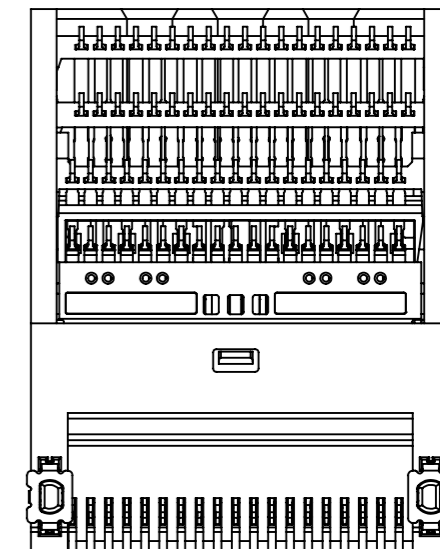
TERMINATION OPTION
1 = STANDARD SINGLE SIDE
7 = SOLDER RINGS

PACKAGING
T = TAPE AND REEL

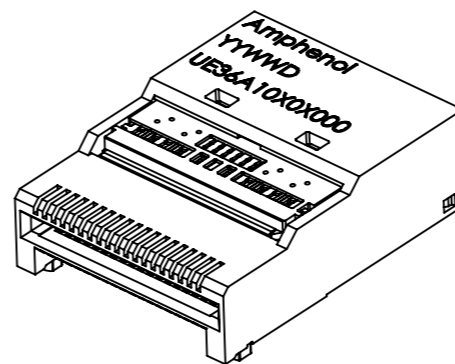
PLATING OPTION
2 = 0.76µm GOLD OVER PALLADIUM-NICKEL
AT MATING AREA
2.54µm-6.35µm MATTE TIN TERMINATION
3 = 0.76µm GOLD AT MATING AREA
2.54µm-6.35µm MATTE TIN TERMINATION
6 = 0.38µm GOLD AT MATING AREA
2.54µm-6.35µm MATTE TIN TERMINATION



UE36-A1010-X000T
(STANDARD SINGLE-SIDE
MOUNTING)



UE36-A1070-X000T
(WITH SOLDER RINGS
FOR BELLY TO BELLY
MOUNTING)



ISOMETRIC VIEW
SCALE 2:1

NOTES:

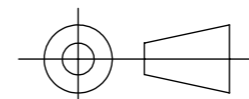
- MATERIAL:** SOLDER PROCESS REFLOW COMPATIBLE LCP, UL 94 V-0
CONTACTS: COPPER ALLOY. SEE PART NUMBER TREE FOR PLATING DETAILS
- RoHS COMPLIANT.
- PERFORMANCE:** 0.50A MAX. SIGNAL CONTACTS
1.0A MAX. POWER CONTACTS
MECHANICAL: 100 MATING CYCLES MIN.
- COMPLIES WITH QSFP-DD MSA.



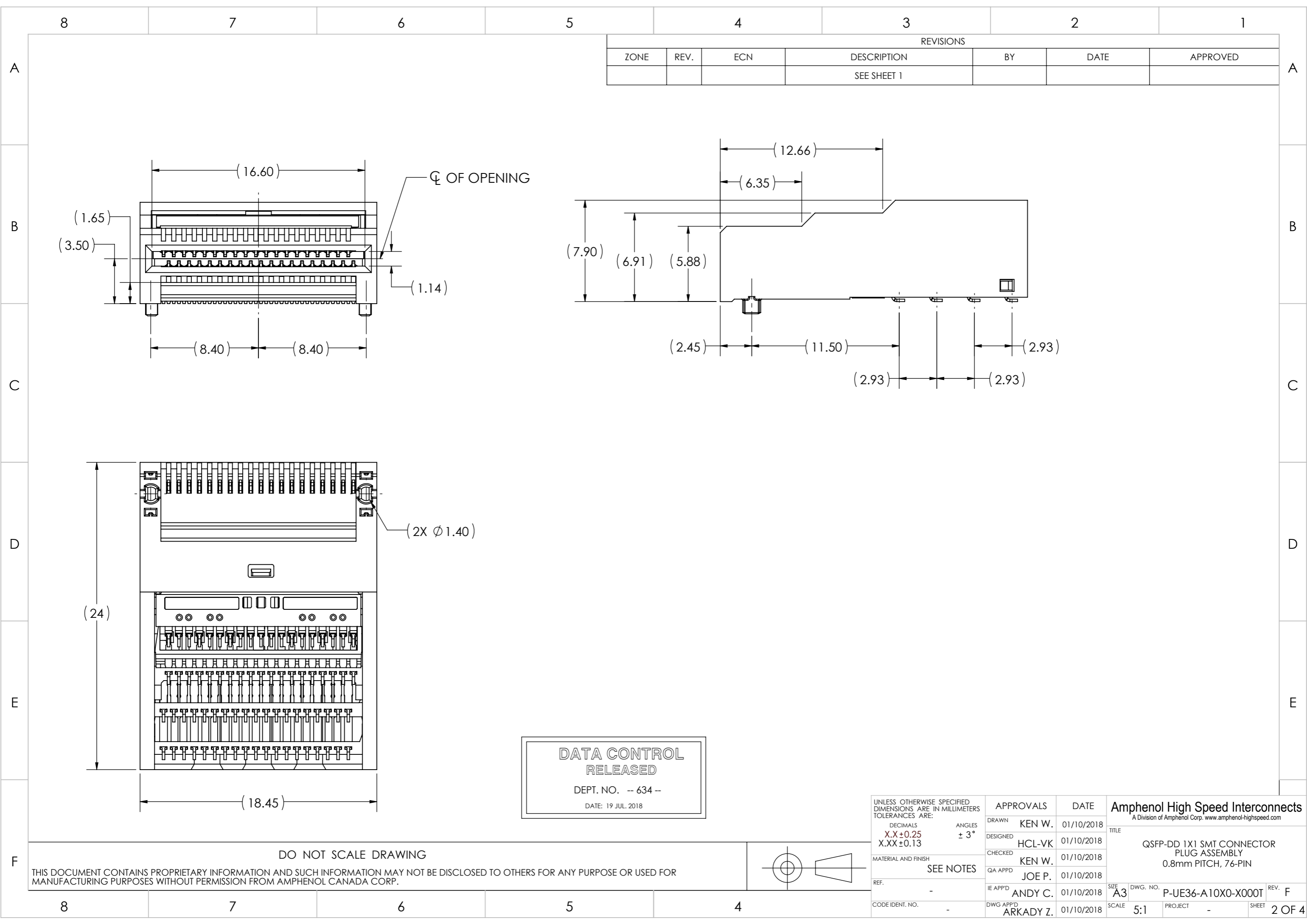
DATA CONTROL
RELEASED
DEPT. NO. -- 634 --
DATE: 19 JUL 2018

DO NOT SCALE DRAWING

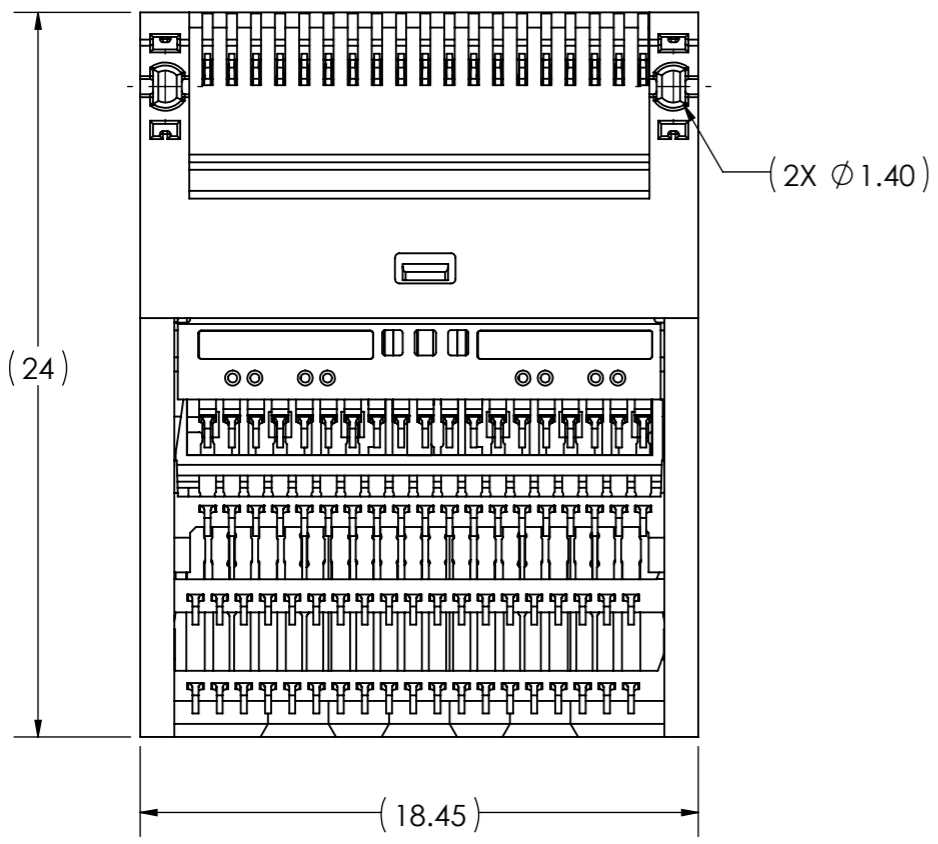
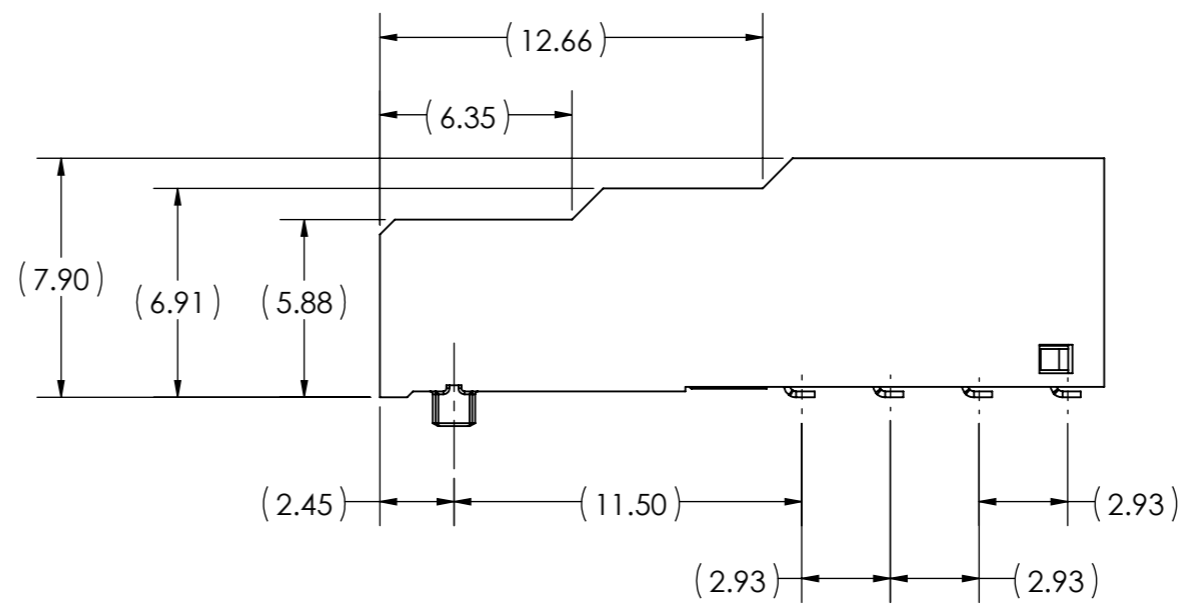
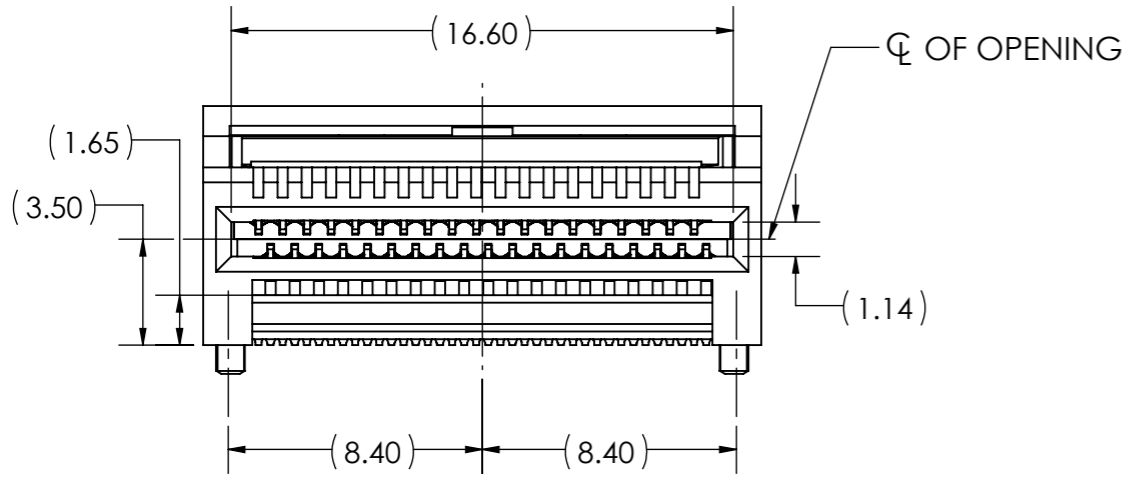
THIS DOCUMENT CONTAINS PROPRIETARY INFORMATION AND SUCH INFORMATION MAY NOT BE DISCLOSED TO OTHERS FOR ANY PURPOSE OR USED FOR MANUFACTURING PURPOSES WITHOUT PERMISSION FROM AMPHENOL CANADA CORP.



| | | | | | | |
|--|--------|-----------|-----------|------------|--|------------------------|
| UNLESS OTHERWISE SPECIFIED DIMENSIONS ARE IN MILLIMETERS TOLERANCES ARE: | | APPROVALS | | DATE | Amphenol High Speed Interconnects A Division of Amphenol Corp. www.amphenol-highspeed.com | |
| DECIMALS | ANGLES | DRAWN | KEN W. | 01/10/2018 | TITLE | |
| X.X ± 0.25 | ± 3° | DESIGNED | HCL-VK | 01/10/2018 | QSFP-DD 1X1 SMT CONNECTOR PLUG ASSEMBLY | |
| X.XX ± 0.13 | | CHECKED | KEN W. | 01/10/2018 | 0.8mm PITCH, 76-PIN | |
| MATERIAL AND FINISH | | QA APP'D | JOE P. | 01/10/2018 | SIZE | DWG. NO. |
| SEE NOTES | | IE APP'D | ANDY C. | 01/10/2018 | A3 | P-UE36-A10X0-X000T |
| REF. | - | DWG APP'D | ARKADY Z. | 01/10/2018 | SCALE | REV. F |
| CODE IDENT. NO. | - | | | | 5:1 | PROJECT - SHEET 1 OF 4 |



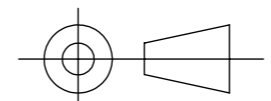
| REVISIONS | | | | | | |
|-----------|------|-----|-------------|----|------|----------|
| ZONE | REV. | ECN | DESCRIPTION | BY | DATE | APPROVED |
| | | | SEE SHEET 1 | | | |



**DATA CONTROL
RELEASED**
 DEPT. NO. -- 634 --
 DATE: 19 JUL. 2018

DO NOT SCALE DRAWING

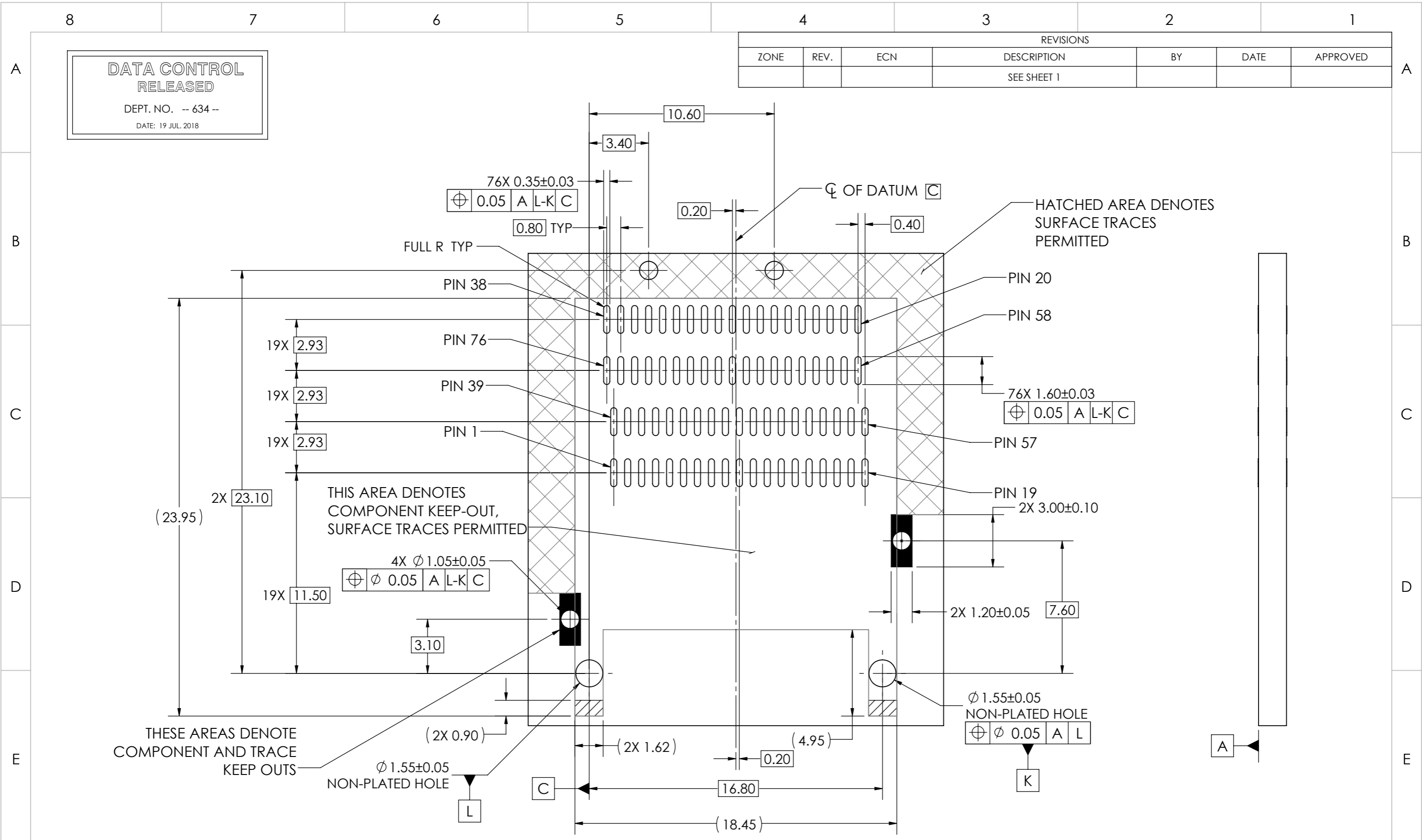
THIS DOCUMENT CONTAINS PROPRIETARY INFORMATION AND SUCH INFORMATION MAY NOT BE DISCLOSED TO OTHERS FOR ANY PURPOSE OR USED FOR MANUFACTURING PURPOSES WITHOUT PERMISSION FROM AMPHENOL CANADA CORP.



| | | | |
|---|---------------------|------------|--|
| UNLESS OTHERWISE SPECIFIED DIMENSIONS ARE IN MILLIMETERS TOLERANCES ARE: DECIMALS ANGLES X.X ± 0.25 ± 3° X.XX ± 0.13 | APPROVALS | DATE | Amphenol High Speed Interconnects <small>A Division of Amphenol Corp. www.amphenol-highspeed.com</small> TITLE QSFP-DD 1X1 SMT CONNECTOR PLUG ASSEMBLY 0.8mm PITCH, 76-PIN |
| | DRAWN KEN W. | 01/10/2018 | |
| | DESIGNED HCL-VK | 01/10/2018 | |
| | CHECKED KEN W. | 01/10/2018 | |
| MATERIAL AND FINISH | QA APP'D JOE P. | 01/10/2018 | SIZE A3 DWG. NO. P-UE36-A10X0-X000T REV. F SCALE 5:1 PROJECT SHEET 2 OF 4 |
| SEE NOTES | IE APP'D ANDY C. | 01/10/2018 | |
| REF. - | DWG APP'D ARKADY Z. | 01/10/2018 | |
| CODE IDENT. NO. - | | | |

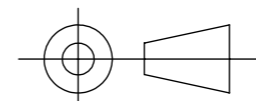
| REVISIONS | | | | | | |
|-----------|------|-----|-------------|----|------|----------|
| ZONE | REV. | ECN | DESCRIPTION | BY | DATE | APPROVED |
| | | | SEE SHEET 1 | | | |

DATA CONTROL
RELEASED
DEPT. NO. -- 634 --
DATE: 19 JUL 2018



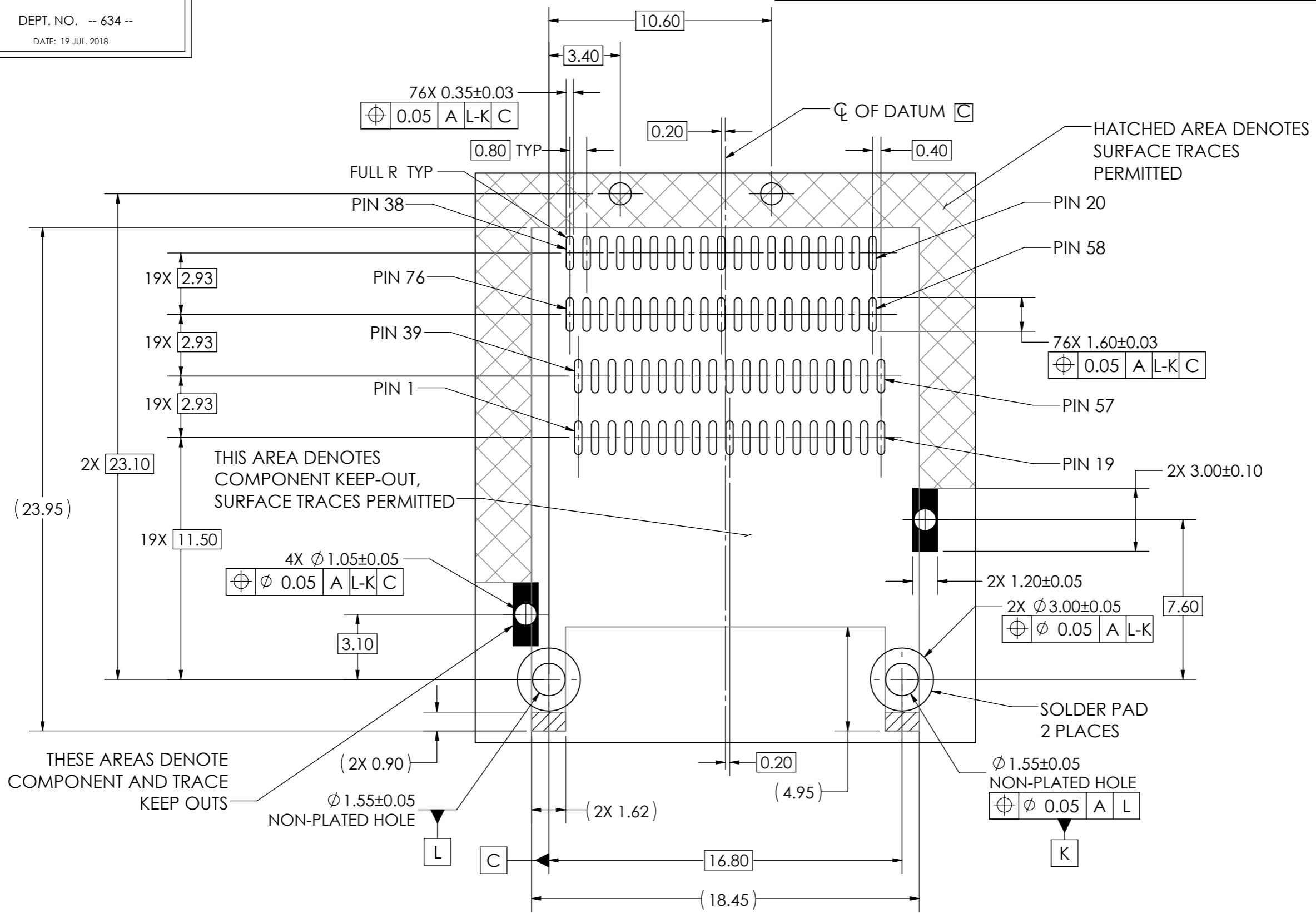
| UNLESS OTHERWISE SPECIFIED DIMENSIONS ARE IN MILLIMETERS TOLERANCES ARE: | | APPROVALS | | DATE | Amphenol High Speed Interconnects | |
|--|-----------|-----------|-----------|------------|---|--------------------|
| DECIMALS | X.X±0.25 | DRAWN | KEN W. | 01/10/2018 | A Division of Amphenol Corp. www.amphenol-highspeed.com | |
| ANGLES | ± 3° | DESIGNED | HCL-VK | 01/10/2018 | TITLE | |
| MATERIAL AND FINISH | SEE NOTES | CHECKED | KEN W. | 01/10/2018 | QSFP-DD 1X1 SMT CONNECTOR PLUG ASSEMBLY | |
| REF. | - | QA APP'D | JOE P. | 01/10/2018 | 0.8mm PITCH, 76-PIN | |
| CODE IDENT. NO. | - | IE APP'D | ANDY C. | 01/10/2018 | SIZE | A3 |
| | | DWG APP'D | ARKADY Z. | 01/10/2018 | DWG. NO. | P-UE36-A10X0-X000T |
| | | | | | SCALE | 5:1 |
| | | | | | PROJECT | - |
| | | | | | SHEET | 3 OF 4 |
| | | | | | REV. | F |

THIS DOCUMENT CONTAINS PROPRIETARY INFORMATION AND SUCH INFORMATION MAY NOT BE DISCLOSED TO OTHERS FOR ANY PURPOSE OR USED FOR MANUFACTURING PURPOSES WITHOUT PERMISSION FROM AMPHENOL CANADA CORP.



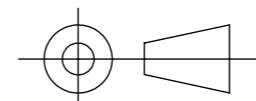
DATA CONTROL
RELEASED
DEPT. NO. -- 634 --
DATE: 19 JUL. 2018

| REVISIONS | | | | | | |
|-----------|------|-----|-------------|----|------|----------|
| ZONE | REV. | ECN | DESCRIPTION | BY | DATE | APPROVED |
| | | | SEE SHEET 1 | | | |



RECOMMENDED PCB LAYOUT
BELLY-TO-BELLY MOUNTING
WITH SOLDER RINGS

DO NOT SCALE DRAWING
THIS DOCUMENT CONTAINS PROPRIETARY INFORMATION AND SUCH INFORMATION MAY NOT BE DISCLOSED TO OTHERS FOR ANY PURPOSE OR USED FOR MANUFACTURING PURPOSES WITHOUT PERMISSION FROM AMPHENOL CANADA CORP.



| | | | | | | | |
|--|-----------|-----------|-----------|------------|--|--|--------|
| UNLESS OTHERWISE SPECIFIED DIMENSIONS ARE IN MILLIMETERS TOLERANCES ARE: | | APPROVALS | | DATE | | Amphenol High Speed Interconnects A Division of Amphenol Corp. www.amphenol-highspeed.com | |
| DECIMALS | ANGLES | DRAWN | KEN W. | 01/10/2018 | TITLE | | |
| X.X±0.25 | ± 3° | DESIGNED | HCL-VK | 01/10/2018 | QSFP-DD 1X1 SMT CONNECTOR PLUG ASSEMBLY | | |
| X.XX±0.13 | | CHECKED | KEN W. | 01/10/2018 | 0.8mm PITCH, 76-PIN | | |
| MATERIAL AND FINISH | SEE NOTES | QA APP'D | JOE P. | 01/10/2018 | SIZE | DWG. NO. | REV. |
| | | IE APP'D | ANDY C. | 01/10/2018 | A3 | P-UE36-A10X0-X000T | F |
| REF. | - | DWG APP'D | ARKADY Z. | 01/10/2018 | SCALE | PROJECT | SHEET |
| CODE IDENT. NO. | - | | | | 5:1 | - | 4 OF 4 |