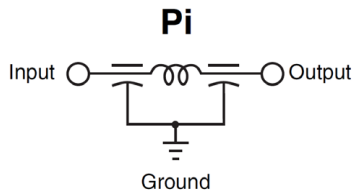


Square Surface Mount (SSM) & Round Surface Mount (RSM) Filters

Low Pass EMI Filters

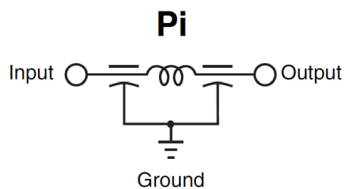
SSM Series



Working Voltage	100 VDC
Test Voltage	250 VDC
Current	Max. 10 Amps
Insulation Resistance	Min. 10^4 M Ω
Terminations	Silver Ni-Tin Plated
Soldering Conditions	Max. 250°C -5 sec.
Marking	None
Packaging	Bulk or tape and reel

Note: Insertion loss shown for the following SSM values* only: 101Z, 501P, and 202P

RSM Series

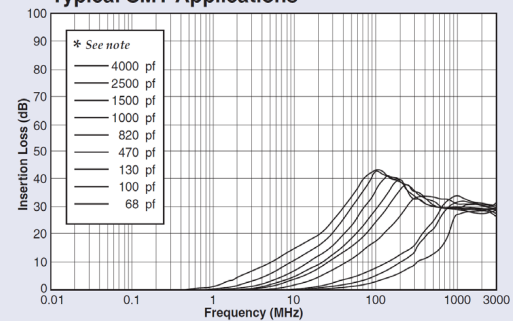


Working Voltage	100 VDC
Test Voltage	250 VDC
Current	Max. 10 Amps
Insulation Resistance	Min. 10^4 M Ω
Terminations	Silver Ni-Tin Plated
Soldering Conditions	Max. 250°C -5 sec.
Marking	None
Packaging	Bulk or tape and reel

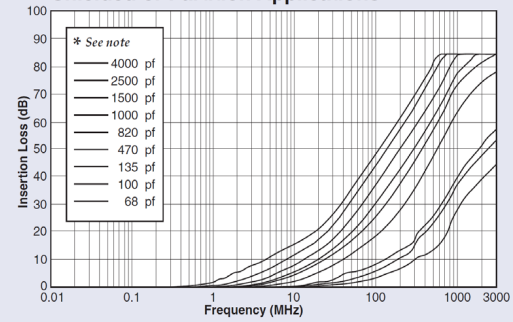
Note: Insertion loss shown for the following RSM values only: 152P and 402Z

Pi Insertion Loss

Typical SMT Applications

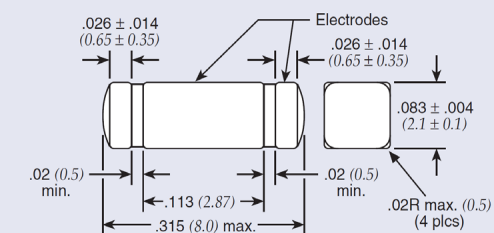


Shielded or Partition Applications

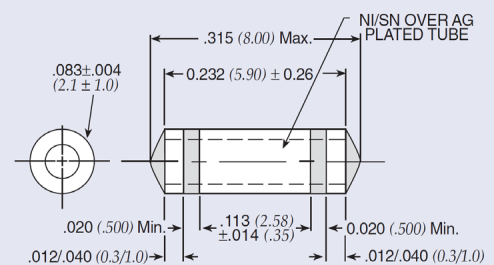


*Capacitance values for IL curves are displayed left to right in the order shown. Additional IL charts available by request.

SSM



RSM



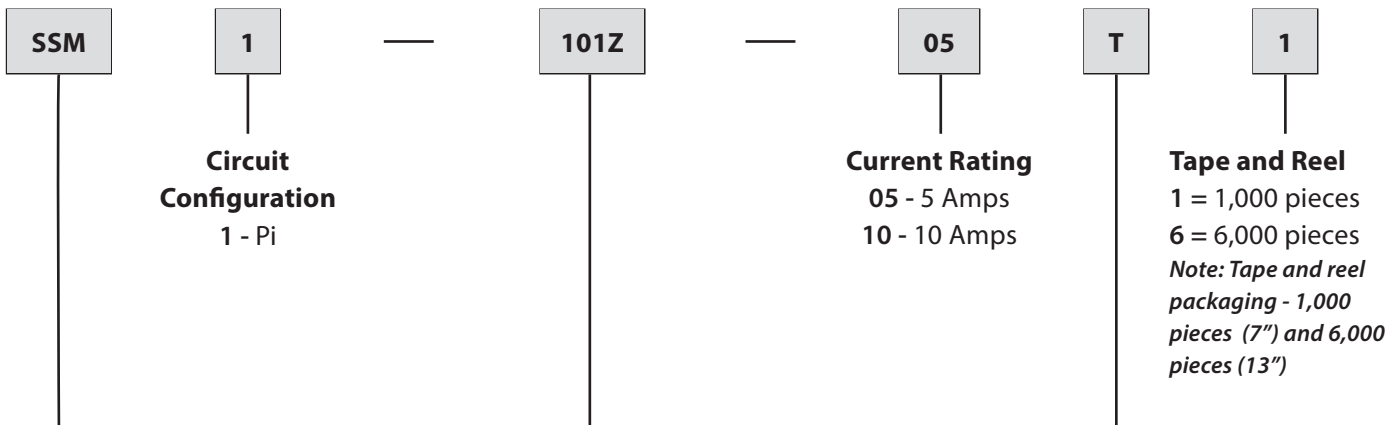
Dimensions in inches (mm)

Square Surface Mount (SSM) & Round Surface Mount (RSM) Filters

Low Pass EMI Filters

SSM & RSM Ordering Information

Example: SSM1-101Z-05T



Style	Code	Value	Tolerance	Packaging
SSM (Square)	101Z	100pF	+80/-20%	T = Tape and reel packaging
RSM (Round)	501P	500pF	+100/-0%	R = Bulk packaging
	152P	1500pF	+100/-0%	
	202P	2000pF	100/-0%	
	402E	4000pF	±25	
	402Z	4000pF	+80/-20%	

† Also available through APITech's authorized distributors.
 € Also available through APITech's authorized European distributors/agents.
 † SSM1-152P-05-T1 €

