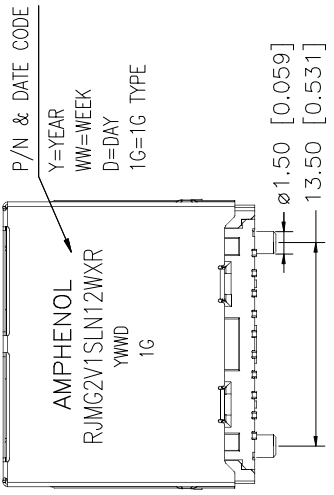
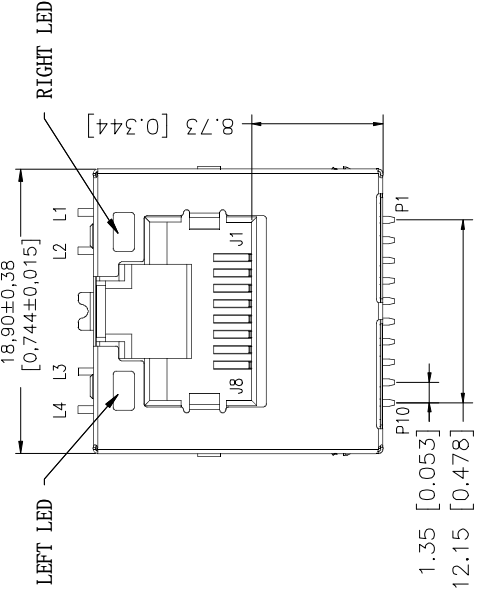
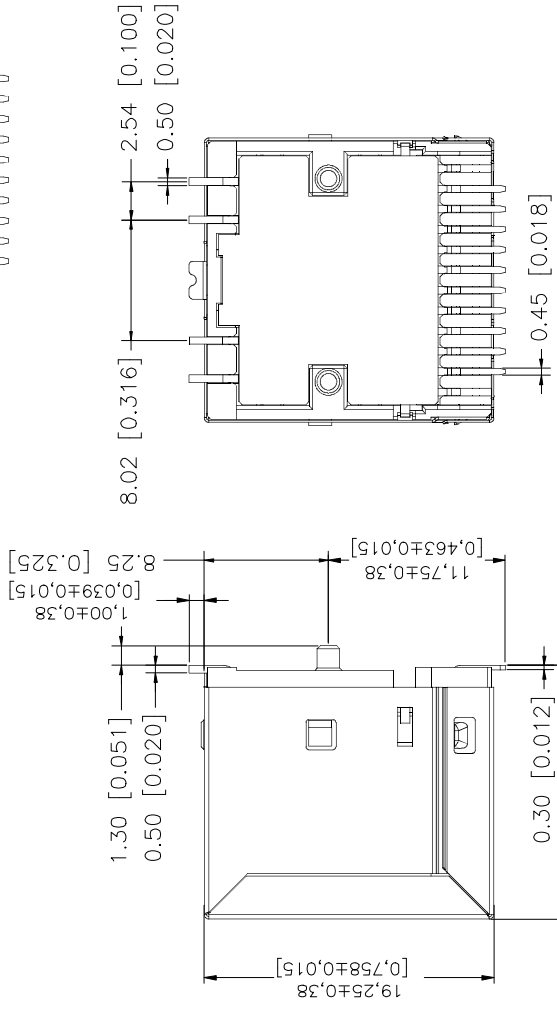
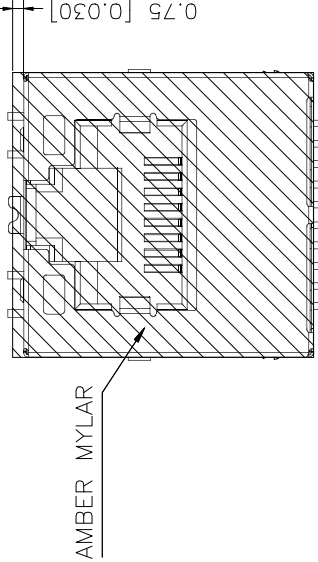
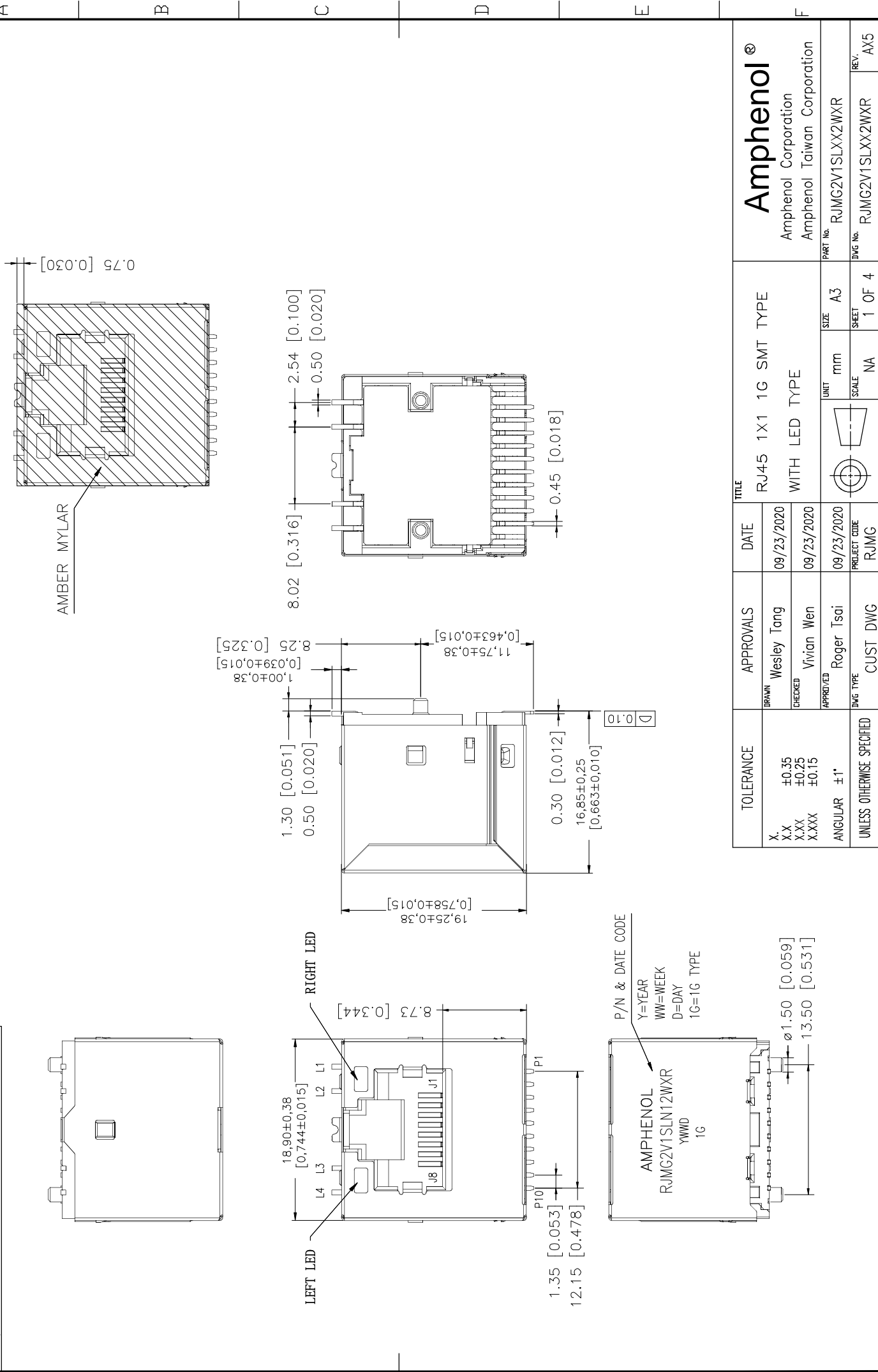


This document is the property of Amphenol Corporation and is delivered to the express consent of the recipient. It is not to be disclosed, reproduced, copied, or used in any manner without the prior consent of Amphenol Corporation. Amphenol Corporation grants no right to disclose or to use any information in this document.

The marking on this product doesn't contain environmental hazardous materials per RoHS Specification SS-00259 for Sony GP compliant or per directive 2011/65/EU for RoHS compliant.

# CUSTOMER DRAWING

REVISIONS			
SYM	ECN No.	DESCRIPTION	DATE
AX4	/	UPDATE THE DRAWING	09/02/2020
AX5	/	UPDATE THE DRAWING	09/23/2020



TOLERANCE		APPROVALS		DATE		TITLE		
X.X	±0.35	DRAWN	Wesley Tang	09/23/2020	RJ45 1X1 1G SMT TYPE			
X.XX	±0.25	CHECKED	Vivian Wen	09/23/2020	WITH LED TYPE			
X.XXX	±0.15	APPROVED	Roger Tsai	09/23/2020	UNIT	mm	SIZE	A3
ANGULAR	±1°	DWG TYPE	CUST DWG	RJMG	SCALE	NA	SHEET	1 OF 4
UNLESS OTHERWISE SPECIFIED							PART No.	RJMG2V1SLXX2WXR
							DWG No.	RJMG2V1SLXX2WXR
							REV.	AX5

**Amphenol®**  
Amphenol Corporation  
Amphenol Taiwan Corporation

This document is the property of Amphenol Corporation and is delivered in confidence. It is not to be disclosed, reproduced, copied, used, or transmitted in any form or by any means, electronic, mechanical, photocopying, recording, or otherwise, without the prior consent of Amphenol Corporation. If you are not an authorized recipient, you are notified that disclosing, copying, distributing, or taking any action in reliance on the contents of this information is strictly prohibited.

The marking on this product doesn't contain environmental hazardous materials per Material Specification SS-00259 for "Sn/Pb compliant" or per directive 2011/65/EU for RoHS compliant.

# CUSTOMER DRAWING

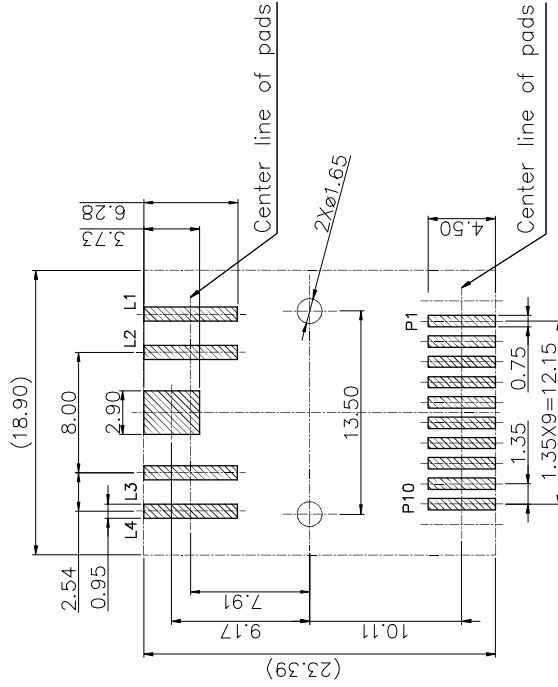
SYM	ECN No.	REVISIONS	DATE	APPROVED
AX4	/	UPDATE THE DRAWING	09/02/2020	Roger Tsai
AX5	/	UPDATE THE DRAWING	09/23/2020	Roger Tsai

- MATERIAL
  - HOUSING : PA6T, BLACK, UL 94V-0
  - SPACER : PA6T, BLACK, UL 94V-0
  - RJ CONTACTS : PHOSPHOR BRONZE, T=0.35mm
  - PLATING : SELECT GOLD 15U" ON CONTACT AREA, 100U" MIN. TIN PLATING ON SOLDER TAILS, 50U" MIN. NICKEL OVERALL
  - SOLDER TAIL TERMINAL : BRASS, T=0.30mm
  - PLATING : 100U" MIN. TIN, 50U" MIN. NICKEL OVERALL
  - SHIELD : STAINLESS, THICKNESS=0.15MM, 30U" MIN. NICKEL PLATING
- RJ45 SPECIFICATIONS
  - CONTACT RESISTANCE: 30mΩ Max.
  - INSERTION FORCE WITH THE LATCH DEPRESSED : 22N MAX.
  - REMOVAL FORCE WITH THE LATCH DEPRESSED : 44N MAX.
  - DURABILITY : 750 CYCLES
- OPERATING AND STORAGE TEMPERATURE
  - OPERATING TEMPERATURE : -40°C TO +85°C
  - STORAGE TEMPERATURE : -40°C TO +85°C
- TEMPERATURE CONDITION OF REFLOW SOLDERING: 260±3°C, 10SEC MAX.

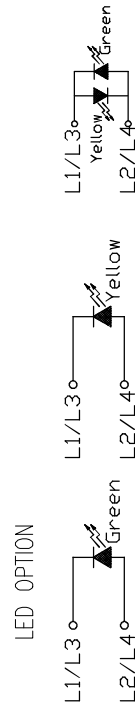
PART NO. RJMG2V1SL X X 2W X R

RIGHT LED 1 CODE [Packaging: Tape&Reel]  
LEFT LED 2 CODE

- 1: Green  
N: Yellow  
4: Bi-color Green/ Yellow



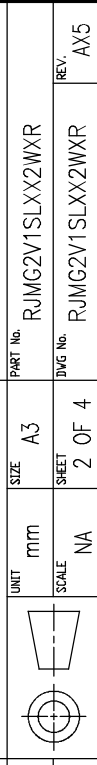
Recommended PCB Layout  
(Tol: ±0.05)



Emitting Color	$\lambda_p$ (nm)	Vf @If=20mA	Ir @Vr=5V
Green	570	1.7V~2.6V	10μA max.
Yellow	590	1.7V~2.6V	10μA max.

TOLERANCE	APPROVALS	DATE	TITLE
X.X ±0.35	Wesley Tang	09/23/2020	RJ45 1X1 1G SMT TYPE
X.XX ±0.25	Vivian Wen	09/23/2020	WITH LED TYPE
X.XXX ±0.15	Roger Tsai	09/23/2020	
ANGULAR ±1°	CUST DWG	RJMG	
UNLESS OTHERWISE SPECIFIED			

<b>Amphenol®</b>	
Amphenol Corporation Amphenol Taiwan Corporation	
PART No.	RJMG2V1SLXX2WXR
DWG No.	RJMG2V1SLXX2WXR
REV.	AX5

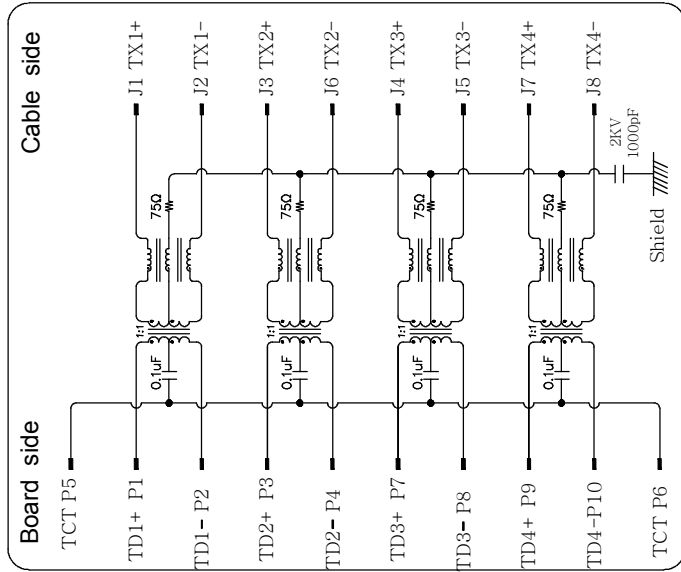


This document is the property of Amphenol Corporation and is delivered in confidence. It is not to be disclosed, reproduced, copied, used, or disseminated in any form or by any means other than Amphenol Corporation without its prior consent, and that no right is granted to disclose or to use any information in this document.

The marking on this product doesn't contain environmental hazardous materials per Material Specification SS-00259 for Sony GP compliant or per directive 2011/65/EU for RoHS compliant.

# CUSTOMER DRAWING

ELECTRONICAL SCHEMATIC DRAWING:



## ELECTRICAL CHARACTERISTICS :

- INSERTION LOSS :
  - 1~100 MHz -1.0dB MAX.
- RETURN LOSS(LOAD 100Ω) :
  - 1~30 MHz -18dB MIN.
  - 30~60 MHz -16dB MIN.
  - 60~80 MHz -12dB MIN.
  - 80~100 MHz -10dB MIN.
- COMMON MODE REJECTION
  - 1~100 MHz -30dB MIN.
- CROSS TALK
  - 1~100 MHz -30dB MIN.
- INDUCTANCE @ 100KHz, 0.1V, 8mA DC BIAS
  - (P1-P2),(P3-P4),(P7-P8),(P9-P10) : 350 uH MIN.
- DCR
  - (J1-J2),(J3-J6),(J4-J5),(J7-J8) : 1.2 Ω MAX.
- HI-POT TEST
  - BOARD SIDE TO CABLE SIDE : 2250VDC 60S
- TURNS RATION 100KHz
  - (P1-P2) : (J1-J2) = 1:1 ±%3
  - (P3-P4) : (J3-J6) = 1:1 ±%3
  - (P7-P8) : (J4-J5) = 1:1 ±%3
  - (P9-P10) : (J7-J8) = 1:1 ±%3

SYM	ECN No.	DESCRIPTION	DATE	APPROVED
AX4	/	UPDATE THE DRAWING	09/02/2020	Roger Tsai
AX5	/	UPDATE THE DRAWING	09/23/2020	Roger Tsai

TOLERANCE	APPROVALS	DATE	TITLE
X. X.X X.XX X.XXX	DRAWN Wesley Tang	09/23/2020	RJ45 1X1 1G SMT TYPE
	CHECKED Vivian Wen	09/23/2020	WITH LED TYPE
ANGULAR ±1°	APPROVED Roger Tsai	09/23/2020	
UNLESS OTHERWISE SPECIFIED	DWG TYPE CUST DWG	PROJECT CODE RJMG	
		UNIT mm	SIZE A3
		SCALE NA	SHEET 3 OF 4
		PART No. RJM2V1SLXX2WXR	REV. AX5
		DWG No. RJM2V1SLXX2WXR	

**Amphenol®**

Amphenol Corporation  
Amphenol Taiwan Corporation

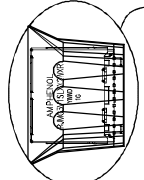
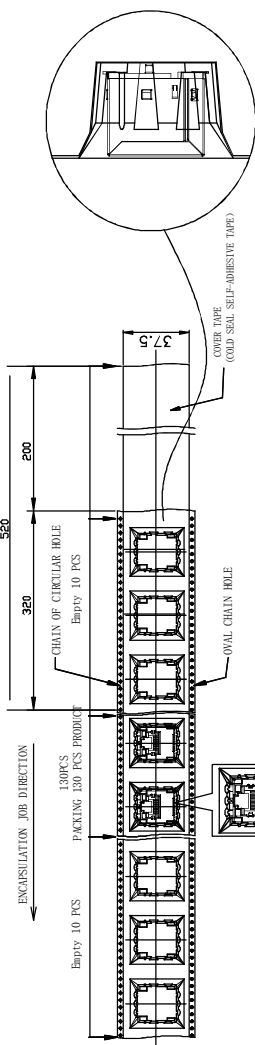
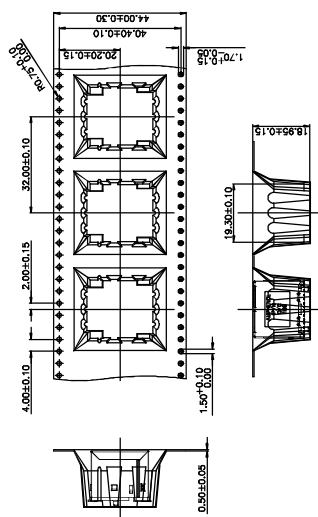
PART No. RJM2V1SLXX2WXR  
DWG No. RJM2V1SLXX2WXR  
REV. AX5

This document is the property of Amphenol Corporation and is delivered in confidence. It is not to be disclosed, reproduced, copied, or used in any manner without the prior consent of Amphenol Corporation. If you are not an authorized recipient, you are notified that disclosing, copying, distributing, or taking any action in reliance on the contents of this information is strictly prohibited.

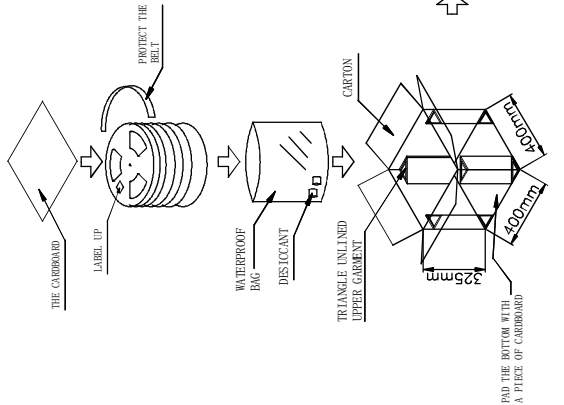
The marking on this product doesn't contain environmental hazardous materials per RoHS Specification SS-00259 for Sony GP compliant or per directive 2011/65/EU for RoHS compliant.

# CUSTOMER DRAWING

SYM	ECN No.	DESCRIPTION	DATE	APPROVED
AX4	/	UPDATE THE DRAWING	09/02/2020	Roger Tsai
AX5	/	UPDATE THE DRAWING	09/23/2020	Roger Tsai



- PACKAGING SPECIFICATIONS:**
1. PAD A PIECE OF CARDBOARD AT THE BOTTOM OF THE OUTER BOX
  2. PUT ONE HORNED SHIRT AT EACH OF THE FOUR CORNERS OF THE OUTER CASE
  3. THE LABEL SHOULD BE POSTED ON THE OVAL HOLE SURFACE OF THE CARRIER BELT, AND THE REEL LABEL SHOULD BE FACING UP
  4. LAY THE ROLLED PRODUCT FLAT IN THE WATERPROOF BAG
  5. PUT THE PACKAGED PRODUCT INTO THE OUTER BOX
  6. PUT A PIECE OF CARDBOARD ON TOP
  7. LABEL ON THE OUTSIDE OF THE BOX



- NOTES:**
1. PACKING CONFORMS EIA-481-B STANDARDS.
  2. 10 SPROCKET HOLE PITCH CUMULATIVE.
  3. CARRIER CAMBER IS WITHIN 1MM IN 250MM.
  4. MATERIAL: PET.
  5. PACKING LENGTH PER 15" REEL: 4.8 METERS.
  6. COMPONENT LOADS FOR EACH 15" VOLUME: FRONT EMPTY 10 + 130 PCS + BACK EMPTY 10.

PART NAME	PCS/REEL	REEL/CARTON	PCS/TOTAL
RJ45 1X1	130	6	780

TOLERANCE	APPROVALS	DATE	TITLE
X.X ±0.35 X.XX ±0.25 X.XXX ±0.15	Wesley Tang Vivian Wen Roger Tsai	09/23/2020 09/23/2020 09/23/2020	RJ45 1X1 1G SMT TYPE WITH LED TYPE
ANGULAR ±1° UNLESS OTHERWISE SPECIFIED	CUST DWG	RJMG	

UNIT	SCALE	SHEET	REV.
mm	NA	4 OF 4	AX5

PART No.	DWG No.
RJMG2V1SLXX2WXR	RJMG2V1SLXX2WXR

SIZE	REV.
A3	AX5

Amphenol®
Amphenol Corporation
Amphenol Taiwan Corporation