

REV	ECN, ERN NO.	DATE	APPRD.
H	PRODUCT DRAWING (EAR 14498)	NOV9/16	K.L.

ORDERING CODE: F C E 1 7 - E 0 9 P A - 4 4 0 G

SERIES
FC E17=FILTERED D-SUB, R/H/S
SIZE/NUMBER OF CONTACTS
E09, A15, B25, OR C37

CONNECTOR STYLE
P=PIN
S=SOCKET
TERMINATION TYPE
A=3/18" [8.08] FOOTPRINT

CONTACT FINISH/GOLD THICKNESS
NO DIGIT=STANDARD 15 MICRONS
[0.38 MICRONS] GOLD ON
MATING AREA
G=50 MICRONS [1.27 MICRONS]
GOLD ON MATING AREA
MODIFIER
0=STANDARD
FILTER CAPACITANCE
D=50 pF 5=1000 pF
B=100 pF 7=1200 pF
E=180 pF 0=180 pF
F=330 pF 6=1500 pF
L=380 pF E=2200 pF
J=470 pF 9=5600 pF
4=820 pF 8=47000 pF
N=NO FILTERS

REFER TO AMPHENOL
CATALOGUE FOR
PERFORMANCE CHARACTERISTICS

NOTES:
1. MATERIALS: ALL MATERIALS ARE ROHS COMPLIANT.
- SHELL: STEEL, TIN PLATED
- CONTACTS: PHOSPHOR BRONZE, PLATED WITH GOLD OVER 50µ" [1.27 MICRONS] MINIMUM NICKEL IN THE MATING AREA AND 100µ" [2.54 MICRONS] MINIMUM MATTE TIN ON THE TAILS.
- INSULATOR: ENGINEERING THERMOPLASTIC, GLASS REINFORCED, UL FLAMMABILITY RATING 94V-0, COLOUR: BLACK
- BOARDLOCK: COPPER ALLOY, TIN PLATED
- MOUNTING HARDWARE: STEEL OR COPPER ALLOY, TIN OR NICKEL PLATED.
2. CONTACT RESISTANCE: 15 MILLIOHMS MAXIMUM
3. INSULATION RESISTANCE: 3000 MEGOHMS MINIMUM
4. CURRENT RATING: 5 AMPS MAXIMUM
5. OPERATING TEMPERATURE: -40°C TO 85°C
6. TOLERANCE UNLESS INDICATED OTHERWISE: ±.005 [0.13]

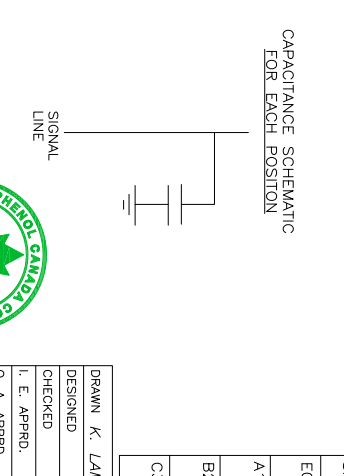
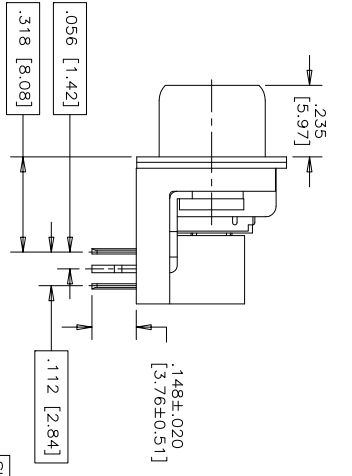
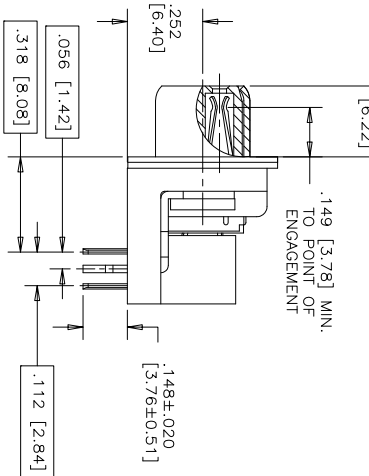
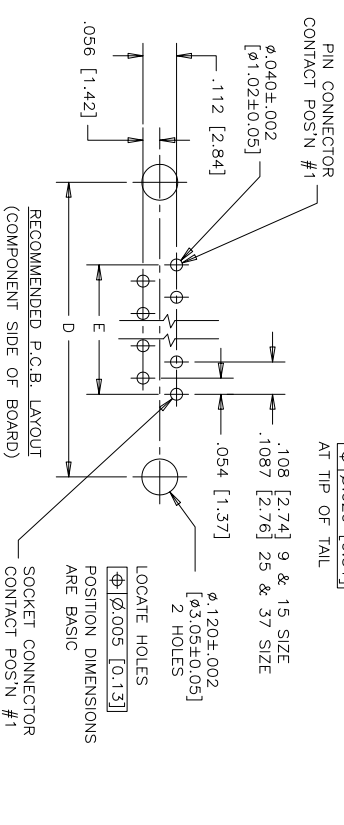
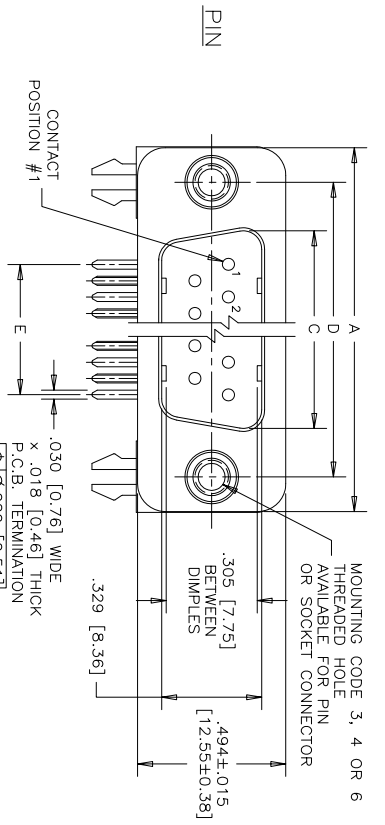
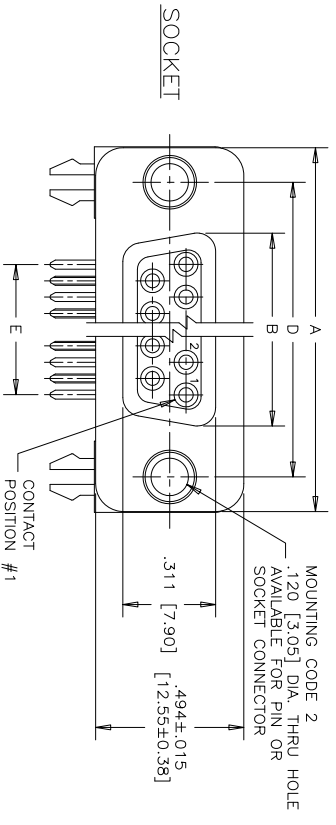
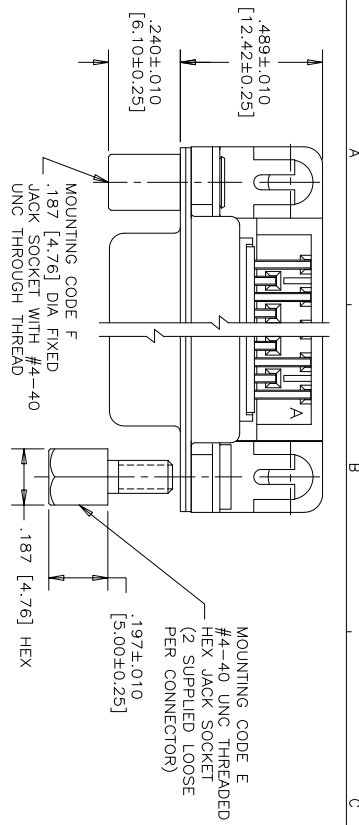
SIZE STYLE	A±.015 [0.38]	B±.005 [0.13]	C±.005 [0.13]	D±.005 [0.13]	E BSC.
E09 PIN	1.213 [30.81]	-.643 [16.33]	.666 [16.92]	.984 [24.99]	.432 [10.97]
A15 PIN	1.541 [39.14]	-.971 [24.66]	.994 [25.25]	1.312 [33.32]	.756 [19.20]
B25 PIN	2.088 [53.04]	1.511 [38.38]	1.534 [38.96]	1.852 [47.04]	1.304 [33.12]
C37 PIN	2.729 [69.32]	2.159 [54.84]	2.182 [55.42]	2.500 [63.50]	1.956 [49.68]

Amphenol Canada Corp.

FC E17 SERIES FILTERED D-SUB CONNECTOR, PIN & SOCKET, RIGHT ANGLE .318 [8.08] F/P, PLASTIC MOUNTING BRACKET & BOARDLOCK, ROHS COMPLIANT

DATE	APPROV/DES
DESIGNED	K. LAM/BIE
CHECKED	
L. E. APPRD.	
O. A. APPRD.	
DWG. APPRD.	
ENG. REL. NO.	
REF. EAR #12701	
DIMENSIONS ARE IN CODE ID. NO.	
INCHES [mm]	03554

DWG	DRAWING NO.	SCALE	WT.	SURF.	SHEET	REV.
C	P-FC E17-XXXXA-XXOX	3/1			1 OF 1	H



CAPACITANCE SCHEMATIC FOR EACH POSITION

SIGNAL LINE

THIS DOCUMENT CONTAINS PROPRIETARY INFORMATION AND SUCH INFORMATION MAY NOT BE DISCLOSED TO OTHERS FOR ANY PURPOSE OR USED FOR MANUFACTURING PURPOSES WITHOUT WRITTEN PERMISSION FROM AMPHENOL CANADA CORP.

