

rev	ecn no	dr	date
F	---	JAR	2002/02/28
G	LS05-006	MPE	2005/04/14
H	LS06-0097	LGO	2006/07/27
J	LS06-0029	MPE	2008/01/28
K	F09-0054	LSA	2009/06/10
L	F10-0031	GPE	2010/04/12
M	F-35874	DDE	2020/01/10

PLATING ACTIVE ZONE			CHARACTERISTICS					
500 mating/unmating Ni: 2µm 0/+2µm Au: 1.27µm min	500 mating/unmating Cu : flash Ni P : 2µm 0/+2µm Au: 0.2µm min (equivalent 0.8µm Au)	200 mating/unmating Cu : flash Ni P : 2µm 0/+2µm Au: 0.15µm min (equivalent 0.4µm Au)	CURRENT max A	AWG WIRE	mm ² AREA	∅A ⁺⁰ _{-0.05}	∅B ⁺⁰ _{-0.05}	Clip colour
8638PsC4007LF	8638PSC4006LF	8638PSC4005LF	40	8-10	5-8	4.70	5.50	BLUE
8638PSC3007LF	8638PSC3006LF	8638PSC3005LF	30	9	6	3.75	4.75	WHITE
8638PSC2007LF	8638PSC2006LF	8638PSC2005LF	20	12-14	2-3	2.80	3.70	RED
8638PSC1007LF	8638PSC1006LF	8638PSC1005LF	10	16-18	0.9-1.3	1.80	2.55	BLACK

NOTE: RoHS INFORMATIONS

- The "LF" products meet European union Directives and regulations as described in GS-22-008
- Termination plating spec: Sn pure matte
- Packaging spec: see GS-14-920

Materials and finish

Active zone: CuZn40 Pb3. Plating: see table
Termination zone (crimping sleeve): CuZn40Pb3
Plating 2µm 0/+2µm Cu - 3µm 0/+3µm Tin pure matte
Clip : Thermoset plastic

Technical characteristics

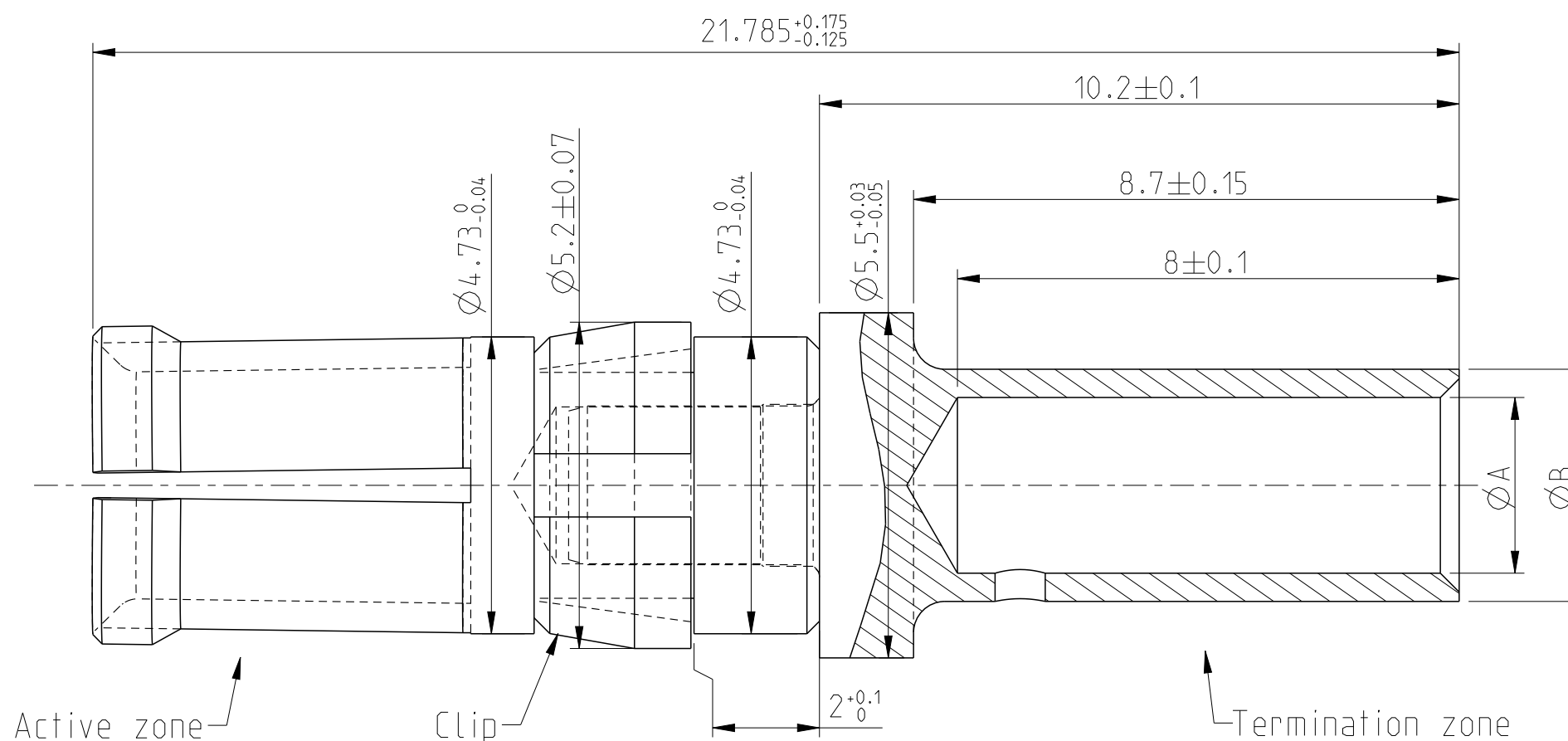
Peak voltage: 750 Veff.
Operating voltage: 500 Veff.
Temperature range -55 °C +125 °C
Packaged per 100
Current capability : see table

Mechanical characteristics :

Crimping test: according to MILC39029
Mechanical endurance: 200 or 500 matings/unmatings (see table).
Contact insertion force in insulator:
60N maxi in a hole of 4.80 mm

Examination of product:

Remove all burrs and sharp edges 0.08 maxi
No scratch allowed



spec ref	dr	Alexandre Parr	2010/04/16	projection	mm	size	A3	scale	10:1			
tolerance std	eng	Perrin, Emilie	2020/01/10			ecn no	ELX-F-35874-1	rel level	Released			
ISO 405 ISO 1101	chr	-	-									
	appr	Wollin, Severi	2020/01/13	product family	-							
surface	linear	0.X	±	Amphenol FCI			title	FEMALE POWER CONTACT FOR CRIMPED CONNECTION	dwg no	C01-8638-0326	rev	M
ISO 1302	angular	0°	±°	cat. no.	-	Product - Customer Drw	sheet 1 of 1					