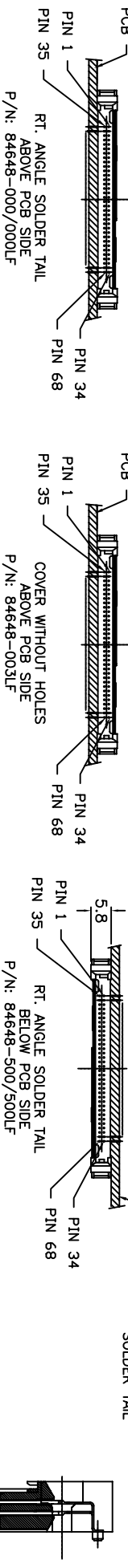
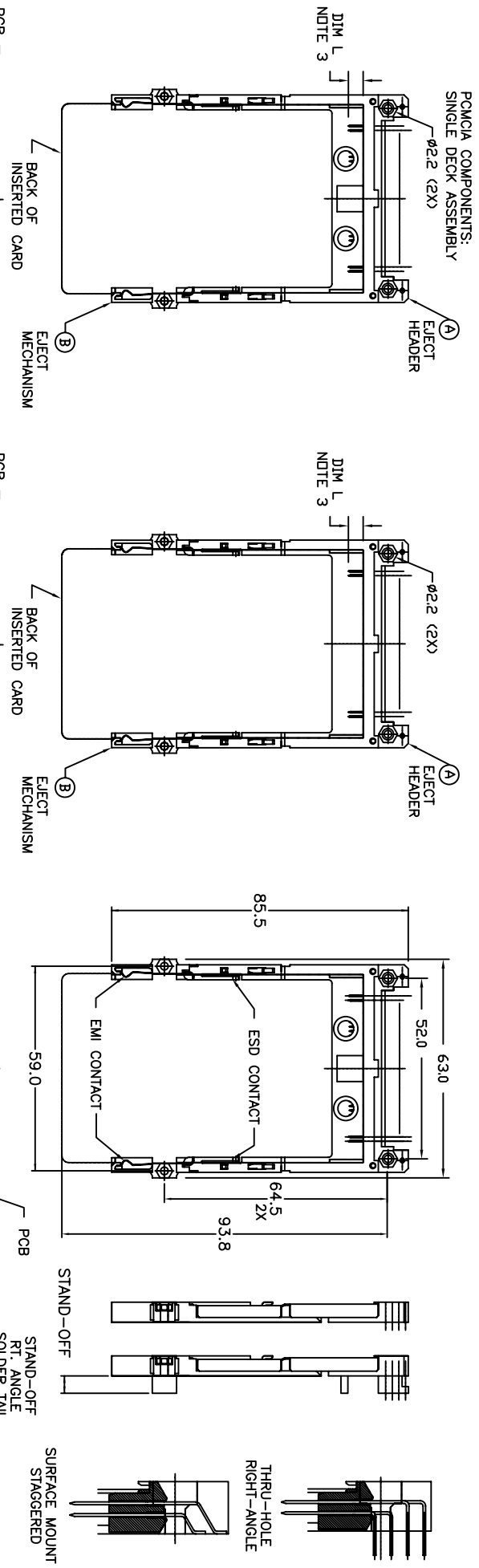
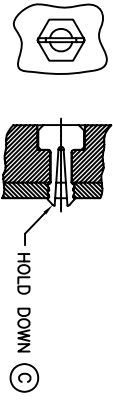


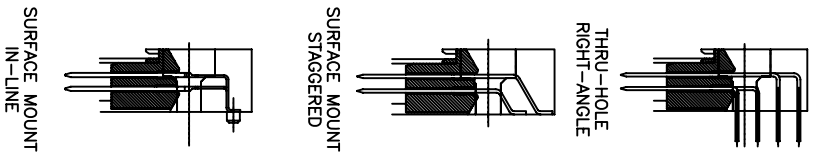
PCMCIA COMPONENTS:
SINGLE DECK ASSEMBLY



- NOTES:
- REFER TO HEADER DRAWING 94898 AND NON-EJECT MECHANISM 92791 FOR ADDITIONAL DIMENSIONS, MATERIAL, AND PLATING INFORMATION.
 - REFER TO TA-946 FOR PCB LAYOUT AND PCB KEEP-OUT AREA.
 - RECOMMENDED SCREW TORQUE: 1.0 TO 1.5 MAX. in-lbs. (1.2-1.7 cm-kg).
 - PCB SIDE IS AS APPEARS INSTALLED.
 - SOLDER TAIL KEY:
 - R/A = RIGHT ANGLE PIN-THROUGH-HOLE SMT-STG = STAGGERED SURFACE MOUNT SMT-IL = SURFACE MOUNT IN-LINE (SINGLE ROW) DIM L
 - 4.25±0.1 3.5±0.1 5.0±0.1
OTHERS 36.67 1.17,34,35,51,68
 - ADD "H" TO PART NUMBER FOR OPTIONAL HOLD DOWN (4 PER ASSEMBLY)



- ADD "L" TO PART NUMBER FOR LEAD-FREE TYPE.
- IF LEAD FREE P/N, THE HOUSING WILL WITHSTAND EXPOSURE TO 260°C PEAK TEMPERATURE SOLDER TAIL: SMT-IL, SMT-STG CAN RESIST 40 SECONDS IN A CONNECTION, INFRARED OR VAPOR PHASE REFLOW OVEN.
- SOLDER TAIL: R/A CAN RESIST TO SECONDS IN A WAVE SOLDER APPLICATION WITH A 1.00MM MINIMUM THICK CIRCUIT BOARD.
- IF LEAD FREE P/N, THE PRODUCT MEETS EUROPEAN UNION DIRECTIVES AND OTHER COUNTRY REGULATIONS AS DISCRIBED IN GS-22-008
- LEAD FREE P/N PACKAGING MEETS GS-14-920 SPECIFICATION
- PRODUCT SPEC:110-263

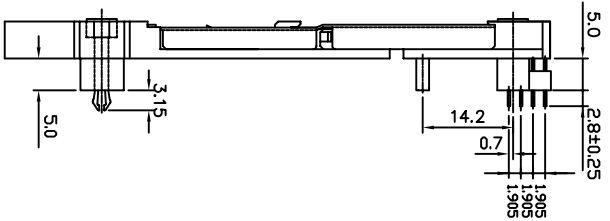
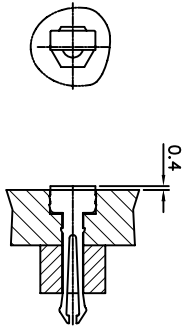
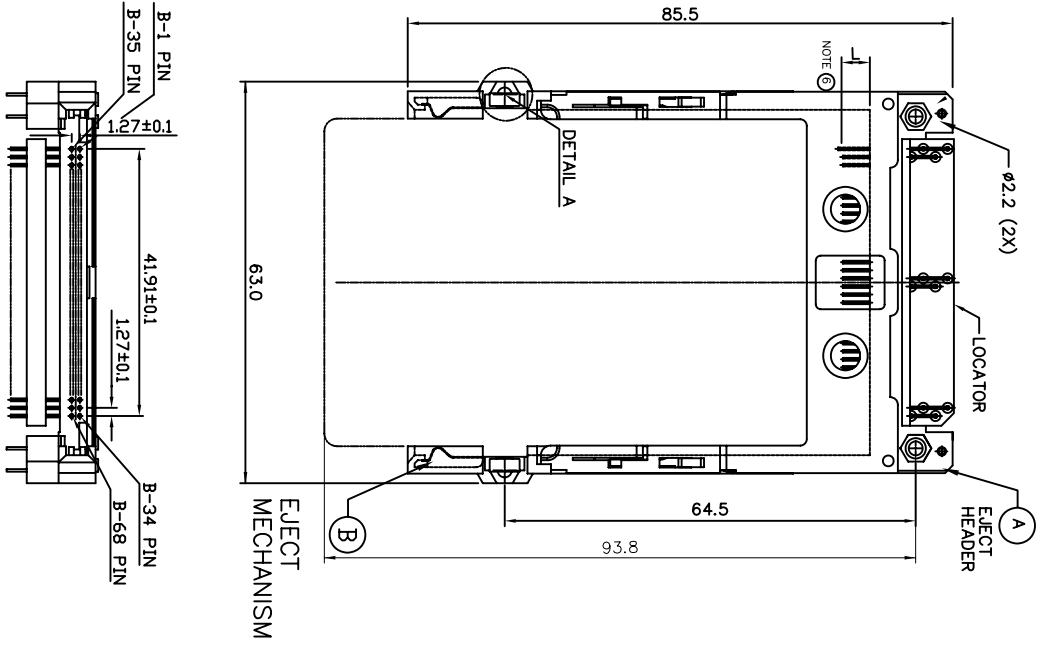


mat'l. code	surface	tolerance	projection	product family	PCMCIA	
Ltr	ecn no	dr	date	ISO 1302	ISO 406	ISO 100
dr	date	tolerances unless otherwise specified	projection			
ecr-h-rz98	HU	03/20/14	angle	XXX.3		
			linear	.XXX.13		
			±2	.XXX±.051		
			scale	1:1		
	dr	R.GRAPE	5/22/98			
	hngt	D.BRANN	5/22/98			
T	N08-0219	MZ	11/18/08	chr	D.BRANN	5/22/98
U	ecr-h-rz92	HU	09/18/13	hnpd	D.BRANN	5/22/98
sheet	revision	V	V	V	V	V
index	sheet	1	2	3	4	

PCB SIDE (A)	SOLDER TAIL (B)	STANDOFF (MM)	(A) EJECT HEADER	(B) EJECT MECHANISM	NOTE (C) HOLD DOWN	QTY.	TO MAKE FINAL ASSY PART NUMBER	MOUNTING STYLE TO P.C.B.
ABOVE	R/A	NONE	94898-000	92791-001			84648-000	
ABOVE	R/A	NONE	94898-000	92791-001	93925-001	4	84648-000H	
ABOVE	R/A	2	94898-040	92791-021			84648-020	
ABOVE	R/A	2	94898-040	92791-021	93925-002	4	84648-020H	
ABOVE	R/A	4	94898-010LF	92791-041			84648-040	
ABOVE	R/A	4	94898-010LF	92791-041			-040LF	
ABOVE	R/A	4	94898-010	92791-041	93925-003	4	84648-040H	
ABOVE	R/A	4	94898-010LF	92791-041	-003	4	-040H/LF	
ABOVE	R/A	5	94898-020	92791-051			84648-050	
ABOVE	R/A	5	94898-020	92791-051	93925-004	4	84648-050H	
ABOVE	R/A	5	94898-021MLF	92791-051M			84648-050H/LF	
ABOVE	R/A	5	94898-021MLF	92791-051M	63284-104	2	84648-051LF	
ABOVE	R/A	5	94898-021MLF	92791-053M	63284-104	4	84648-056H/LF	
ABOVE	R/A	5	SEE TABLE	SEE TABLE	SEE TABLE	4	84648-057H/LF	
ABOVE	R/A	5	94898-002LF	92791-001	63284-011	4	84648-002LF	
ABOVE	SMT-IL	NONE	94898-002LF	92791-001			84648-002LF	
ABOVE	SMT-IL	NONE	94898-002LF	92791-001			84648-003LF	
ABOVE	SMT-IL	NONE	94898-002LF	92791-001A			84648-003H/LF	
ABOVE	R/A	NONE	94898-000LF	92791-001	93925-001	4	84648-000LF	
ABOVE	R/A	2	94898-040LF	92791-021			84648-020LF	
ABOVE	R/A	2	94898-040LF	92791-021	93925-002	4	84648-020H/LF	
ABOVE	R/A	5	94898-020LF	92791-051			84648-050LF	
ABOVE	SMT-IL	NONE	94898-002	92791-001	93925-001	4	84648-002H	
ABOVE	SMT-STG	NONE	94898-001	92791-001			84648-001	
ABOVE	SMT-IL	NONE	94898-002LF	92791-001	-001	4	84648-002H/LF	
ABOVE	SMT-STG	NONE	94898-001LF	92791-001			84648-001LF	
BELOW	R/A	NONE	94898-500	92791-001			84648-500	
BELOW	R/A	2	94898-540	92791-021			84648-520	
BELOW	R/A	4	94898-510	92791-041			84648-540	
BELOW	R/A	5	94898-520	92791-051			84648-550	
BELOW	R/A	5	94898-520	92791-051	93925-004	4	84648-550H	
BELOW	R/A	NONE	94898-500LF	92791-001			84648-500LF	
BELOW	R/A	2	94898-540LF	92791-021			84648-520LF	
BELOW	R/A	4	94898-510LF	92791-041			84648-540LF	
BELOW	R/A	5	94898-520LF	92791-051			84648-550LF	
BELOW	R/A	5	94898-520LF	92791-051	93925-004	4	84648-550H/LF	
BELOW	SMT-IL	NONE	94898-502	92791-001			84648-502	
BELOW	SMT-IL	NONE	94898-502	92791-001	93925-001	4	84648-502H	
BELOW	SMT-STG	NONE	94898-501	92791-001			84648-501	
BELOW	SMT-IL	NONE	94898-502LF	92791-001			84648-502H/LF	
BELOW	SMT-IL	NONE	94898-502LF	92791-001	93925-001	4	84648-502H/LF	
BELOW	SMT-STG	NONE	94898-501LF	92791-001			84648-501LF	

mat'l. code	surface	tolerance	projection	product family
Ltr	ISO 1302	ISO 406	ISO 100	PCMCIA
ecr no	tolerances unless otherwise specified			
dr	angles			
date	linear			
	±2°			
	.XXX±.13			
	.XXX±.051			
	scale 1:1			
dr	R.GRAPE	6/22/98		
engr	D.BRANN	6/22/98		
chr	D.BRANN	6/22/98		
ppnd	D.BRANN	6/22/98		
Sheet index	revision			
	sheet			
title 68 POS. 3.VNON-EJECT HEADER ASSEMBLY				
dwg no 84648				
sheet 2 of 4 size A4				
type CUSTOMER Drawing				

PRODUCT NO.
84648-055/055L/F



DETAIL A

mat'l. code	surface	tolerance	projection	product family	PCMCIA
ltr ecn no	ISO 1302	ISO 406	ISO 107	title	68 POS. 3.3VNON-EJECT HEADER ASSEMBLY
dr	date	tolerances unless otherwise specified	scale	dwg no	84648
angle	linear	.XXX±.13	MM	sheet	3 of 4 size
±2°	.XXX±.051	scale 1:1		type	CUSTOMER Drawing
dr	R.GRAPE	6/22/98			
engr	D.BRANN	6/22/98			
chr	D.BRANN	6/22/98			
ppnd	D.BRANN	6/22/98			
Sheet index	revision				
	sheet				

form A3

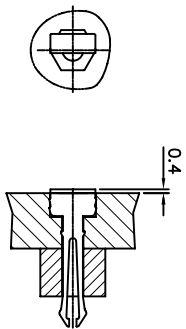
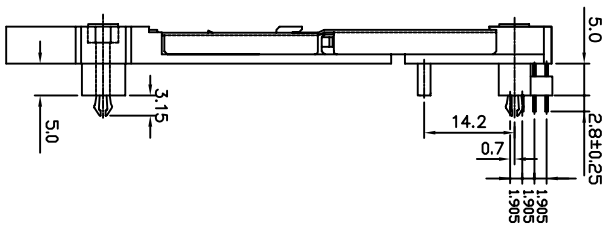
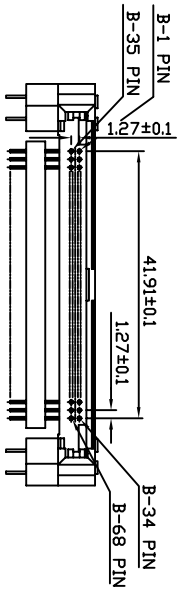
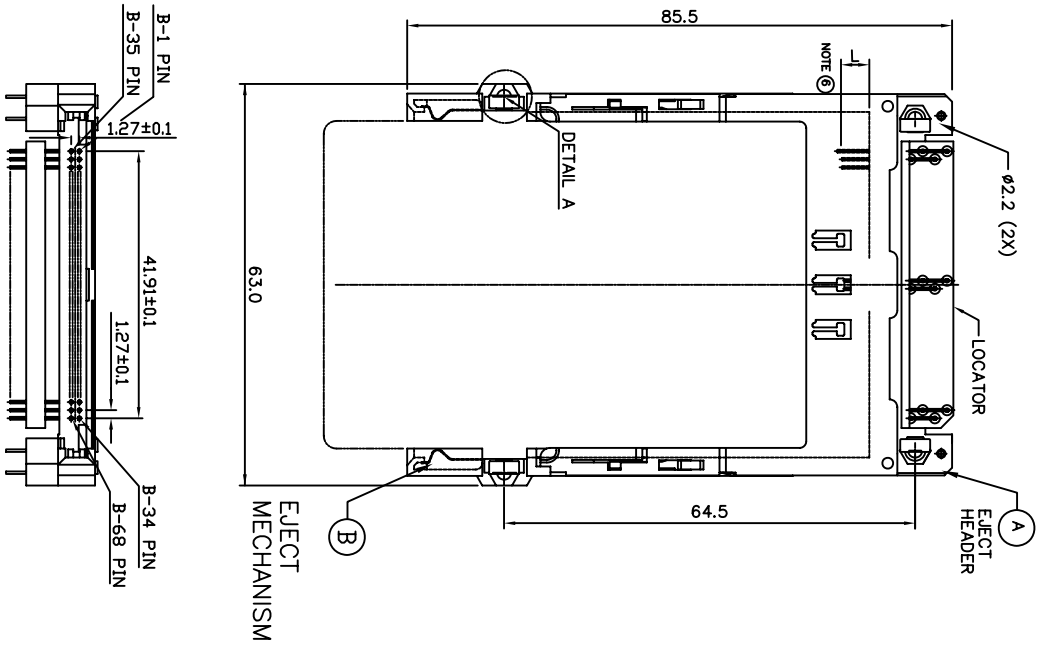
PDS: Rev: V

STATUS: Released

Printed: Apr 01, 2014



PRODUCT NO.
84648-056HLF



DETAIL A

mat'l. code	surface	tolerance	projection	product family	PCMCIA
Ltr	ISO 1302	ISO 406	ISO 107	title	68 POS. 3.3VNON-EJECT
ecn no	ISO 1302	ISO 406	ISO 107	HEADER ASSEMBLY	
dr	tolerances unless otherwise specified	XXX±.051	MM	dwg no	84648
date	angles	linear	scale 1:1	sheet	4 of 4 size
	±2	.XXX±.13		type	CUSTOMER
	dr	R.GRAPE	6/22/98	Drawing	A4
	engr	D.BRANN	6/22/98		
	chr	D.BRANN	6/22/98		
	ppnd	D.BRANN	6/22/98		
Sheet	revision				
index	sheet				