

## Surge protection device - TTC-6-3-HF-F-M-EX-24DC-UT-I - 2906823

Please be informed that the data shown in this PDF Document is generated from our Online Catalog. Please find the complete data in the user's documentation. Our General Terms of Use for Downloads are valid (<http://phoenixcontact.com/download>)




Surge protection with integrated status indicator and knife disconnection for a 3-wire Ex i signal circuit with common reference potential. For HF applications. Indirect grounding via gas-filled surge arrester.

### Why buy this product

- ✓ Space-saving installation due to the narrow overall width of 6.2 mm
- ✓ Signaling without additional auxiliary power, thanks to the mechanical status indicator
- ✓ Optional remote signaling module monitors up to 40 items, without additional wiring
- ✓ Signal circuits easily interrupted for maintenance work, thanks to vertical knife disconnection
- ✓ Safe behavior in the event of overload, thanks to the integrated disconnect device
- ✓ Grounded or insulated shield grounding, thanks to the third terminal point on the surge protective device



### Key Commercial Data

Packing unit	1
GTIN	 4 055626 135854
GTIN	4055626135854
Custom tariff number	85363010

### Technical data

#### Dimensions

Height	105.8 mm
	105.8 mm
Width	6.2 mm
Depth	83.5 mm

# Surge protection device - TTC-6-3-HF-F-M-EX-24DC-UT-I - 2906823

## Technical data

### Ambient conditions

Ambient temperature (operation)	-40 °C ... 85 °C
Ambient temperature (storage/transport)	-40 °C ... 85 °C
Degree of protection	IP20

### General

Housing material	PBT
Flammability rating according to UL 94	V-0
Color	sky blue RAL 5015
Mounting type	DIN rail: 35 mm
Design	Rail-mountable module, one-piece
Direction of action	Line-Line & Line-Signal Ground/Shield & optional Signal Ground/Shield-Earth Ground

### Protective circuit

IEC test classification	C1
	C2
	C3
	D1
Nominal voltage $U_N$	24 V DC
Maximum continuous voltage $U_C$	30 V DC
Rated current	600 mA (40 °C)
Operating effective current $I_C$ at $U_C$	$\leq 5 \mu A$
Residual current $I_{PE}$	$\leq 1 \mu A$
Nominal discharge current $I_n$ (8/20) $\mu s$ (Core-Core)	5 kA
Nominal discharge current $I_n$ (8/20) $\mu s$ (core-earth)	5 kA
Nominal discharge current $I_n$ (8/20) $\mu s$ (core-GND)	5 kA
Pulse discharge current $I_{imp}$ (10/350) $\mu s$ (core-core)	0.5 kA
Pulse discharge current $I_{imp}$ (10/350) $\mu s$ (core-ground)	0.5 kA
Pulse discharge current $I_{imp}$ (10/350) $\mu s$ (core-GND)	0.5 kA
Total discharge current $I_{total}$ (8/20) $\mu s$	10 kA
Voltage protection level $U_p$ (core-core)	$\leq 150 V$ (C1 - 1 kV/500 A)
	$\leq 275 V$ (C2 - 10 kV / 5 kA)
	$\leq 55 V$ (C3 - 100 A)
Voltage protection level $U_p$ (core-ground)	$\leq 750 V$ (C1 - 1 kV/500 A)
	$\leq 750 V$ (C2 - 10 kV / 5 kA)
	$\leq 1.2 kV$ (C3 - 100 A)
Voltage protection level $U_p$ (core-GND)	$\leq 80 V$ (C1 - 1 kV/500 A)
	$\leq 125 V$ (C2 - 10 kV / 5 kA)

## Surge protection device - TTC-6-3-HF-F-M-EX-24DC-UT-I - 2906823

### Technical data

#### Protective circuit

	≤ 55 V (C3 - 100 A)
Voltage protection level $U_p$ , static (core-core)	≤ 75 V (C1 - 1 kV/500 A)
	≤ 120 V (C2 - 10 kV / 5 kA)
Voltage protection level $U_p$ , static (core-ground)	≤ 750 V (C1 - 1 kV/500 A)
	≤ 750 V (C2 - 10 kV / 5 kA)
Voltage protection level $U_p$ , static (core-GND)	≤ 75 V (C1 - 1 kV/500 A)
	≤ 120 V (C2 - 10 kV / 5 kA)
Response time $t_A$ (core-core)	≤ 1 ns
Response time $t_A$ (core-earth)	≤ 1 ns
	≤ 100 ns
Input attenuation $a_E$ , sym.	typ. 0.3 dB (≤ 8.7 MHz / 150 Ω)
Input attenuation $a_E$ , asym.	typ. 0.3 dB (≤ 10.5 MHz / 150 Ω)
Cut-off frequency $f_g$ (3 dB), sym. in 150 Ohm system	typ. 60 MHz
Cut-off frequency $f_g$ (3 dB), asym. (GND) in 150 Ohm system	typ. 60 MHz
Capacity (core-core)	typ. 32 pF
Capacity (Core-GND)	typ. 32 pF
Resistance in series	1.65 Ω ±20 %
Surge protection fault message	optical
Max. required back-up fuse	630 mA (FF)
Impulse durability (conductor-conductor)	C1 - 1 kV/500 A
	C2 - 10 kV/5 kA
	C3 - 100 A
Impulse durability (conductor-ground)	C1 - 1 kV/500 A
	C2 - 10 kV/5 kA
	C3 - 100 A
	D1 - 500 A
Impulse durability (conductor-GND)	C1 - 1 kV/500 A
	C2 - 10 kV/5 kA
	C3 - 100 A
	D1 - 500 A
Pulse reset time (conductor-conductor)	≤ 600 ms
Pulse reset time (conductor-ground)	≤ 30 ms
Pulse reset time (conductor-GND)	≤ 600 ms

#### Connection data

Connection method	Screw connection
Connection method IN	Screw terminal blocks
Connection method OUT	Screw terminal blocks

# Surge protection device - TTC-6-3-HF-F-M-EX-24DC-UT-I - 2906823

## Technical data

### Connection data

Screw thread	M3
Tightening torque	0.5 Nm ... 0.6 Nm
Stripping length	8 mm
Conductor cross section flexible	0.2 mm <sup>2</sup> ... 2.5 mm <sup>2</sup>
Conductor cross section solid	0.2 mm <sup>2</sup> ... 4 mm <sup>2</sup>
Conductor cross section AWG	24 ... 12

### Standards and Regulations

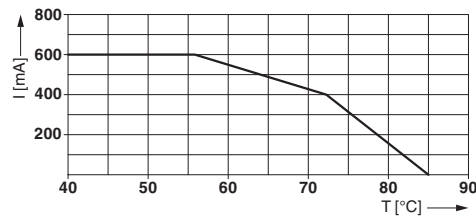
Standards/specifications	EN 60079-0 2012 + A11:2013
	EN 60079-11 2012
	EN 61643-21 2001 + A1:2009 + A2:2013
	IEC 60079-0 2011 (modified) + corrigendum 2012 + corrigendum 2013
	IEC 60079-11 2008
	IEC 61643-21 2000 + corrigendum 2001 + A1:2008, modified + A2:2012

## Drawings

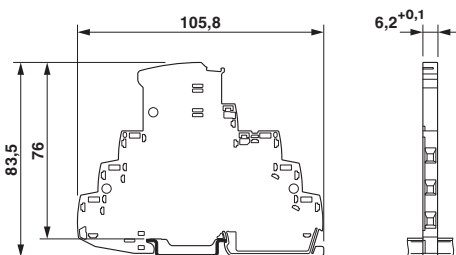
Pictogram



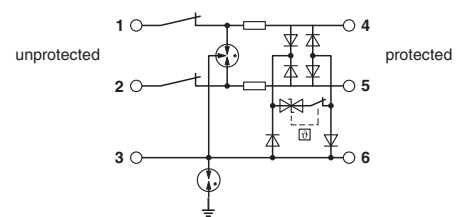
Diagram



Dimensional drawing



Circuit diagram



## Approvals

### Approvals

## Surge protection device - TTC-6-3-HF-F-M-EX-24DC-UT-I - 2906823

### Approvals

Approvals

UL Listed


---

Ex Approvals

IECEX / ATEX

---

### Approval details

UL Listed		<a href="http://database.ul.com/cgi-bin/XYV/template/LISEXT/1FRAME/index.htm">http://database.ul.com/cgi-bin/XYV/template/LISEXT/1FRAME/index.htm</a>	FILE E 138168
-----------	---	---	---------------

---

Phoenix Contact 2017 © - all rights reserved  
<http://www.phoenixcontact.com>