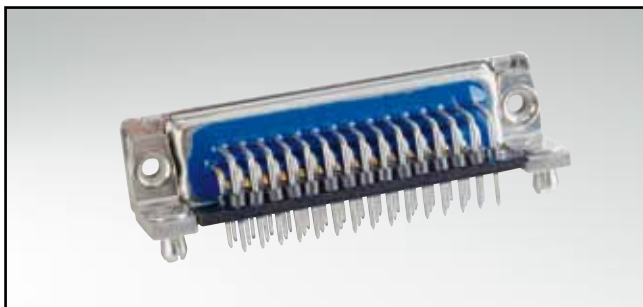


# LC-FILTER D-SUB HIGH DENSITY

Solder pin – Angled – .350" / 7.98 mm – Precision machined contacts – Metal bracket

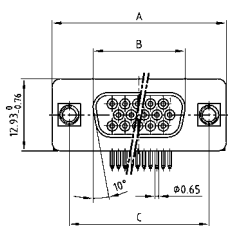


RoHS compliant – CSA listed, File No.: LR 115000-1 – UL listed, File No.: E202784

## DESCRIPTION

- Mounting styles:
  - with mounting bracket and 4-40 UNC or M3 threaded insert
  - with mounting bracket, PCB clip and 4-40 UNC or M3 threaded insert
- 44 and 62 pos. version implemented with ferrite pearls
- Quality class 3 (also available in quality class 1)
- Shell: Steel tin plated (brass tin plated on request)

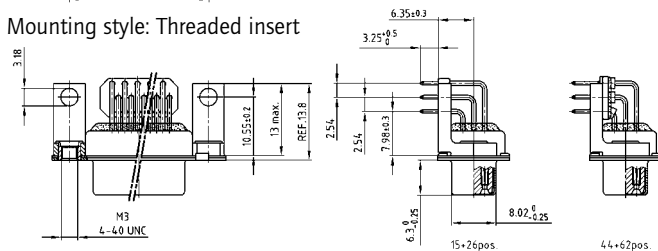
## SOCKET CONNECTOR



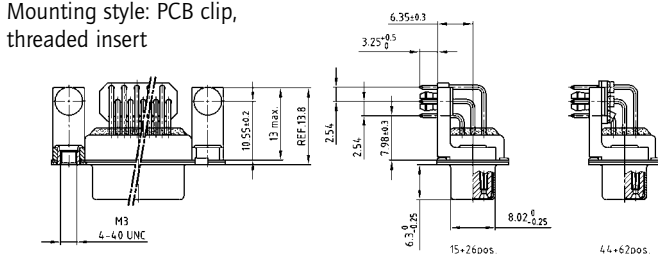
No. of pos.	A-0.76	B-0.25	C
15	31.19	16.46	25.00 <sup>+0.12</sup> / <sub>-0.13</sub>
26	39.52	24.79	33.30 <sup>+0.15</sup> / <sub>-0.10</sub>
44	53.42	38.50	47.04 <sup>+0.13</sup> / <sub>-0.10</sub>
62	69.70	54.96	63.50 <sup>+0.13</sup> / <sub>-0.10</sub>

PCB layout: Kat1iU1A

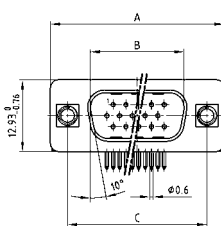
Mounting style: Threaded insert



Mounting style: PCB clip, threaded insert



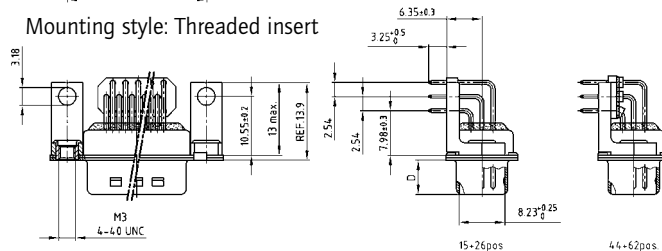
## PLUG CONNECTOR



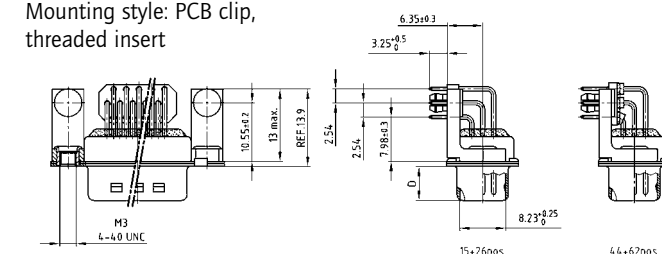
No. of pos.	A-0.76	B-0.25	C	D-0.3
15	31.19	16.79	25.00 <sup>+0.12</sup> / <sub>-0.13</sub>	6.12
26	39.52	25.12	33.30 <sup>+0.15</sup> / <sub>-0.10</sub>	6.12
44	53.42	38.84	47.04 <sup>+0.13</sup> / <sub>-0.10</sub>	5.99
62	69.70	55.30	63.50 <sup>+0.13</sup> / <sub>-0.10</sub>	5.99

PCB layout: Kat1iU2A

Mounting style: Threaded insert



Mounting style: PCB clip, threaded insert



## ORDER DATA

### Capacitance 180 pF

#### SOCKET CONNECTOR

No. of pos.	Mounting style	Part Number
15	4-40 UNC Threaded insert	242 A 26580 X
26	4-40 UNC Threaded insert	242 A 26590 X
44	4-40 UNC Threaded insert	242 A 26600 X
62	4-40 UNC Threaded insert	242 A 26610 X
15	M3 Threaded insert	242 A 26660 X
26	M3 Threaded insert	242 A 26670 X
44	M3 Threaded insert	242 A 26680 X
62	M3 Threaded insert	242 A 26690 X
15	PCB clip / 4-40 UNC Threaded insert	242 A 26620 X
26	PCB clip / 4-40 UNC Threaded insert	242 A 26630 X
44	PCB clip / 4-40 UNC Threaded insert	242 A 26640 X
62	PCB clip / 4-40 UNC Threaded insert	242 A 26650 X
15	PCB clip / M3 Threaded insert	242 A 26700 X
26	PCB clip / M3 Threaded insert	242 A 26710 X
44	PCB clip / M3 Threaded insert	242 A 26720 X
62	PCB clip / M3 Threaded insert	242 A 26730 X

#### PLUG CONNECTOR

No. of pos.	Mounting style	Part Number
15	4-40 UNC Threaded insert	241 A 26680 X
26	4-40 UNC Threaded insert	241 A 26690 X
44	4-40 UNC Threaded insert	241 A 26700 X
62	4-40 UNC Threaded insert	241 A 26710 X
15	M3 Threaded insert	241 A 26760 X
26	M3 Threaded insert	241 A 26770 X
44	M3 Threaded insert	241 A 26780 X
62	M3 Threaded insert	241 A 26790 X
15	PCB clip / 4-40 UNC Threaded insert	241 A 26720 X
26	PCB clip / 4-40 UNC Threaded insert	241 A 26730 X
44	PCB clip / 4-40 UNC Threaded insert	241 A 26740 X
62	PCB clip / 4-40 UNC Threaded insert	241 A 26750 X
15	PCB clip / M3 Threaded insert	241 A 26800 X
26	PCB clip / M3 Threaded insert	241 A 26810 X
44	PCB clip / M3 Threaded insert	241 A 26820 X
62	PCB clip / M3 Threaded insert	241 A 26830 X

PCB clip .122"/3.1 ± .004"/0.10 mm hole diameter and .063"/1.6 mm circuit board thickness

# LC-FILTER D-SUB HIGH DENSITY

Solder pin – Angled – .350" / 7.98 mm – Precision machined contacts – Metal bracket

**ORDER DATA**

**Capacitance 370 pF**

SOCKET CONNECTOR			PLUG CONNECTOR		
No. of pos.	Mounting style	Part Number	No. of pos.	Mounting style	Part Number
15	4-40 UNC Threaded insert	242 A 25620 X	15	4-40 UNC Threaded insert	241 A 25720 X
26	4-40 UNC Threaded insert	242 A 25630 X	26	4-40 UNC Threaded insert	241 A 25730 X
44	4-40 UNC Threaded insert	242 A 25640 X	44	4-40 UNC Threaded insert	241 A 25740 X
62	4-40 UNC Threaded insert	242 A 25650 X	62	4-40 UNC Threaded insert	241 A 25750 X
15	M3 Threaded insert	242 A 25700 X	15	M3 Threaded insert	241 A 25800 X
26	M3 Threaded insert	242 A 25710 X	26	M3 Threaded insert	241 A 25810 X
44	M3 Threaded insert	242 A 25720 X	44	M3 Threaded insert	241 A 25820 X
62	M3 Threaded insert	242 A 25730 X	62	M3 Threaded insert	241 A 25830 X
15	PCB clip / 4-40 UNC Threaded insert	242 A 25780 X	15	PCB clip / 4-40 UNC Threaded insert	241 A 25880 X
26	PCB clip / 4-40 UNC Threaded insert	242 A 25790 X	26	PCB clip / 4-40 UNC Threaded insert	241 A 25890 X
44	PCB clip / 4-40 UNC Threaded insert	242 A 25800 X	44	PCB clip / 4-40 UNC Threaded insert	241 A 25900 X
62	PCB clip / 4-40 UNC Threaded insert	242 A 25810 X	62	PCB clip / 4-40 UNC Threaded insert	241 A 25910 X
15	PCB clip / M3 Threaded insert	242 A 25860 X	15	PCB clip / M3 Threaded insert	241 A 25960 X
26	PCB clip / M3 Threaded insert	242 A 25870 X	26	PCB clip / M3 Threaded insert	241 A 25970 X
44	PCB clip / M3 Threaded insert	242 A 25880 X	44	PCB clip / M3 Threaded insert	241 A 25980 X
62	PCB clip / M3 Threaded insert	242 A 25890 X	62	PCB clip / M3 Threaded insert	241 A 25990 X

**Capacitance 830 pF**

SOCKET CONNECTOR			PLUG CONNECTOR		
No. of pos.	Mounting style	Part Number	No. of pos.	Mounting style	Part Number
15	4-40 UNC Threaded insert	242 A 25660 X	15	4-40 UNC Threaded insert	241 A 25760 X
26	4-40 UNC Threaded insert	242 A 25670 X	26	4-40 UNC Threaded insert	241 A 25770 X
44	4-40 UNC Threaded insert	242 A 25680 X	44	4-40 UNC Threaded insert	241 A 25780 X
62	4-40 UNC Threaded insert	242 A 25690 X	62	4-40 UNC Threaded insert	241 A 25790 X
15	M3 Threaded insert	242 A 25740 X	15	M3 Threaded insert	241 A 25840 X
26	M3 Threaded insert	242 A 25750 X	26	M3 Threaded insert	241 A 25850 X
44	M3 Threaded insert	242 A 25760 X	44	M3 Threaded insert	241 A 25860 X
62	M3 Threaded insert	242 A 25770 X	62	M3 Threaded insert	241 A 25870 X
15	PCB clip / 4-40 UNC Threaded insert	242 A 25820 X	15	PCB clip / 4-40 UNC Threaded insert	241 A 25920 X
26	PCB clip / 4-40 UNC Threaded insert	242 A 25830 X	26	PCB clip / 4-40 UNC Threaded insert	241 A 25930 X
44	PCB clip / 4-40 UNC Threaded insert	242 A 25840 X	44	PCB clip / 4-40 UNC Threaded insert	241 A 25940 X
62	PCB clip / 4-40 UNC Threaded insert	242 A 25850 X	62	PCB clip / 4-40 UNC Threaded insert	241 A 25950 X
15	PCB clip / M3 Threaded insert	242 A 25900 X	15	PCB clip / M3 Threaded insert	241 A 26000 X
26	PCB clip / M3 Threaded insert	242 A 25910 X	26	PCB clip / M3 Threaded insert	241 A 26010 X
44	PCB clip / M3 Threaded insert	242 A 25920 X	44	PCB clip / M3 Threaded insert	241 A 26020 X
62	PCB clip / M3 Threaded insert	242 A 25930 X	62	PCB clip / M3 Threaded insert	241 A 26030 X

PCB clip .122" / 3.1 ± .004" / 0.10 mm hole diameter and .063" / 1.6 mm circuit board thickness