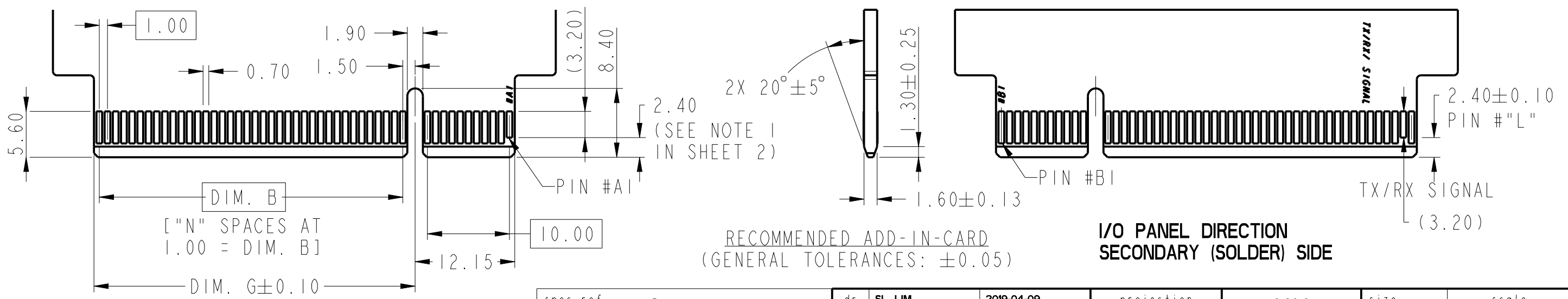


RECOMMENDED PCB LAYOUT - TOP VIEW
(GENERAL TOLERANCES: ±0.05)

CONNECTOR LINK WIDTH	POS	N SPACES	DIM. A	DIM. B	DIM. C	DIM. D	DIM. F	DIM. G	PIN # "L"
X1	36	6	7.65	6.00	9.15	25.00	28.20	8.15	B17
X4	64	20	21.65	20.00	23.15	39.00	42.20	22.15	B31
X8	98	37	38.65	37.00	40.15	56.00	59.20	39.15	B48
X16	164	70	71.65	70.00	73.15	89.00	92.20	72.15	B81

- 1.) NO TIE BAR PERMITTED FROM CARD EDGE TO LEADING EDGE OF PAD FOR PIN #A1 AND PIN # "L".
- 2.) CHAMFER EDGES MUST BE FREE OF CUTTING BURRS.
- 3.) TOLERANCE: ±0.13mm.



I/O PANEL DIRECTION
SECONDARY (SOLDER) SIDE

RECOMMENDED ADD-IN-CARD
(GENERAL TOLERANCES: ±0.05)

I/O PANEL DIRECTION
SECONDARY (SOLDER) SIDE

spec ref	-	dr	SL LIM	2019-04-09	projection	MM	size	A3	scale	2:1
tolerance std	ASME Y14.5	eng	JS LIM	2020-03-12			ecn no		520-0010	
TOLERANCES UNLESS OTHERWISE SPECIFIED		chr	JS LIM	2020-03-12			rel level		Change In Progress	
surface	linear	appr	KP TAY	2020-03-13	product family	-	dwg no		10151422	
ASME Y14.5	angular	Amphenol FCI		PCI EXPRESS CONN.		rev		A		
	0.X	cat. no.		-		Product - Customer Drw		sheet 2 of 4		
	0.XX									
	0.XXX									
	0°									

© 2016 AFCI Amphenol FCI

NOTES:

1. MATERIAL:

- 1.1) HOUSING: HIGH TEMPERATURE THERMO PLASTIC, LCP COLOR: BLACK, UL94V-0.
- 1.2) CONTACT: COPPER ALLOY.
- 1.3) HOLD DOWN PLATE: COPPER ALLOY.

2. FINISH:

- 2.1) 10151422-XOXXXXX LF:
CONTACT MATING SIDE: 0.127µm [5µ"] MIN. GOLD (Au) OVER ON CONTACT AREA
OVER 1.27µm [50µ"] MIN. TO 2.54µm [100µ"] MAX. NICKEL (Ni) UNDERPLATED.
- 2.2) 10151422-XIXXXXX LF:
CONTACT MATING SIDE: 0.38µm [15µ"] MIN. GOLD (Au) OVER ON CONTACT AREA
OVER 1.27µm [50µ"] MIN. TO 2.54µm [100µ"] MAX. NICKEL (Ni) UNDERPLATED.
- 2.3) 10151422-X2XXXXX LF:
CONTACT MATING SIDE: 0.76µm [30µ"] MIN. GOLD (Au) OVER ON CONTACT AREA
OVER 1.27µm [50µ"] MIN. TO 2.54µm [100µ"] MAX. NICKEL (Ni) UNDERPLATED.
- 2.4) SOLDER TAIL (ALL):
1.91µm [75µ"] MIN. PURE MATTE TIN (LEAD-FREE) ON SOLDER TAIL OVER
1.27µm [50µ"] MIN. TO 2.54µm [100µ"] MAX. NICKEL (Ni) UNDERPLATED.
- 2.5) HOLD DOWN (SOLDER TAB):
2.54µm [100µ"] MIN. 100% PURE MATTE TIN (Sn) (LEAD-FREE) OVER
1.27µm [50µ"] Min. NICKEL (Ni) UNDERPLATED.

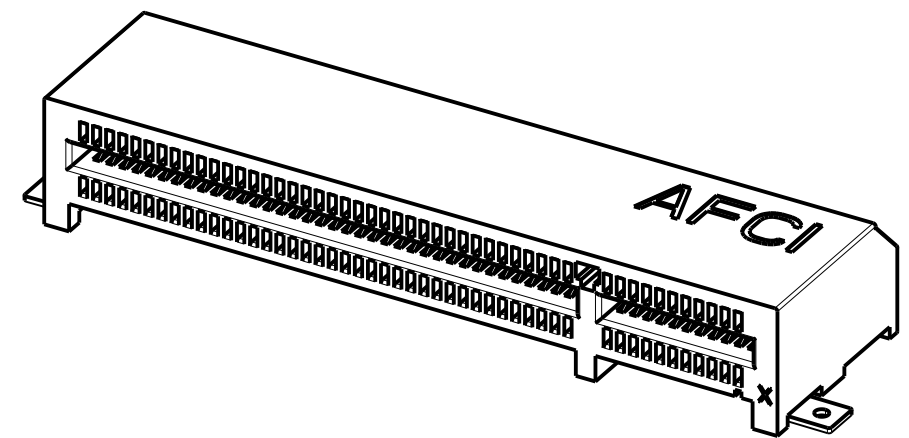
3. PRODUCT SPECIFICATION: GS-12-1406

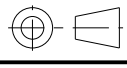

4. PRODUCT MEETS EUROPEAN UNION DIRECTIVES AND OTHER COUNTRY REGULATIONS AS DESCRIBED IN GS-47-0004.

5. DATE CODE BE PRINTED ON THIS SURFACE.
DATE CODE "MMDDYYL", MMDDYY IS ASSEMBLY DATE.
L IS AFCI PRODUCT SITE.
- "M" IS DENOTES: MALAYSIA.

6. THE HOUSING WILL WITHSTAND EXPOSURE TO 260°C PEAK TEMPERATURE FOR 10 SECONDS IN A CONVECTION, INFRA-RED OR VAPOR PHASE REFLOW OVEN.

7. A SYMBOL  WILL BE NEXT TO ANY DIMENSION, VIEW OR NOTE WHICH HAS BEEN MODIFIED WITH THE CURRENT DRAWING REVISION.



spec ref -		dr	SL LIM	2019-04-09	projection	MM	size	A3	scale	2:1	
tolerance std -		eng	JS LIM	2020-03-12			ecn no 520-0010				
ASME Y14.5		chr	JS LIM	2020-03-12			rel level Change In Progress				
TOLERANCES UNLESS OTHERWISE SPECIFIED		appr	KP TAY	2020-03-13	product family -						
surface	linear	Amphenol FCI			PCI EXPRESS CONN. R/A SMT, FOR GEN4		10151422		rev A		
	0.X										±0.30
	0.XX										±0.20
	0.XXX	±0.10	cat. no. -		Product - Customer Drw		sheet 3 of 4				
ASME Y14.5	angular	0°	±1°								

1

2

3

4

A

B

C

D

A

B

C

D

PART NUMBER
 10151422-□ □ □ □ □ □ □ LF

HOUSING
 0: LCP BLACK

0: NIL

CONTACT PLATING
 0: 5μ" Au
 1: 15μ" Au
 2: 30μ" Au

1: TAPE & REEL --- (AVAILABLE FOR 64 & 98 POS.)
 2: HARD TRAY ----- (AVAILABLE FOR 164 POS.)
 3: SOFT TRAY ----- (NOT AVAILABLE)

NO OF POSITION
 0: 64 POS.
 1: 98 POS.
 2: 164 POS.
 3: 36 POS.

1: 5.80mm Z-H†

LOCATOR LENGTH
~~1: DIM. K=4.40mm~~
 2: DIM. K=2.40mm

Amphenol
FCi

© 2016 AFCI

spec ref -		dr	SL LIM	2019-04-09	projection	MM	size	A3	scale	1:1	
tolerance std -		eng	JS LIM	2020-03-12			ecn no 520-0010				
ASME Y14.5		chr	JS LIM	2020-03-12			rel level Change In Progress				
TOLERANCES UNLESS OTHERWISE SPECIFIED		appr	KP TAY	2020-03-13	product family -		rev				
surface	linear	Amphenol FCi		PCI EXPRESS CONN.			dwg no		10151422		A
				R/A SMT, FOR GEN4							
ASME Y14.5	angular			cat. no. -			Product - Customer Drw			sheet 4 of 4	
		0.X	±0.30								
		0.XX	±0.20								
		0.XXX	±0.10								
		0°	±1°								

1

2

3

4