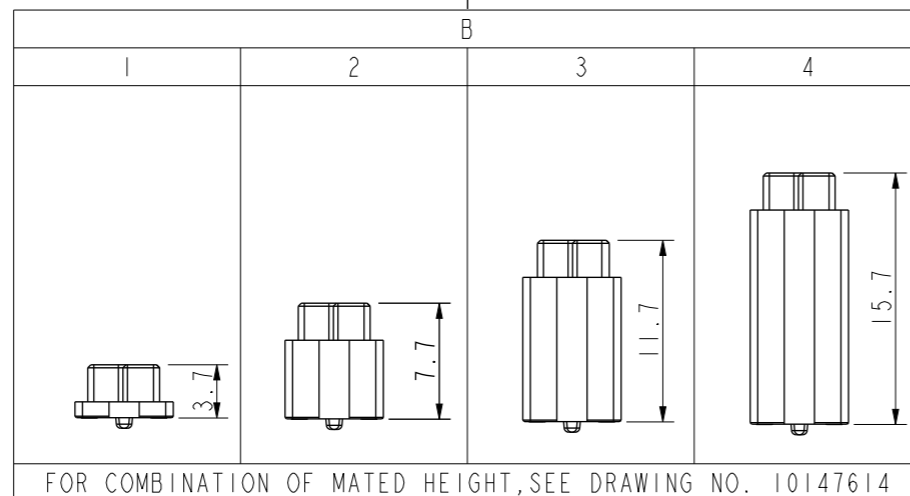


PRODUCT NO.
SEE TABLE

10147613-AA B C D E LF

AA	POSITION
04	2X20
06	2X30
08	2X40
10	2X50
12	2X60
14	2X70

NOTE 5



E	PACKAGING
0	TUBE WITHOUT CAP
6	T&R WITH KAPTON CAP

D	POLARIZATION PEG
0	YES
1	NO

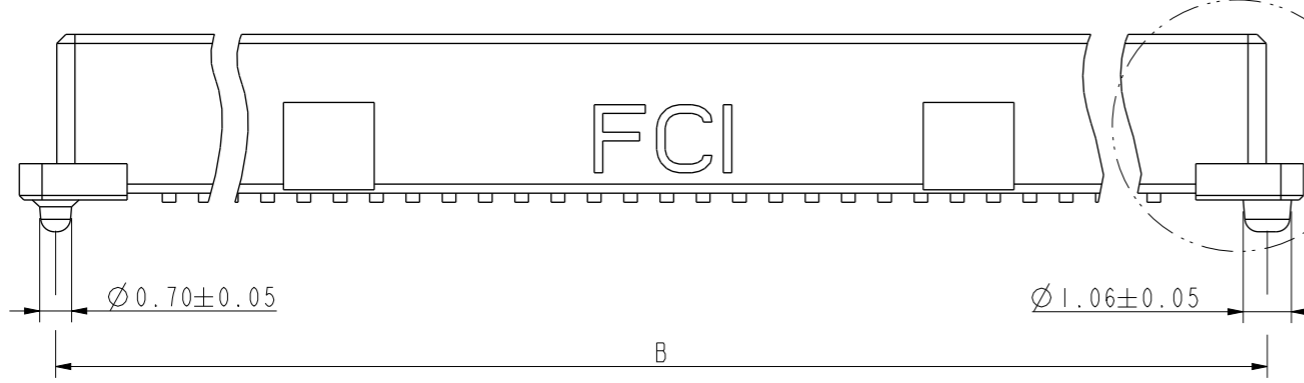
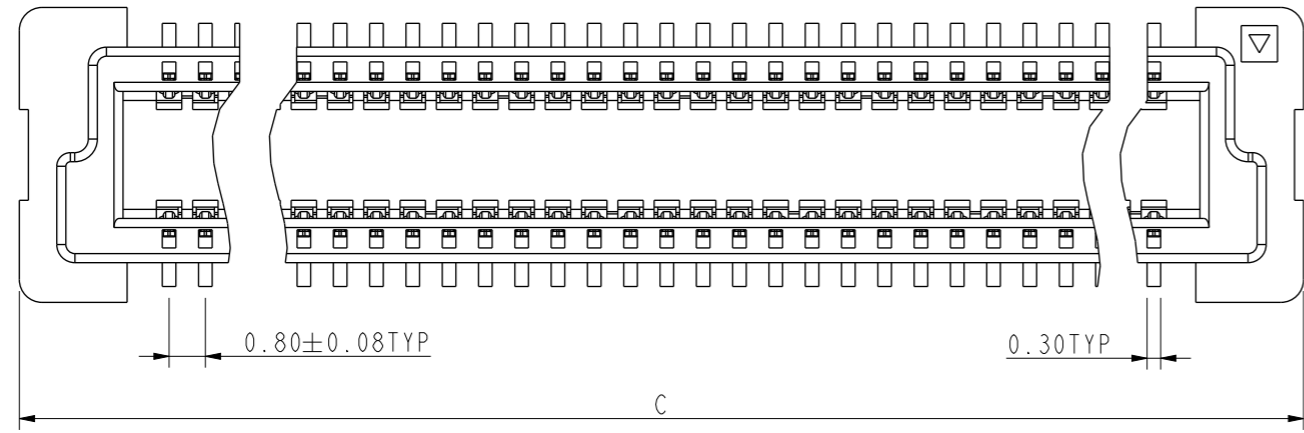
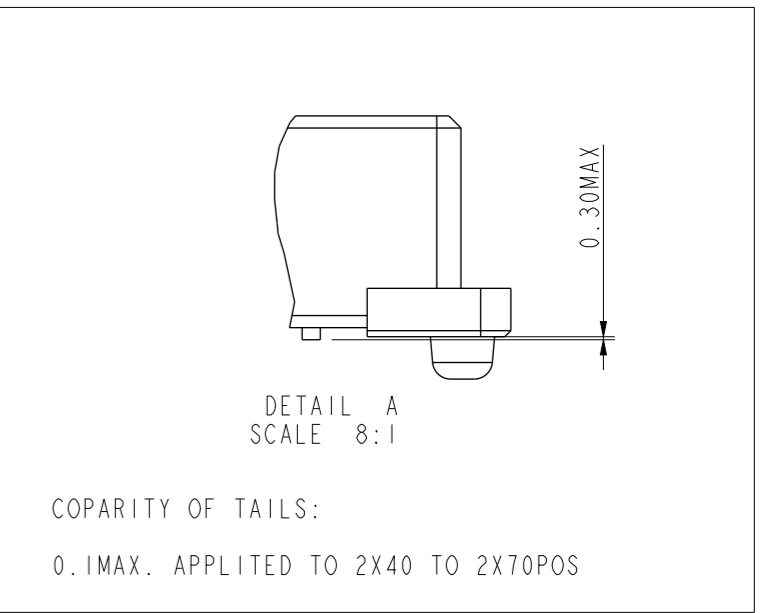
C	PLATING ON CONTACT AREA / ON SOLDER TAIL AREA
4	GOLD 0.2umMIN. ON CONTACT AREA PURE TIN 2.5um MIN(LEAD FREE) ON SOLDER TAIL NICKEL UNDERPLATE OVERALL 1.27um MIN
5	GOLD 0.38umMIN. ON CONTACT AREA PURE TIN 2.5um MIN(LEAD FREE) ON SOLDER TAIL NICKEL UNDERPLATE OVERALL 1.27um MIN
6	GOLD FLASH OVER PALLADIUM-NICKEL 0.69um ON CONTACT AREA PURE TIN 2.5um MIN(LEAD FREE) ON SOLDER TAIL NICKEL UNDERPLATE OVERALL 1.27um MIN

NOTE:

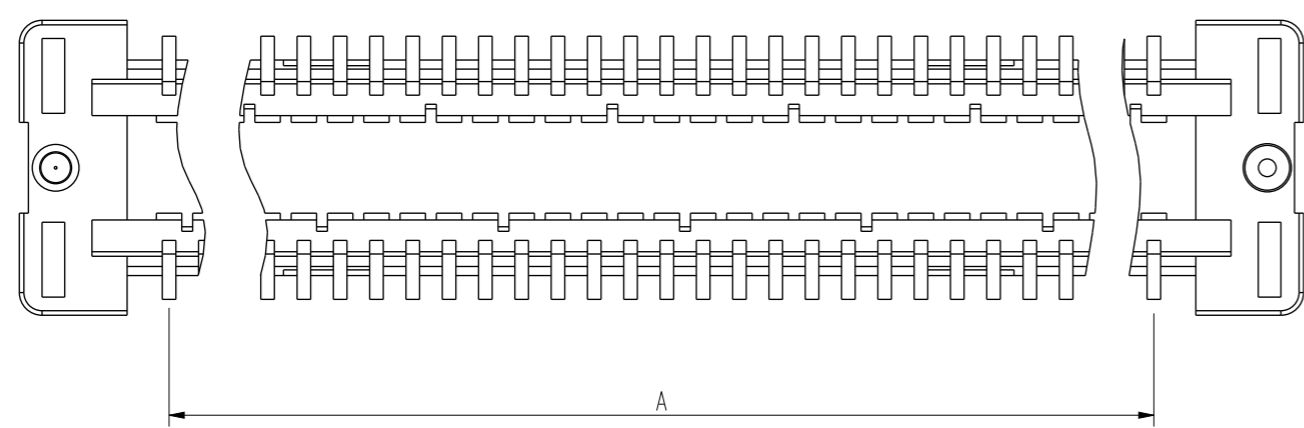
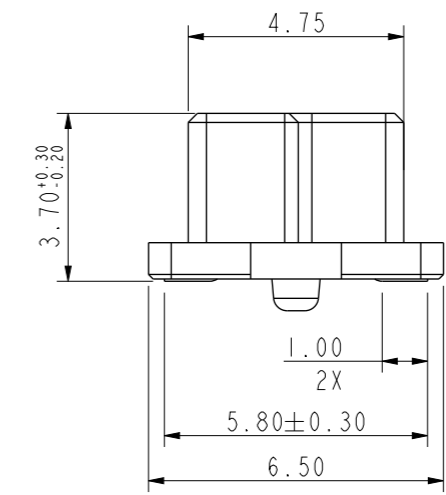
- MATERIAL:
HOUSING: HIGH TEMPERATURE RESIN,NATURAL, UL94-V0
TERMINAL: COPPER ALLOY
- PLATING:
AS SHOWN IN TABLE.
- SEE GS-12-1499 FOR PRODUCT SPEC.
- THE HOUSING WILL WITHSTAND EXPOSURE UP TO 260°C PEAK TEMPERATURE FOR 30 SECONDS IN A CONVECTION, INFRA-RED OR VAPOR PHASE REFLOW OVEN.
- ONLY 120POS PRODUCT IS AVAILABLE.

spec ref	-	dr	Bob Gu	2019/12/31	projection	mm	size	A3	scale	3:1	
tolerance std	ISO 406 ISO 1101	eng	Bob Gu	2020/02/27			ecn no		rel level		
TOLERANCES UNLESS OTHERWISE SPECIFIED		chr	-	-			-		Released		
surface	linear	appr	Tim Yao	2020/02/27	product family		-		cat. no.	-	
	angular	Amphenol FCI		RECEPTACLE ASSEMBLY		dwg no		10147613		rev	A
ISO 1302	0.X ±0.3 0.XX ±0.15 0.XXX ±0.08			BERGSTAK HS 0.8MM				Product - Customer Drw		sheet 1 of 3	

PRODUCT NO.	NO. OF POSITION	DEMENSION		
		A	B	C
10147613-041*0**LF	2X20	15.20	20.20	21.80
10147613-061*0**LF	2X30	23.20	28.20	29.80
10147613-081*0**LF	2X40	31.20	36.20	37.80
10147613-101*0**LF	2X50	39.20	44.20	45.80
10147613-121*0**LF	2X60	47.20	52.20	53.80
10147613-141*0**LF	2X70	55.20	60.20	61.80



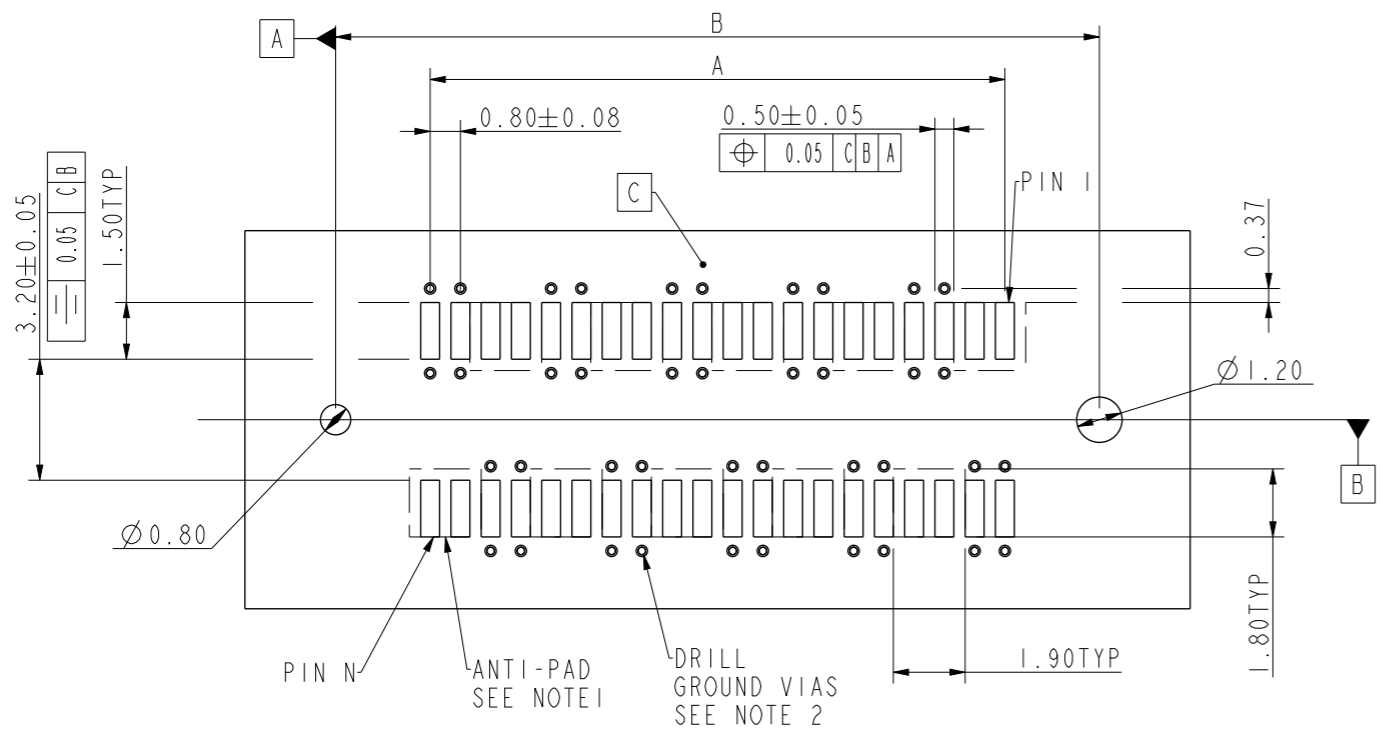
SEE DETAIL A



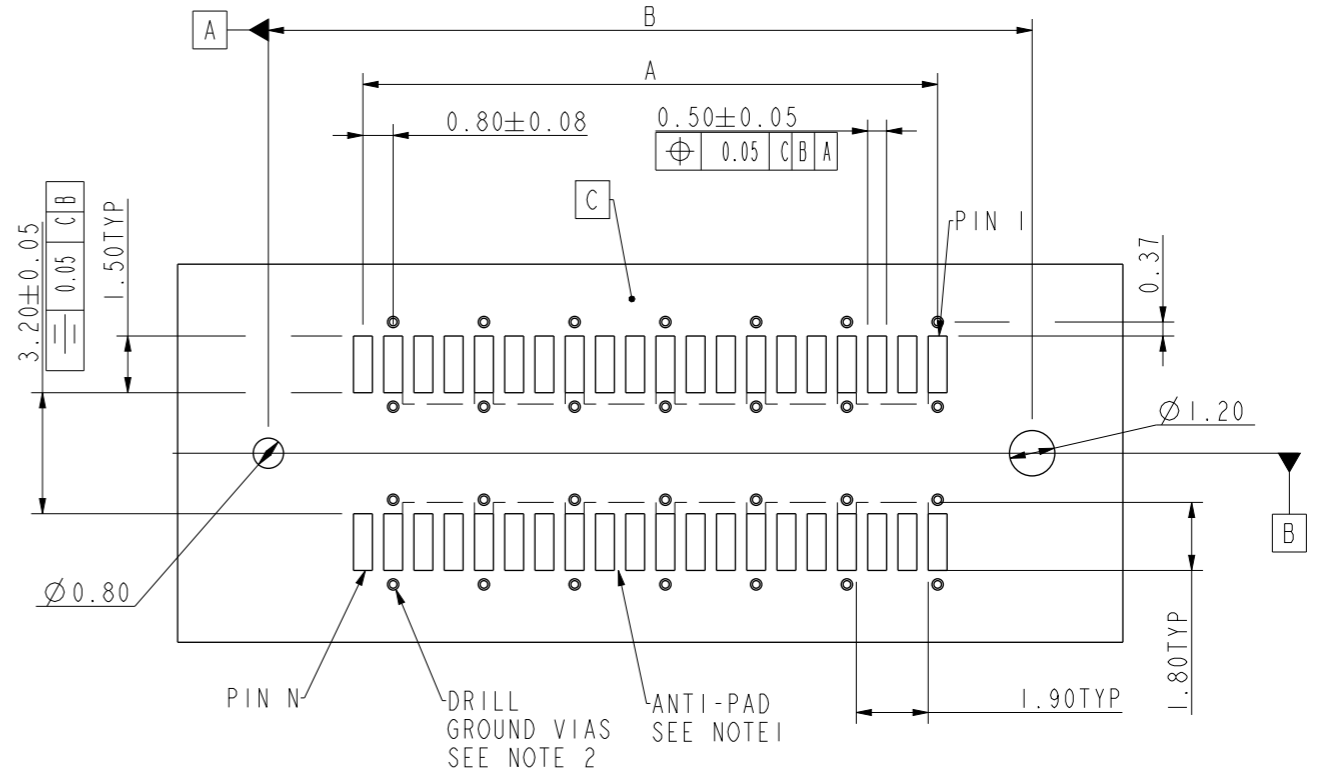
spec ref	-	dr	Bob Gu	2019/12/31	projection	mm	size	A3	scale	2:1
tolerance std	ISO 406 ISO 1101	eng	Bob Gu	2020/02/27			ecn no	-	rel level	Released
TOLERANCES UNLESS OTHERWISE SPECIFIED		chr	-	-			product family			
surface	linear	0.X	±0.3	Amphenol FCI	RECEPTACLE ASSEMBLY		dwg no	10147613	rev	A
		0.XX	±0.15		BERGSTAK HS 0.8MM					
	angular	0°	±2°		cat. no.	Product - Customer Drw	sheet 2 of 3			

Amphenol FCI

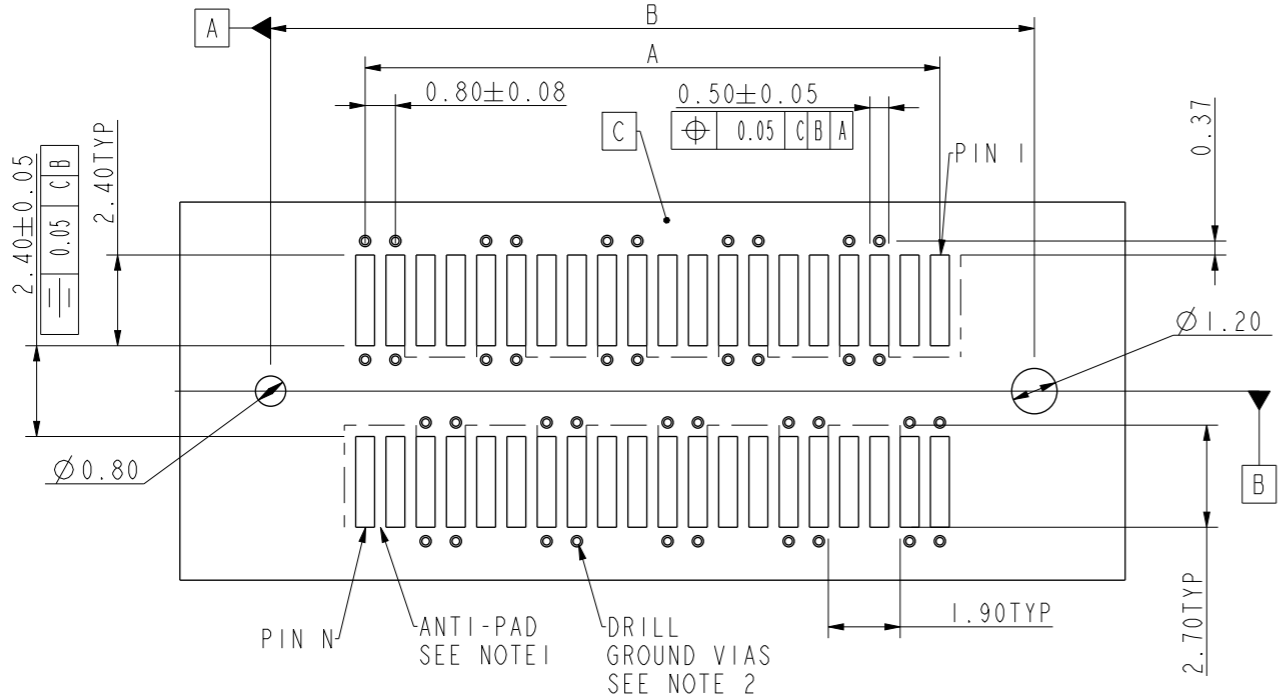
© 2016 AFCI



DOUBLE GROUND PATTERN
RECOMMENDED HS PCB LAYOUT



SIGLE GROUND PATTERN
RECOMMENDED HS PCB LAYOUT



DOUBLE GROUND PATTERN
RECOMMENDED STD PCB LAYOUT

PRODUCT NO.	NO. OF POSITION	DEMENSION	
		A	B
10147613-04**0**LF	2X20	15.20	20.20
10147613-06**0**LF	2X30	23.20	28.20
10147613-08**0**LF	2X40	31.20	36.20
10147613-10**0**LF	2X50	39.20	44.20
10147613-12**0**LF	2X60	47.20	52.20
10147613-14**0**LF	2X70	55.20	60.20

NOTE:

- FOR HS PCB, THE RECOMMENDED VOID SIZE IS 1.9MMx1.8MM;
FOR STD PCB, THE RECOMMENDED VOID SIZE IS 1.9MMx2.7MM;
- THE GROUND VIAS ARE REQUIRED TO ADD TO BOTH SIDES OF GROUND PAD, THE DISTANCE FROM VIA CENTER TO THE PAD EDGE IS RECOMMENDED TO BE 0.37MM.

spec ref	-	dr	Bob Gu	2019/12/31	projection	mm	size	A3	scale	5:1		
tolerance std	ISO 406 ISO 1101	eng	Bob Gu	2020/02/27			ecn no	-	rel level	Released		
TOLERANCES UNLESS OTHERWISE SPECIFIED		chr	-	-			product family					
surface	linear	appr	Tim Yao	2020/02/27	Amphenol FCI		RECEPTACLE ASSEMBLY		dwg no	10147613	rev	A
ISO 1302	angular			BERGSTAK HS 0.8MM		cat. no.		Product - Customer Drw		sheet 3 of 3		